

A woman with long, wavy brown hair is sitting on a white wicker chair outdoors. She is wearing a blue long-sleeved top with intricate white embroidery on the chest and a grey shawl with a subtle pattern draped over her shoulders. She is looking towards the camera with a slight smile. The background features a brick wall on the left and a stone structure with columns on the right, with green hills in the distance under a blue sky with light clouds.


HARIYAALI™
Fashion Starts Here

KAASHVI
with inner





REDEFINE NEW TREND

6008

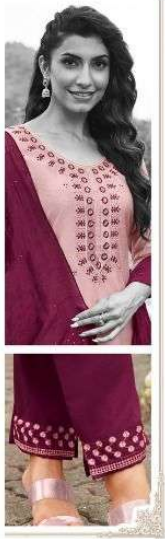




CREATE CHARISMATIC PERSONALITY

6004





NEW COLLECTION FOR EVERY OCCASION

6010





SUCH ELEGANT COLLECTION

6003





UNIQUE AND ORIGINAL



6006


HARIYAALI™
Fashion Starts Here

KAASHVI
with inner



6003

6004


HARIYAALITM
Fashion Starts Here



6005

6006



6009

6010



6007

6008

KAASHVI
with inner