



*Ransha*

#R-381-D



100% COTTON WITH HEAVY EMBROIDERY  
SILK LINER SARTORI  
SILK LINER SARTORI WITH HEAVY EMBROIDERY

DO NOT BLEACH OR STAIN REMOVING CHEMICAL.  
WASH IN WARM WATER TO MAINTAIN COLOR









*Kamsha*

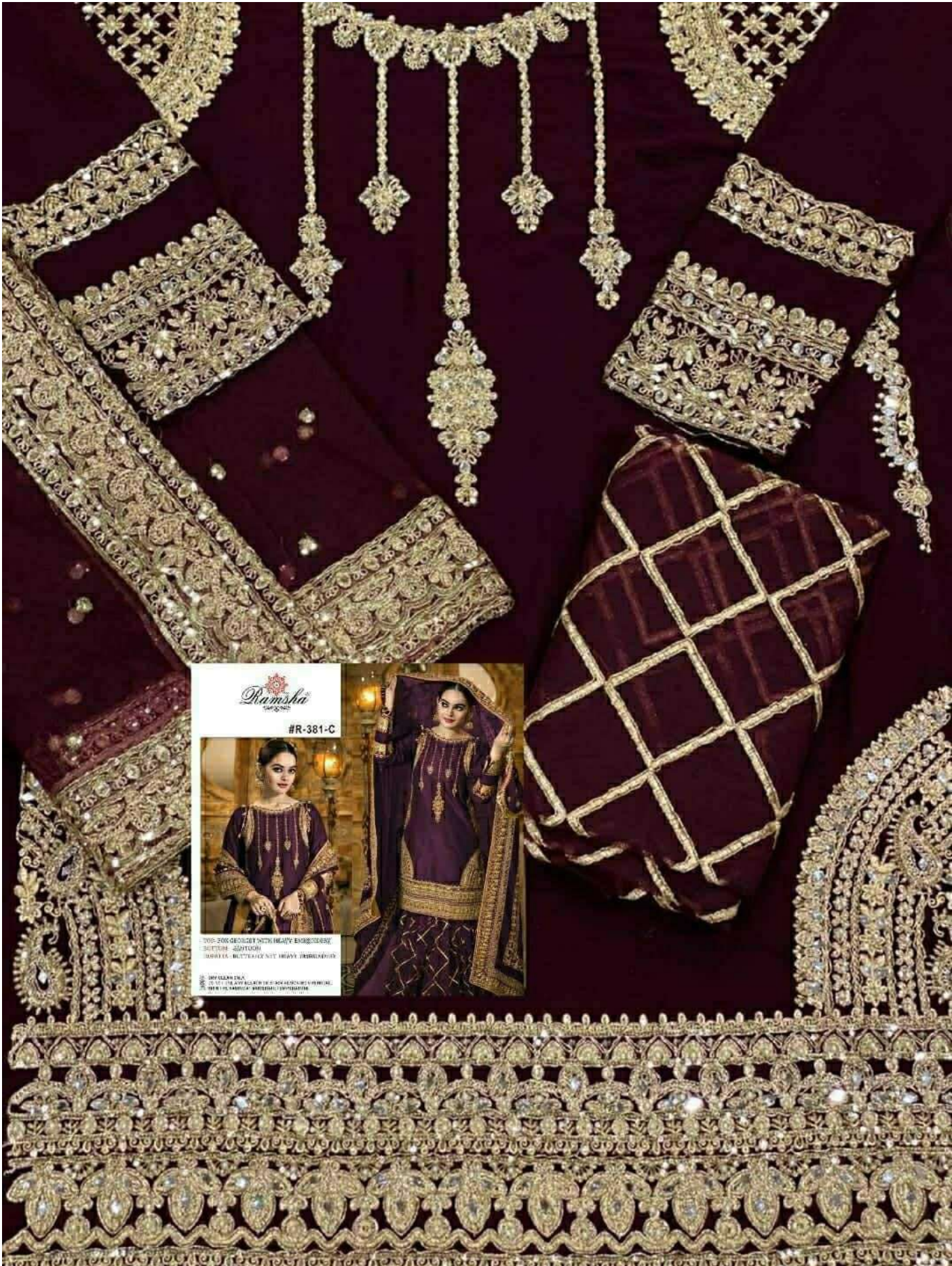
#R-381-D



100% COTTON WITH HEAVY EMBROIDERY  
SILK LINER SARTOON  
SHAWL WITH HEAVY EMBROIDERY

WASH IN COLD WATER WITH BLEACH OR STAIN REMOVING CHEMICAL.  
DO NOT WASH AT HIGH TEMPERATURE.





**Ramsha**  
Sarees

#R-381-C



205-206 GEORGETOWN HEAVY EMBROIDERY  
SAREE - 400 TGM  
SHARDA MULTIBRANDS HEAVY EMBROIDERY

DRY CLEAN ONLY  
DO NOT USE ANY BLEACHER OR SOAK ALCOHOLIC PERFORMANCE  
WASH IN COLD WATER SEPARATELY



Ramsha  
501-NX



#R-381-A



#R-381-B



#R-381-C



#R-381-D



#R-381-E



#R-381-F

Ramsha  
501-NX





Emb Sleeves

Emb Front

Emb Net Dupatta

Emb Net Bottom







**Ramsha**  
#R-381-F



100% POLYESTER WITH HEAVY EMBROIDERY  
SLEEVE: 3/4 SLEEVE  
DETAILS: DETachable BUST, EASY TO WASH DRY

DR. 084 4228 8557  
\* 20 METERS AND KLEANSHEETS IN WARDROBE  
\* 10% OFF ON PURCHASE OF 2 OR MORE







Zamsha  
#R-381-B  
100% PURE SILVER & GOLD  
KUNZITE - SAPHIRE  
DIAMOND - BUTTERFLY NET  
CRYSTAL  
DRY CLEAN ONLY  
DO NOT USE ANY BLEACHING