



Strawberry

Vol.02

Size : M-L-XL-XXL

Fab : Heavy Rayon Slub
Print with handwork





Strawberry

Vol.02
Size : M-L-XL-XXL
Fab : Heavy Rayon Slub
Print with handwork



A Products By NAMOH (India)
Exclusive Kurtis • Tops • Patiyalas





A - W - E - S - O - M - E



scintillating
plethora of timeless
masterpiece inspired
by beauty sensible
colors excellent
designs and
romantic mood give
perfect combination
of sense and
sensibility

enduring
essence



there's a new mood for women and it's full of sophistication
glamour and seductive womanly charm

Strawberry
Vol.02
205





Strawberry
Vol.02
204

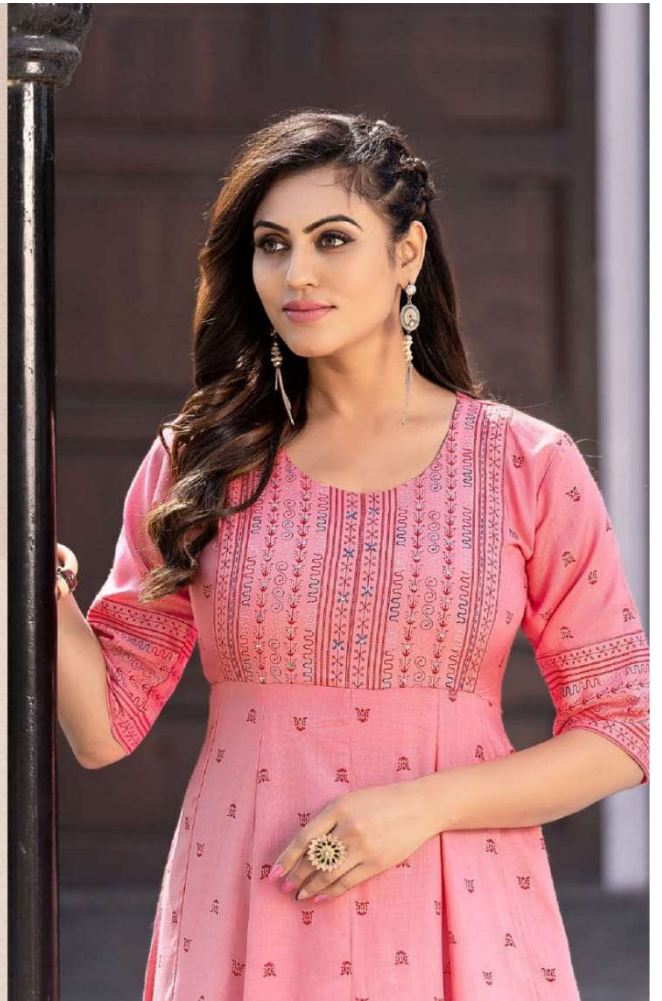


G — L — A — M — O — U — R

stand attention for styles latest construction, combination pattern with collection makes it reliable.



Strawberry
Vol. 02
203



T - A - K - I - N - G



the height of feminine fashion excellence elegant stylish & graceful and exceptionally classy an impressive beauty certainly stands as an inspiration for aspirants





A - W - E - S - O - M - E

NAMOH

Strawberry
Vol. 02
201

*there's a new mood for women
and it's full of sophistication
glamour and seductive womanly*

A full-body photograph of the woman in the same green kurta, standing in a dark wooden doorway. She is wearing green strappy sandals. The image is framed by a light-colored border. At the top of the border, the word "A - W - E - S - O - M - E" is written in a spaced-out font. In the top right corner of the frame, there is a logo for "NAMOH" featuring a stylized red and white emblem. In the bottom left corner, the text "Strawberry Vol. 02 201" is displayed. In the bottom right corner, there is a small inset image of the woman in the same outfit, and a line of italicized text: "there's a new mood for women and it's full of sophistication glamour and seductive womanly".



Strawberry

Vol.02

Size : M-L-XL-XXL

Fab : Heavy Rayon Slub
Print with handwork

