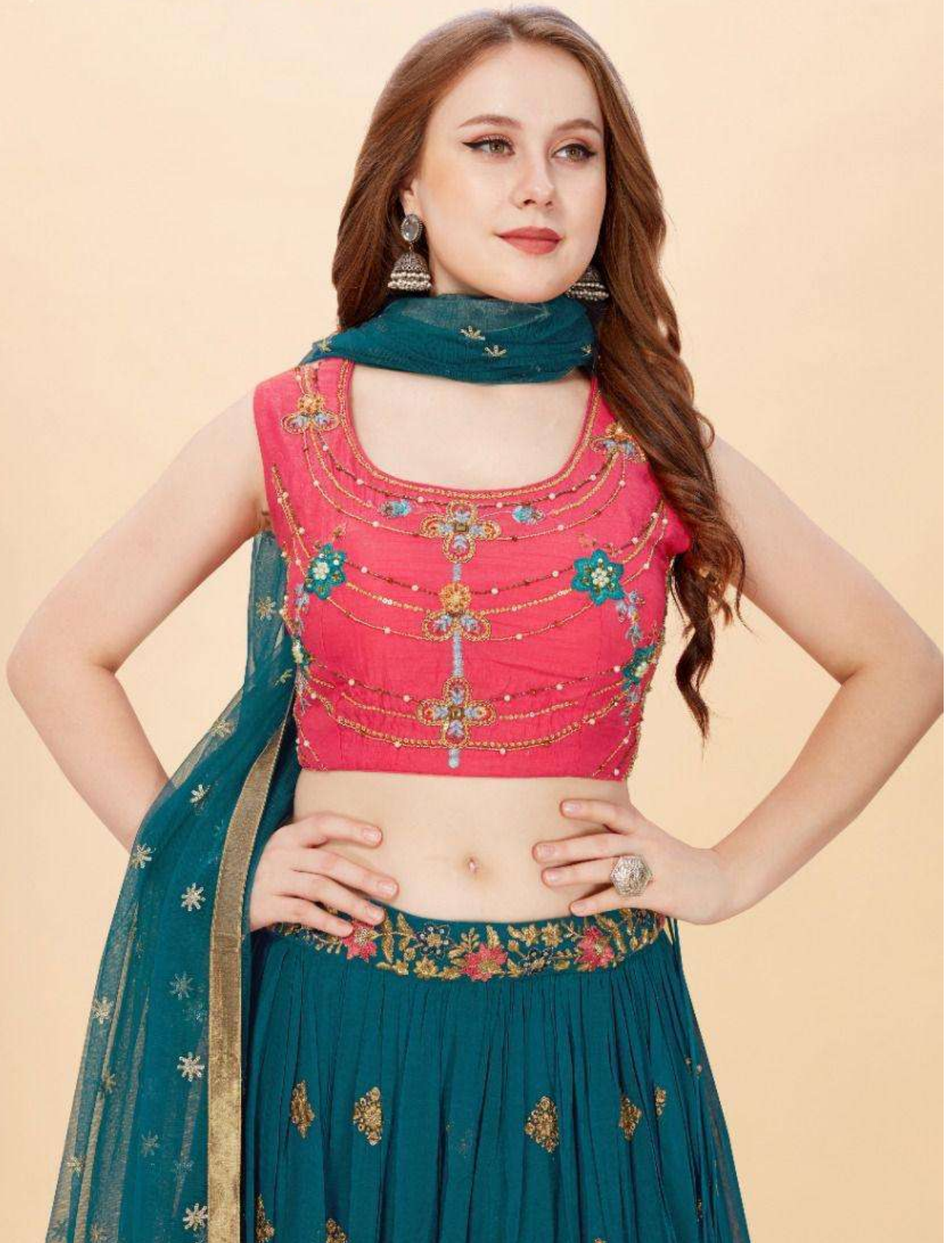


# APSARA

vol-3

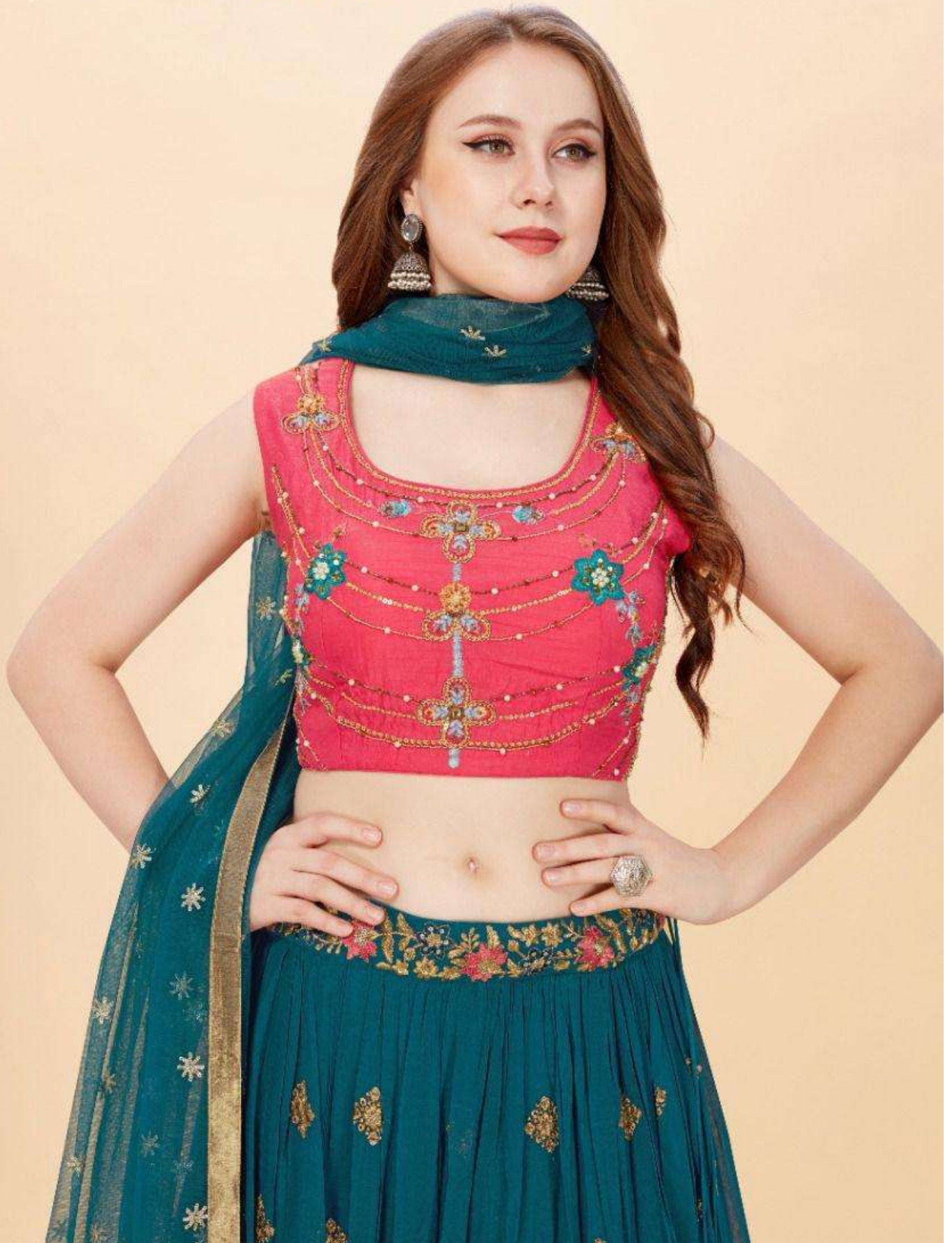
  
**MRUDANGI**®  
THE ART OF STYLISH CLOTHING



# APSARA

vol-3

  
**MRUDANGI**®  
THE ART OF STYLISH CLOTHING



1021

  
**MRUDANG**®  
THE ART OF STYLISH CLOTHING



1021

  
**MRUDANG**<sup>®</sup>  
THE ART OF STYLISH CLOTHING



1021



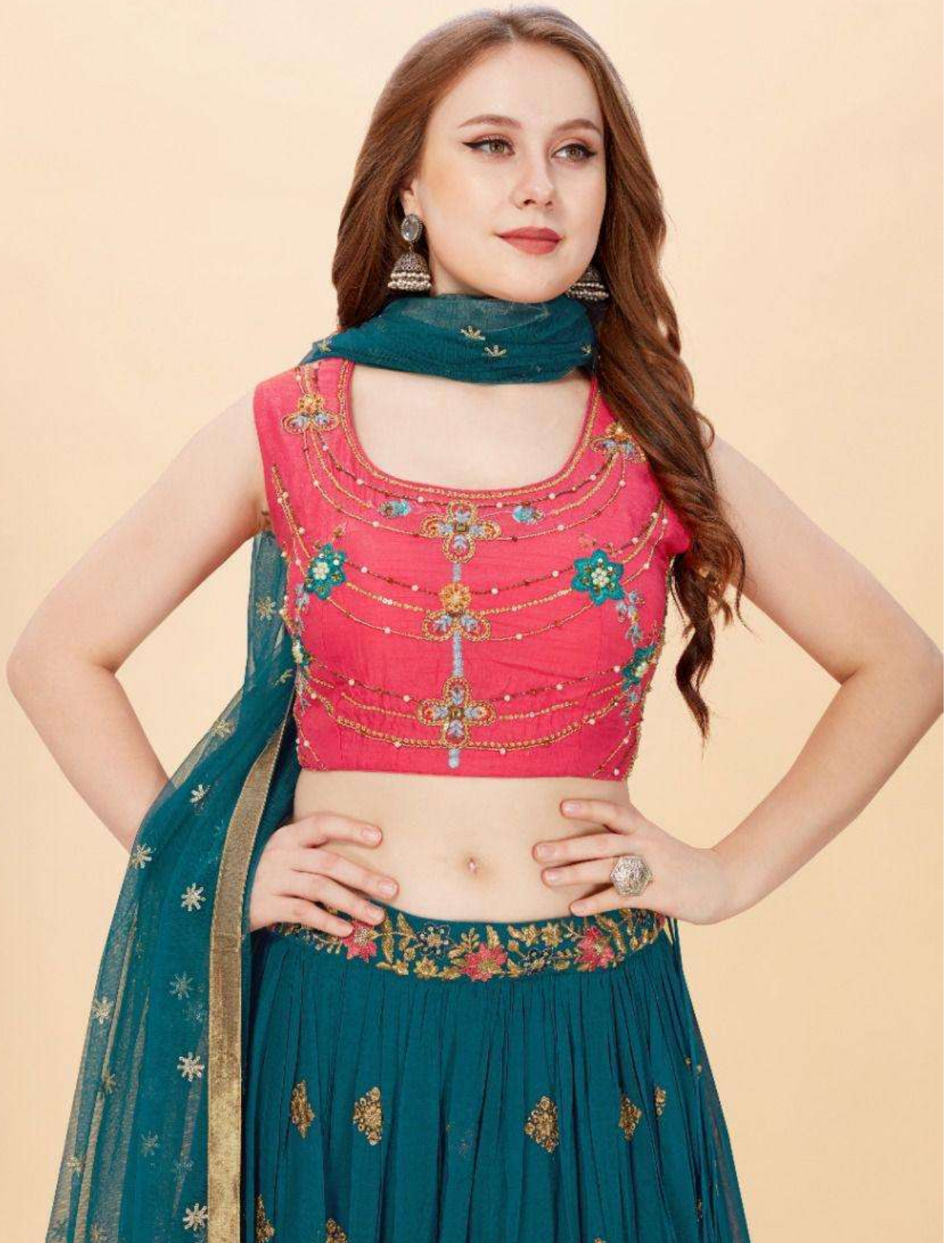
1021

  
**MRUDANGI**®  
THE ART OF STYLISH CLOTHING



1022

  
**MRUDANG**®  
THE ART OF STYLISH CLOTHING



1022

  
**MRUDANG**®  
THE ART OF STYLISH CLOTHING





1022

  
**MRUDANG**®  
THE ART OF STYLISH CLOTHING



1022

  
**MRUDANGI**<sup>®</sup>  
THE ART OF STYLISH CLOTHING

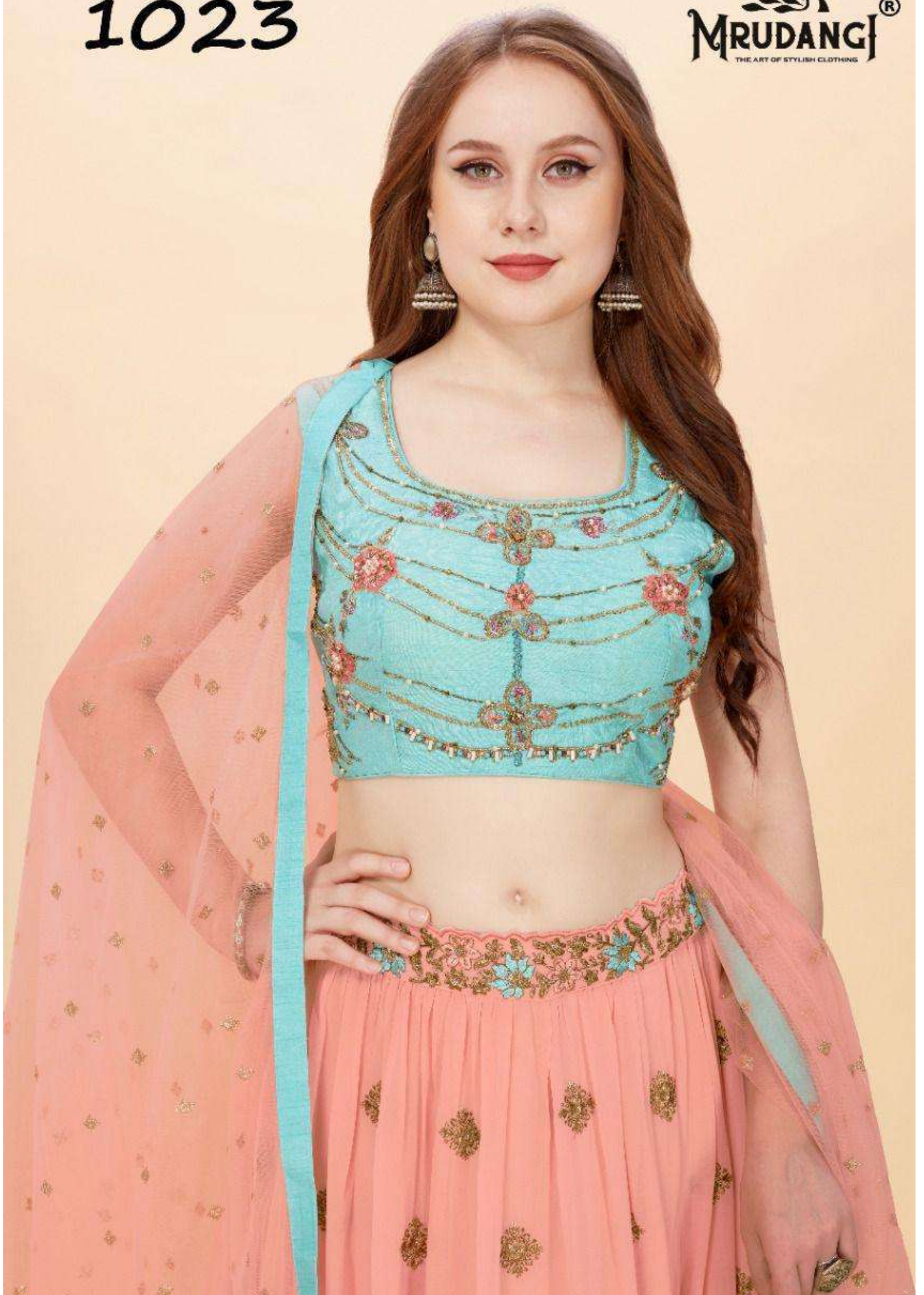


1023



1023

  
**MRUDANGI**®  
THE ART OF STYLISH CLOTHING



1023

  
**MRUDANG**®  
THE ART OF STYLISH CLOTHING



1023



1024

  
**MRUDANG**®  
THE ART OF STYLISH CLOTHING



1024

  
**MRUDANGI**®  
THE ART OF STYLISH CLOTHING





1024

  
**MRUDANGI**®  
THE ART OF STYLISH CLOTHING



1024

  
**MRUDANG**®  
THE ART OF STYLISH CLOTHING



# APSARA vol-3



## MRUDANGI 1021

**Blouse :** Banglari satin with handwork and embroidery work inner santoon with latkan

**LEHENGA :** Georgette with embroidery work with can can and latkan inner crepe

**DUPATTA :** Net with embroidery work and latkan

## MRUDANGI 1022

**Blouse :** Banglari satin with handwork and embroidery work inner santoon with latkan

**LEHENGA :** Georgette with embroidery work with can can and latkan inner crepe

**DUPATTA :** Net with embroidery work and latkan

## MRUDANGI 1023

**Blouse :** Banglari satin with handwork and embroidery work inner santoon with latkan

**LEHENGA :** Georgette with embroidery work with can can and latkan inner crepe

**DUPATTA :** Net with embroidery work and latkan

## MRUDANGI 1024

**Blouse :** Polyester chinon with handwork and embroidery work inner santoon

**LEHENGA :** Georgette with embroidery work with can can inner crepe

**DUPATTA :** Net with embroidery work