



|| Tattva ||

1808



|| Tattva ||



3607
① ② ③







|| Tattva ||

1808



|| Tattvaṣṭu ||



The synergy between the woman and the designer is an excellent example of how contemporary fashion and royalty make a great combination.



|| Tattva ||



This beautiful collection
integrates both contemporary
and ethnicity with
an amazing palette
of colours and designs.

4103





4102

This beautiful collection merges both contemporary and ethnicity with an amazing galaxy of colours and designs.



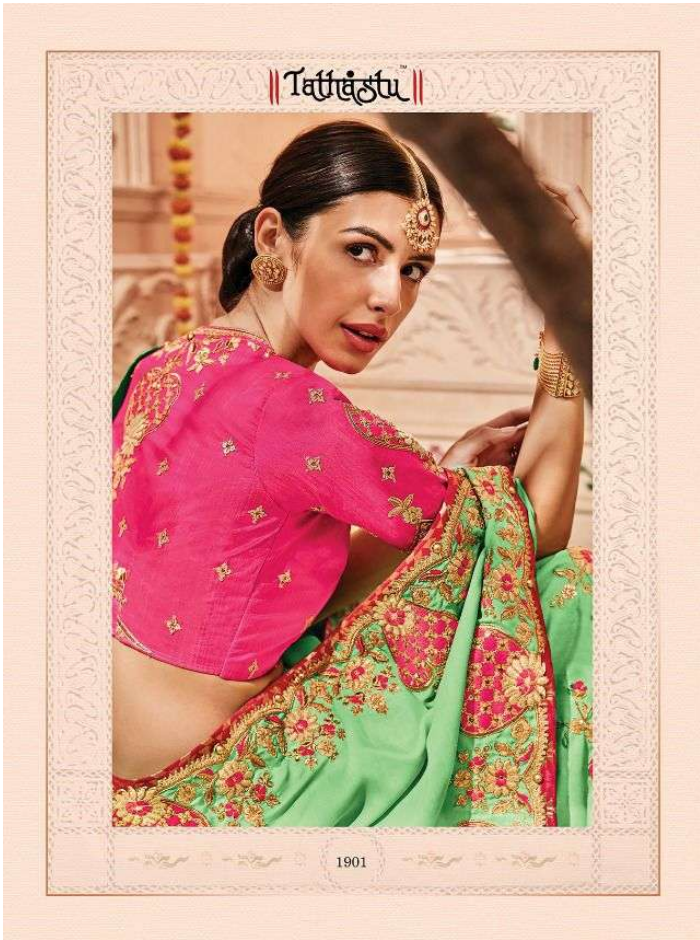
4107



|| Tattva ||

The beautiful collection
includes contemporary
and ethnicity with
intriguing saree
designs and patterns.





|| Tattva ||



PALLU DESIGN AS SHOWN IN BELOW.





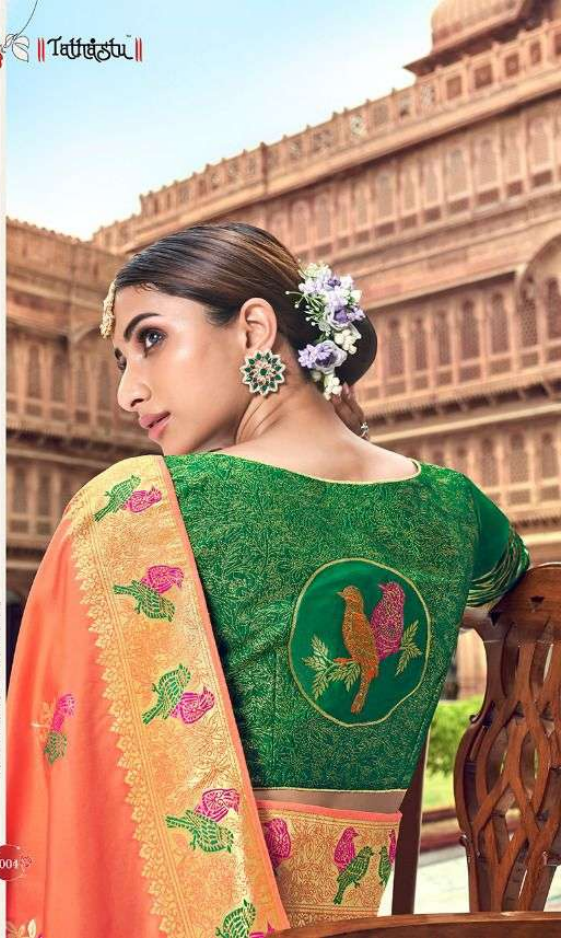
|| Tattva ||



3306



Tattva



3004

Tattva



D.NO.3404





॥ Tattva ॥

3311

॥ Tattvāstu ॥

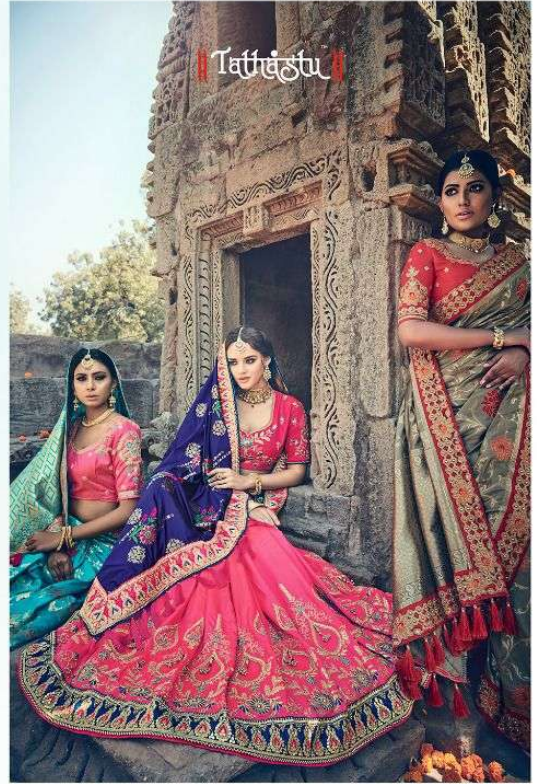




॥ Tattv ॥

BEAUTY *Arose*

The essence of beauty is not in the face, but in the soul.



1603

Sanjana Designer

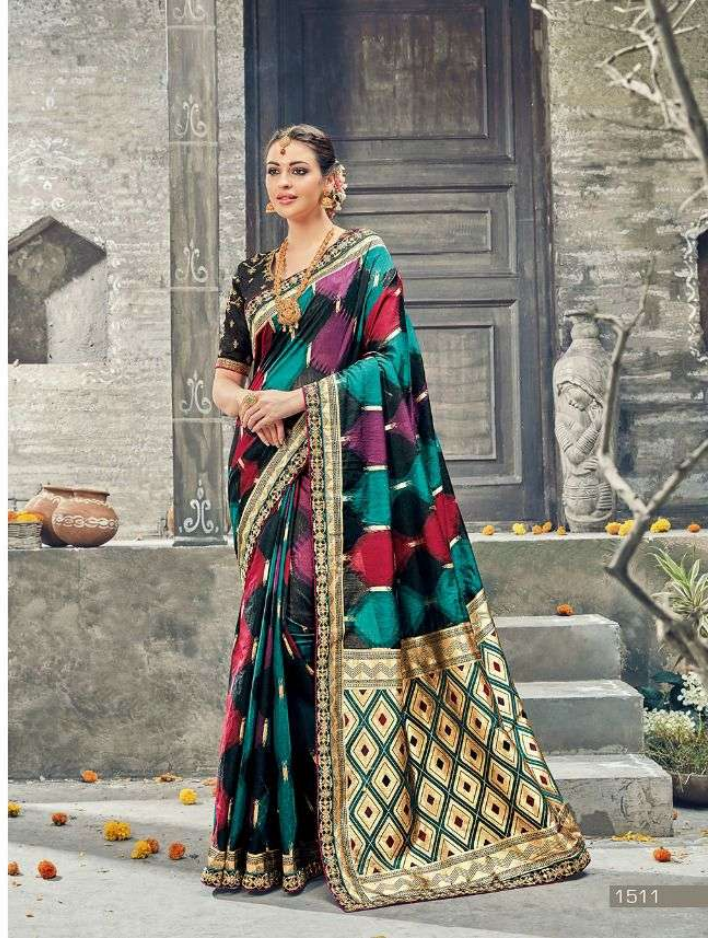


D.NO. 1010

|| Tattvamsa ||



With robe beautifying and fabric fascinating



|| Tattvāstu ||



1212

Sanjana Designer

D.NO. 1008







Sanjana Designer



D.NO. 1009

|| Tattvāṣṭu ||



4114

