



Creating a Story
enter stage

traditional Indian culture is defined by a relatively strict social hierarchy and the culture of modern India is a complex blend of its historical and social traditions.





R-357



R-357 A



R-357 B



R-358 B



R-358 C



R-359



R-357 C



R-358



R-358 A



R-359 A



R-359 B



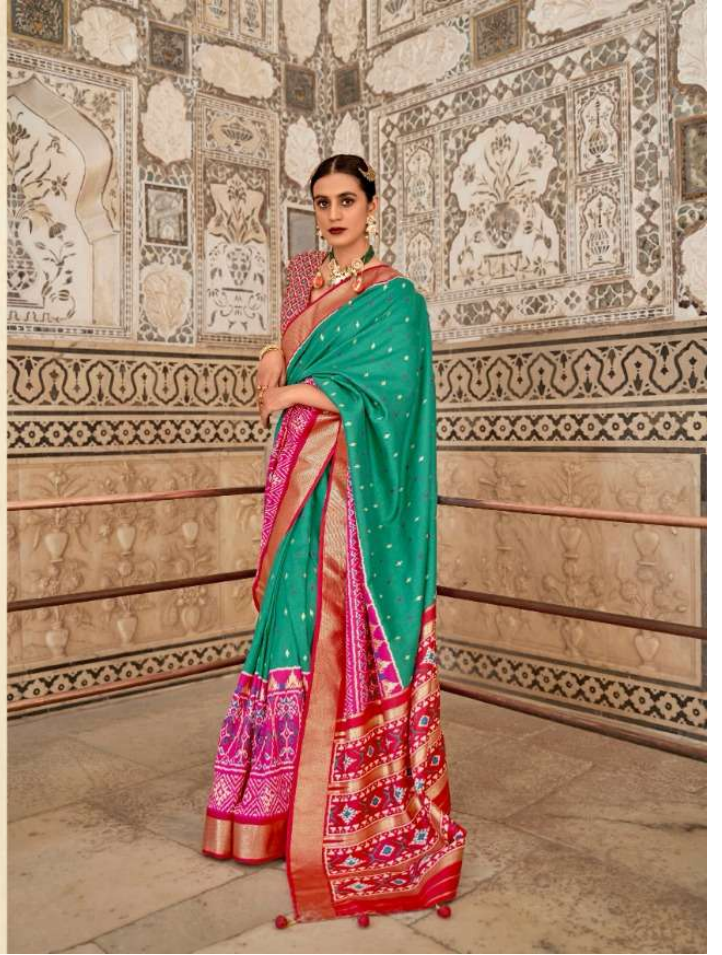
R-359 C



PATRANI

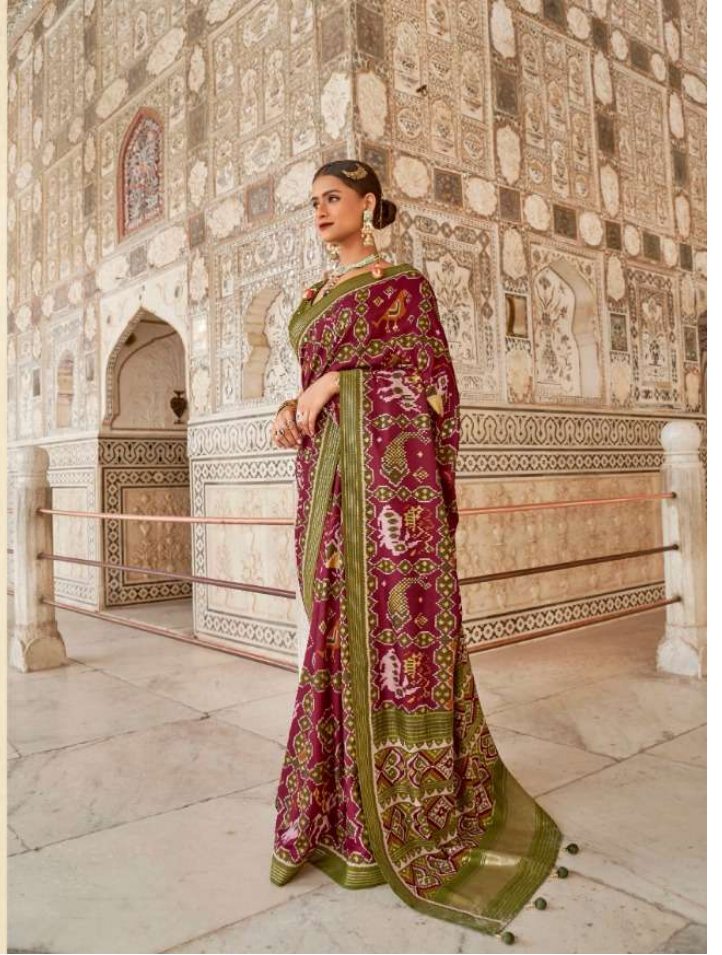


REWAA
R-357 C





REWAA
R-358 A






REWAA
Creating Classics
R-359 B





REWAA
R-357







Creating a Story
enter stage

traditional indian culture is defined by a relatively strict social hierarchy and the culture of modern india is a complex blend of its historical and social traditions.



R-358 B



REWAA
Creating Classics
R-357 A





REVA
R-358 C





REWAA
R-358





Creating a Story

Indian and Indian culture is digital first, it's not just a social
technology and the culture of India is a complex blend
of its historical and social traditions.

REWAA
Creating a Story



Creating a Story
enter stage

traditional Indian culture is defined by a relatively strict social hierarchy and the culture of modern India is a complex blend of its historical and social traditions.

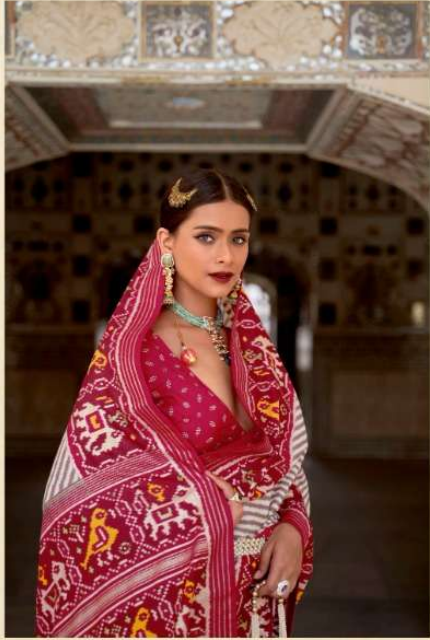




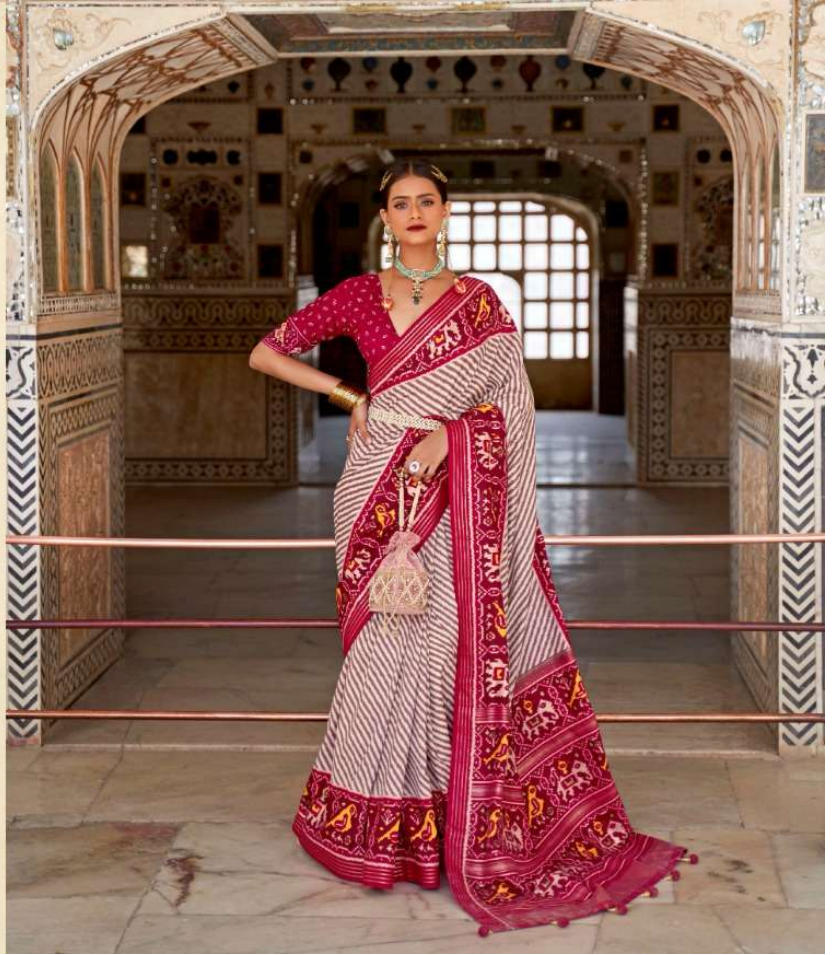


REWAA
R-357 B





REVA
R-359 C





a Story by

REWAA

