



#R-460-C



TOP- FOX GEORGET WITH EMBROIDERY  
BOTTOM- DULL SANTOON  
DUPATTA - NAZMEEN WITH EMBROIDERY

- Ⓟ DRY CLEAN ONLY.
- ✘ DO NOT USE ANY BLEACH OR STAIN REMOVING CHEMICAL.
- ☎ IRON THE FABRIC AT MODERATE TEMPERATURE.



#R-460-C



TOP- FOX GEORGET WITH EMBROIDERY  
BOTTOM- DULL SANTOON  
DUPATTA - NAZMEEN WITH EMBROIDERY

- Ⓟ DRY CLEAN ONLY.
- ✘ DO NOT USE ANY BLEACH OR STAIN REMOVING CHEMICAL.
- ☎ IRON THE FABRIC AT MODERATE TEMPERATURE.

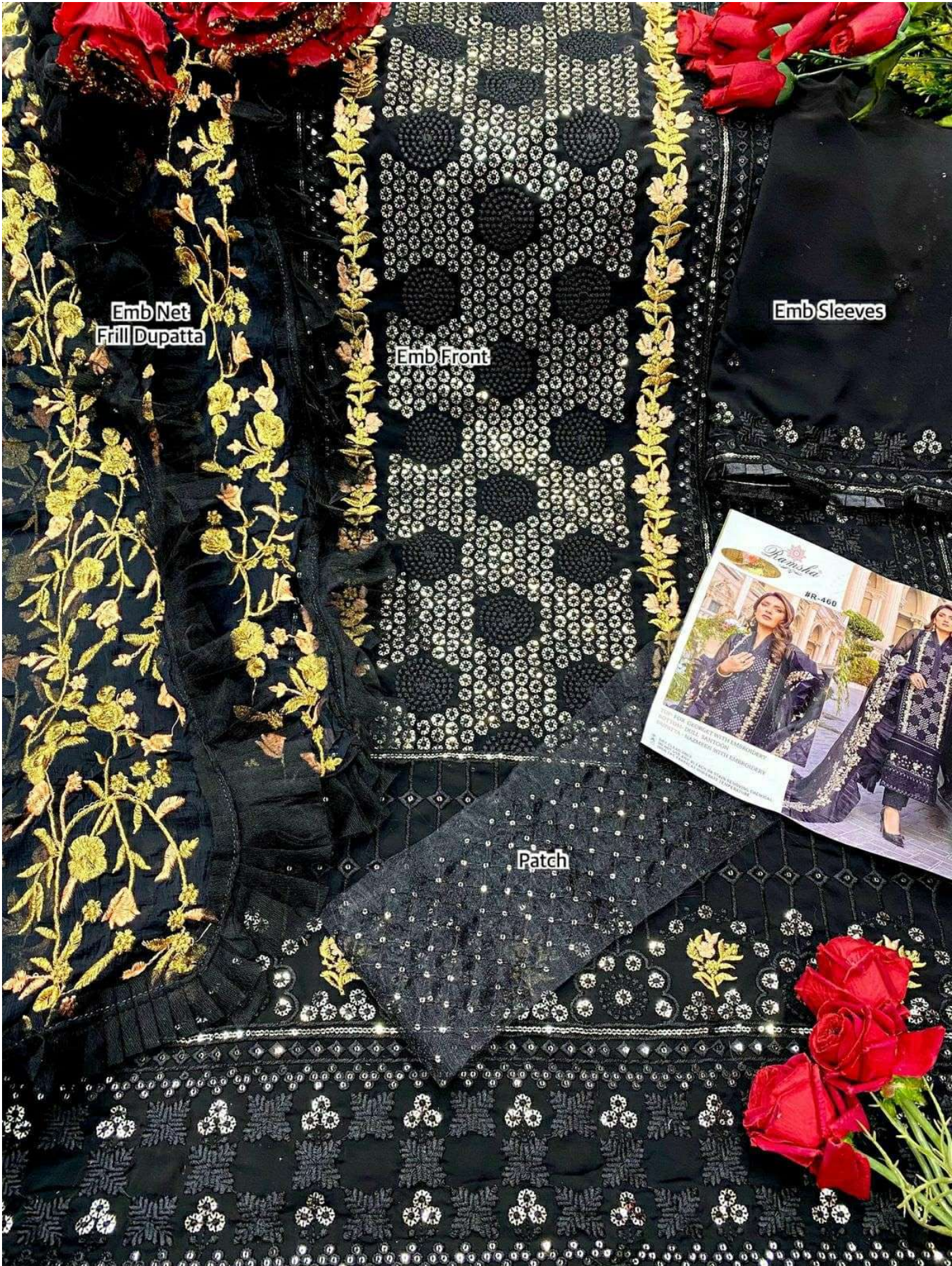


#R-460-D



TOP- FOX GEORGET WITH EMBROIDERY  
BOTTOM- DULL SANTOON  
DUPATTA - NAZMEEN WITH EMBROIDERY

- Ⓟ DRY CLEAN ONLY.
- ✘ DO NOT USE ANY BLEACH OR STAIN REMOVING CHEMICAL.
- ☎ IRON THE FABRIC AT MODERATE TEMPERATURE.



Emb Net  
Frill Dupatta

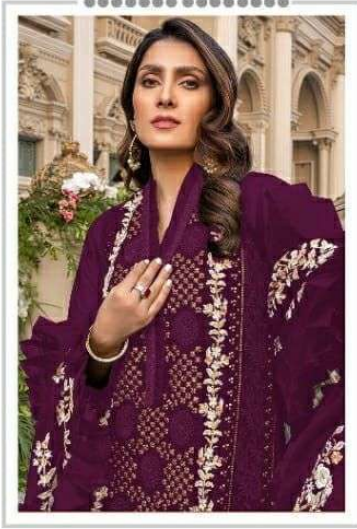
Emb Front

Emb Sleeves

Patch



Ramsha®  
460-DARK-NX



#R-460-A



#R-460-B

Ramsha®  
460-DARK-NX



#R-460-C



#R-460-D



#R-460



**TOP-** FOX GEORGET WITH EMBROIDERY  
**BOTTOM-** DULL SANTOON  
**DUPATTA -** NAZMEEN WITH EMBROIDERY

- Ⓟ DRY CLEAN ONLY.
- ✘ DO NOT USE ANY BLEACH OR STAIN REMOVING CHEMICAL.
- ☎ IRON THE FABRIC AT MODERATE TEMPERATURE.



#R-460-B



**TOP-** FOX GEORGET WITH EMBROIDERY  
**BOTTOM-** DULL SANTOON  
**DUPATTA -** NAZMEEN WITH EMBROIDERY

Ⓟ DRY CLEAN ONLY.  
⊗ DO NOT USE ANY BLEACH OR STAIN REMOVING CHEMICAL.  
☎ IRON THE FABRIC AT MODERATE TEMPERATURE.