



DS-101-A



Neck Patch

Emb Sleeves

Emb Net Dupatta

Emb Front



Bottom Patch



Neck Patch

Emb Sleeves

Emb Net Dupatta

Emb Front



Bottom Patch



**Emb Net
Dupatta**

**Neck
Patch**

Emb Sleeves

Emb Front

**Bottom
Patch**





DS-101-C

**TOP - FOX GEORGETTE
WITH EMBROIDERY
DUPATTA - NET BUTTERFLY
BOTTOM/INER - SANTOON**



WASHING INSTRUCTIONS
DO NOT USE HOT TIPS OF IRON OR STARCH ON FABRIC
NEVER CUTTING AND POLISHING SHOULD BE DONE IN COLD WATER
DO NOT USE DRY CLEANING FOR FABRICS
DO NOT KEEP ARTICLES IN CONTACT WITH DIRECT RAYS OF SUN
DO NOT USE BLEACHING AND DYEING AGENTS
REMOVING STAIN FROM FABRIC SHOULD BE DONE IN COLD WATER
OTHER CARE INSTRUCTIONS AND ACCESSORIES ARE NOT INCLUDED



DS-101-A



DS-102-B

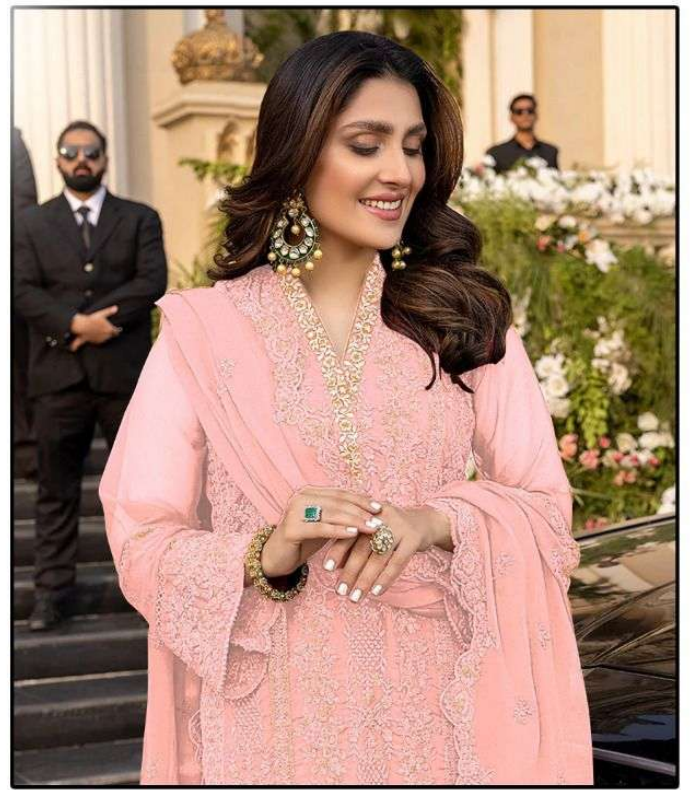


DS-103-C





DS-101-A



DS-101-A

**TOP - FOX GEORGETTE
WITH EMBROIDERY
DUPATTA - NET BUTTERFLY
BOTTOM/INER - SANTOON**



WASHING INSTRUCTIONS
DO NOT USE HOT TIPS OF IRON OR STEAM IRONING ON FABRICS
NEVER CUTTING AND POLISHING SHOULD BE DONE IN COLD WATER
DULL COMPONENTS SHOULD BE POLISHED
DO NOT KEEP ARTICLES IN CONTACT WITH DIRECT RAYS OF SUNLIGHT
DO NOT CLEAN WITH HARSH DETERGENTS
REMOVING STAIN FROM FABRIC SHOULD BE DONE BY SPECIALIST
OTHER CARE INSTRUCTIONS AND ACCESSORIES ARE NOT INCLUDED



DS-101-B

**TOP - FOX GEORGETTE
WITH EMBROIDERY
DUPATTA - NET BUTTERFLY
BOTTOM/INER - SANTOON**



WASHING INSTRUCTIONS
 DO NOT USE HOT TIPS OF IRON OR DRY CLEANING CHEMICALS
 BEFORE DRYING FROM INSIDE, SHOULD BE WASHED IN WATER
 ALL COMPONENTS SHOULD BE WASHED
 DO NOT KEEP ARTICLES IN CONTACT WITH DIRECT SUNLIGHT
 WASHING INSTRUCTIONS SHOULD BE FOLLOWED
 BEYOND THE WASHING INSTRUCTIONS OF THE PRODUCT LABEL
 (EXTRA CARE WASHING INSTRUCTIONS MAY BE REQUIRED)