

**Epic**<sup>®</sup>

**Rosemeen**<sup>®</sup>  
MEHRUMAH





D.NO.90033

D.NO.90034

D.NO.90035

D.NO.90036

D.NO.90037

D.NO.90038

**Fepic**® **Rosemeen**®  
MEHRUMAH

Instagram: [@\\_Fepic](#)  
Facebook: [Fb.com/Fepic11](#)

D.NO	TOP	INNER	BOTTOM	DUPATTA	PRICE
90033	GEORGETTE EMBROIDERED	SANTOON	SANTOON WITH EMB PAYAL PATCH	NAZMEEN EMBROIDERED	1289
90034	GEORGETTE EMBROIDERED	SANTOON	SANTOON WITH EMB PAYAL PATCH	NAZMEEN EMBROIDERED	1349
90035	GEORGETTE EMBROIDERED	SANTOON	SANTOON WITH EMB PAYAL PATCH	NAZMEEN EMBROIDERED	1325
90036	GEORGETTE EMBROIDERED	SANTOON	SANTOON WITH EMB PAYAL PATCH	NAZMEEN EMBROIDERED	1321
90037	GEORGETTE EMBROIDERED	SANTOON	SANTOON WITH EMB PAYAL PATCH	NET EMBROIDERED	1451
90038	GEORGETTE EMBROIDERED	SANTOON	SANTOON WITH EMB PAYAL PATCH	NET EMBROIDERED FRILL DUPATTA	1359
					AVG PRICE 1349


 \_Fepic  
 :fb.com/Fepic11  
 MEHRUMAH





Fepic®

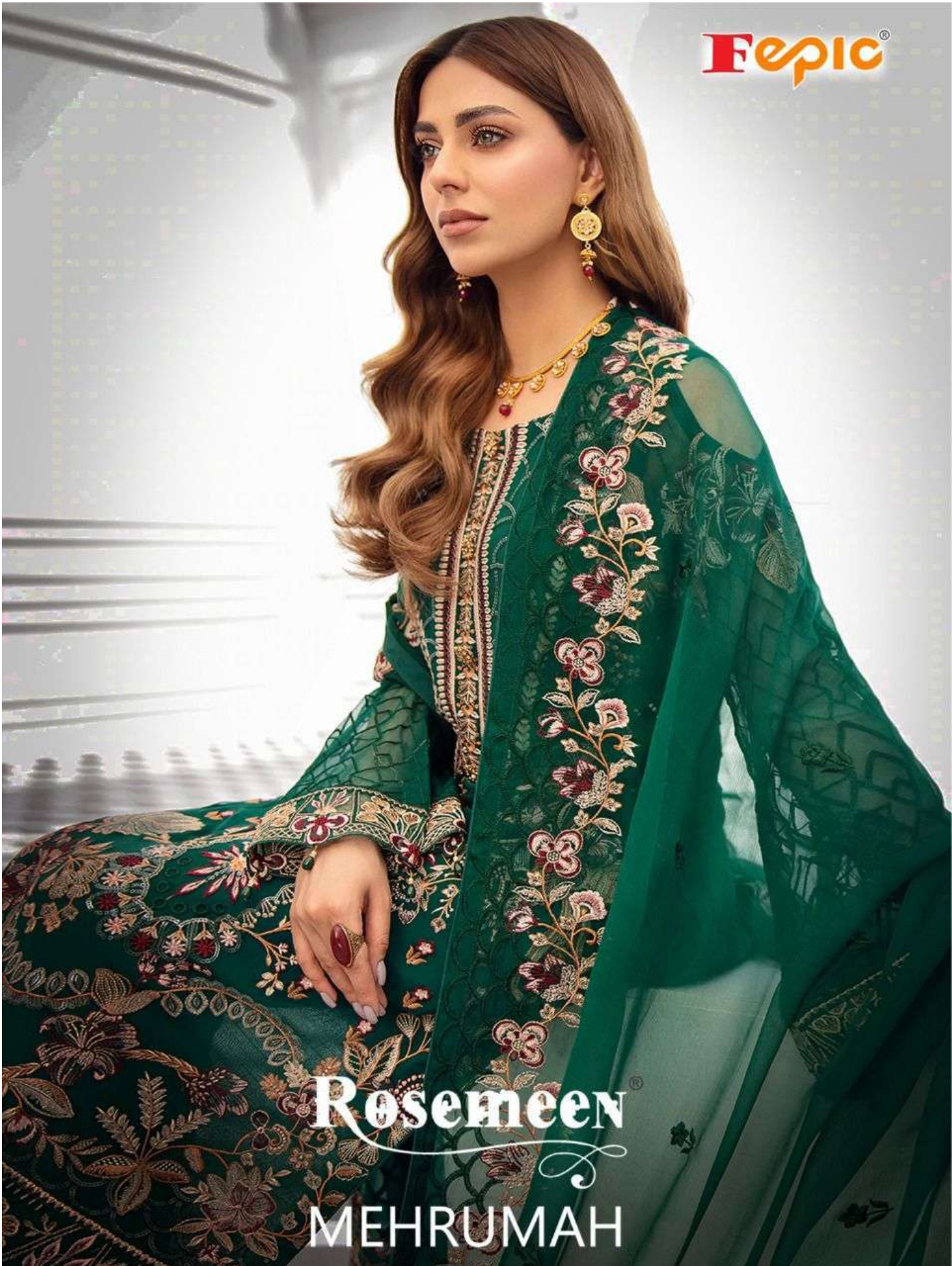
Rosemeen®

MEHRUMAH

D.NO.90038



**Epic**<sup>®</sup>



**Rosemeen**<sup>®</sup>  
MEHRUMAH





**Epic**<sup>®</sup>  
**Rosemeen**<sup>®</sup>  
MEHRUMAH  
D.NO.90035



**Epic**  
**Rosemeen**  
MEHRUMAH  
D.NO.90036





**Fepic®**



**WASHING INSTRUCTIONS**

DO NOT USE ANY TYPE OF BLEACH OR STAIN REMOVING CHEMICALS  
BEFORE CUTTING / STITCHING, FABRIC SHOULD BE SOAKED IN WATER  
( ALL COMPONENTS SEPARATELY ) FOR 15 MINUTES  
DO NOT KEEP WET FABRIC IN TWISTED FORM IN ORDER TO AVOID COPY MARKS |  
WASH COLOURED AND WHITE FABRICS SEPARATELY  
IRON CLOTHES AT MODERATE TEMPERATURE | DO NOT DRY FABRIC IN DIRECT SUNLIGHT  
( EXTRA LACES, HANGINGS AND ACCESSORIES ARE NOT INCLUDED )

**Rosemeen®**

**MEHRUMAH**

**D.NO.90037**





**Fepic®**



**WASHING INSTRUCTIONS**

DO NOT USE ANY TYPE OF BLEACH OR STAIN REMOVING CHEMICALS  
BEFORE CUTTING / STITCHING, FABRIC SHOULD BE SOAKED IN WATER  
( ALL COMPONENTS SEPARATELY ) FOR 15 MINUTES  
DO NOT KEEP WET FABRIC IN TWISTED FORM IN ORDER TO AVOID COPY MARKS |  
WASH COLOURED AND WHITE FABRICS SEPARATELY  
IRON CLOTHES AT MODERATE TEMPERATURE | DO NOT DRY FABRIC IN DIRECT SUNLIGHT  
( EXTRA LACES, HANGINGS AND ACCESSORIES ARE NOT INLUDED )

**Rosemeen®**

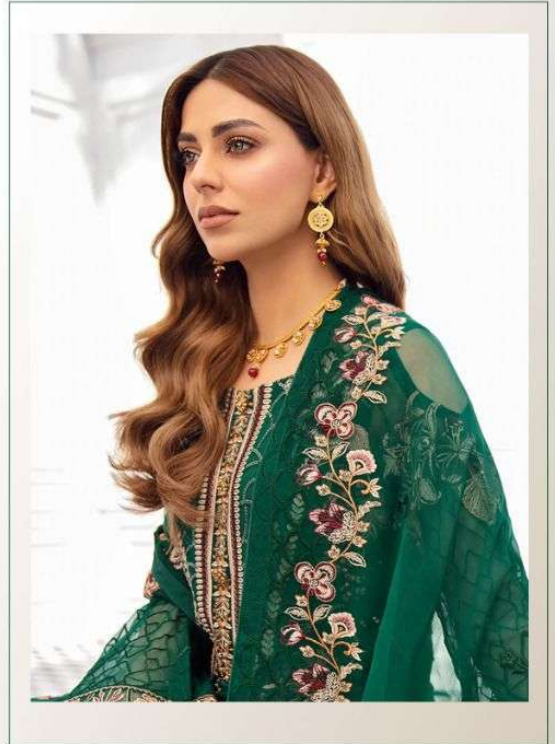
**MEHRUMAH**

**D.NO.90034**





**Fepic**<sup>®</sup>



**Rosemeen**<sup>®</sup>

MEHRUMAH

D.NO.90033



**Epic®**



**WASHING INTRUCTIONS**

DO NOT USE ANY TYPE OF BLEACH OR STAIN REMOVING CHEMICALS  
BEFORE CUTTING / STITCHING. FABRIC SHOULD BE SOAKED BE SOAKED IN WATER  
( ALL COMPONENTS SEPARATELY ) FOR 15 MINUTES  
DO NOT KEEP WET FABRIC IN TWISTED FROM IN ORDER TO AVOID COPY MARKS |  
WASH COLOURED AND WHITE FABRICS SEPARATELY  
IRON CLOTHES AT MODERATE TEMPERATURE | DO NOT DRY FABRIC IN DIRECT SUNLIGHT  
( EXTRA LACES, HANGINGS AND ACCESSORIES ARE NOT INLUDED )

**Rosemeen®**

**MEHRUMAH**

**D.NO.90038**



**Fepic®**



**WASHING INTRUCTIONS**

DO NOT USE ANY TYPE OF BLEACH OR STAIN REMOVING CHEMICALS  
BEFORE CUTTING / STITCHING, FABRIC SHOULD BE SOAKED IN WATER  
( ALL COMPONENTS SEPARATELY ) FOR 15 MINUTES  
DO NOT KEEP WET FABRIC IN TWISTED FROM IN ORDER TO AVOID COPY MARKS |  
WASH COLOURED AND WHITE FABRICS SEPARATELY  
IRON CLOTHES AT MODERATE TEMPERATURE | DO NOT DRY FABRIC IN DIRECT SUNLIGHT  
( EXTRA LACES, HANGINGS AND ACCESSORIES ARE NOT INDUDED )

**Rosemeen®**

**MEHRUMAH**

**D.NO.90036**





**Fepic®**



**WASHING INSTRUCTIONS**

DO NOT USE ANY TYPE OF BLEACH OR STAIN REMOVING CHEMICALS  
BEFORE CUTTING / STITCHING, FABRIC SHOULD BE SOAKED IN WATER  
( ALL COMPONENTS SEPARATELY ) FOR 15 MINUTES  
DO NOT KEEP WET FABRIC IN TWISTED FORM IN ORDER TO AVOID COPY MARKS |  
WASH COLOURED AND WHITE FABRICS SEPARATELY  
IRON CLOTHES AT MODERATE TEMPERATURE | DO NOT DRY FABRIC IN DIRECT SUNLIGHT  
( EXTRA LACES, HANGINGS AND ACCESSORIES ARE NOT INCLUDED )

**Rosemeen®**

**MEHRUMAH**

**D.NO.90035**





Fepic®



WASHING INTRUCTIONS

DO NOT USE ANY TYPE OF BLEACH OR STAIN REMOVING CHEMICALS  
BEFORE CUTTING / STITCHING, FABRIC SHOULD BE SOAKED IN WATER  
( ALL COMPONENTS SEPARATELY ) FOR 15 MINUTES  
DO NOT KEEP WET FABRIC IN TWISTED FROM IN ORDER TO AVOID COPY MARKS |  
WASH COLOURED AND WHITE FABRICS SEPARATELY  
IRON CLOTHES AT MODERATE TEMPERATURE | DO NOT DRY FABRIC IN DIRECT SUNLIGHT  
( EXTRA LACES, HANGINGS AND ACCESSORIES ARE NOT INLUDED )

Rosemeen®

MEHRUMAH

D.NO.90033

