

**Epic**®



**Rosemeen**®

IMAGE CHIKANKARI  
COLLECTION







**D NO  
46025**

ROSEMEEN  
**Fepic**

**Fepic**



**D No  
46022**



**Eepic**

**ROSEMEEN**  
**Eepic**

**D No  
46024**



ROSTMIN  
Fepio  
Lace

Fepio

D No  
46023



D No  
46021

Fepic

ROSEMEEN  
Fepic

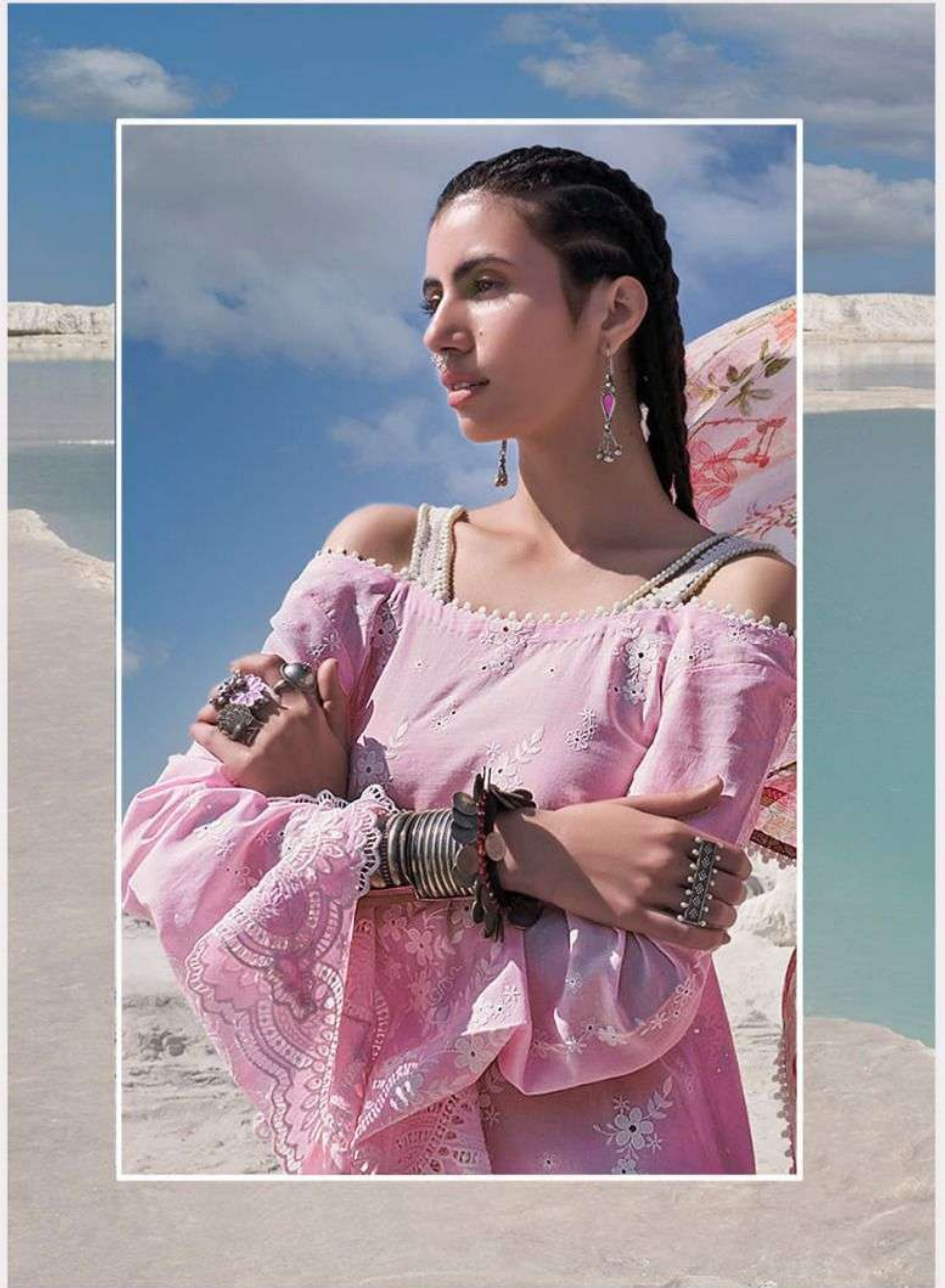


**Fepic**<sup>®</sup>

**Rosemeen**<sup>®</sup>

IMAGE CHIKANKARI  
COLLECTION

D.NO.46025



**Epic**®



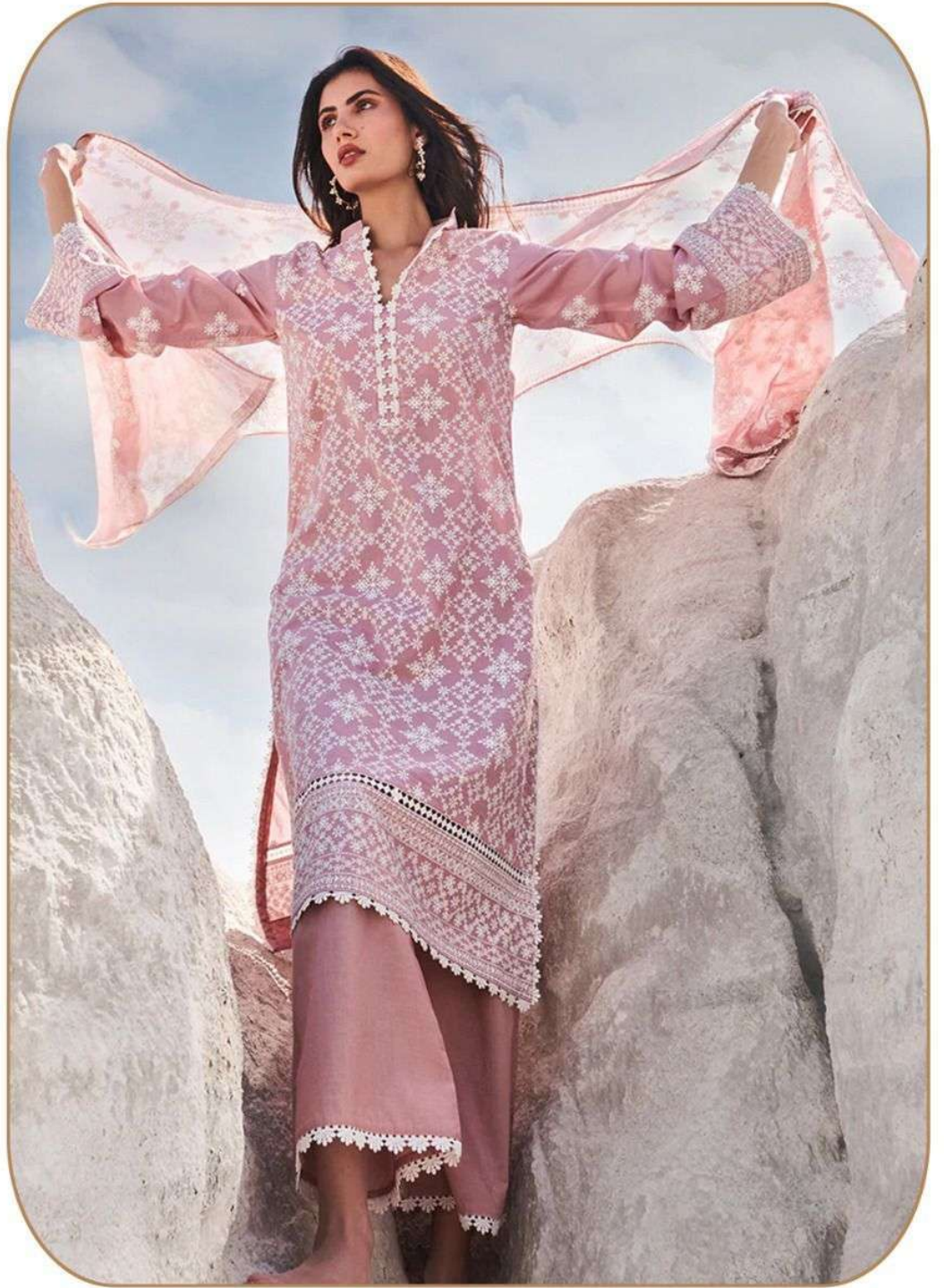
**Rosemeen**®

IMAGE CHIKANKARI  
COLLECTION

**Fepic**<sup>®</sup>



D.NO.46024



**Fepic**<sup>®</sup>

**Rosemeen**<sup>®</sup>

IMAGE CHIKANKARI  
COLLECTION

D.NO.46027

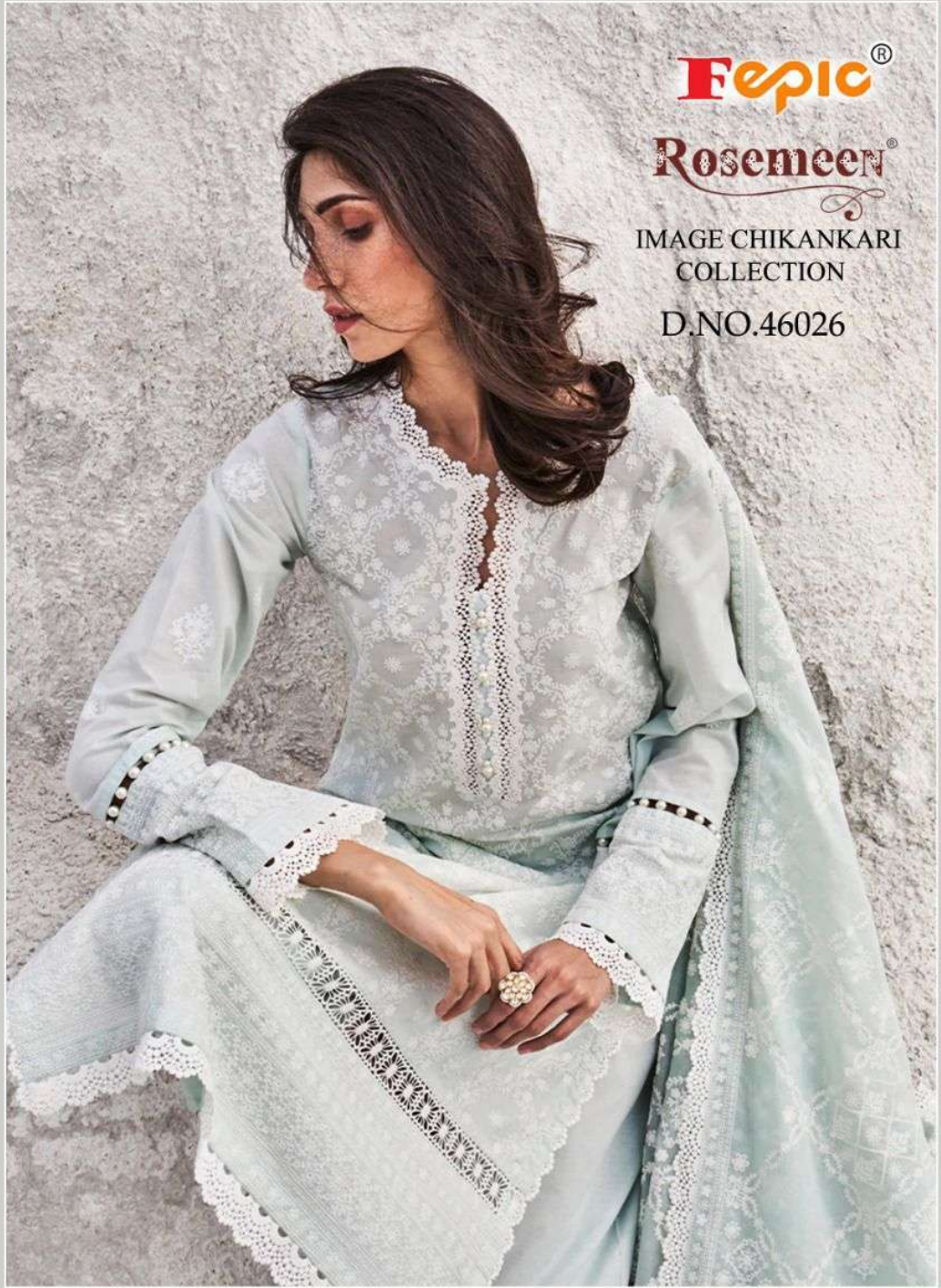


**Epic**<sup>®</sup>

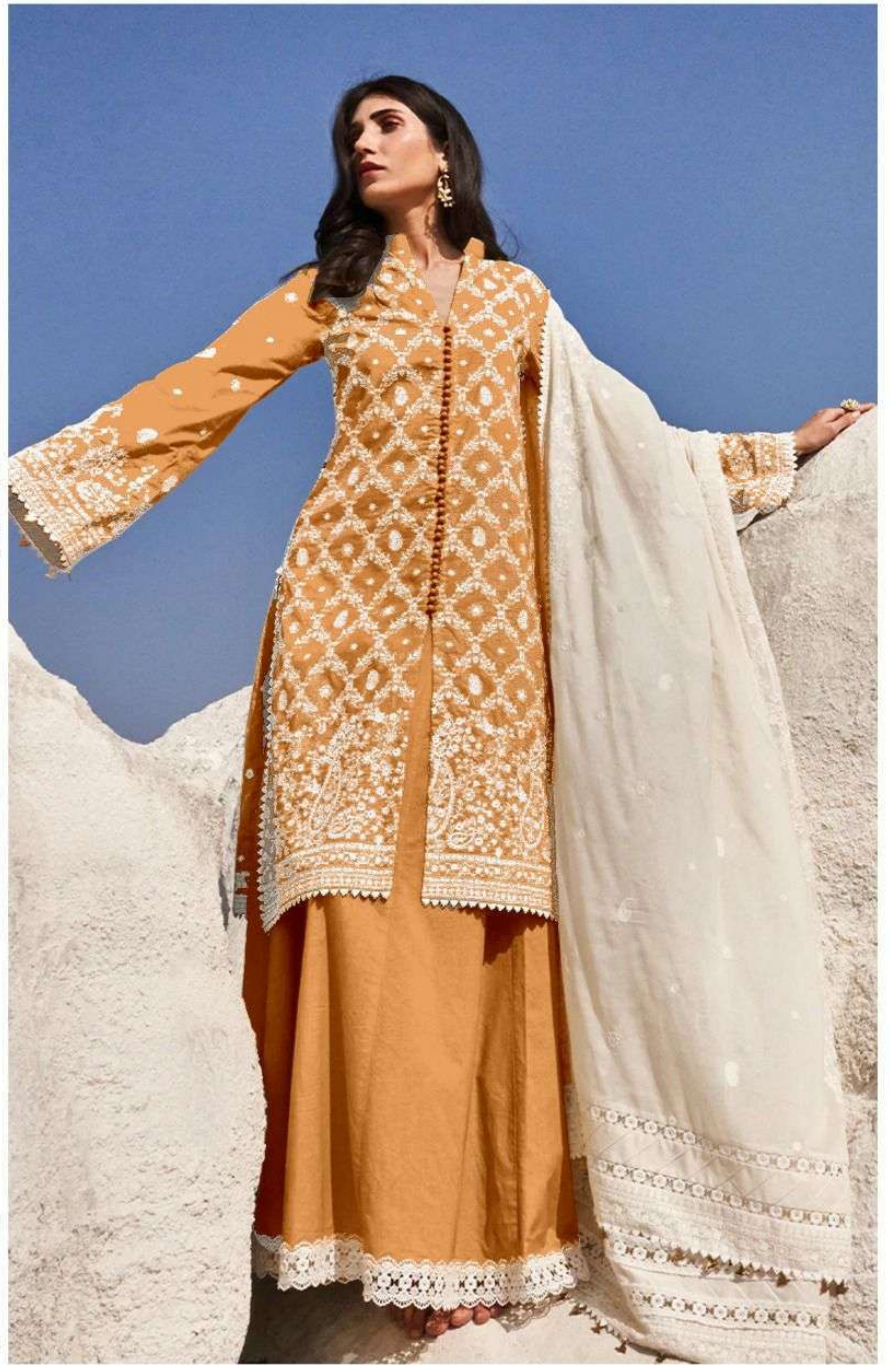
**Rosemeen**<sup>®</sup>

IMAGE CHIKANKARI  
COLLECTION

D.NO.46026



**Fepic®**



**WASHING INTRUCTIONS**

DO NOT USE ANY TYPE OF BLEACH OR STAIN REMOVING CHEMICALS  
BEFORE CUTTING / STITCHING, FABRIC SHOULD BE SOAKED BE SOAKED IN WATER  
( ALL COMPONENTS SEPARATELY ) FOR 15 MINUTES  
DO NOT KEEP WET FABRIC IN TWISTED FROM IN ORDER TO AVOID COPY MARKS |  
WASH COLOURED AND WHITE FABRICS SEPARATELY  
IRON CLOTHES AT MODERATE TEMPERATURE | DO NOT DRY FABRIC IN DIRECT SUNLIGHT  
( EXTRA LACES, HANGINGS AND ACCESSORIES ARE NOT INDUDED )

**Rosemeen®**

IMAGE CHIKANKARI  
COLLECTION

D.NO.46022



**Fepic**®



**Rosemeen**  
IMAGE CHIKANKARI  
COLLECTION

D.NO.46022



**Eepic®**



**Rosemeen®**

IMAGE CHIKANKARI  
COLLECTION  
D.NO.46023





**Fepic**<sup>®</sup>

**Rosemeen**<sup>®</sup>

IMAGE CHIKANKARI  
COLLECTION

D.NO.46021



**Fepic®**



**WASHING INTRUCTIONS**

DO NOT USE ANY TYPE OF BLEACH OR STAIN REMOVING CHEMICALS  
BEFORE CUTTING / STITCHING, FABRIC SHOULD BE SOAKED IN WATER  
( ALL COMPONENTS SEPARATELY ) FOR 15 MINUTES  
DO NOT KEEP WET FABRIC IN TWISTED FROM IN ORDER TO AVOID COPY MARKS |  
WASH COLOURED AND WHITE FABRICS SEPARATELY  
IRON CLOTHES AT MODERATE TEMPERATURE | DO NOT DRY FABRIC IN DIRECT SUNLIGHT  
( EXTRA LACES, HANGINGS AND ACCESSORIES ARE NOT INDEDUD )

**Rosemeen®**  
IMAGE CHIKANKARI  
COLLECTION  
D.NO.46024



**Fepic®**



**WASHING INTRUCTIONS**

DO NOT USE ANY TYPE OF BLEACH OR STAIN REMOVING CHEMICALS  
BEFORE CUTTING / STITCHING, FABRIC SHOULD BE SOAKED IN WATER  
( ALL COMPONENTS SEPARATELY ) FOR 15 MINUTES  
DO NOT KEEP WET FABRIC IN TWISTED FROM IN ORDER TO AVOID COPY MARKS |  
WASH COLOURED AND WHITE FABRICS SEPARATELY  
IRON CLOTHES AT MODERATE TEMPERATURE | DO NOT DRY FABRIC IN DIRECT SUNLIGHT  
( EXTRA LACES, HANGINGS AND ACCESSORIES ARE NOT INDDUED )

**Rosemeen®**

IMAGE CHIKANKARI  
COLLECTION

D.NO.46023





**Fepic®**



**WASHING INTRUCTIONS**

DO NOT USE ANY TYPE OF BLEACH OR STAIN REMOVING CHEMICALS  
BEFORE CUTTING / STITCHING. FABRIC SHOULD BE SOAKED BE SOAKED IN WATER  
( ALL COMPONENTS SEPARATELY ) FOR 15 MINUTES  
DO NOT KEEP WET FABRIC IN TWISTED FROM IN ORDER TO AVOID COPY MARKS |  
WASH COLOURED AND WHITE FABRICS SEPARATELY  
IRON CLOTHES AT MODERATE TEMPERATURE | DO NOT DRY FABRIC IN DIRECT SUNLIGHT  
( EXTRA LACES, HANGINGS AND ACCESSORIES ARE NOT INLUDED )

**Rosemeen®**

**IMAGE CHIKANKARI  
COLLECTION**

D.NO.46025

