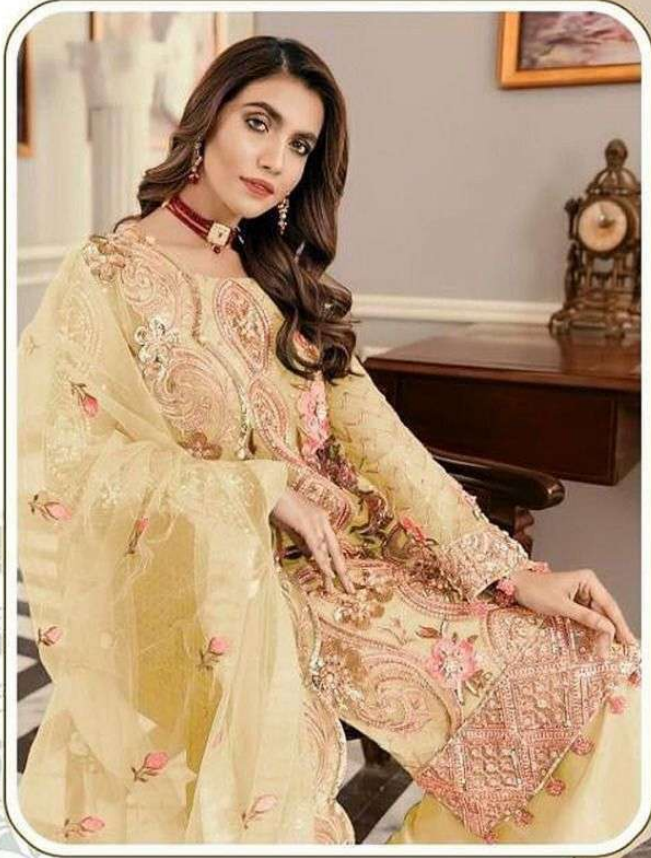


Z  
ZIANA®



**TOP:-** Heavy fox with embroidery work and 3mm sequence

**DUPATTA:-** Heavy Net with embroidery work

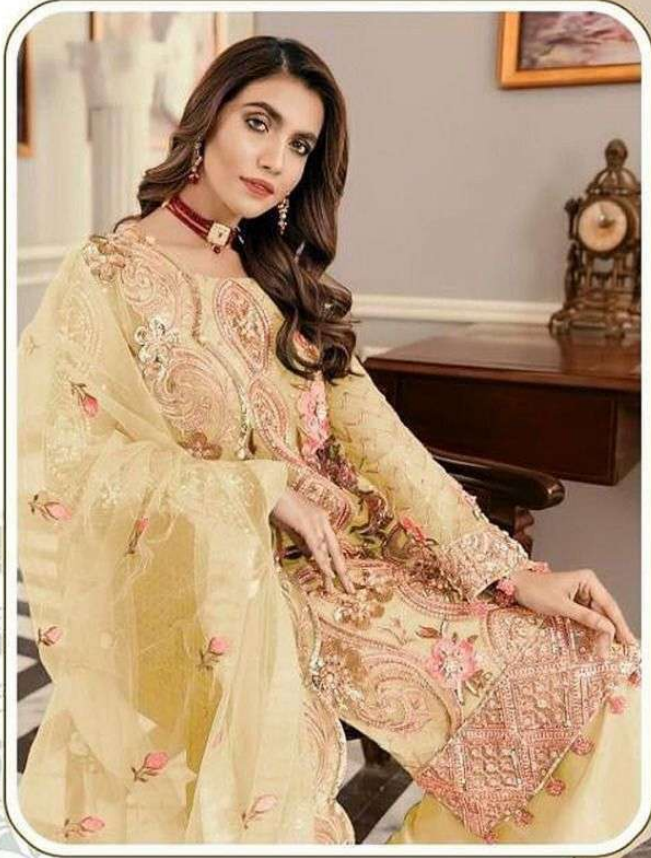
**Bottom /inner :-** Heavy santoon with embroidery patch work

**D.NO.1261-C**

Ⓟ DRY CLEAN ONLY.  
ⓧ DO NOT USE ANY BLEACH OR STAIN REMOVING CHEMICAL.  
☐ IRON THE FABRIC AT MODERATE TEMPERATURE.



Z  
ZIANA®



**TOP:-** Heavy fox with embroidery work and 3mm sequence

**DUPATTA:-** Heavy Net with embroidery work

**Bottom /inner :-** Heavy santoon with embroidery patch work

**D.NO.1261-C**

- Ⓟ DRY CLEAN ONLY.
- ⓧ DO NOT USE ANY BLEACH OR STAIN REMOVING CHEMICAL.
- ☐ IRON THE FABRIC AT MODERATE TEMPERATURE.





D.NO.1261-A



D.NO.1261-B



D.NO.1261-C



D.NO.1261-D

**Z**  
**ZIANA**<sup>®</sup>

**TOP:-** Heavy fox with embroidery work and 3mm sequence

**DUPATTA:-** Heavy Net with embroidery work

**Bottom /inner :-** Heavy santoon with embroidery patch work

**Ⓟ** DRY CLEAN ONLY.  
**ⓧ** DO NOT USE ANY BLEACH OR STAIN REMOVING CHEMICAL.  
**Ⓜ** IRON THE FABRIC AT MODERATE TEMPERATURE.



Z  
ZIANA®



**TOP:-** Heavy fox with embroidery work and 3mm sequence

**DUPATTA:-** Heavy Net with embroidery work

**Bottom /inner :-** Heavy santoon with embroidery patch work

**D.NO.1261-D**

Ⓟ DRY CLEAN ONLY.  
ⓧ DO NOT USE ANY BLEACH OR STAIN REMOVING CHEMICAL.  
☎ IRON THE FABRIC AT MODERATE TEMPERATURE.



Z  
ZIANA®



**TOP:-** Heavy fox with embroidery work and 3mm sequence

**DUPATTA:-** Heavy Net with embroidery work

**Bottom /inner :-** Heavy santoon with embroidery patch work

**D.NO.1261-B**

Ⓟ DRY CLEAN ONLY.  
ⓧ DO NOT USE ANY BLEACH OR STAIN REMOVING CHEMICAL.  
🧊 IRON THE FABRIC AT MODERATE TEMPERATURE.



Z  
ZIANA®



**TOP:-** Heavy fox with embroidery work and 3mm sequence

**DUPATTA:-** Heavy Net with embroidery work

**Bottom /inner :-** Heavy santoon with embroidery patch work

**D.NO.1261-A**

Ⓟ DRY CLEAN ONLY.  
ⓧ DO NOT USE ANY BLEACH OR STAIN REMOVING CHEMICAL.  
Ⓜ IRON THE FABRIC AT MODERATE TEMPERATURE.