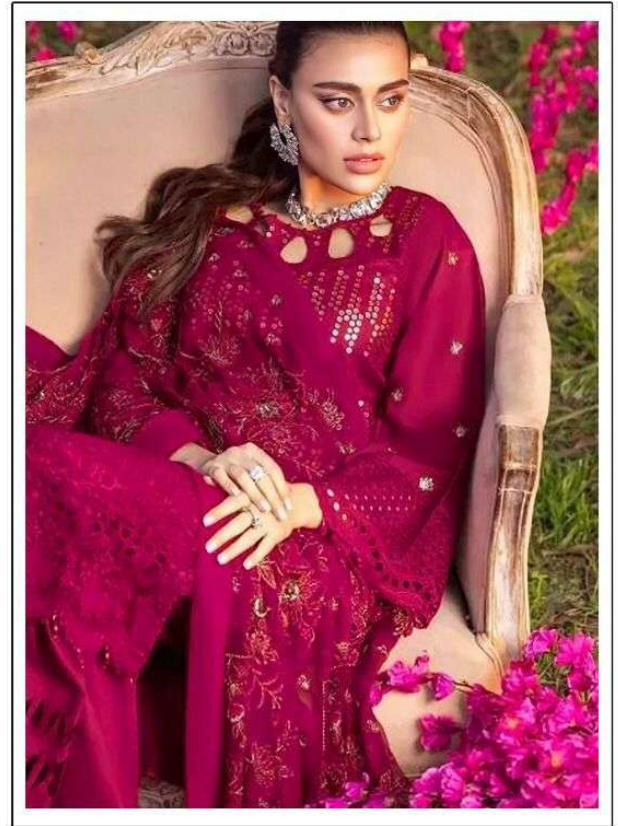


TOP- FOX GEORGETTE WITH CHIKAN EMBROIDERY
WORK WITH 9 MM SIQUANCE (M-134 A)

BOTTOM/INER - SANTOON

DUPATTA - NET WITH WORK

- ☐ DRY CLEAN ONLY.
- ☒ DO NOT USE ANY BLEACH OR STAIN REMOVING CHEMICAL.
- ☒ IRON THE FABRIC AT MODERATE TEMPERATURE.

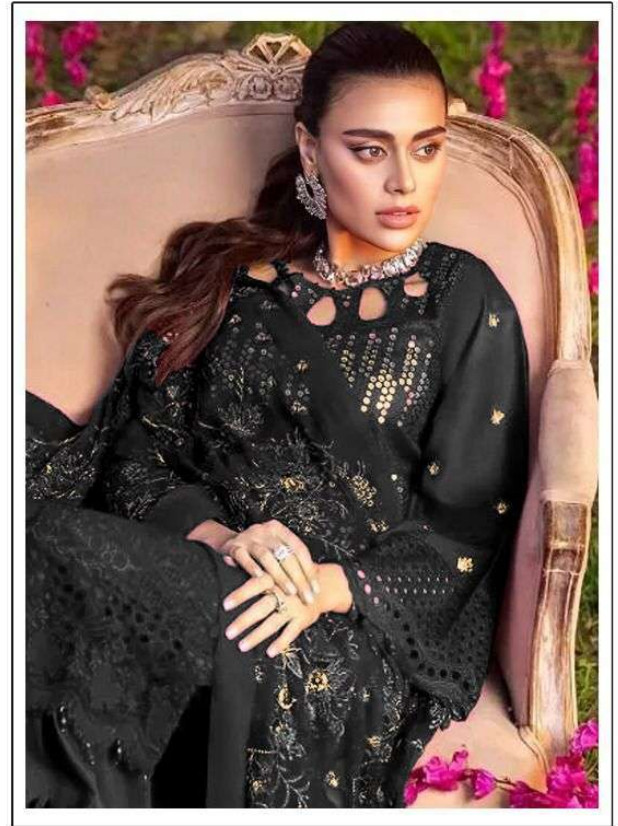


TOP- FOX GEORGETTE WITH CHIKAN EMBROIDERY
WORK WITH 9 MM SIQUANCE (M-134 B)

BOTTOM/INER - SANTOON

DUPATTA - NET WITH WORK

- ☉ DRY CLEAN ONLY.
- ✘ DO NOT USE ANY BLEACH OR STAIN REMOVING CHEMICAL.
- ☎ IRON THE FABRIC AT MODERATE TEMPERATURE.



TOP- FOX GEORGETTE WITH CHIKAN EMBROIDERY
WORK WITH 9 MM SIQUANCE (M-134 A)

BOTTOM/INER - SANTOON

DUPATTA - NET WITH WORK

- ☐ DRY CLEAN ONLY.
- ✘ DO NOT USE ANY BLEACH OR STAIN REMOVING CHEMICAL.
- ☐ IRON THE FABRIC AT MODERATE TEMPERATURE.

Net Embroidered
Dupatta

Emb
Sleeves

Heavy Chikan Emb Top

Bottom





**Net Embroidered
Dupatta**

**Emb
Sleeves**

Heavy Chikan Emb Top

Bottom



MUSTO
TOP - FOX GEORGETTE WITH CHIKAN EMBROIDERY
WORK WITH FOX GEORGETTE (M-34-36)
BOTTOM - SATEEN
DUPATTA - NET WITH WORK
DO NOT CLEAN WITH
DO NOT USE ANY BLEACH OR OTHER BLEACHING CHEMICAL
IRON THE GARMENT AT MODERATE TEMPERATURE