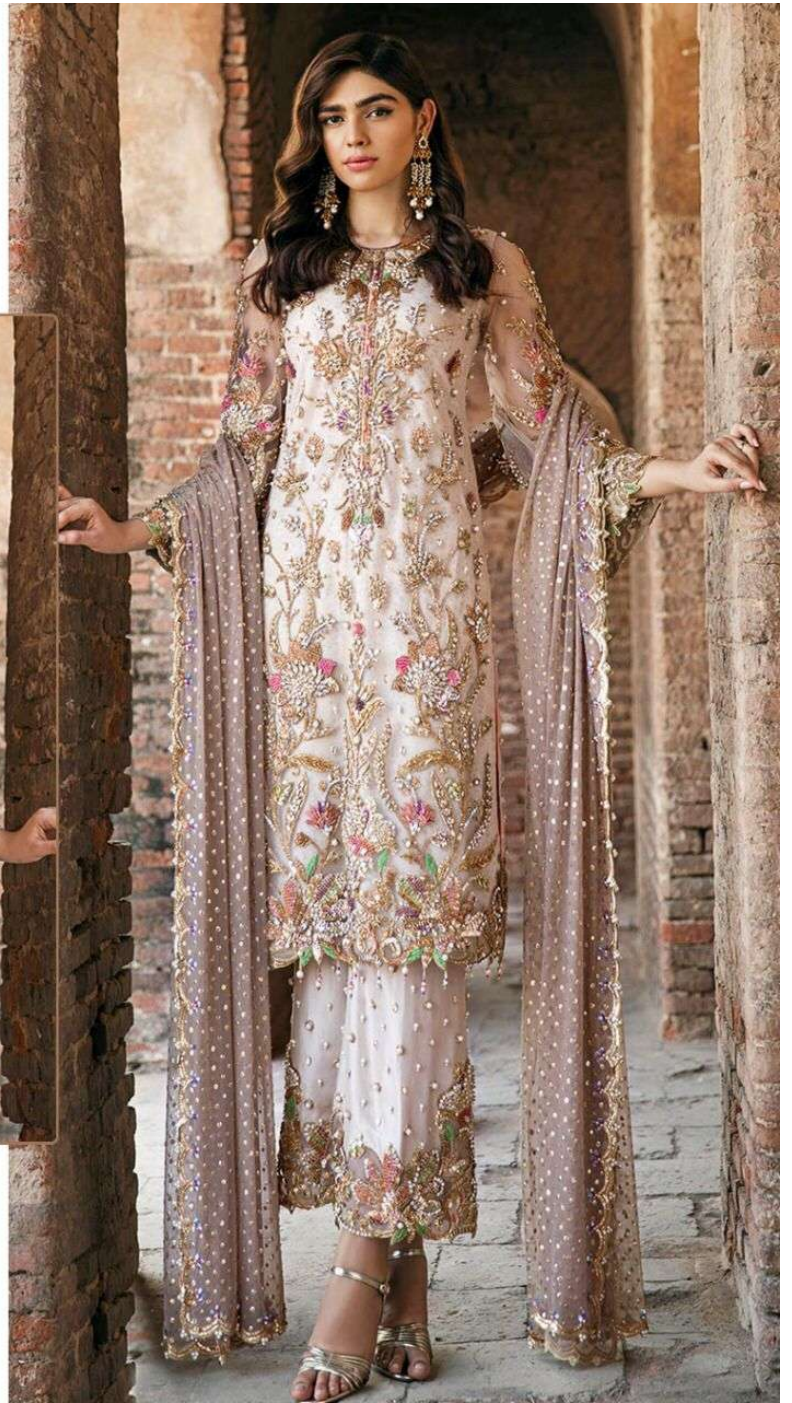
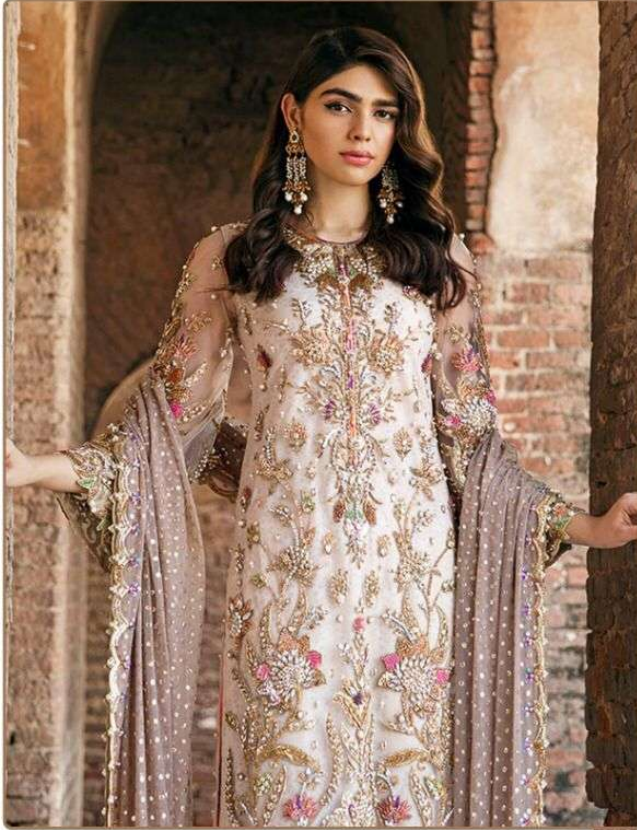




#R-406-A

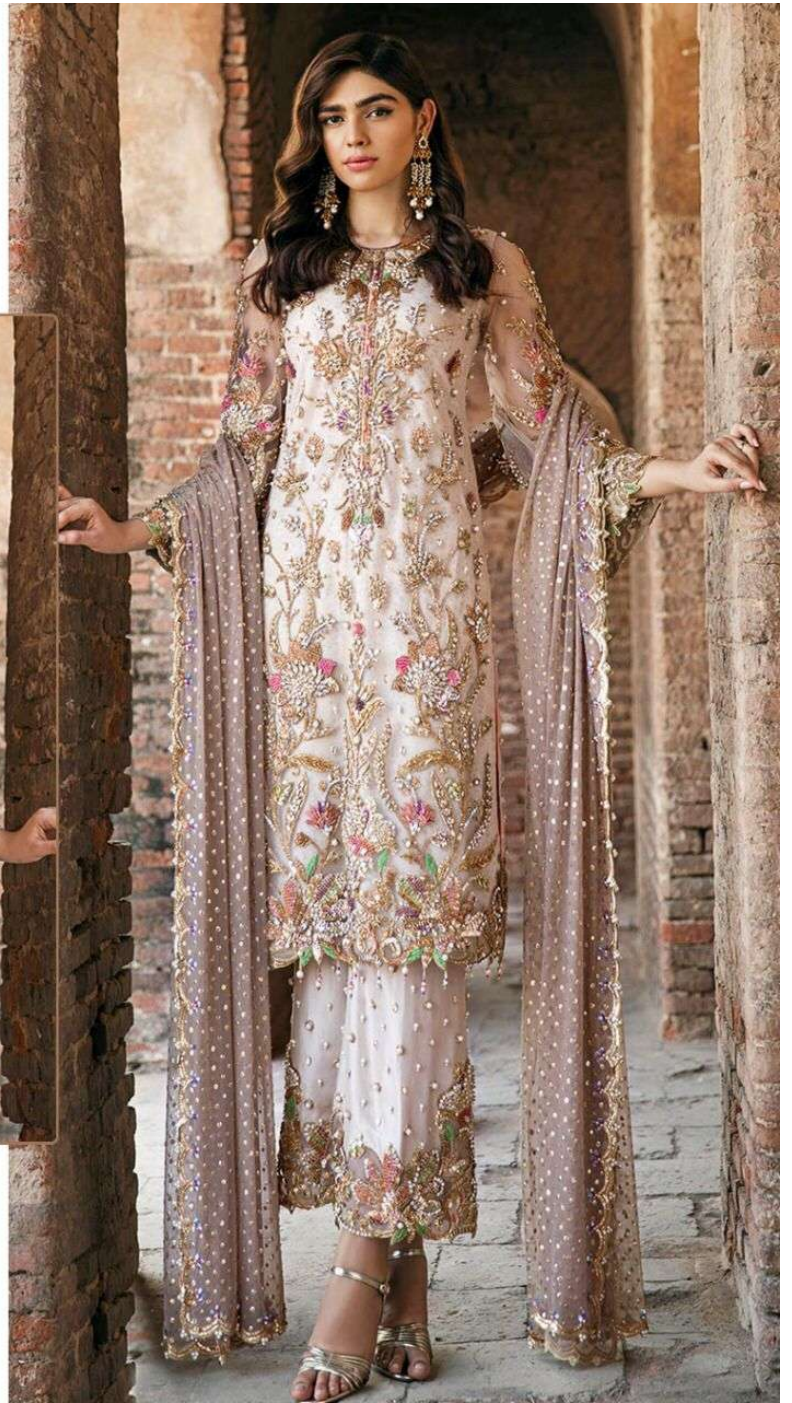
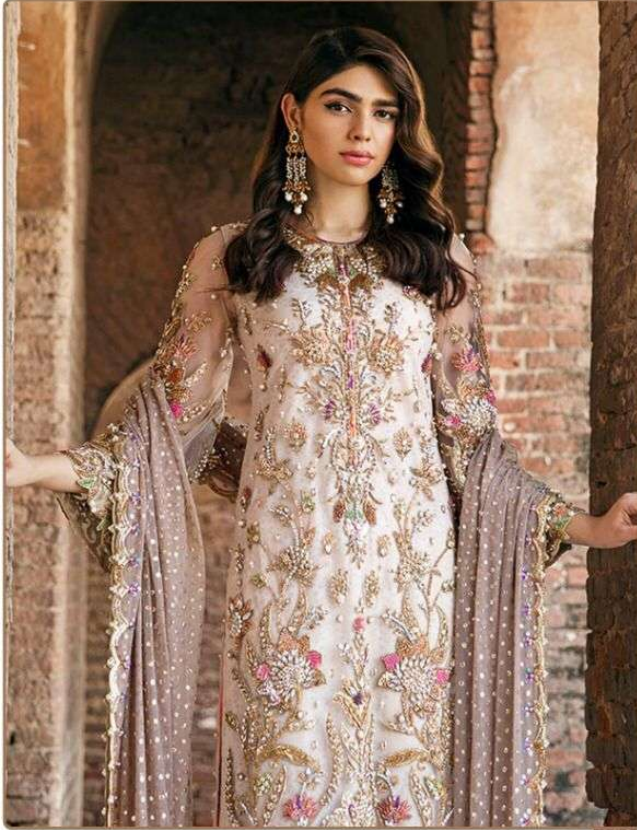


TOP- FOX GEORGETTE WITH HEAVY EMBROIDERY
BOTTOM- SANTOON
DUPATTA - NAMEEN WITH EMBROIDERY

- Ⓟ DRY CLEAN ONLY.
- ✘ DO NOT USE ANY BLEACH OR STAIN REMOVING CHEMICAL.
- ☎ IRON THE FABRIC AT MODERATE TEMPERATURE.



#R-406-A

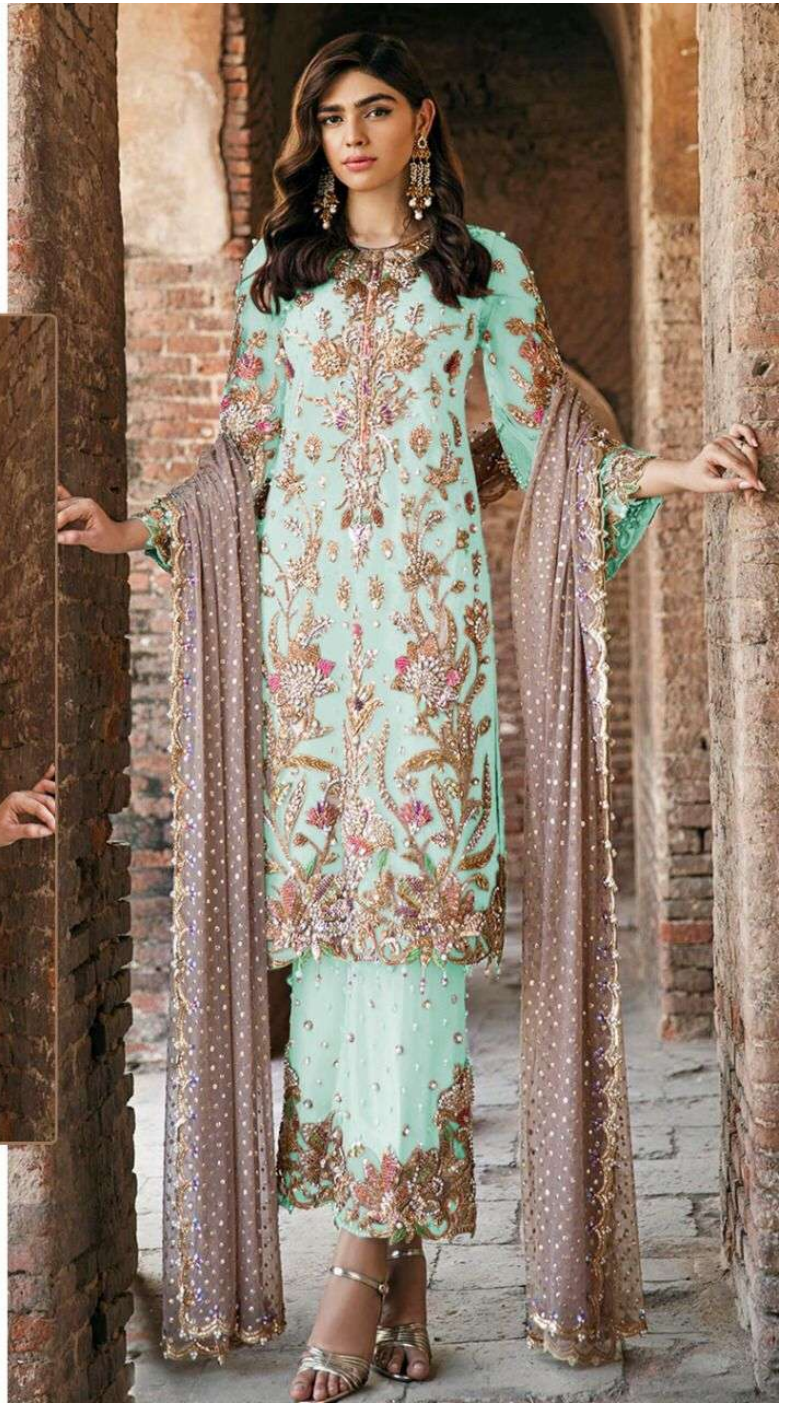
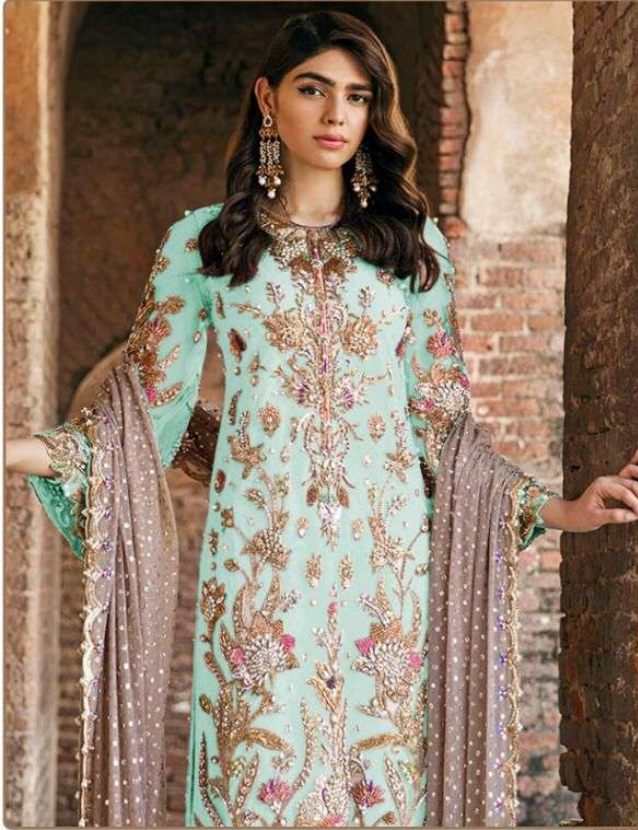


TOP- FOX GEORGETTE WITH HEAVY EMBROIDERY
BOTTOM- SANTOON
DUPATTA - NAMEEN WITH EMBROIDERY

Ⓟ DRY CLEAN ONLY.
⊗ DO NOT USE ANY BLEACH OR STAIN REMOVING CHEMICAL.
☎ IRON THE FABRIC AT MODERATE TEMPERATURE.



#R-406-C

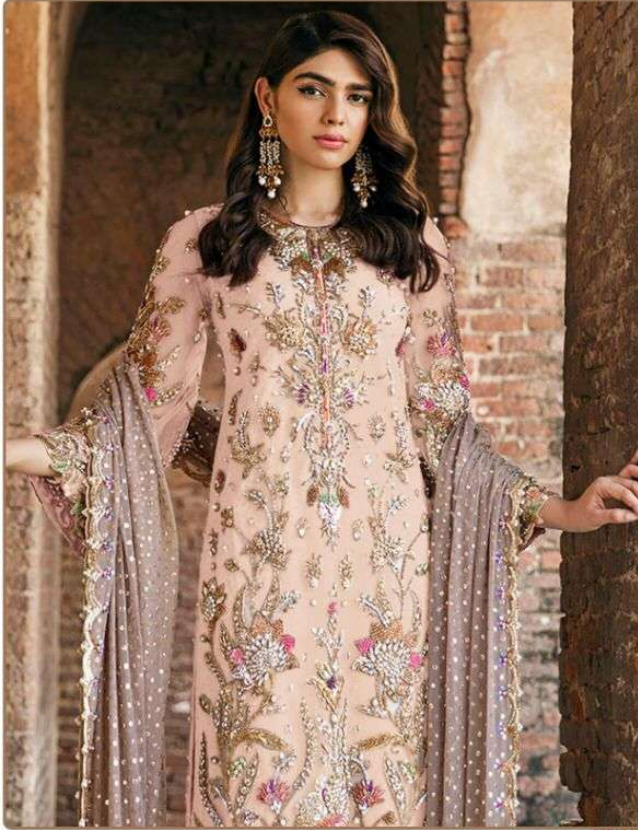


TOP- FOX GEORGETTE WITH HEAVY EMBROIDERY
BOTTOM- SANTOON
DUPATTA - NAMEEN WITH EMBROIDERY

Ⓟ DRY CLEAN ONLY.
ⓧ DO NOT USE ANY BLEACH OR STAIN REMOVING CHEMICAL.
Ⓜ IRON THE FABRIC AT MODERATE TEMPERATURE.

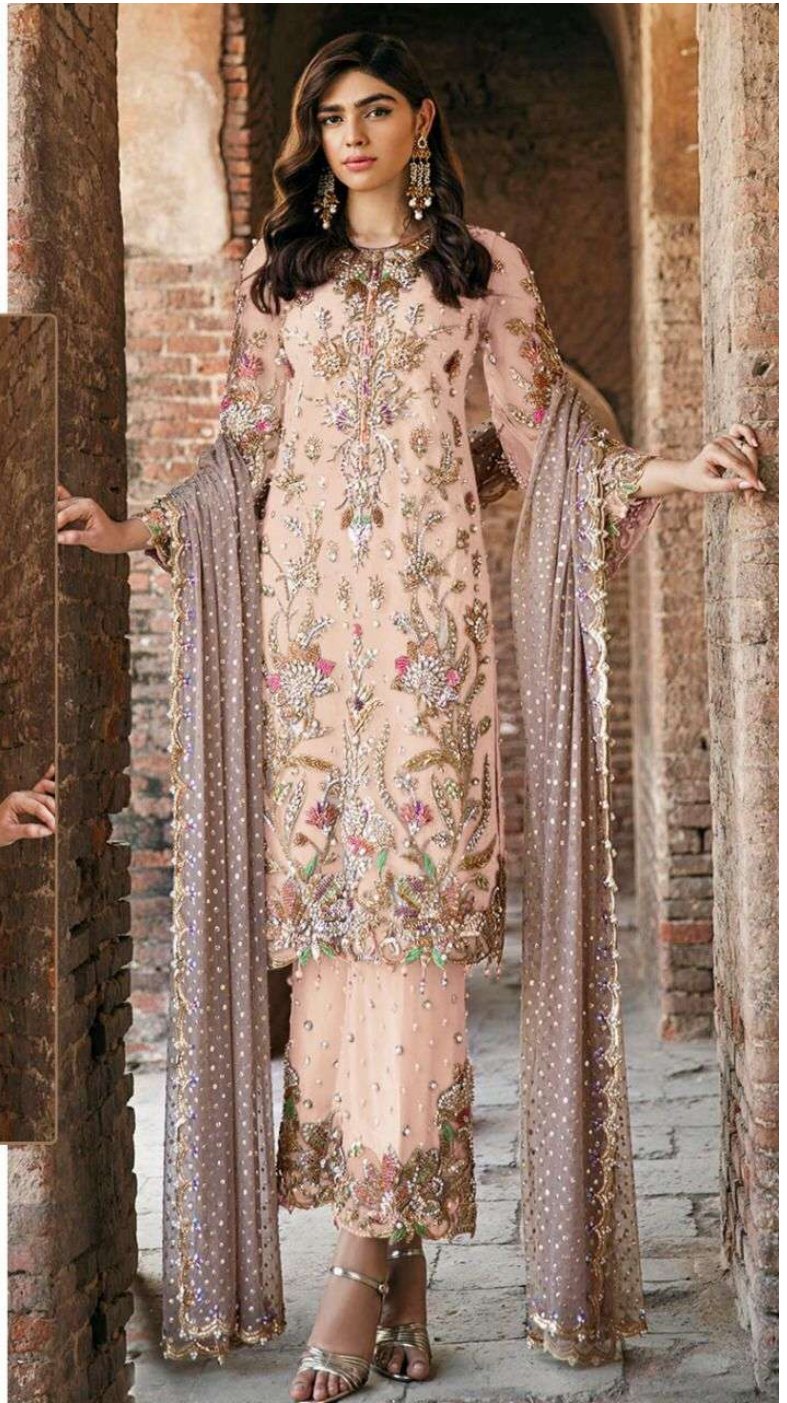


#R-406-D



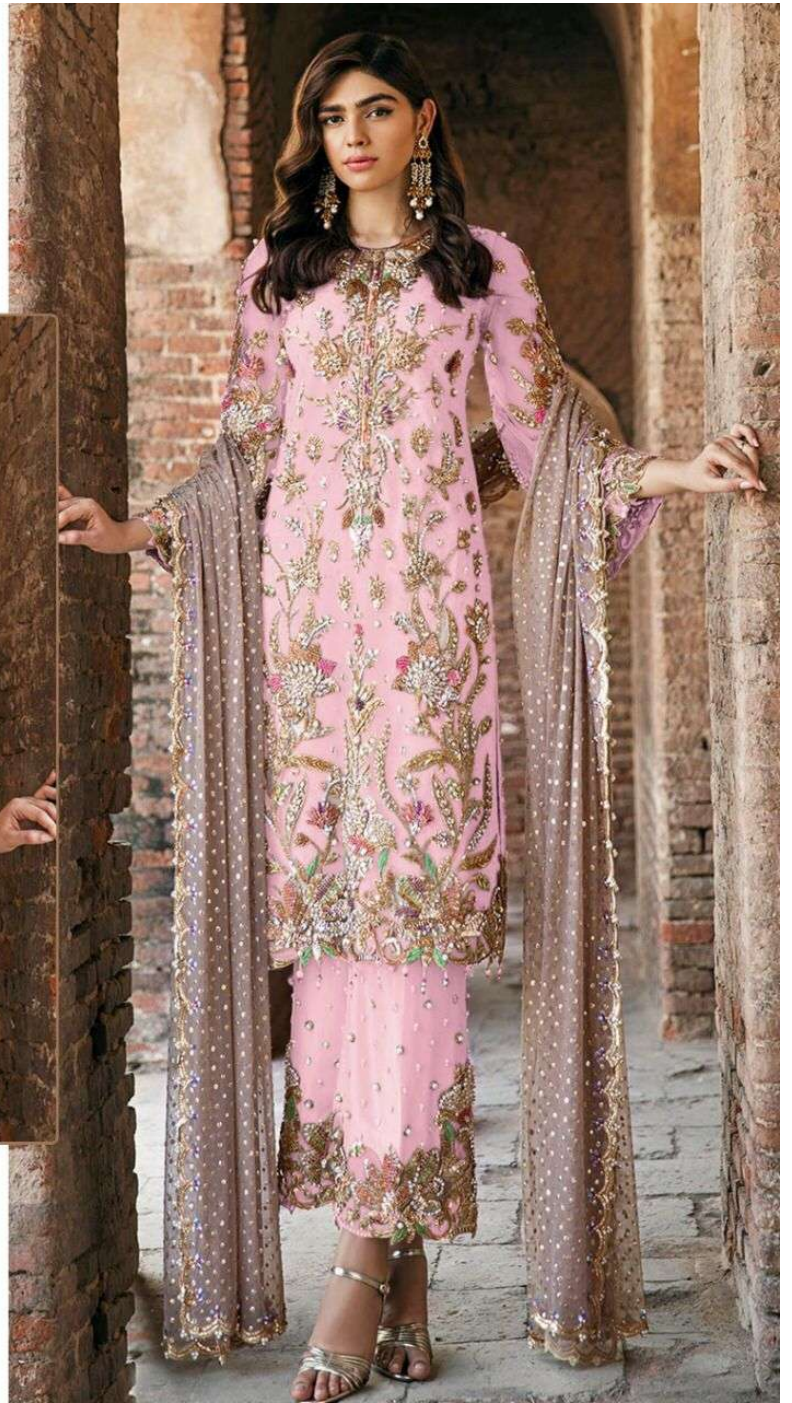
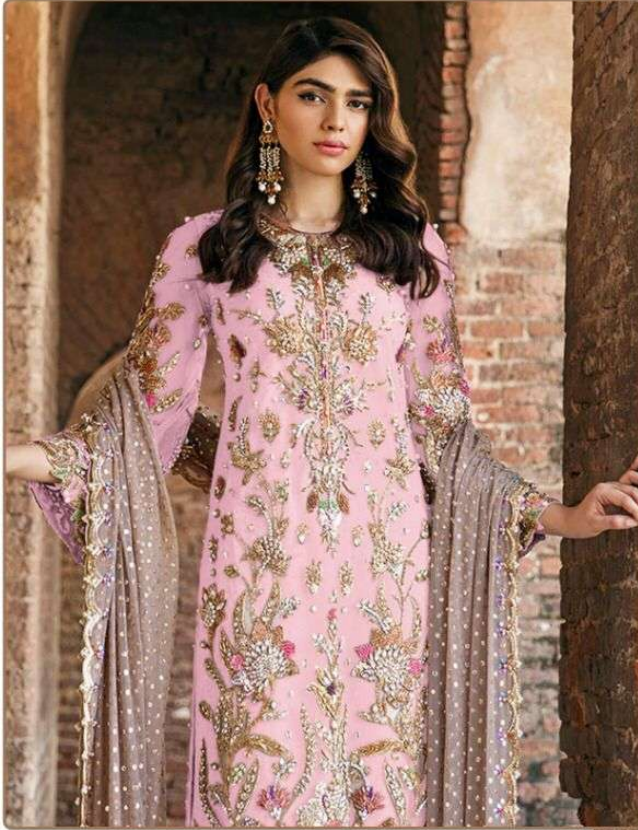
TOP- FOX GEORGETTE WITH HEAVY EMBROIDERY
BOTTOM- SANTOON
DUPATTA - NAMEEN WITH EMBROIDERY

- Ⓟ DRY CLEAN ONLY.
- ✂ DO NOT USE ANY BLEACH OR STAIN REMOVING CHEMICAL.
- ☎ IRON THE FABRIC AT MODERATE TEMPERATURE.





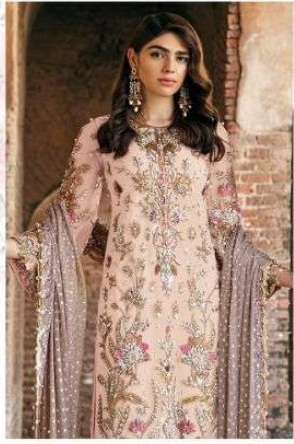
#R-406-B



TOP- FOX GEORGETTE WITH HEAVY EMBROIDERY
BOTTOM- SANTOON
DUPATTA - NAMEEN WITH EMBROIDERY

Ⓟ DRY CLEAN ONLY.
ⓧ DO NOT USE ANY BLEACH OR STAIN REMOVING CHEMICAL.
☎ IRON THE FABRIC AT MODERATE TEMPERATURE.

Ramsha®
406-NX



Ramsha®
406-NX



#R-406-A



#R-406-B



#R-406-C



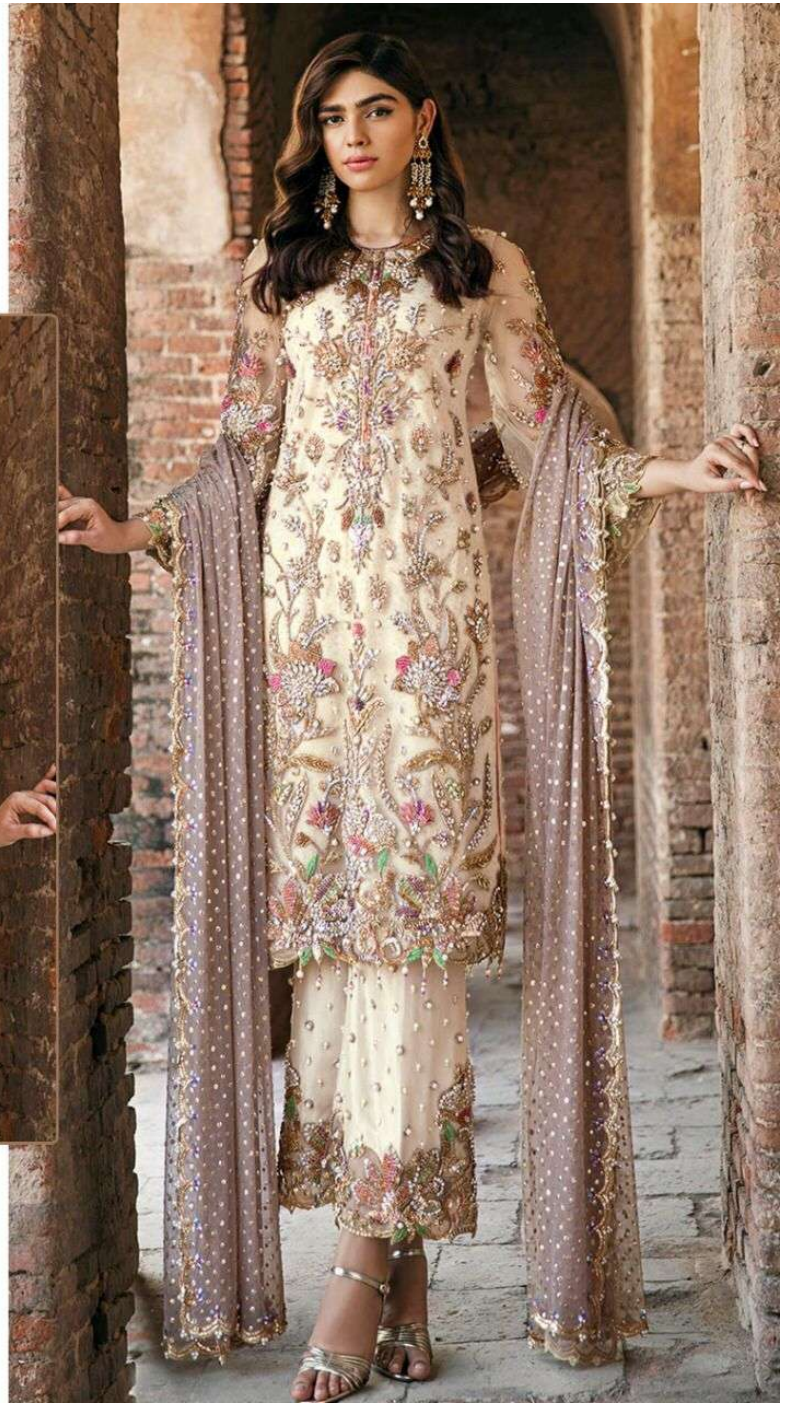
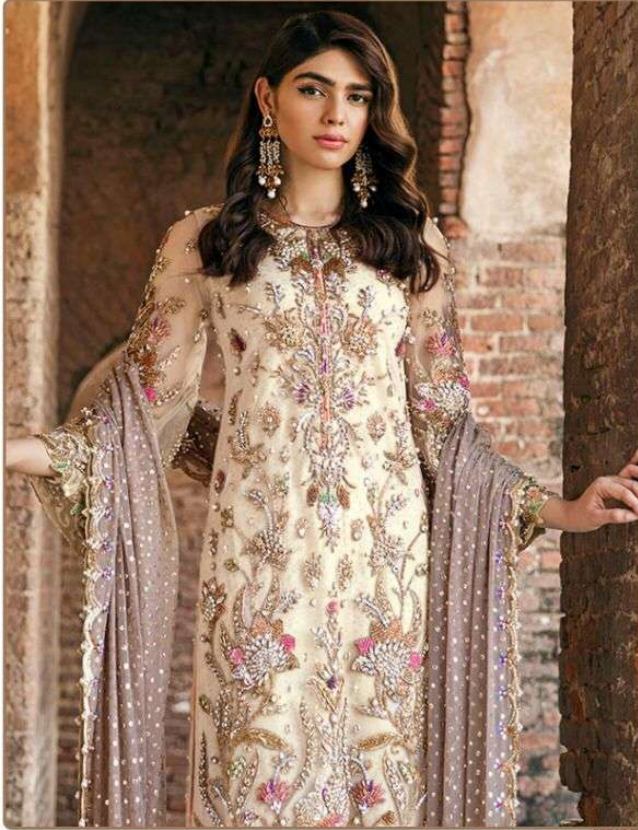
#R-406-D



#R-406-E



#R-406-E



TOP- FOX GEORGETTE WITH HEAVY EMBROIDERY
BOTTOM- SANTOON
DUPATTA - NAMEEN WITH EMBROIDERY

- Ⓟ DRY CLEAN ONLY.
- ✘ DO NOT USE ANY BLEACH OR STAIN REMOVING CHEMICAL.
- ☎ IRON THE FABRIC AT MODERATE TEMPERATURE.