

# SAADGI

*nakkashi*<sup>®</sup>



# SAADGI

*nakkashi*<sup>®</sup>



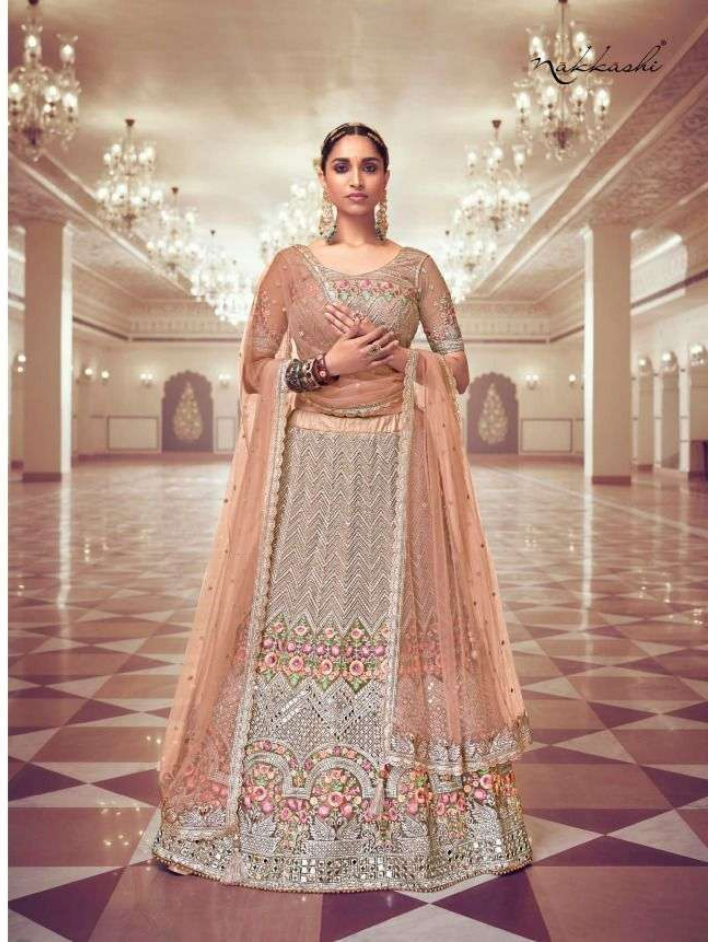


A  
born  
classic beauty  
myic passion  
"stylish elegance"

*nakkashi*



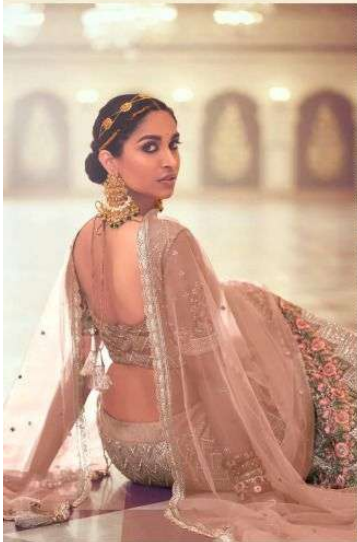
5191





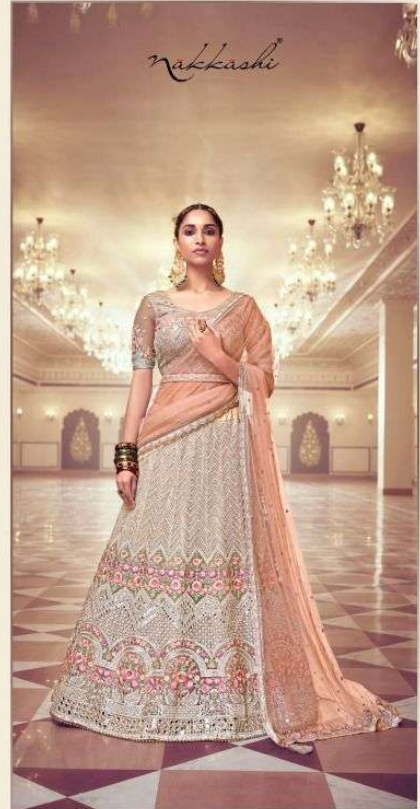
DUSTY PEACH NET LEHENGA HAVING MIRROR  
WORK ON IT AND DECORATED WITH JARRAN, HAVING SAME COLOUR  
NET DUPATTA WITH CUTWORK ON IT, PAIRED WITH SAME  
COLOUR EMBROIDERY BLOUSE AND BELT

*nakkashi*



5191





5191



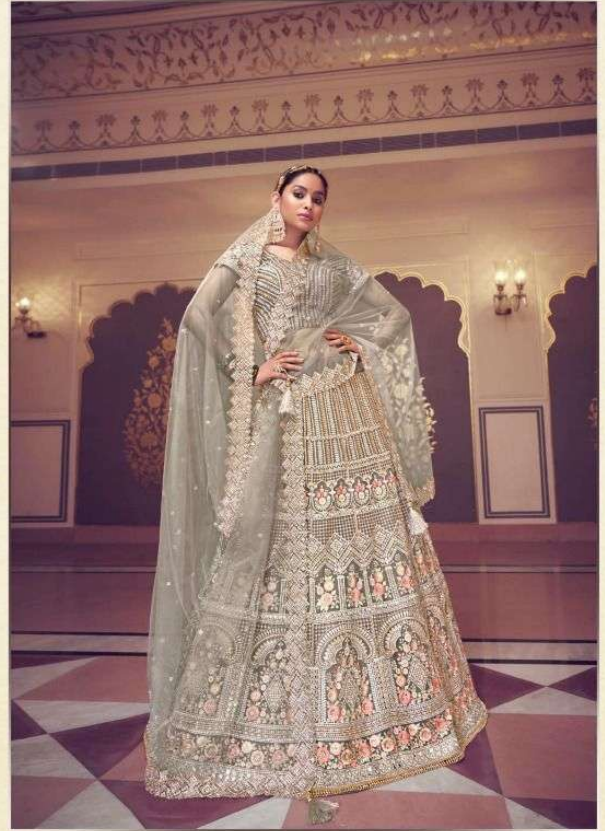
AQUA BLUE NET LEHENGA HAVING MIRROR WORK ON IT AND DECORATED WITH JIRKA, HAVING SAME COLOUR NET DUPATTA WITH ZARI AND JIRKA WORK ON IT, PAIRED WITH SAME COLOUR EMBROIDERY BLOUSE AND BELT





*nakkashi*







GREYISH NET LEHENGA  
HAVING MIRROR WORK ON IT AND  
DECORATED WITH JARNA,  
ANYVING BANGI COLOUR NET TRIPPLA WITH  
CUTWORK ON IT BANGI WITH BANGI COLOUR  
EMBROIDERY ALONG AND NET

*nakkashi*



5193







*nakkashi*



5194



DIRTY PINK NET LEHENGA HAVING MIRROR WORK ON IT AND DECORATED WITH JARRAS, HAVING SAME COLOUR NET DURATA WITH ZARI WORK ON IT, PAIRED WITH SAME COLOUR EMBROIDERY BLOUSE AND BELT



5195



*nakkashi*



DUSTY PINK NET LEHENGA HAVING MIRROR WORK ON IT AND DECORATED WITH JERKAN,  
HAVING SAME COLOUR NET DUBATTA WITH ZARI WORK ON IT PAISED WITH SAME COLOUR EMBROIDERY BLOUSE AND BELT



*nakkashi*

LIGHT WEIGHT BUT HEAVY ON DETAILS  
HANDMADE ON IT WITH EMBROIDERY WITH ZAR PARAN,  
MANY SHARPS EMBROIDERY WITH ZAR PARAN ON IT,  
WORKED WITH LAKH, SILK AND SILVER  
EMBROID AND ZAR.

5196





DUSTY MAUVE NET LEHENGA HAVING ZARI WORK ON IT AND DECORATED WITH JARJAN.  
HAVING SAME COLOUR NET DUPATTA WITH ZARI WORK ON IT PAIRED  
WITH SAME COLOUR SHIMMERY SLOVEE AND BELT





SEA GREEN NET LEBENGA HAVING GOTA WORK ON IT AND DECORATED WITH JAKKAS. HAVING SAME COLOUR NET DURAYYA WITH ZARI WORK ON IT, PAIRED WITH SAME COLOUR EMBROIDERY BLOUSE AND BELT



5197



