





आाawiya™



2103



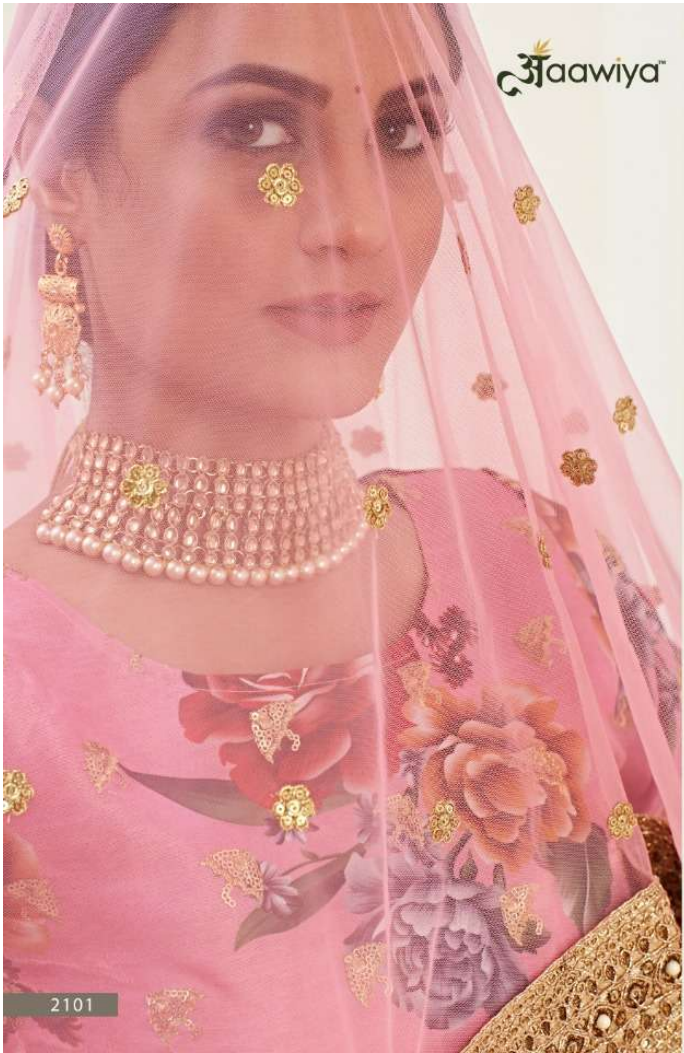






2102





2101

Aaawiya™



2101



2102



2103



2104

Aaawiya™



2105

Hiranyam

VOL-01
Aaawiya™
OFFICIAL







Aaawiya™

Hiranyam

VOL-01



WEIGHT: 1.8KG

| SKU | MAIN COLOUR | LEHENGA FABRIC | BLOUSE FABRIC | DUPATTA FABRIC | WORK TYPE | SIZE (SEMI STITCHED) | PRICE |
|------|-------------|----------------|----------------|----------------|---|-------------------------|--------|
| 2101 | PINK | BANGLORI SATIN | BANGLORI SATIN | HEAVY NET | FLORAL PRINT, DORI, ZARI AND SEQUINS EMBROIDERY | UP TO 42 BUST AND WAIST | 2745/- |
| 2102 | BLACK | BANGLORI SATIN | BANGLORI SATIN | HEAVY NET | FLORAL PRINT, DORI, ZARI AND SEQUINS EMBROIDERY | UP TO 42 BUST AND WAIST | 2745/- |
| 2103 | ROSY BROWN | BANGLORI SATIN | BANGLORI SATIN | HEAVY NET | FLORAL PRINT, DORI, ZARI AND SEQUINS EMBROIDERY | UP TO 42 BUST AND WAIST | 2745/- |
| 2104 | WHITE | BANGLORI SATIN | BANGLORI SATIN | HEAVY NET | FLORAL PRINT, DORI, ZARI AND SEQUINS EMBROIDERY | UP TO 42 BUST AND WAIST | 2745/- |
| 2105 | PISTA | BANGLORI SATIN | BANGLORI SATIN | HEAVY NET | FLORAL PRINT, DORI, ZARI AND SEQUINS EMBROIDERY | UP TO 42 BUST AND WAIST | 2745/- |

TOTAL DESIGNS 5 PCS.

TOTAL AMOUNT : 13725/-

DIGITAL PRINT WITH DORI, SEQUINS EMBROIDERED BORDER AND PEARL WORK.

LEHENGA FLAIR : 3.50 MTR
INNER : ART SILK WITH 19' INCH CAN-CAN LAYERED NET.
SIZE : WAIST-43" HEIGHT-43"

BLOUSE (UNSTITCHED)
FABRIC : BANGLORY SATIN
WORK : JARI SEQUINS BUTTI WORK
COME WITH 1MTR FABRIC

DUPATTA FABRIC : NET
WORK : DORI, SEQUINS EMBROIDERED
BORDER AND PEARL WORK.
LENGTH: 2.25 MTR

