



#R-445-B



TOP- FOX GEORGETTE WITH HEAVY EMBROIDERY  
BOTTOM- DULL SANTOON  
DUPATTA - NET WITH EMBROIDERY

Ⓟ DRY CLEAN ONLY.  
ⓧ DO NOT USE ANY BLEACH OR STAIN REMOVING CHEMICAL.





#R-445-B



TOP- FOX GEORGETTE WITH HEAVY EMBROIDERY  
BOTTOM- DULL SANTOON  
DUPATTA - NET WITH EMBROIDERY

Ⓟ DRY CLEAN ONLY.  
ⓧ DO NOT USE ANY BLEACH OR STAIN REMOVING CHEMICAL.





#R-445-D



**TOP-** FOX GEORGETTE WITH HEAVY EMBROIDERY  
**BOTTOM-** DULL SANTOON  
**DUPATTA -** NET WITH EMBROIDERY

Ⓟ DRY CLEAN ONLY.  
ⓧ DO NOT USE ANY BLEACH OR STAIN REMOVING CHEMICAL.



#R-445-E

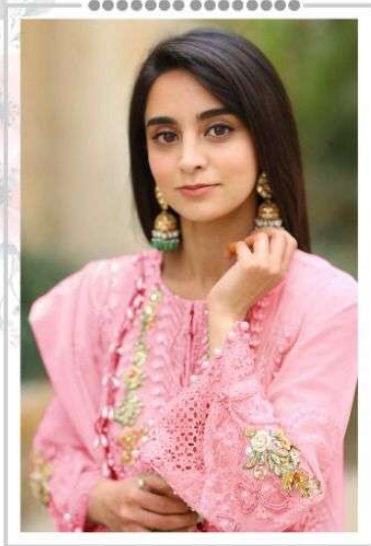


TOP- FOX GEORGETTE WITH HEAVY EMBROIDERY  
BOTTOM- DULL SANTOON  
DUPATTA - NET WITH EMBROIDERY

Ⓟ DRY CLEAN ONLY.  
ⓧ DO NOT USE ANY BLEACH OR STAIN REMOVING CHEMICAL.



Ramsha®  
445-NX



Ramsha®  
445-NX



#R-445-B



#R-445-C



#R-445-D



#R-445-E



#R-445-C



TOP- FOX GEORGETTE WITH HEAVY EMBROIDERY  
BOTTOM- DULL SANTOON  
DUPATTA - NET WITH EMBROIDERY

Ⓟ DRY CLEAN ONLY.  
ⓧ DO NOT USE ANY BLEACH OR STAIN REMOVING CHEMICAL.





Emb Net Dupatta

Emb Front

Emb Sleeves

Patch

Patch

*Ramsha*  
#R-445-C

TOP- FOX GEORGETTE WITH HEAVY EMBROIDERY  
BOTTOM- DULL SANTOON  
DUPATTA- NET WITH EMBROIDERY

☞ DRY CLEAN ONLY  
☞ DO NOT USE ANY BLEACH OR STAIN REMOVING CHEMICAL



Emb Net  
Dupatta

Emb Front

Emb Sleeves

Patch

Patch







Emb Net  
Dupatta

Emb Front

Emb Sleeves

Patch

Patch

*Ramsha*  
#R-445-B

TOP- FOR GEORGETTE WITH HEAVY EMBROIDERY  
BOTTOM- DOLL SANTOON  
DUPATTA- NET WITH EMBROIDERY

Ⓢ DRY CLEAN ONLY  
Ⓢ DO NOT USE ANY BLEACH OR STAIN REMOVING CHEMICAL



Emb Net Dupatta

Emb Front

Emb Sleeves

Patch

Patch

