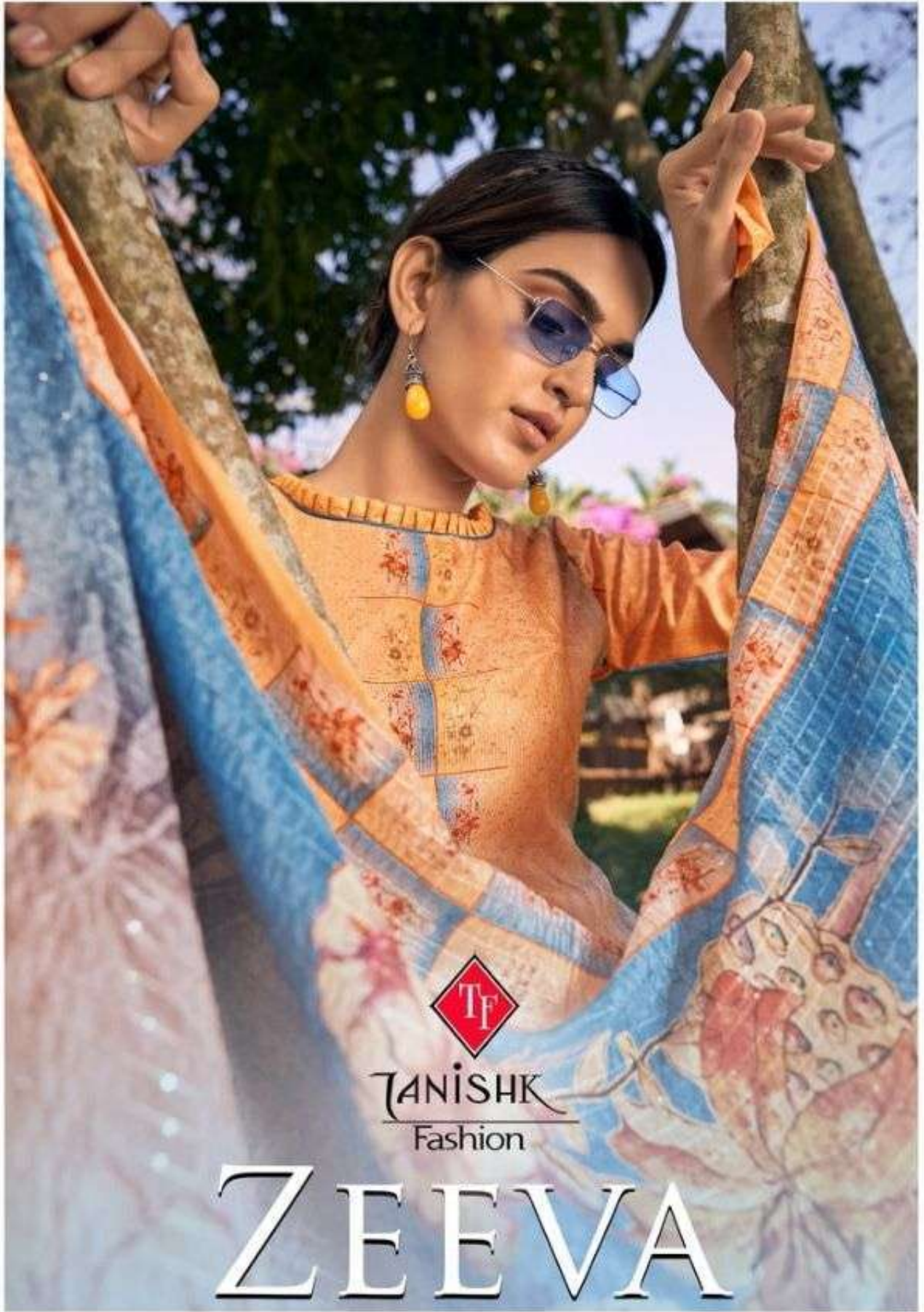




TANISHK
Fashion

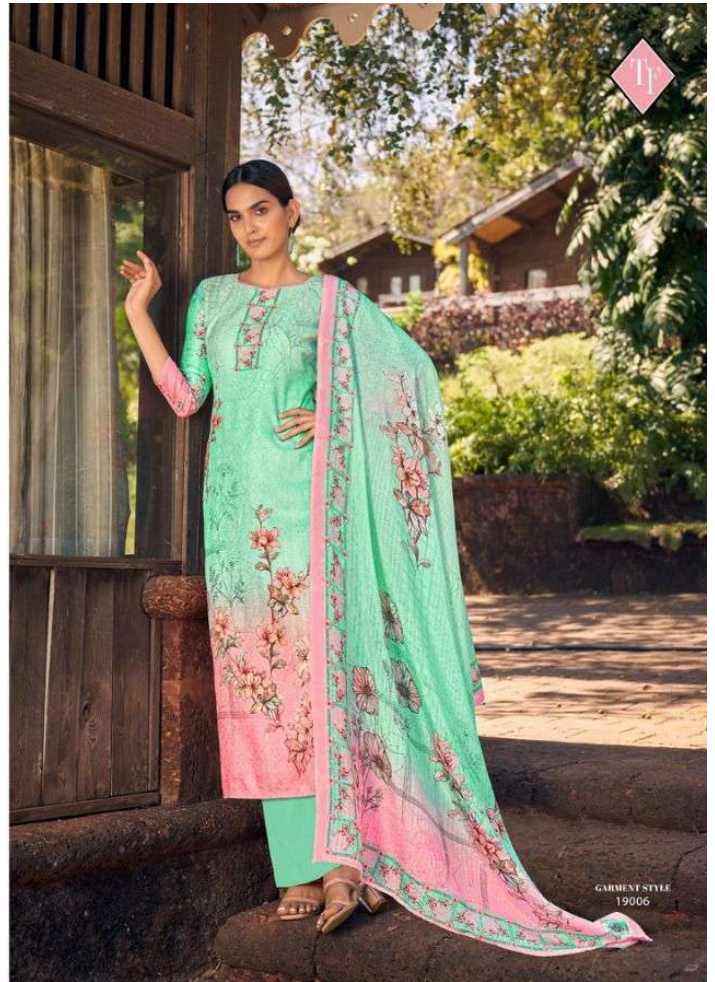
ZEEVA



TANISHK
Fashion

ZEEVA









TF

GARMENT STYLE
19001

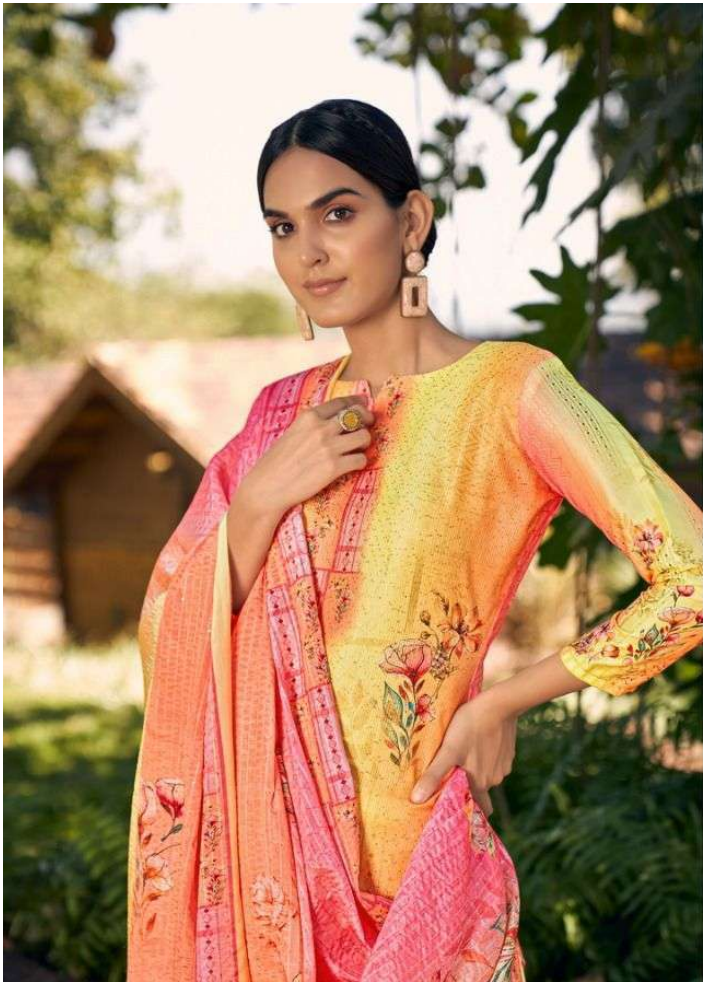






GARMENT STYLE
19002



A stylized graphic design featuring a woman's face and hands. The face is partially obscured by a large, white, stylized letter 'P' that is cut out to reveal the woman's features. A red diamond shape containing the letters 'TF' is positioned in the center of the 'P'. The background is a soft, light blue and white sky. Below the graphic, the text 'HANTE INTERPRETATIONS' is written in a bold, serif font. Underneath this, in a smaller font, is the tagline 'Traditional Yet Modern' and 'the perfect mix of modern and ethnic: all you have to do choose your favourite.'

**HANTE
INTERPRETATIONS**

Traditional Yet Modern
the perfect mix of modern and ethnic: all you have to do choose your favourite.

PRESENTING TO YOU OUR NEW CATALOGUE

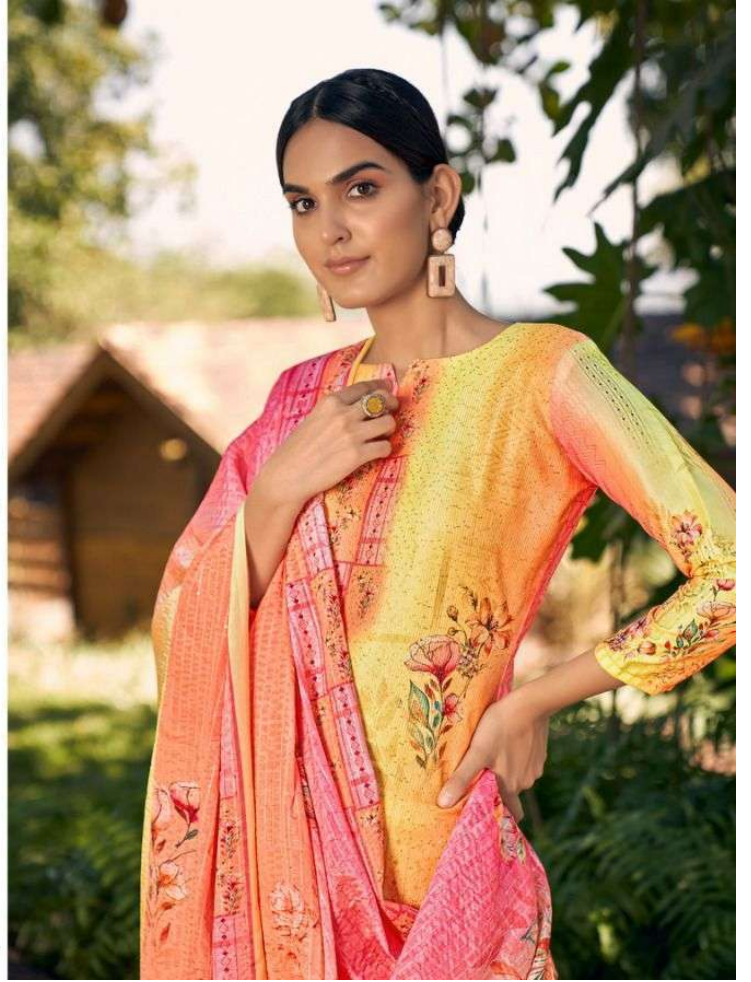
Zeeva

FROM RSF FASHIONS,

+ TOP :- +
JAAM CROCHET WITH
DIGITAL

+ BOTTOM :- +
PURE COTTON

+ DUPATTA :- +
PURE MUSLIN DIGITAL
CROCHET





19001



19002



19003



19004



19005



19006