

**Fepic®**



**WASHING INSTRUCTIONS**

DO NOT USE ANY TYPE OF BLEACH OR STAIN REMOVING CHEMICALS  
BEFORE CUTTING / STITCHING. FABRIC SHOULD BE SOAKED IN WATER  
( ALL COMPONENTS SEPARATELY ) FOR 15 MINUTES

DO NOT KEEP WET FABRIC IN TWISTED FORM IN ORDER TO AVOID COPY MARKS |  
WASH COLOURED AND WHITE FABRICS SEPARATELY

IRON CLOTHES AT MODERATE TEMPERATURE | DO NOT DRY FABRIC IN DIRECT SUNLIGHT  
( EXTRA LACES, HANGINGS AND ACCESSORIES ARE NOT INCLUDED )



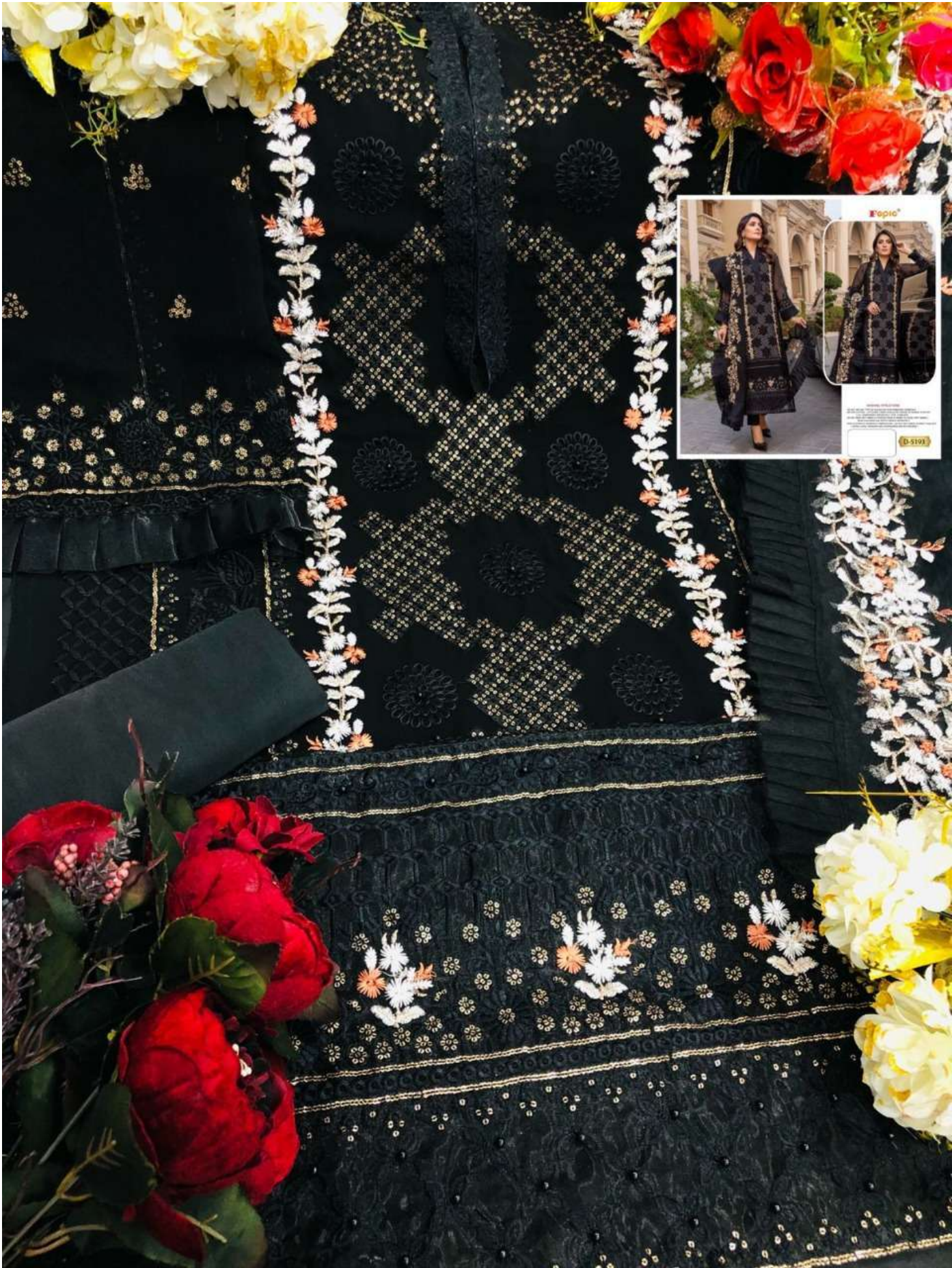
**D-5193 D**

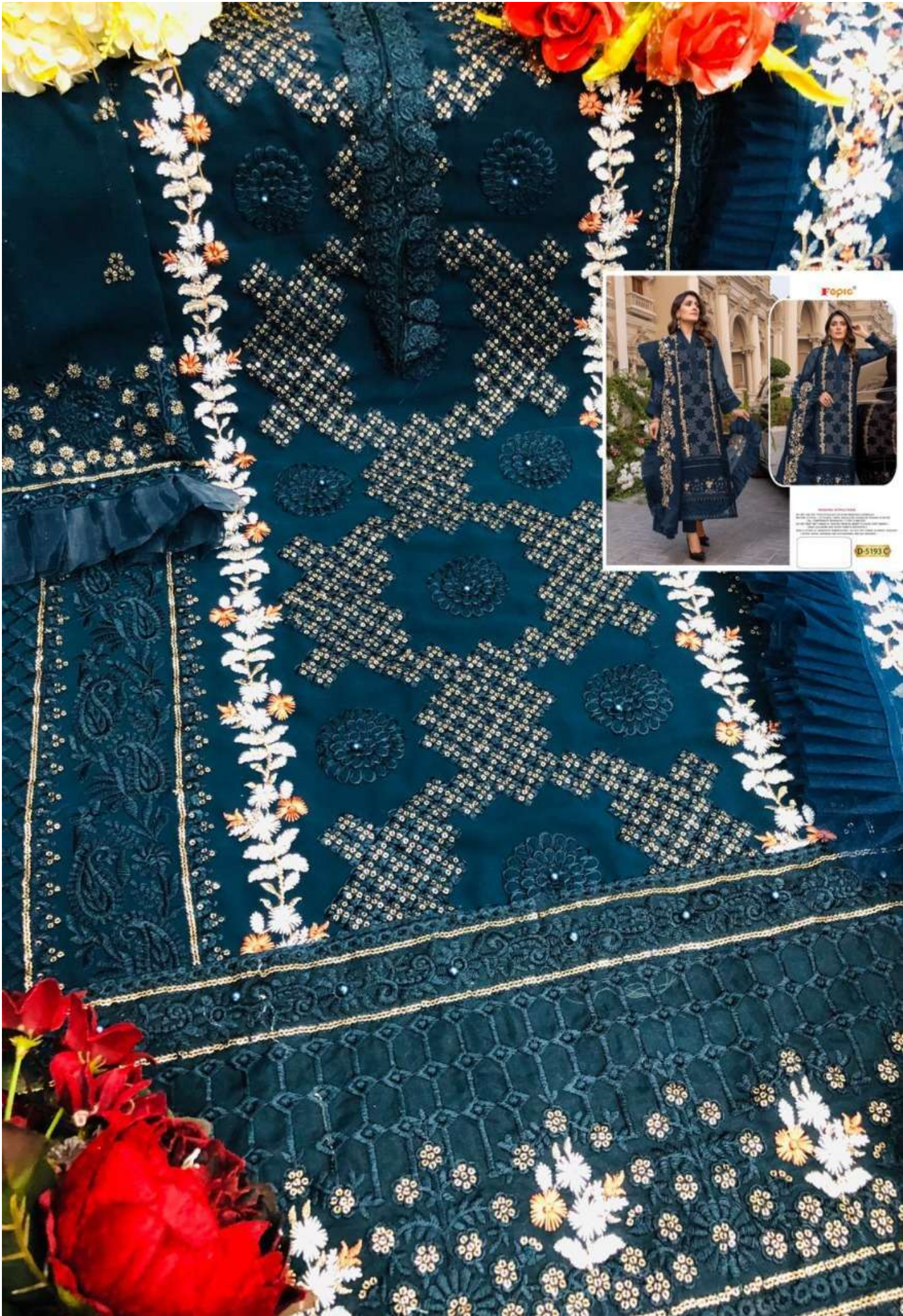


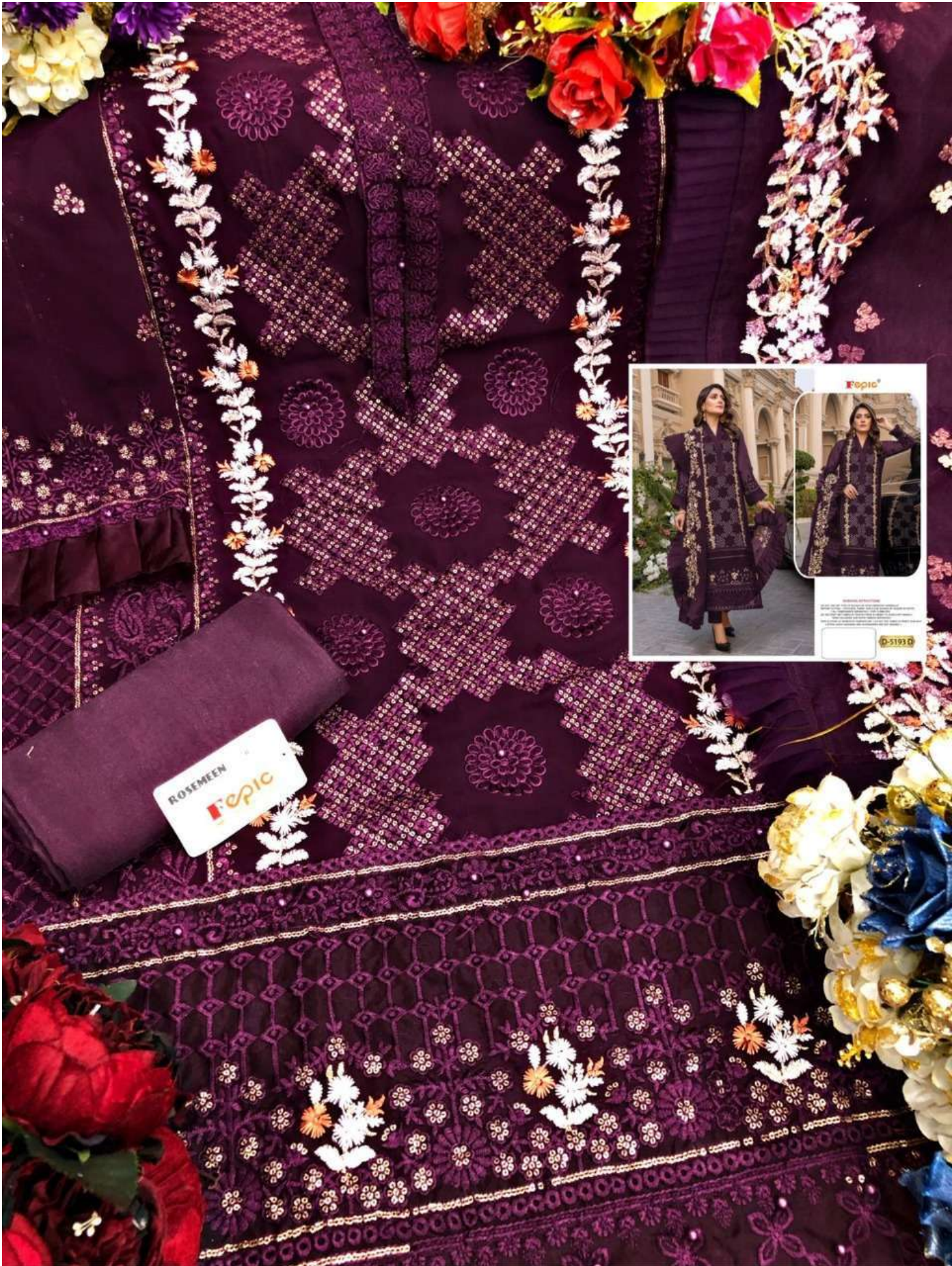
ROSEMEEN®  
Fepic®  
MADE IN PAKISTAN



**Fepic®**  
D-5193 B







ROSEEMEN  
Kopic





D-5193



D-5193 B



D-5193 C



D-5193 D



**Fepic**

: \_Fepic

: Fb.com/Fepic11

Fepic®



WASHING INTRUCTIONS

DO NOT USE ANY TYPE OF BLEACH OR STAIN REMOVING CHEMICALS  
BEFORE CUTTING / STITCHING. FABRIC SHOULD BE SOAKED IN WATER  
( ALL COMPONENTS SEPARATELY ) FOR 15 MINUTES

DO NOT KEEP WET FABRIC IN TWISTED FROM IN ORDER TO AVOID COPY MARKS |  
WASH COLOURED AND WHITE FABRICS SEPARATELY

IRON CLOTHES AT MODERATE TEMPERATURE | DO NOT DRY FABRIC IN DIRECT SUNLIGHT  
( EXTRA LACES, HANGINGS AND ACCESSORIES ARE NOT INDUDED )

D-5193

**Fepic**<sup>®</sup>



**WASHING INSTRUCTIONS**

DO NOT USE ANY TYPE OF BLEACH OR STAIN REMOVING CHEMICALS  
BEFORE CUTTING / STITCHING. FABRIC SHOULD BE SOAKED IN WATER  
( ALL COMPONENTS SEPARATELY ) FOR 15 MINUTES

DO NOT KEEP WET FABRIC IN TWISTED FORM IN ORDER TO AVOID COPY MARKS |  
WASH COLOURED AND WHITE FABRICS SEPARATELY

IRON CLOTHES AT MODERATE TEMPERATURE | DO NOT DRY FABRIC IN DIRECT SUNLIGHT  
( EXTRA LACES, HANGINGS AND ACCESSORIES ARE NOT INCLUDED )



**D-5193 C**



**Fepic**<sup>®</sup>



**WASHING INTRUCTIONS**

DO NOT USE ANY TYPE OF BLEACH OR STAIN REMOVING CHEMICALS  
BEFORE CUTTING / STITCHING. FABRIC SHOULD BE SOAKED BE SOAKED IN WATER  
( ALL COMPONENTS SEPARATELY ) FOR 15 MINUTES  
DO NOT KEEP WET FABRIC IN TWISTED FROM IN ORDER TO AVOID COPY MARKS |  
WASH COLOURED AND WHITE FABRICS SEPARATELY  
IRON CLOTHES AT MODERATE TEMPERATURE | DO NOT DRY FABRIC IN DIRECT SUNLIGHT  
( EXTRA LACES, HANGINGS AND ACCESSORIES ARE NOT INDUDED )



**D-5193 D**

**Fepic**<sup>®</sup>



**WASHING INTRUCTIONS**

DO NOT USE ANY TYPE OF BLEACH OR STAIN REMOVING CHEMICALS  
BEFORE CUTTING / STITCHING. FABRIC SHOULD BE SOAKED IN WATER  
( ALL COMPONENTS SEPARATELY ) FOR 15 MINUTES  
DO NOT KEEP WET FABRIC IN TWISTED FROM IN ORDER TO AVOID COPY MARKS |  
WASH COLOURED AND WHITE FABRICS SEPARATELY  
IRON CLOTHES AT MODERATE TEMPERATURE | DO NOT DRY FABRIC IN DIRECT SUNLIGHT  
( EXTRA LACES, HANGINGS AND ACCESSORIES ARE NOT INDUDED )



**D-5193 B**