

ENGAGEMENT

READY TO WEAR


ALIZEH
BOLD & BEAUTIFUL



ENGAGEMENT

READY TO WEAR

ALIZEH
BOLD & BEAUTIFUL



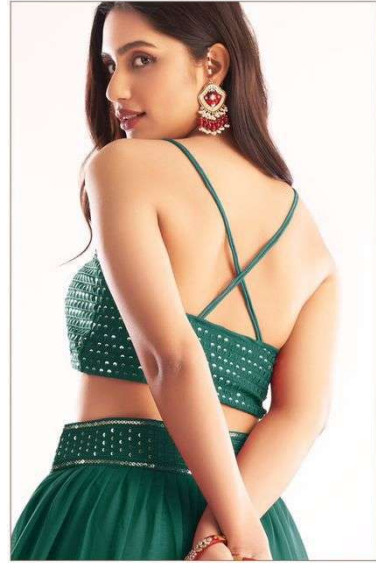


1060 A





ALIZEH
LONDON



1060 A

ALIZEH



1060 B





ALIZEH
LAKHMEER



1060 C





1060 D



ALIZEH



ALIZEE
1060 D





ALIZEH
DESIGNER



EMPHASIS IS MADE AND INTERESTING IS NOT. WE'VE A STREET AND JOHN & LEE. WE'VE
COMEDY AND MUSIC. WE'VE A BUNCH OF PEOPLE WHO ARE TRYING TO MAKE IT HAPPEN.

1060 E



ALIZEH



1060 E

ALIZEH
BOLD & BEAUTIFUL



1060 A



1060 B



1060 C



1060 D



1060 E



ALIZEH
BOLD & BEAUTIFUL



ALIZEH READYMADE LEHENGA SIZE GUIDE

SIZE GUIDE

SIZE	BUST	WAIST	HIPS
L	40"	36"	44"
XL	42"	38"	46"

*2 INCHES MARGIN PROVIDED IN BLOUSE

*ALL SIZES IN INCHES

DESCRIPTION:

FABRIC DESCRIPTION:

LEHENGA & CHOLI FABRIC- PURE GEORGETTE WITH DULL SANTOON INNER

DUPATTA FABRIC - NET

SIZE DESCRIPTION:

CHOLI LENGTH- 16 INCHES

CHOLI WITH PAD- YES

ZIPPER- SIDE ZIPPER PROVIDED

SLEEVES- YES, FABRIC PROVIDED 0.60 MTRS

LEHENGA LENGTH- 44 INCHES

LEHENGA FLAIR- 20 MTRS WITH GATHERING PATTERN

LEHENGA WITH CANCAN & CANVAS- YES

DUPATTA LENGTH-2.30 MTRS

DUPATTA WIDTH- 1 MTRS