





















# guldasta vol-11

bhkala



Design NO. (SKU)	Main Color	Lehenga Fabric	Choli Fabric	Dupatta Fabric	Belt	Lehenga Work	Choli Work	Dupatta Work
1911	White	Silk	Silk	NET	Available	Thread With Sequince Embroidered Work	Thread With Sequince Embroidered Work	Thread With Sequince Embroidered Work
1912	Pink	Silk	Silk	NET	Available	Thread With Sequince Embroidered Work	Thread With Sequince Embroidered Work	Thread With Sequince Embroidered Work
1913	Pista Green	Silk	Silk	NET	Available	Thread With Sequince Embroidered Work	Thread With Sequince Embroidered Work	Thread With Sequince Embroidered Work
1914	White – Red	Art Silk	Art Silk	NET	NA	Thread With Sequince Embroidered Work	Thread With Sequince Embroidered Work	Thread With Sequince Embroidered Work
1915	Mustard Yellow – Rani Pink - Gajari Pink	Art Silk	Art Silk	NET	NA	Thread With Sequince Embroidered Work	Thread With Sequince Embroidered Work	Thread With Sequince Embroidered Work
1916	Pink	Art Silk	Art Silk	Silk	NA	Thread With Sequince Embroidered Work	Thread With Sequince Embroidered Work	Thread With Sequince Embroidered Work
1917	Green - Orange	Art Silk	Art Silk	Silk	NA	Thread With Sequince Embroidered Work	Thread With Sequince Embroidered Work	Thread With Sequince Embroidered Work

<b>Size (Semi Stitched) (All Product)</b>	<b>UPTO 42 BUST AND WAIST</b>
<b>Choli Length (All Product)</b>	<b>1 MTR</b>
<b>Lehenga Length (All Product)</b>	<b>42 INCH.</b>
<b>Dupatta Length (All Product)</b>	<b>2.30 MTR (Approx)</b>
<b>Weight (All Product)</b>	<b>2.50 KG</b>

THIS BOOK / CATALOGUE / LOGO / ARE PROTECTED UNDER COPYRIGHT ACT. AN ILLEGAL/UNAUTHORIZED REPRINT, PUBLISHING, REPRODUCTION, DISTRIBUTION AND MODIFICATION OF ANY IMAGES, PHOTOGRAPHS AND PRODUCTS, TOTALLY OR IN PART, FOR ANY PURPOSE, REASON OR CAUSE IS STRICTLY PROHIBITED AND PUNISHABLE UNDER LAW.





1911



1912



1913



1914



1915



1916



1917



1917





शुभकला bhkala



1915





शुभकला



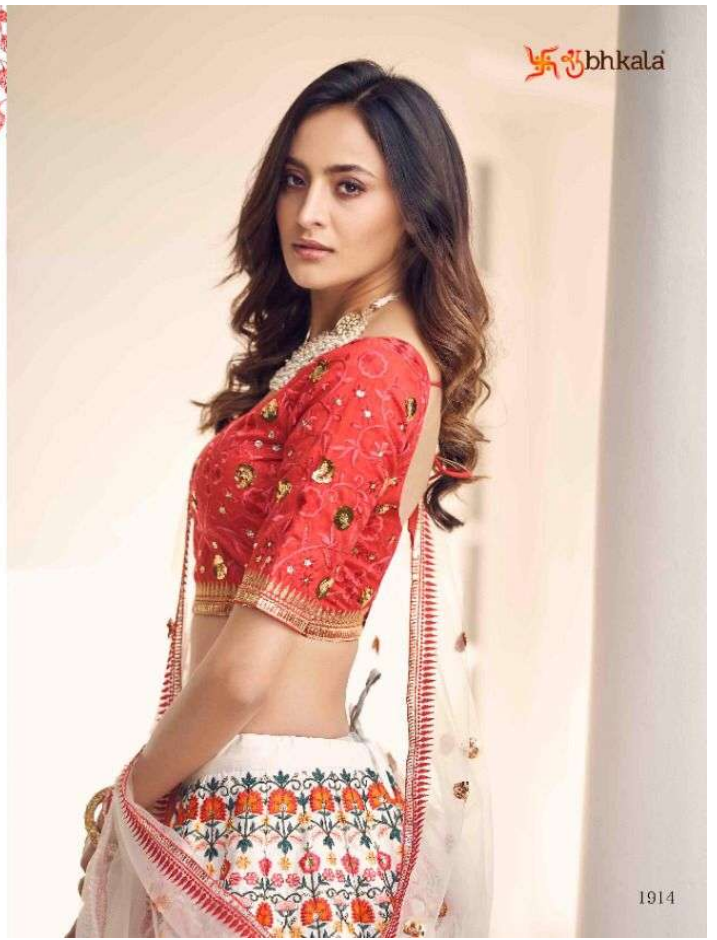
1915





1914







शुभकला

1913





शुभकला bhkala



1917





1913



bhkala





शुभकला



1911

