

Mehmood Tex  
Clothing Textile



### Fabrics Details

TOP: GEORGETTE WITH EMBROIDERY

BOTTOM: SANTOON

DUPATTA: NAZMIN WITH FRILL

### Care Instructions



WASH IN WASH DO NOT BLEACH MEDIUM IRON LINE DRY

> Dry clean recommended

> Do not use any type of bleach or stain removing chemicals.

> Do not overexpose damp fabrics to strong sunlight.

> Iron at moderate temperature.

# M-04

Mehmood Tex  
Clothing Textile



### Fabrics Details

TOP: GEORGETTE WITH EMBROIDERY

BOTTOM: SANTOON

DUPATTA: NAZMIN WITH FRILL

### Care Instructions



WASH IN WASH DO NOT BLEACH MEDIUM IRON LINE DRY

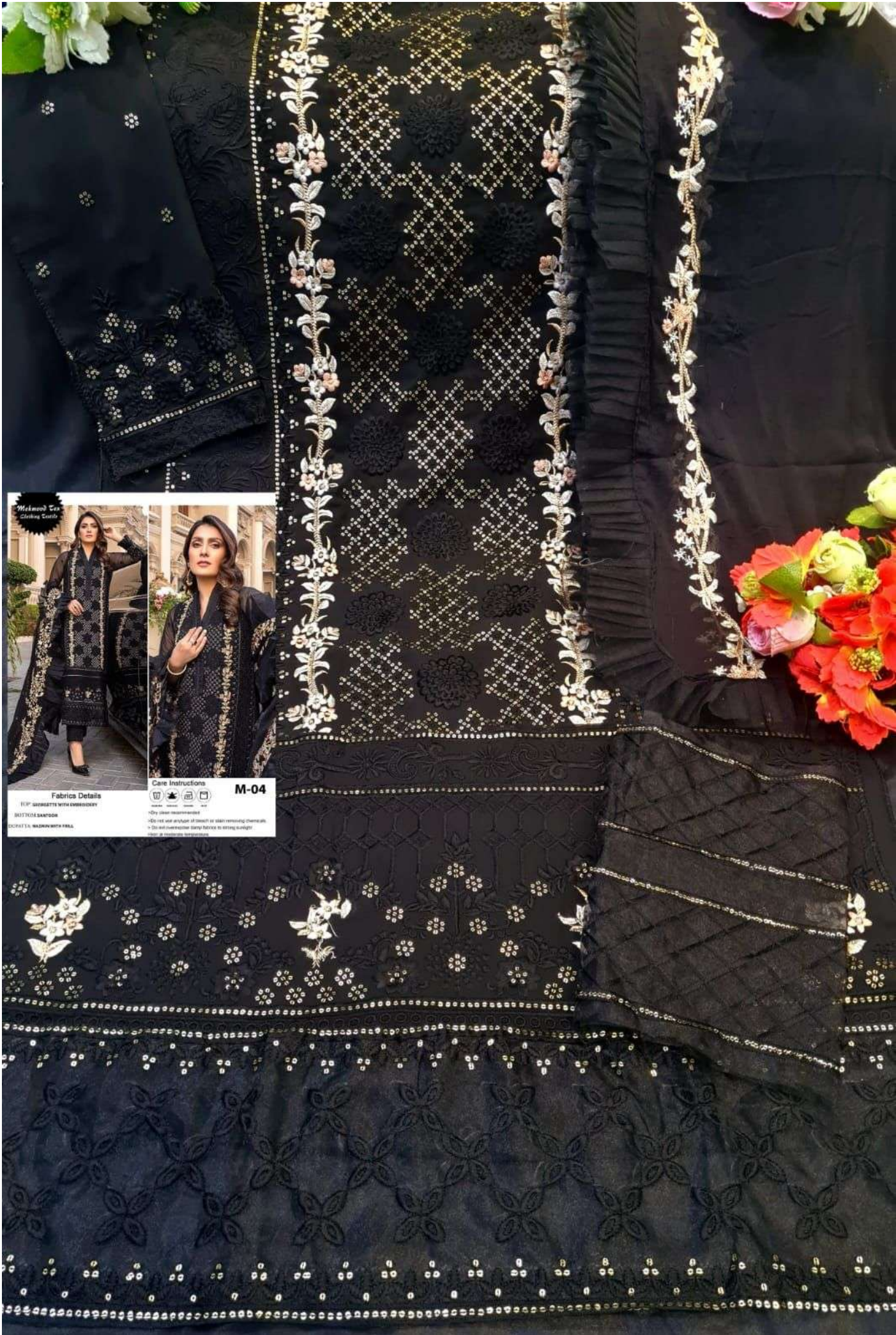
> Dry clean recommended

> Do not use any type of bleach or stain removing chemicals.

> Do not overexpose damp fabrics to strong sunlight.

> Iron at moderate temperature.

# M-04



Midwest Text  
Clothing Centre



**Fabric Details**  
100% SILK/NETT WITH EMBROIDERY  
MATERIAL: SARKI/DOOR  
COLOR: BLACK WITH GOLD

**Care Instructions**  
Washable  
Dry Clean  
Iron  
Hand Wash

**M-04**

\*Dry clean recommended  
\*Do not use any kind of bleach or stain removing chemicals  
\*Do not over-expose fabric to strong sunlight  
\*Do not use ironing board