



BREEZE

By

nakkashi[®]
ETHNIC PERFECTION AT ITS FINEST



BREEZE

By

nakkashi[®]
ETHNIC PERFECTION AT ITS FINEST



REIMAGINING FASHION #3087



nakkashi

Every collection is a journey of imagination, sparked by a wonderful piece of fabric, a fine detail or a substantial idea.



nakkashi

STARTLING
PANACHE

#3087

A burst of fresh air comes alive in the form of this
amber ensemble, which gives perfectly playful vibe with
the new season.

nakkashi
DESIGN. PRODUCTION. ARTISTRY.



Startling Panache

A burst of fresh air comes alive in the form of this amber ensemble, which gives perfectly playful vibe with the new season.

#3087



YELLOW MOOAL
SATIN GOWN
WITH MIRROR
WORK EMBROIDERY
ON IT. PAIRED WITH
YELLOW CHIFFON DUPATTA



nakkashi[®]
LUXURY FASHION DESIGNERS

*Embellished with floral embroidery,
the exquisite mint green gets a makeover for the new vision of party wear.*

TIMELESS ELEGANCE #30SS



Timeless Elegance

nakkashi
CLASSIC FASHION FOR THE MODERN WOMAN

Photography: @Rishi_Studio, Mumbai. The complete range from Nakkashi is available for the month of July 2020.

PASTEL GREEN MODAL
SATIN GOWN WITH DELICATE
RESHAM WORK ON IT
PAIRED WITH PASTEL
GREEN CHIFFON DUPATTA

#30SS

nakkashi
FABRIC PERFECTION MEETS FASHION



REFLECTING YOU #30S9

Feel like you've stepped straight out a regal empire; and your dream of looking like a princess is just accomplished!



And like you're stepping straight out a royal empire with your dream of looking like a princess is just accomplished!

nakkaashi
DESIGN. PRODUCE. BE INSPIRED.

REFLECTING YOU



CHAMPAGNE COLOUR
MODAL SATIN
BLOUSE WITH
ZARI EMBROIDERY
ON IT PAIRED WITH
CHAMPAGNE COLOUR
GHEFFON DUPATTA

#3089



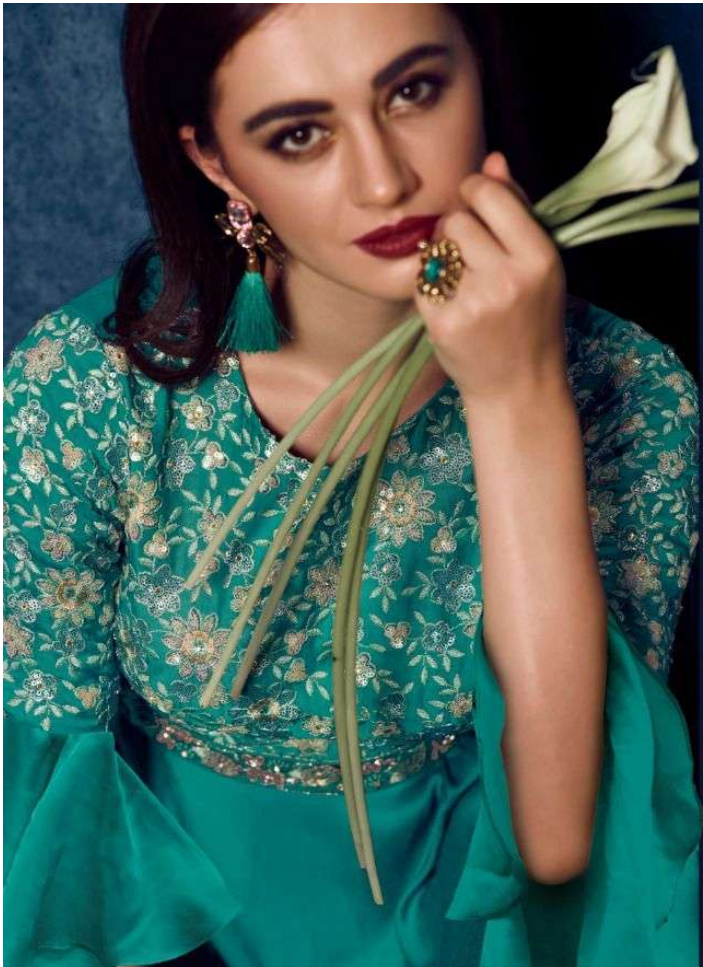
nakkashi
TRADITIONAL PRODUCTION OF PUNJAB



SIGNATURE EPISODE #3090

Flowing fabrics, fuss-free styling, and timeless elegance are our signature style and present in every garment handcrafted under Nakkashi.





SIGNATURE EPISODE

Flawless fabric, jaw-dropping styling, and timeless elegance are our signature style and present in every garment handcrafted under Nakkaashi.

nakkashi
FINDING PERFECTION IN EVERY THREAD



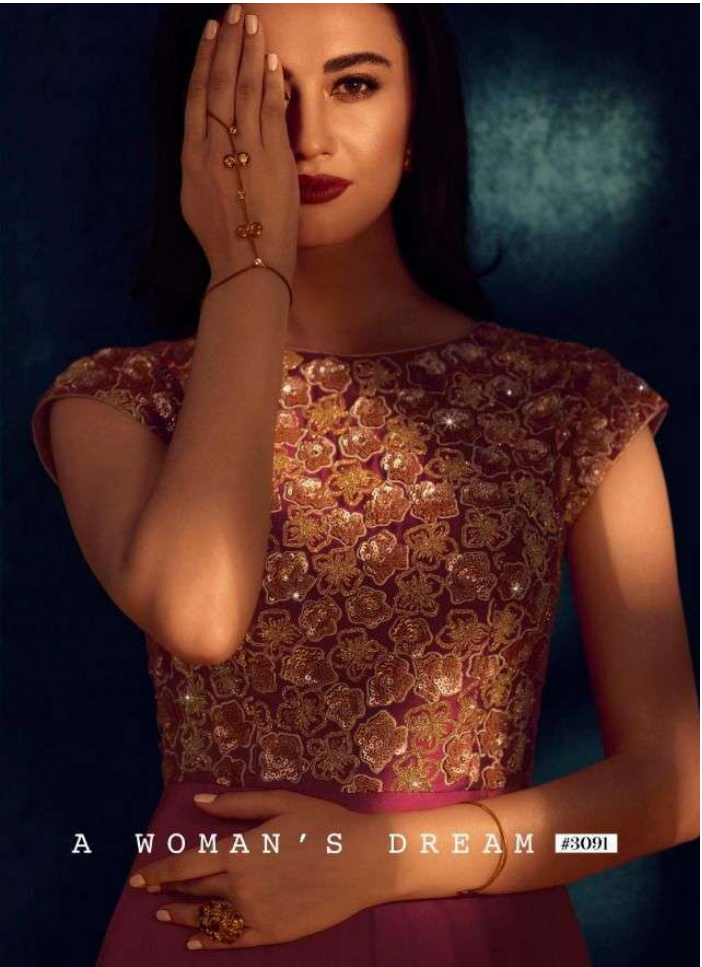
#3090

STRONG ARCTIC
BLUE COLOUR
MODAL SATIN
GOWN WITH
SEQUIN WORK
ON IT PAIRED
WITH MATCHING
CHIFFON DUPATTA



nakkashi
FASHION. FURNITURE. HOME. ARTS. 1988-2002

Whether you are a bride-to-be or a fashionista with a mind to break,
this is one collection that will catch your fancy and stay in your 20th Anniversary collection.



A WOMAN'S DREAM #3091

With beauty in a wonderful garment, nothing, cannot be done but to bring the drama to dream.

nakkashi
ETHEREAL PRODUCTIONS BY PUNJABI

CRIMSON TIDE



#3091

nakkashi
ESTABLISHED 1988

© 2018 Nakkaashi. All rights reserved. For more information, visit us at www.nakkashi.com

CRIMSON TIE

#3091

FESTIVE RED COLOUR
MODAL SATIN GOWN HAVING
LEATHER SOULI WORK
ON IT PAIRED WITH
MATCHING CHIFFON BLOUSE



nakkashi
L'ART DE LA BIJOUX

*All your glittering gold in silver palette is all a lavish feel with your attire.
In a shimmer with confident stride!*



GLITTERING FLAIR #3092



Add some glittering gold in olive palette to add a little fest with your attire. Be a fashion walk confident model!

nakkashi
FABRIC PRODUCTIONS BY PUNJAB

GLITTERING FURIA

BOTTLE GREEN MODAL
SATIN GOWN WITH SEQUIN
TEXTURED YOKE AND
RESHAM WORK KALIS
PAIRED WITH MATCHING DUPATTA

#3092



nakkashi
ETERNAL PERFECTION IN EVERY

*Thinly stretched, natural chiks are a whiff of pure bliss. All in all,
just the perfect ensemble for the woman who finds value in extravagance.*

NEUTRAL TERRITORY #3093



nakkashi
FROM TRADITION TO MODERN

ETHEREAL ALLURE #3093

*Make an unforgettable impression with Nakkashi's sheer elegance, subtle hues and confident statement.
Every perfectly crafted piece strikes the delicate balance between contemporary style and classic charm.*



#3087



#3088



#3091



#3092



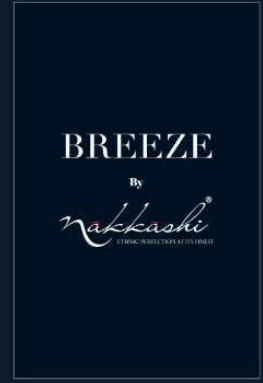
#3089



#3090



#3093



BREEZE

By

nakkashi

LITMUS, BREATHERS & FLOWERS

