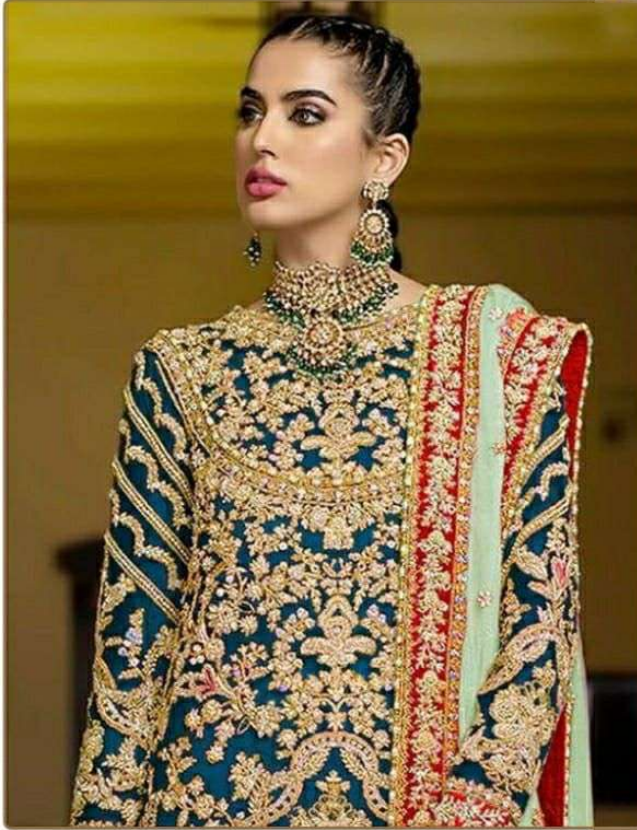




#R-487-B



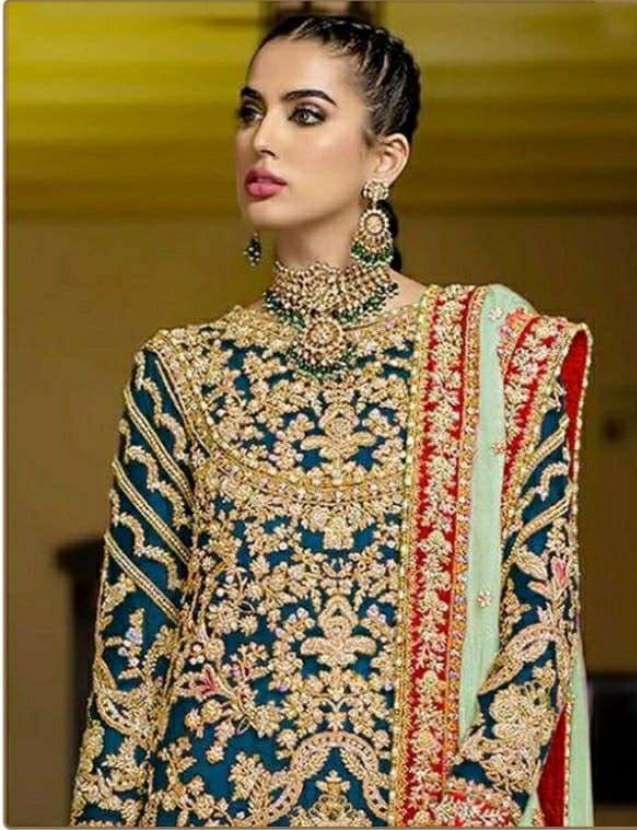
TOP-NET WITH HEAVY EMBROIDERY  
BOTTOM- DULL SANTOON  
DUPATTA - NET WITH HEAVY EMBROIDERY

Ⓟ DRY CLEAN ONLY.  
ⓧ DO NOT USE ANY BLEACH OR STAIN REMOVING CHEMICAL.  
Ⓡ IRON THE FABRIC AT MODERATE TEMPERATURE.





#R-487-B



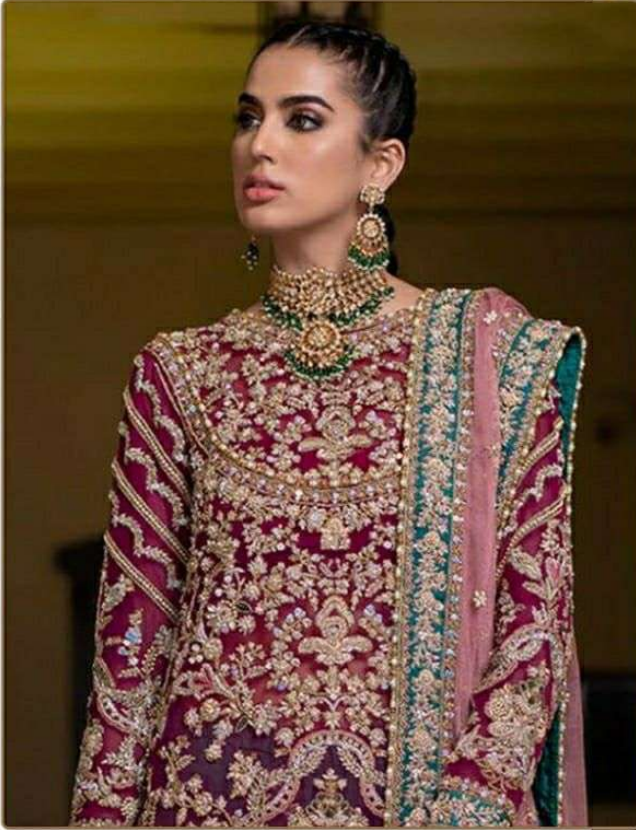
TOP-NET WITH HEAVY EMBROIDERY  
BOTTOM- DULL SANTOON  
DUPATTA - NET WITH HEAVY EMBROIDERY

- Ⓟ DRY CLEAN ONLY.
- ✘ DO NOT USE ANY BLEACH OR STAIN REMOVING CHEMICAL.
- ☎ IRON THE FABRIC AT MODERATE TEMPERATURE.





#R-487-A



TOP-NET WITH HEAVY EMBROIDERY  
BOTTOM- DULL SANTOON  
DUPATTA - NET WITH HEAVY EMBROIDERY

- Ⓟ DRY CLEAN ONLY.
- ✘ DO NOT USE ANY BLEACH OR STAIN REMOVING CHEMICAL.
- ☎ IRON THE FABRIC AT MODERATE TEMPERATURE.





*Ramsha*  
#R-487-A



100% ACRYL WITH HEAVY EMBROIDERY  
KOTYERU, BULU, GARDON  
DUSTIYA - MISTRI WITH HEAVY EMBROIDERY

DO NOT WASH  
DO NOT USE ANY BLEACH OR STAIN REMOVING LIQUOR  
IRON THE FABRIC AT LOWEST TEMPERATURE

