



MRUDANG
THE ART OF ETHNIC CLOTHING

CHARMING
CHANGING * THE * WAY * WE * DESIGN

2011





MRUDANG
THE ART OF ETHNIC CLOTHING

CHARMING
CHANGING * THE * WAY * WE * DESIGN

2011





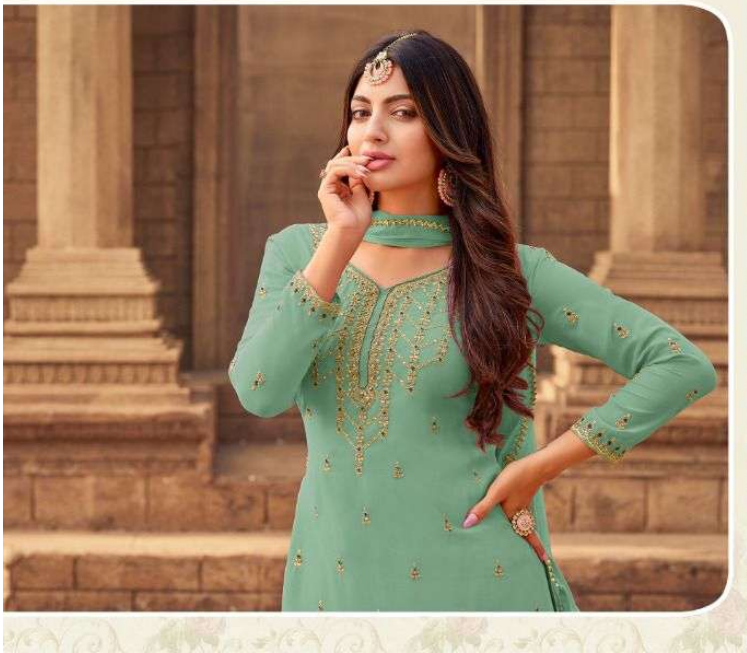
MRUDANGI
THE ART OF STYLISH CLOTHING

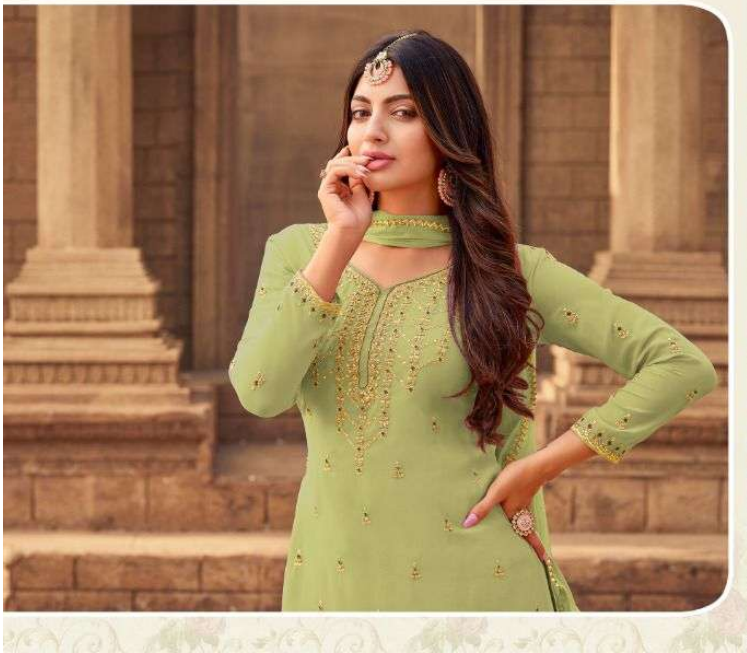
CHARMING

CHANGING * THE * WAY * WE * DESIGN

2011-C









Gulabo

COLOUR EDITION



2011-A



2011-B



2011-C



2011-D



2011-E



Gulabo

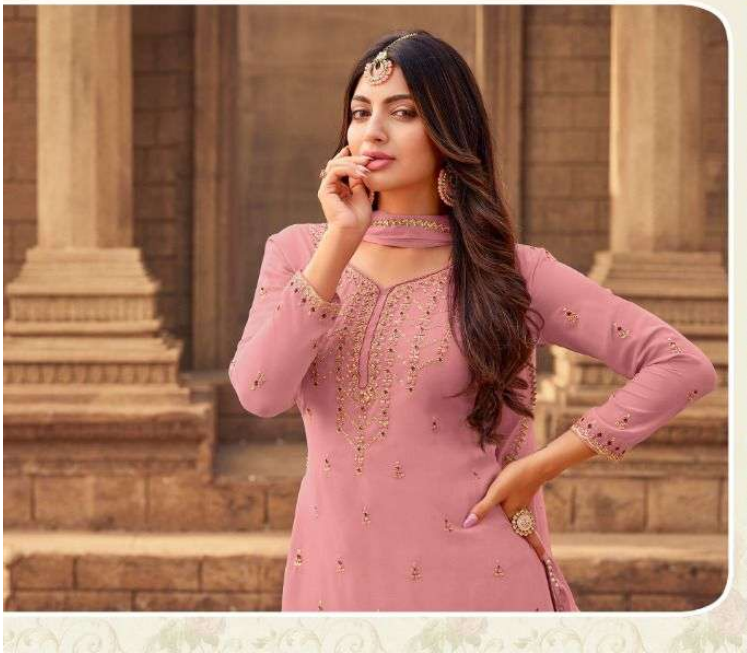
COLOUR EDITION

D.No:

FABRIC DETAIL

RATE

| D.No: | FABRIC DETAIL | RATE |
|--------|--|--------|
| 2011-A | Top - Heavy Faux Georgette with Embroidery Stitch work With Diamonds Stone Work With Santoon Inner Attached Inner - Santoon Bottom - Heavy Faux Georgette with Full Heavy Embroidery Work Santoon Dupatta - Heavy Naznin Dupatta With Swarovski Diamonds Work | 1995/- |
| 2011-B | Top - Heavy Faux Georgette with Embroidery Stitch work With Diamonds Stone Work With Santoon Inner Attached Inner - Santoon Bottom - Heavy Faux Georgette with Full Heavy Embroidery Work Santoon Dupatta - Heavy Naznin Dupatta With Swarovski Diamonds Work | 1995/- |
| 2011-C | Top - Heavy Faux Georgette with Embroidery Stitch work With Diamonds Stone Work With Santoon Inner Attached Inner - Santoon Bottom - Heavy Faux Georgette with Full Heavy Embroidery Work Santoon Dupatta - Heavy Naznin Dupatta With Swarovski Diamonds Work | 1995/- |
| 2011-D | Top - Heavy Faux Georgette with Embroidery Stitch work With Diamonds Stone Work With Santoon Inner Attached Inner - Santoon Bottom - Heavy Faux Georgette with Full Heavy Embroidery Work Santoon Dupatta - Heavy Naznin Dupatta With Swarovski Diamonds Work | 1995/- |
| 2011-E | Top - Heavy Faux Georgette with Embroidery Stitch work With Diamonds Stone Work With Santoon Inner Attached Inner - Santoon Bottom - Heavy Faux Georgette with Full Heavy Embroidery Work Santoon Dupatta - Heavy Naznin Dupatta With Swarovski Diamonds Work | 1995/- |





MRUDANGI-2011 B



MRUDANGI 2011 C





MRUDANGI-2011



MRUDANGI-2011 E



MRUDANGI-2011 D