

VINAY FASHION LLP
@vinay.f

THE STUNNER

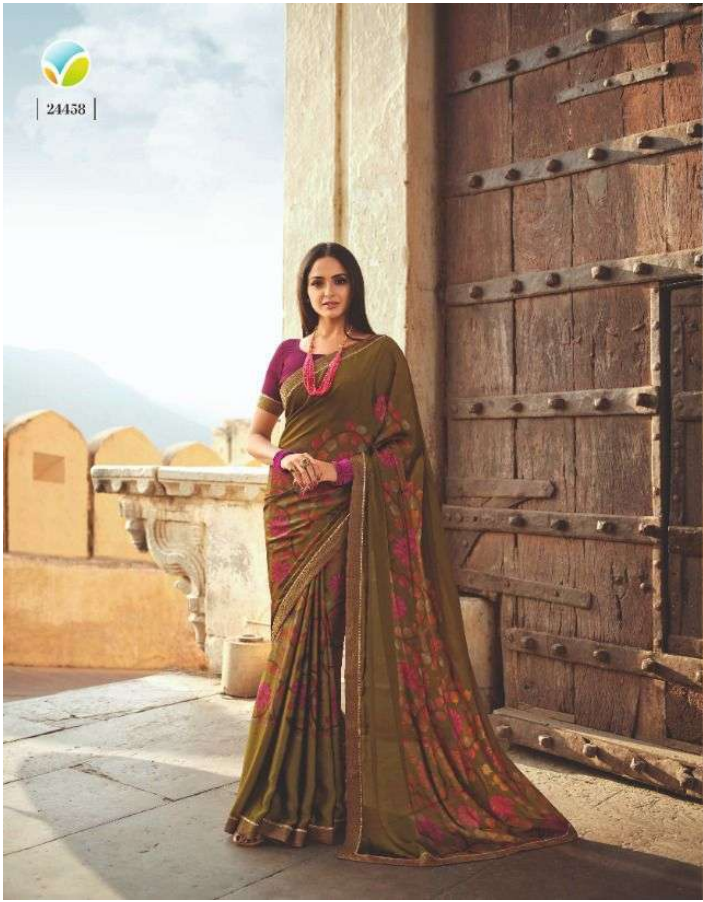
It is a beautiful and a perfect
experience to see how good the
quality of the work is. We can't think
of any other way to get from
the same old style to the new
production. The only way to
improve it is to work on it.







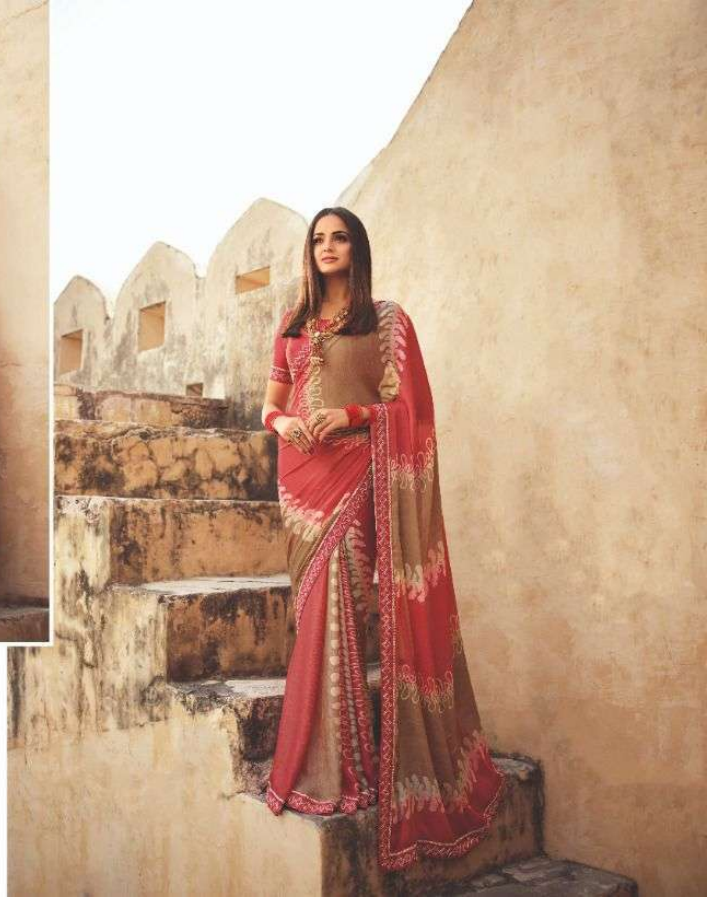
| 24438 |







| 24459 |






| 24461 |





24451



24452



24453



24457



24458



24459



24454



24455



24456



24460



24461

VINAY
 VINAY FASHION LLP
Sheesha
 A Brand by Vinay
 STARWALK-69
 A Product by Sheesha



THE ART

Designing all garments in velvet fabric, adorned with sheer fabrics, artistically designed floral patterns and contrast borders, our entire saree collection speaks in tune to the heavenly and elegant of this time, thereby personal.

| 21458 |







| 24453 |



THE MAGIC

Continuing trends, rising patterns, reminiscent of the vibrant and heritage of the country, both come together to form the patterns of grace and glamour. These are the art and classic patterns with uniquely spaced pop of colors, are best to speak some magic to your next one.

| 24456 |





| 24454 |

T H E B A L A N C E

Staking the right balance between
soft and dramatic, our next
collection offers choices promise to stop all
eyes on you the minute where you are
located. Since this collection
include Soft Future and adorable hues
that come with assistance in printed
floral motifs, making sure to set your
ethic style game this season.





THE HUES



24452

Charm makes everything better, don't you think? The hue we wear, even in simple tones, can speak with your favourite hues, and we strive to perfection. Something more, beautiful, made with our fabric, all we gather is a collection that is worth to cherish.



SHEESHA STARWALK-69

FABRIC DETAILS

SAREE
PRINTED SILK GEORGETTE
WITH EMB BORDER

BLOUSE
SILK BLOUSE WITH
EMB BORDER

HSN CODE-54075230

