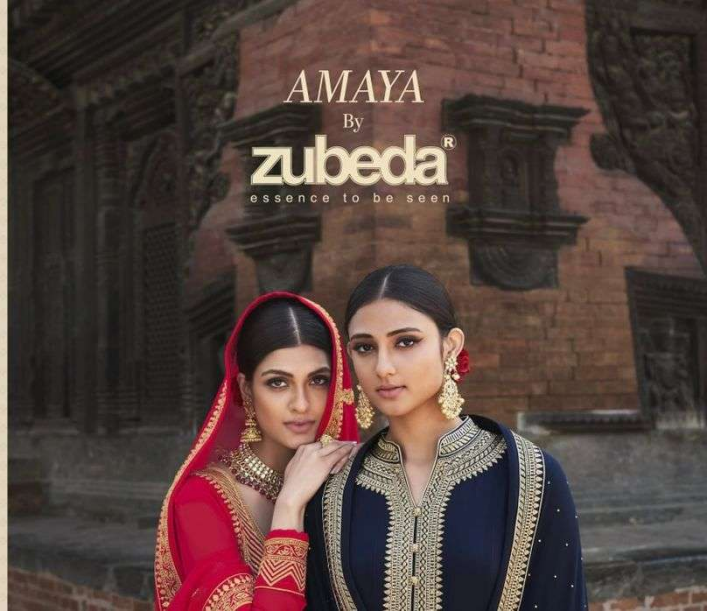


~ FABRIC DETAILS ~

Top - Georgette Heavy Embroidery Work
Dupatta - Georgette with Embroidery Work
Bottom - Heavy Dull Satoon

EDIT



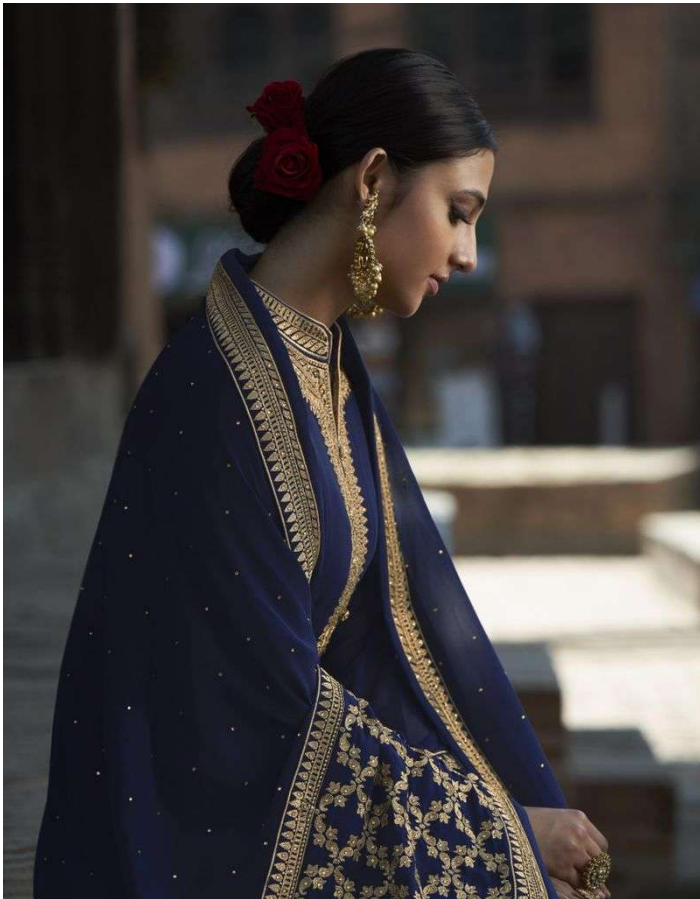


zubeda
BRANDS IN THE SKIN

A
The Amazement of Art
◆ 22304 ◆









zubeda
DESIGNED TO BE AWAY



The delicacy of Details
❖ 22302 ❖

A vertical panel with a light beige background featuring a subtle diamond pattern. At the top, the brand name 'zubeda' is written in a dark font, with the tagline 'DESIGNED TO BE AWAY' underneath. In the center, there is a close-up photograph of the woman's hands and the lower part of her purple dress, highlighting the intricate gold embroidery. At the bottom, a stylized 'B' logo is displayed above the text 'The delicacy of Details' and the product code '❖ 22302 ❖'.

AMAYA
by
zubeda
DESIGNED TO BE SEEN



✦ 22301 ✦



✦ 22302 ✦



✦ 22303 ✦



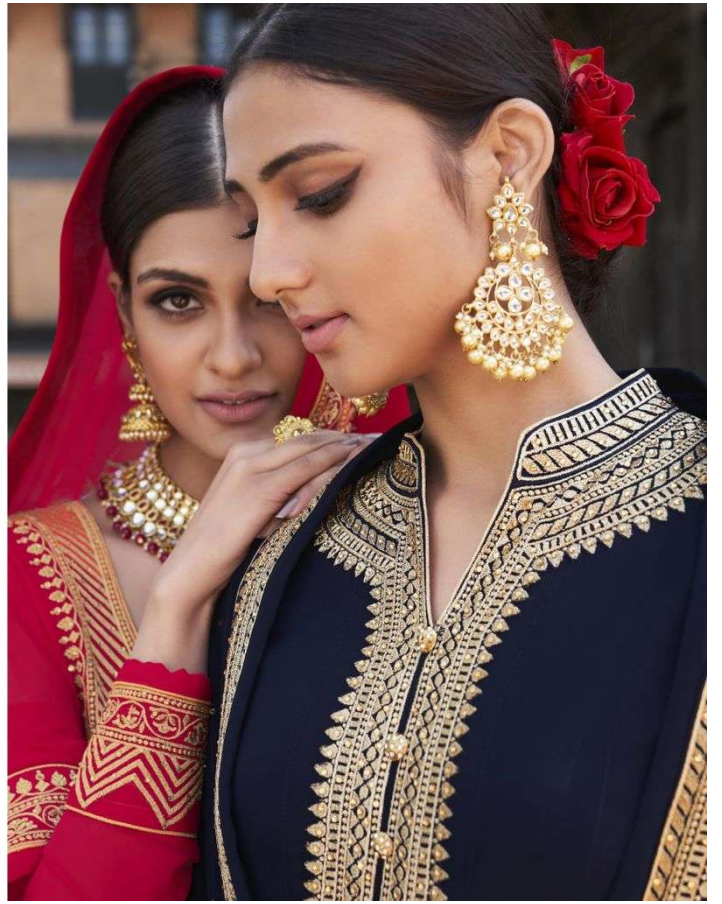
✦ 22304 ✦



✦ 22305 ✦



✦ 22306 ✦



zubeda
DESIGNER IN 2014



The Ecstasy of Velvet
❖ 22306 ❖





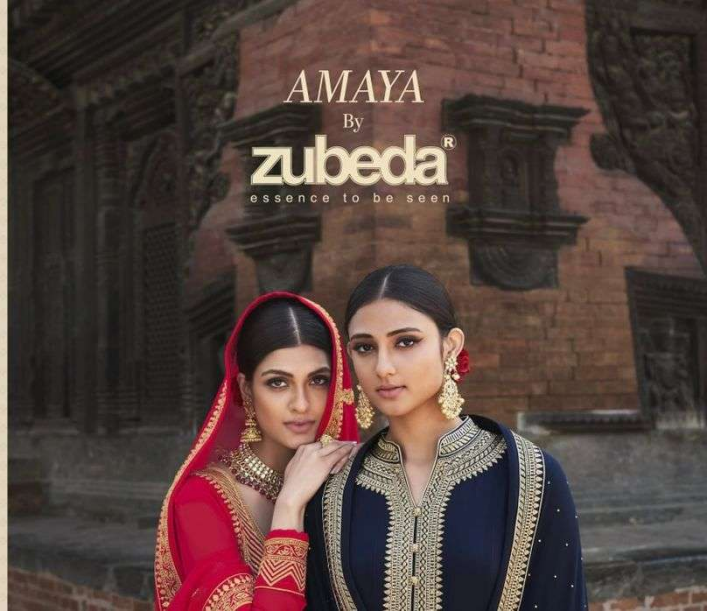
ES
The Grandeur of Grace
◆ 22305 ◆

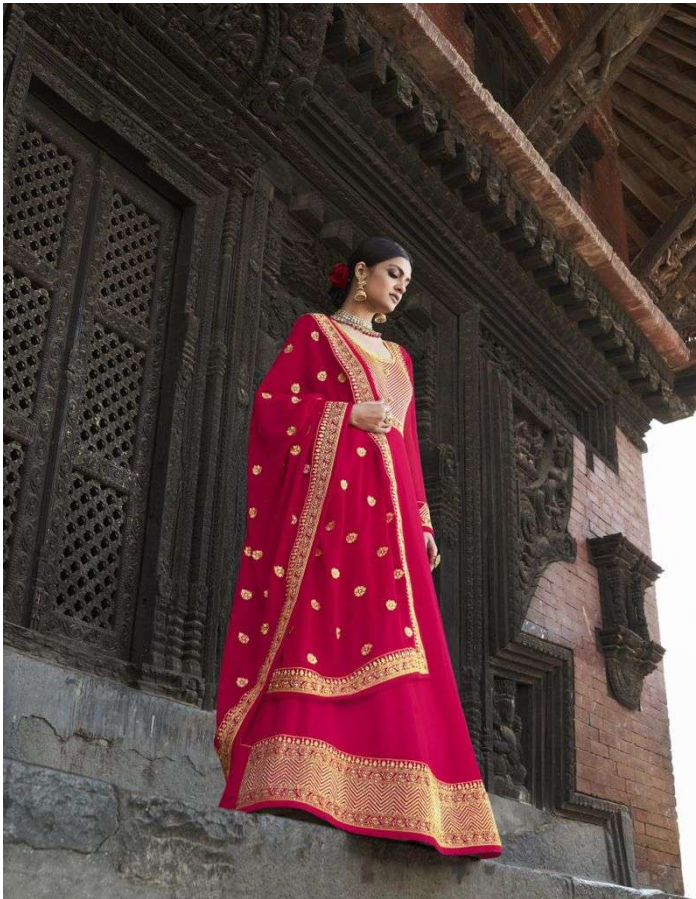


~ FABRIC DETAILS ~

Top - Georgette Heavy Embroidery Work
Dupatta - Georgette with Embroidery Work
Bottom - Heavy Dull Satoon

EDIT





zubeda
DESIGNER TO BE SEEN

A



The Amazement of Art

◆22304◆



zubeda
BRIDAL TO BE SEEN



M
The Magic of Opulence
+ 22301 +



zubeda



The Comfort of Craft

zubeda
DESIGNER TO GO BRAND



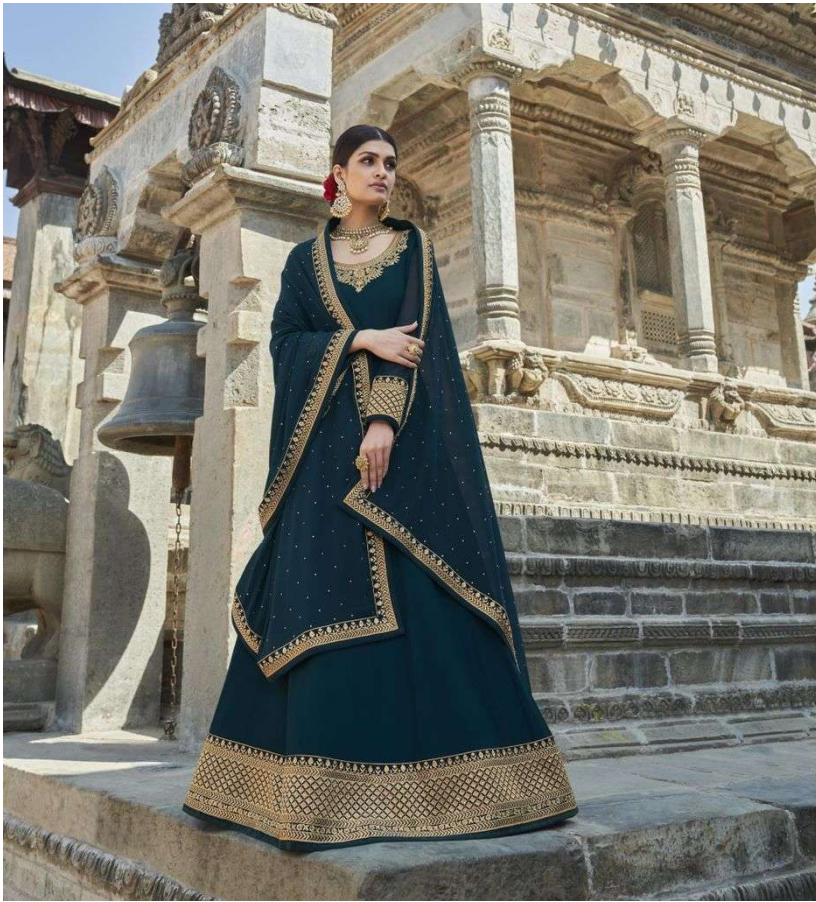
The delicacy of Details
❖ 22302 ❖



zubeda
DESIGNED IN INDIA



The splendor of Shades
❖ 22303 ❖



zubeda



The splendor of Shades

✦ 22303 ✦



AMAYA

RATE:-2195/-

TOP

Gorgette with Embroidery work

DUPATTA

Gorgette with Heavy Embroidery work

BOTTOM

Heavy Santoon

<u>Design No.</u>	<u>Product Name</u>	<u>Rate</u>
<u>22301 to 22306</u>	<u>AMAYA</u>	<u>2195 /-</u>
<u>Total Suits</u>	<u>Total Amount</u>	<u>Average</u>
<u>06</u>	<u>13170/-</u>	<u>2195/-</u>

ROSHNI INTERNATIONAL

