



#R-439

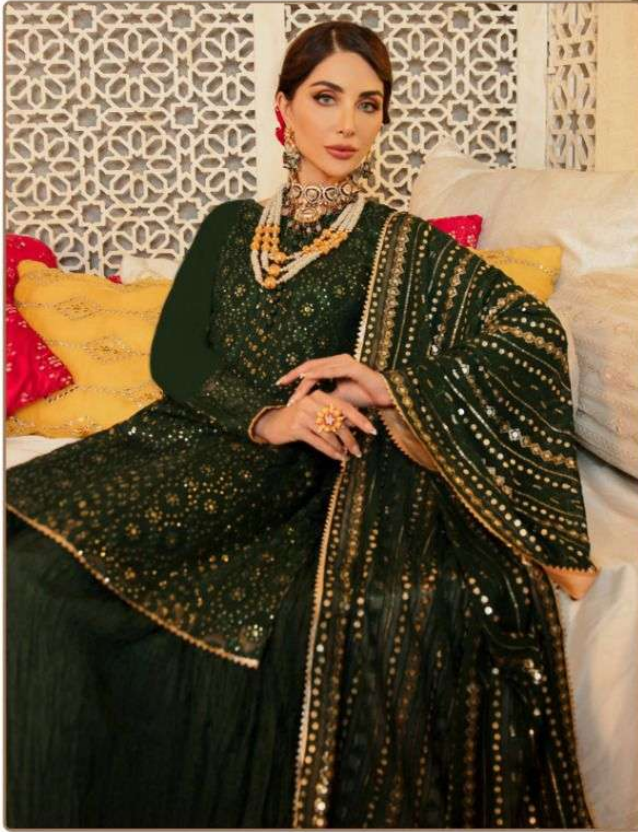


TOP- FOX GEORGET WITH HEAVY EMBROIDERY  
BOTTOM- DULL SANTOON  
DUPATTA - GEORGET WITH HEAVY EMBROIDERY

Ⓟ DRY CLEAN ONLY.  
ⓧ DO NOT USE ANY BLEACH OR STAIN REMOVING CHEMICAL.  
Ⓜ IRON THE FABRIC AT MODERATE TEMPERATURE.



#R-437



TOP- FOX GEORGET WITH HEAVY EMBROIDERY  
BOTTOM- DULL SANTOON  
DUPATTA - GEORGET WITH HEAVY EMBROIDERY

Ⓟ DRY CLEAN ONLY.  
ⓧ DO NOT USE ANY BLEACH OR STAIN REMOVING CHEMICAL.  
☎ IRON THE FABRIC AT MODERATE TEMPERATURE.



#R-439



TOP- FOX GEORGET WITH HEAVY EMBROIDERY  
BOTTOM- DULL SANTOON  
DUPATTA - GEORGET WITH HEAVY EMBROIDERY

Ⓟ DRY CLEAN ONLY.  
ⓧ DO NOT USE ANY BLEACH OR STAIN REMOVING CHEMICAL.  
Ⓡ IRON THE FABRIC AT MODERATE TEMPERATURE.

Ramsha®



#R-437



#R-438

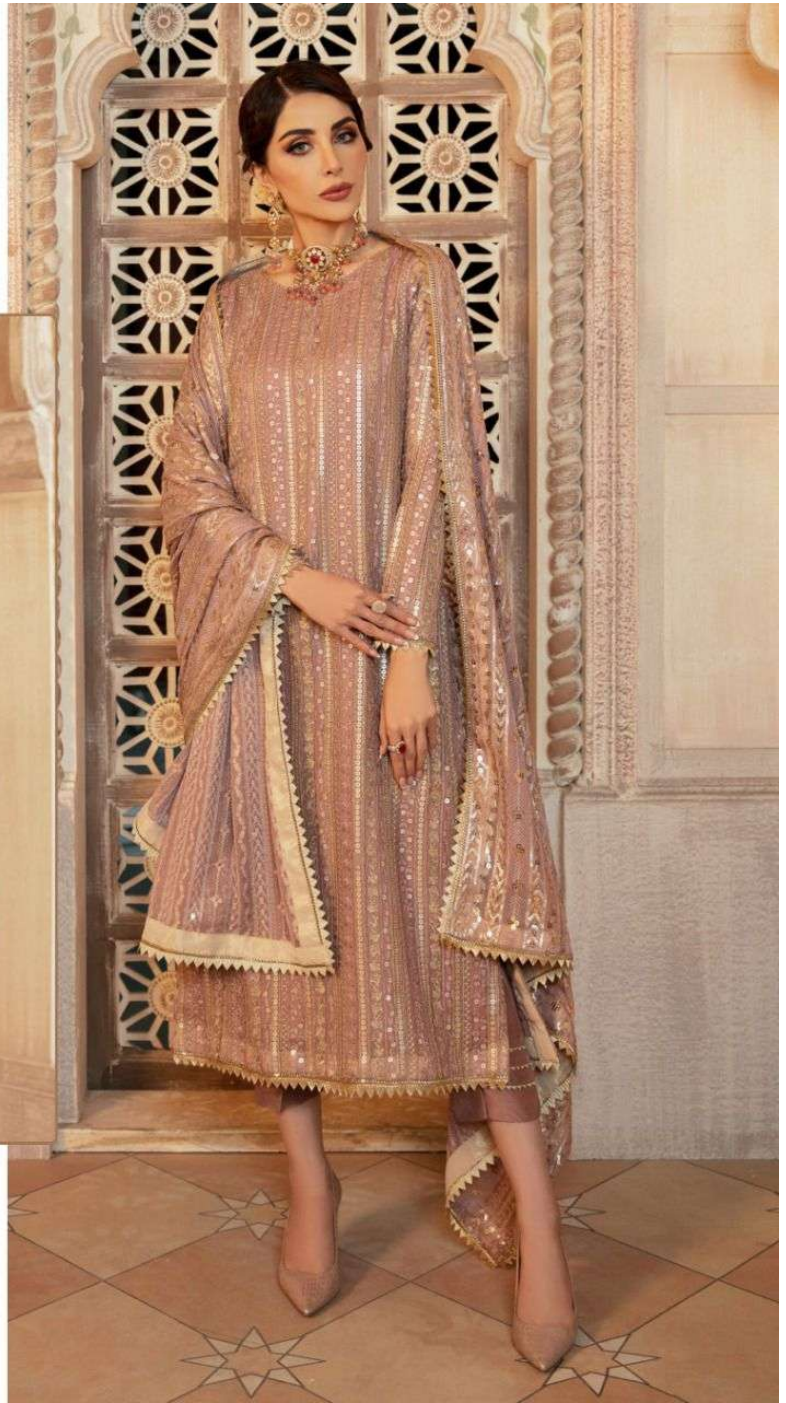


#R-439

Ramsha®

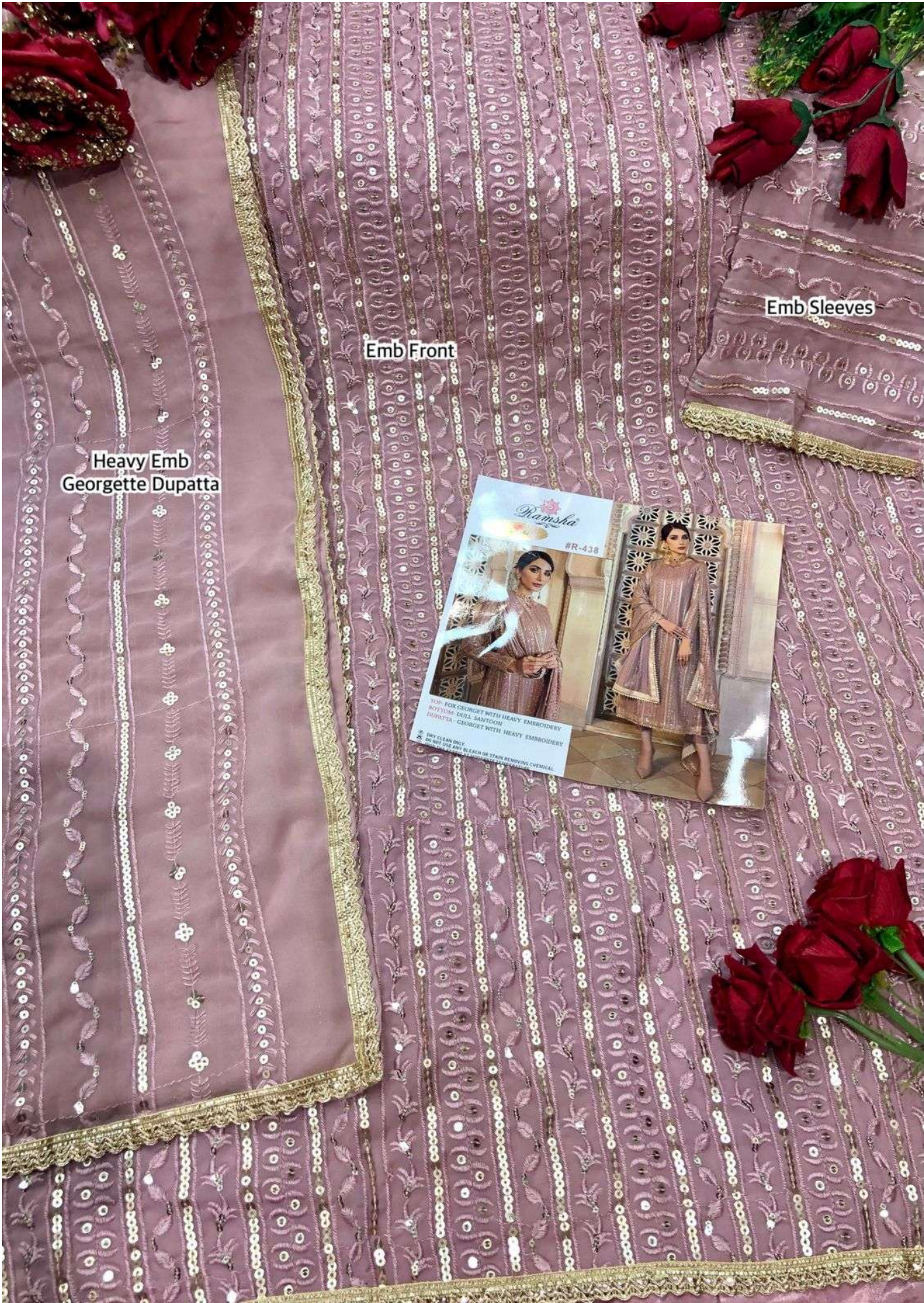


#R-438



TOP- FOX GEORGET WITH HEAVY EMBROIDERY  
BOTTOM- DULL SANTOON  
DUPATTA - GEORGET WITH HEAVY EMBROIDERY

Ⓟ DRY CLEAN ONLY.  
ⓧ DO NOT USE ANY BLEACH OR STAIN REMOVING CHEMICAL.  
Ⓛ IRON THE FABRIC AT MODERATE TEMPERATURE.



Heavy Emb  
Georgette Dupatta

Emb Front

Emb Sleeves



TOP - FOR GEORGETTE WITH HEAVY EMBROIDERY  
BOTTOM - DRIE - BAN TONG  
DUPATTA - GEORGETTE WITH HEAVY EMBROIDERY  
DRY CLEAN ONLY  
DO NOT USE ANY BLEACH OR STAIN REMOVING CHEMICAL



Heavy Emb  
Georgette Dupatta

Emb Front

Emb Sleeves





Emb Sleeves

Emb Front

Heavy Emb  
Georgette Dupatta

