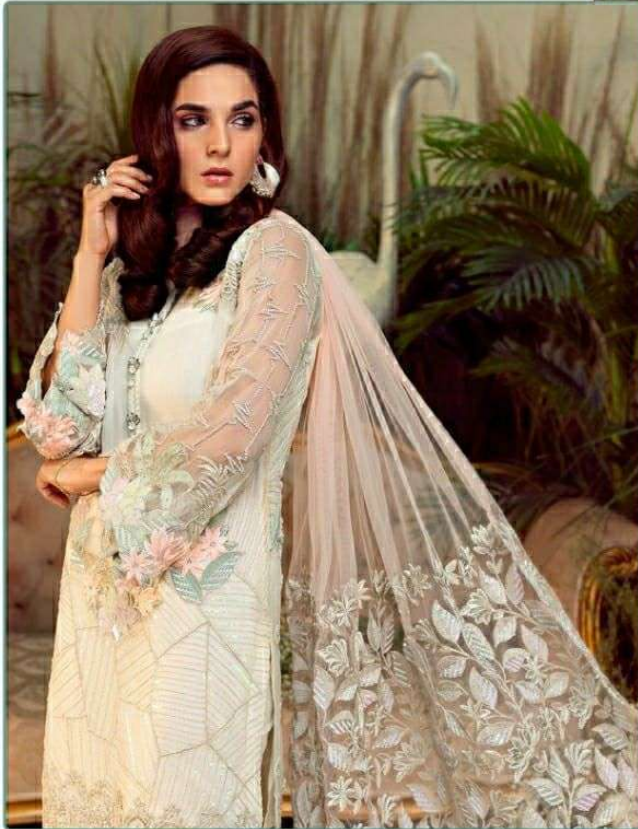




#R-191-A



TOP- GEORGET WITH HEAVY EMBROIDERY

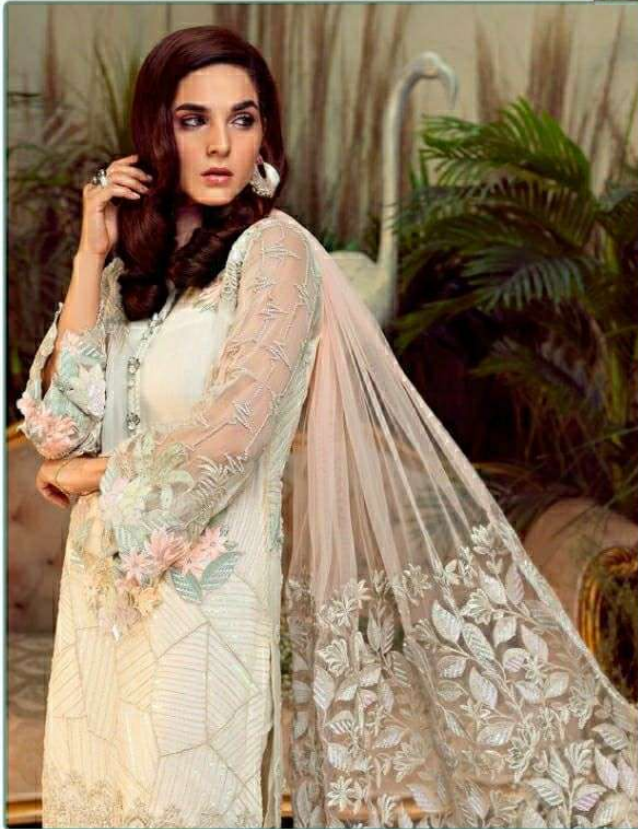
BOTTOM- DULL SANTOON

DUPATTA - NET EMBROIDERY WORK

- Ⓟ DRY CLEAN ONLY.
- ✂ DO NOT USE ANY BLEACH OR STAIN REMOVING CHEMICAL.
- ☎ IRON THE FABRIC AT MODERATE TEMPERATURE.



#R-191-A



TOP- GEORGET WITH HEAVY EMBROIDERY

BOTTOM- DULL SANTOON

DUPATTA - NET EMBROIDERY WORK

- Ⓟ DRY CLEAN ONLY.
- ✂ DO NOT USE ANY BLEACH OR STAIN REMOVING CHEMICAL.
- ☎ IRON THE FABRIC AT MODERATE TEMPERATURE.



Emb Sleeves

Emb Front

Emb Net Dupatta

Patch

Tassels





#R-191-B



TOP- GEORGET WITH HEAVY EMBROIDERY

BOTTOM- DULL SANTOON

DUPATTA - NET EMBROIDERY WORK

- Ⓟ DRY CLEAN ONLY.
- ✘ DO NOT USE ANY BLEACH OR STAIN REMOVING CHEMICAL.
- ☎ IRON THE FABRIC AT MODERATE TEMPERATURE.



Emb Sleeves

Emb Front

Emb Net Dupatta

Patch

Tassels



TOP: GARMENT WITH HEAVY EMBROIDERY
BOTTOM: FULL LENGTH SKIRT
ACCESSORY: NET EMBROIDERY DUPATTA



#R-191-C



TOP- GEORGET WITH HEAVY EMBROIDERY

BOTTOM- DULL SANTOON

DUPATTA - NET EMBROIDERY WORK

- Ⓟ DRY CLEAN ONLY.
- ✘ DO NOT USE ANY BLEACH OR STAIN REMOVING CHEMICAL.
- ☎ IRON THE FABRIC AT MODERATE TEMPERATURE.



Emb Net Dupatta

Emb Front

Emb Sleeves

Patch

Tassels

