



RAINBOW

Malai Cotton With B.P

Single Colour Matching



RAINBOW

Malai Cotton With B.P

Single Colour Matching

The logo for A.B. Cotton Design (P) Ltd. features the letters 'A', 'B', and 'C' intertwined in a stylized, purple, cursive font. Below the logo is a teal rectangular box containing the text 'A.B.COTTON DESIGN (P).LTD.' in white, uppercase letters.

A.B.COTTON DESIGN (P).LTD.

RAINBOW
With B.P



D.NO.
13



SAIB

A.B.COTTON DESIGN (P).LTD.

RAINBOW
With B.P

D.NO.
10

SAB

A.B.COTTON DESIGN (P).LTD.

RAINBOW
With B.P



The logo for A.B. Cotton Design (P) Ltd. features the letters 'A', 'B', and 'C' intertwined in a stylized, purple, cursive font.

A.B. COTTON DESIGN (P) LTD.

RAINBOW

With B.P



D.NO.
18



DNO 09



DNO 10



DNO 11



DNO 12



DNO 13



DNO 14



DNO 15



DNO 16



DNO 17



DNO 18



DNO 19



DNO 20



DNO 21



DNO 22



DNO 23

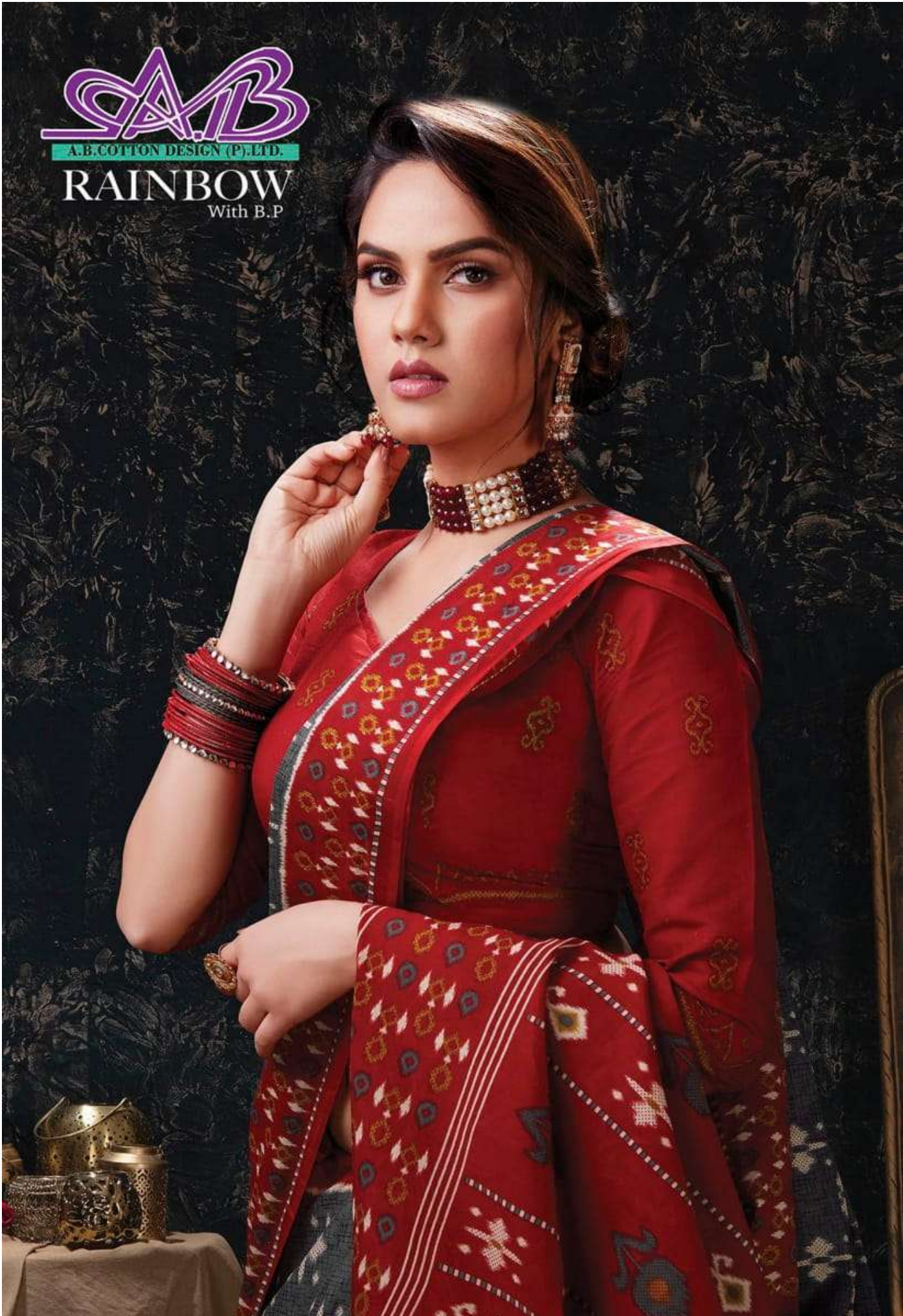


RAINBOW
Malai Cotton With B.P
Single Colour Matching

SAB

A.B. COTTON DESIGN (P) LTD.

RAINBOW
With B.P





SAIB

A.B.COTTON DESIGN (P).LTD.

RAINBOW
With B.P

D.NO.
20



SAIB

A.B.COTTON DESIGN (P).LTD.

RAINBOW
With B.P

D.NO.
17



SAIB

A.B.COTTON DESIGN (P).LTD.

RAINBOW
With B.P

D.NO.
11

SAIB
A.B.COTTON DESIGN (P).LTD.



D.NO.
16

A woman with long, wavy brown hair is wearing a saree with a green and pink color scheme. The saree has a repeating diamond pattern in green on a light background, and a wide pink border with a geometric zig-zag pattern. She is also wearing a pink blouse with a matching pattern. She is adorned with a gold necklace, multiple bangles, and a ring. The background is dark and textured, with a large, ornate, empty mirror frame to the right. In the bottom left corner, there is a small table with a white cloth and some decorative items.

SAB

A.B.COTTON DESIGN (P).LTD.

RAINBOW
With B.P

D.NO.
23



SAIB

A.B.COTTON DESIGN (P).LTD.

RAINBOW
With B.P

D.NO.
22



SAIB

A.B.COTTON DESIGN (P.)LTD.

RAINBOW
With B.P

D.NO.
21



SAIB

A.B.COTTON DESIGN (P).LTD.

RAINBOW
With B.P

D.NO.
14

A woman is the central figure, wearing a saree with a grey body and a red border. The saree features a repeating geometric pattern of white diamonds and squares. The red border is wide and contains a complex pattern of small geometric shapes and floral motifs in blue, green, and white. She is also wearing a red long-sleeved blouse with a subtle pattern. Her accessories include a gold and red choker, large earrings, a ring, and bangles. The background is dark and textured, with a decorative mirror and a table with brass vessels visible.

SAIB

A.B.COTTON DESIGN (P).LTD.

RAINBOW
With B.P

D.NO.
09



SAIB

A.B.COTTON DESIGN (P).LTD.

RAINBOW
With B.P

D.NO.
12



SAIB

A.B.COTTON DESIGN (P).LTD.

RAINBOW
With B.P

D.NO.
19

The logo for A.B. Cotton Design (P) Ltd. features the letters 'A', 'B', and 'C' in a stylized, overlapping purple font. The 'A' and 'B' are connected, and the 'C' is positioned below them. The letters are outlined in white and have a slight shadow effect.

A.B.COTTON DESIGN (P).LTD.

RAINBOW

With B.P



D.NO.
15