



#R-381-C



TOP- FOX GEORGET WITH HEAVY EMBROIDERY  
BOTTOM- SANTOON  
DUPATTA - BUTTERFLY NET HEAVY EMBROIDERY

Ⓟ DRY CLEAN ONLY.  
ⓧ DO NOT USE ANY BLEACH OR STAIN REMOVING CHEMICAL.  
☎ IRON THE FABRIC AT MODERATE TEMPERATURE.





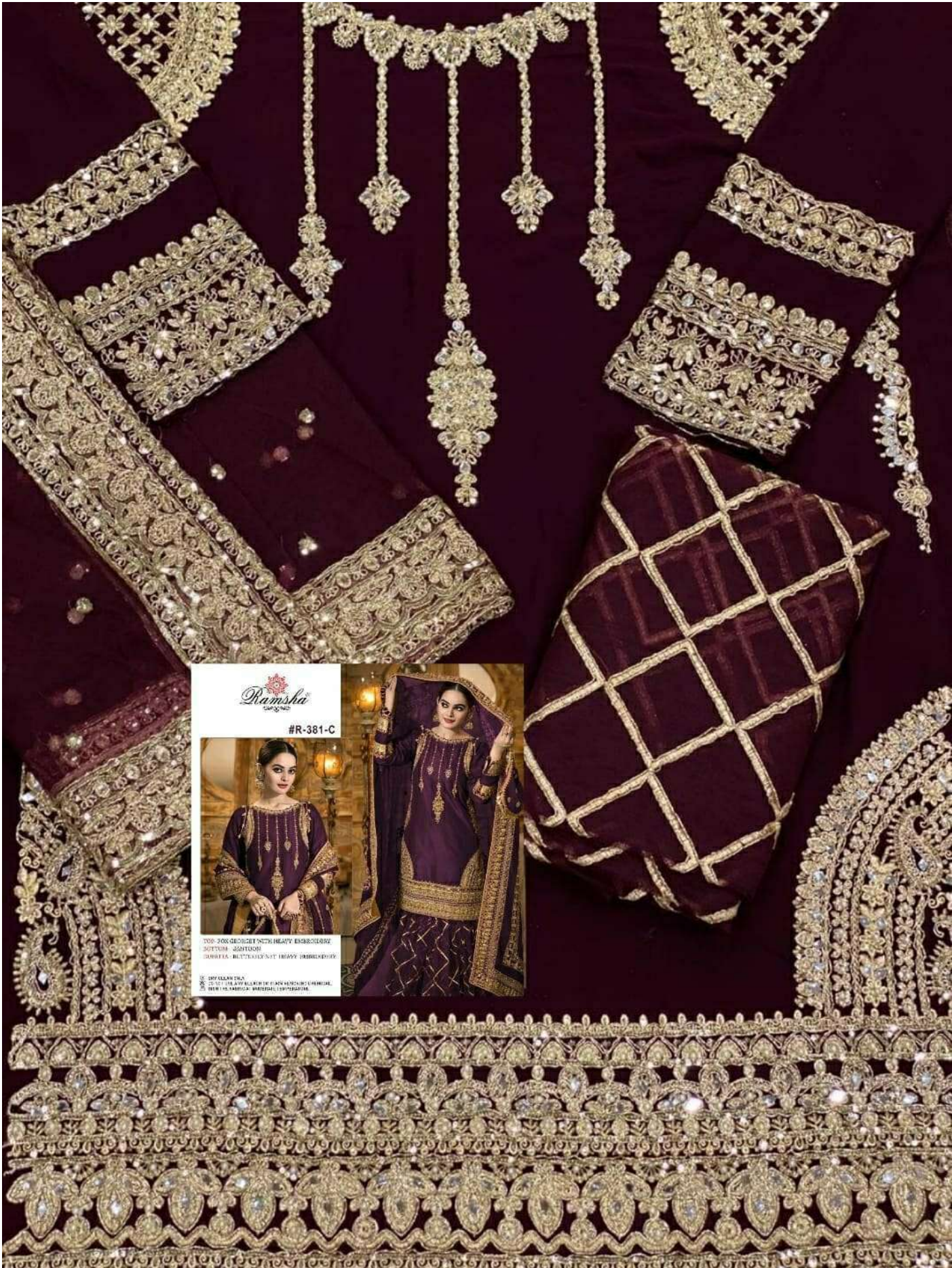
#R-381-C



TOP- FOX GEORGET WITH HEAVY EMBROIDERY  
BOTTOM- SANTOON  
DUPATTA - BUTTERFLY NET HEAVY EMBROIDERY



Ⓟ DRY CLEAN ONLY.  
✘ DO NOT USE ANY BLEACH OR STAIN REMOVING CHEMICAL.  
☎ IRON THE FABRIC AT MODERATE TEMPERATURE.



**Ramsha**  
*by Anamika Khanna*

#R-381-C

TOP: FOK DESIGN WITH HEAVY EMBROIDERY  
 BOTTOM: GEOMETRIC  
 SHAWLS: BUTTA DESIGN WITH HEAVY EMBROIDERY

☐ DRY CLEAN ONLY  
 ☐ USE THE LAZY BLEACHER IF CLEANING WITH MACHINE  
 ☐ IRON IN FABRIC'S SENSITIVE TEMPERATURE



*Ramsha*  
#R-381-D



TOP: FOX CROCKET WITH HEAVY EMBROIDERY  
BOTTOM: SATEEN  
DUPATTA: SATEEN WITH HEAVY EMBROIDERY

© 2016 RAMSHA  
© 2016 HEAVY EMBROIDERY IN SATEEN  
© 2016 THE SCALE OF THE GARMENT IS 1/4"



#R-381-D



TOP- FOX GEORGET WITH HEAVY EMBROIDERY  
BOTTOM- SANTOON  
DUPATTA - BUTTERFLY NET HEAVY EMBROIDERY



Ⓟ DRY CLEAN ONLY.  
ⓧ DO NOT USE ANY BLEACH OR STAIN REMOVING CHEMICAL.  
Ⓡ IRON THE FABRIC AT MODERATE TEMPERATURE.