



Ramsha®



#R-270-A

TOP- GEORGET WITH HEAVY EMBROIDERY  
BOTTOM- DULL SANTOON WITH PATCH WORK  
DUPATTA - NAZMEEN HEAVY EMBROIDERY WORK





Ramsha®



#R-270-A

TOP- GEORGET WITH HEAVY EMBROIDERY  
BOTTOM- DULL SANTOON WITH PATCH WORK  
DUPATTA - NAZMEEN HEAVY EMBROIDERY WORK







Emb Front

Emb Chiffon Dupatta

Emb Sleeves

Bottom

Patch



TOP: CROCKET WITH HEAVY EMBROIDERY  
BOTTOM: SIDE SPLITTING WITH PATCH WORK  
SHIRT: RAZMIEN HEAVY EMBROIDERY W/





Emb Front

Emb Chiffon Dupatta

Emb Sleeves

Bottom

Patch







Emb Sleeves

Emb Front

Emb Chiffon Dupatta

Bottom

Patch



Kamshi

TOP - GEORGETTE WITH HEAVY EMBROIDERY  
KOTYONS - SATEEN WITH HEAVY EMBROIDERY  
DUPATTA - NET WITH HEAVY EMBROIDERY WORK





Emb Front

Emb Sleeves

Emb Chiffon Dupatta

Bottom

Patch

Ramsha



TOP: GEOMETRIC WITH HEAVY EMBROIDERY  
BOTTOM: SLEEK, SANSKON WITH HEAVY WORK  
DUPATTA: NAZAMEN BEAVY EMBROIDERY/PORK





Ramsha®



#R-270-B

TOP- GEORGET WITH HEAVY EMBROIDERY  
BOTTOM- DULL SANTOON WITH PATCH WORK  
DUPATTA - NAZMEEN HEAVY EMBROIDERY WORK



Ramsha®



#R-270-C

TOP- GEORGET WITH HEAVY EMBROIDERY  
BOTTOM- DULL SANTOON WITH PATCH WORK  
DUPATTA - NAZMEEN HEAVY EMBROIDERY WORK



Ramsha®



#R-270-D

TOP- GEORGET WITH HEAVY EMBROIDERY  
BOTTOM- DULL SANTOON WITH PATCH WORK  
DUPATTA - NAZMEEN HEAVY EMBROIDERY WORK





  
Ramsha®



#R-270



#R-270-A



#R-270-B



#R-270-C

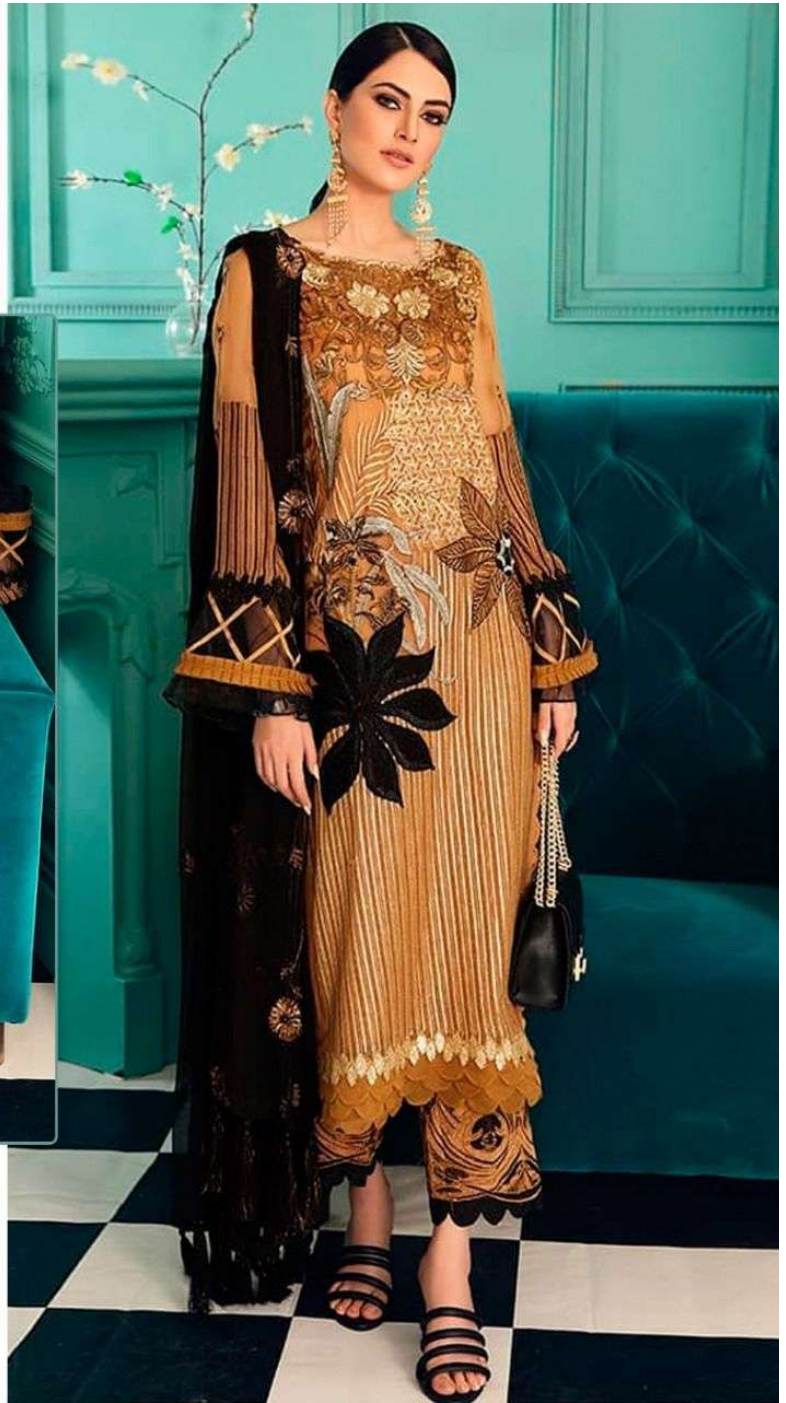


#R-270-D





#R-270



TOP- GEORGET WITH HEAVY EMBROIDERY  
BOTTOM- DULL SANTOON WITH PATCH WORK  
DUPATTA - NAZMEEN HEAVY EMBROIDERY WORK

- Ⓟ DRY CLEAN ONLY.
- ⓧ DO NOT USE ANY BLEACH OR STAIN REMOVING CHEMICAL.
- ☎ IRON THE FABRIC AT MODERATE TEMPERATURE.





Emb Sleeves

Emb Chiffon Dupatta

Emb Front

Bottom

Patch



TOP- GEORGETT WITH HEAVY EMBROIDERY  
BOTTOM- DILL SARTOON WITH PATCH WORK  
DUPATTA- NAZKHEEN HEAVY EMBROIDERY WORK