

**FABRIC DETAILS**  
**TOP- FOX GEORGETTE**  
**BOTTOM - JACQUARD**  
**INNER-SANTOON**  
**DUPPTA- BUTTERFLY NET**

*Rose* **BRIDAL**  
**S-73**

**WASHING INSTRUCTIONS**

DO NOT USE ANY TYPE OF BLEACH OR STAIN REMOVING CHEMICALS  
 BEFORE CUTTING / STITCHING, FABRIC SHOULD BE SOAKED IN WATER  
 ( ALL COMPONENTS SEPARATELY ) FOR 15 MINUTES  
 DO NOT KEEP WET FABRIC IN TWISTED FORM IN ORDER TO AVOID COPY MARKS |  
 WASH COLOURED AND WHITE FABRICS SEPARATELY  
 IRON CLOTHES AT MODERATE TEMPERATURE | DO NOT DRY FABRIC IN DIRECT SUNLIGHT  
 ( EXTRA LACES, HANGINGS AND ACCESSORIES ARE NOT INLUDED )

U



HELLO TO EVERYONE



S-73 A



S-73 B



S-73 C

*Rose* BRIDAL

S-73





**SHANAYA**



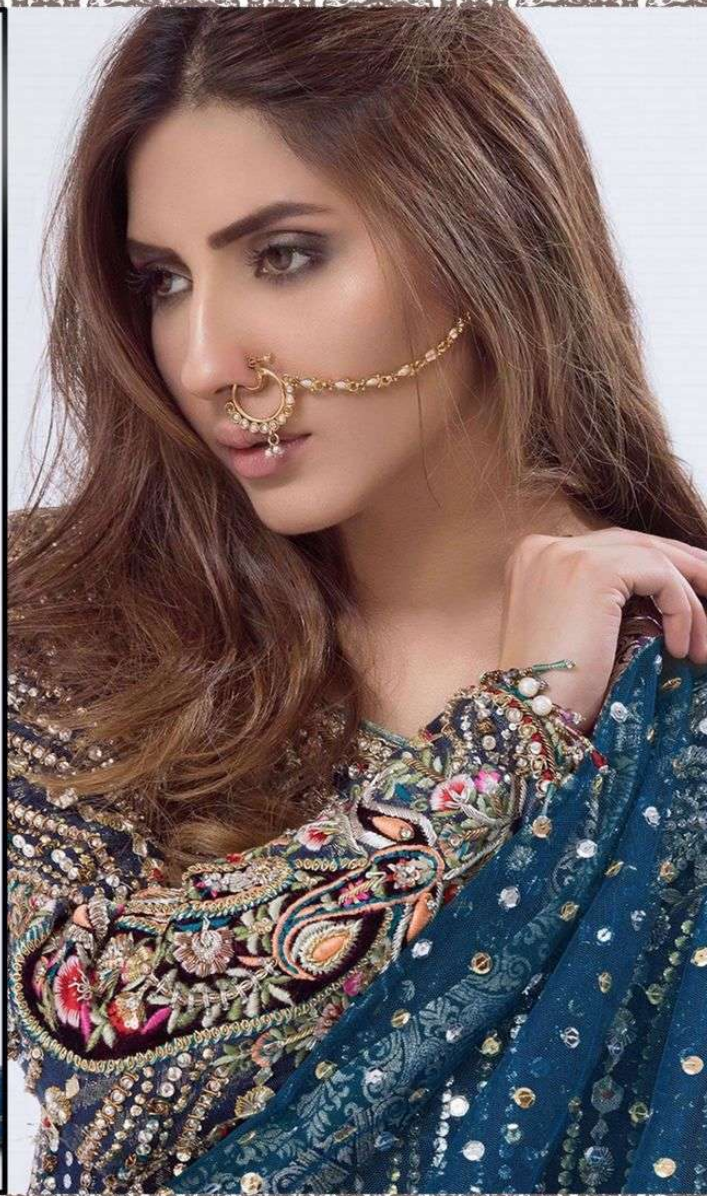
**Rose BRIDAL**  
S-73

**FABRIC DETAILS**  
SHIRAZI CHROME DYE  
SILK & COTTON  
DUPPIE BUTTERFLY CUT

IN THE PHOTO SHOWN IS ONLY ONE OF THE MANY STYLES AVAILABLE IN THIS COLLECTION. FOR MORE INFORMATION PLEASE CONTACT US AT 021-99999999. WE ARE OPEN 24 HOURS A DAY, 7 DAYS A WEEK. VISIT US AT WWW.SHANAYA.COM







**FABRIC DETAILS**  
**TOP- FOX GEORGETTE**  
**BOTTOM - JACQUARD**  
**INNER-SANTOON**  
**DUPPTA- BUTTERFLY NET**

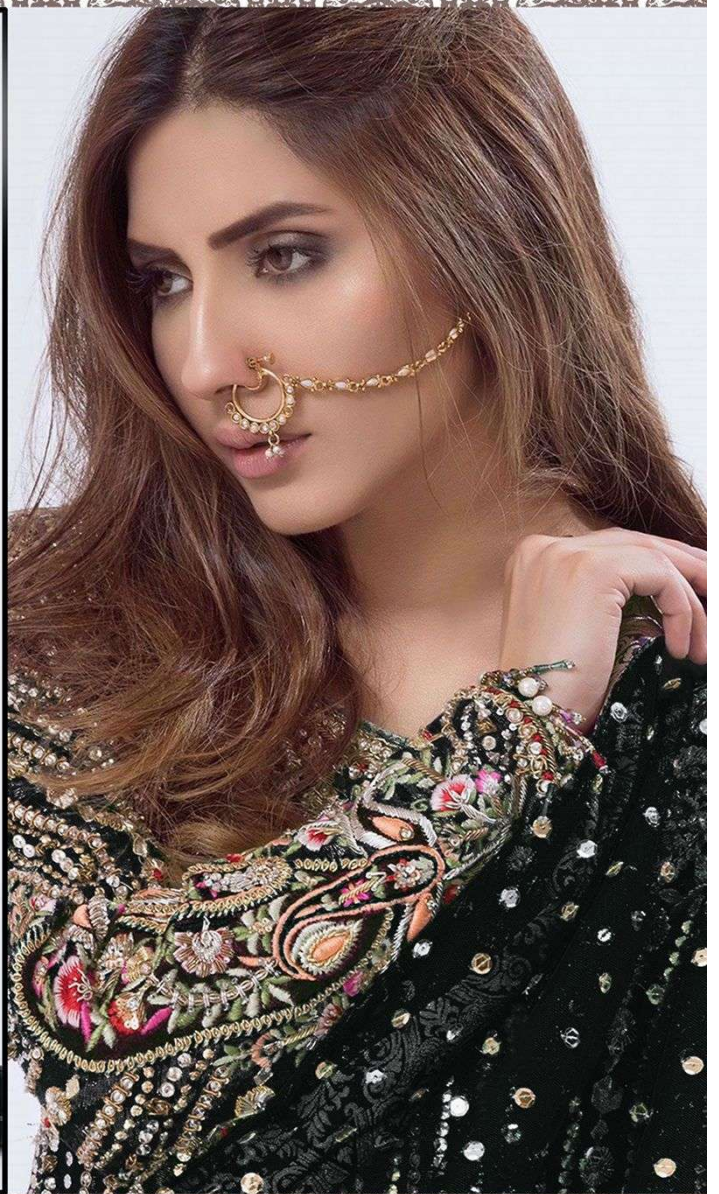
*Rose* **BRIDAL**  
**S-73**

**WASHING INSTRUCTIONS**

DO NOT USE ANY TYPE OF BLEACH OR STAIN REMOVING CHEMICALS  
 BEFORE CUTTING / STITCHING, FABRIC SHOULD BE SOAKED IN WATER  
 ( ALL COMPONENTS SEPARATELY ) FOR 15 MINUTES  
 DO NOT KEEP WET FABRIC IN TWISTED FORM IN ORDER TO AVOID COPY MARKS |  
 WASH COLOURED AND WHITE FABRICS SEPARATELY  
 IRON CLOTHES AT MODERATE TEMPERATURE | DO NOT DRY FABRIC IN DIRECT SUNLIGHT  
 ( EXTRA LACES, HANGINGS AND ACCESSORIES ARE NOT INLUDED )

U





**FABRIC DETAILS**  
**TOP- FOX GEORGETTE**  
**BOTTOM - JACQUARD**  
**INNER-SANTOON**  
**DUPPTA- BUTTERFLY NET**

*Rose* **BRIDAL**  
**S-73 C**

**WASHING INSTRUCTIONS**

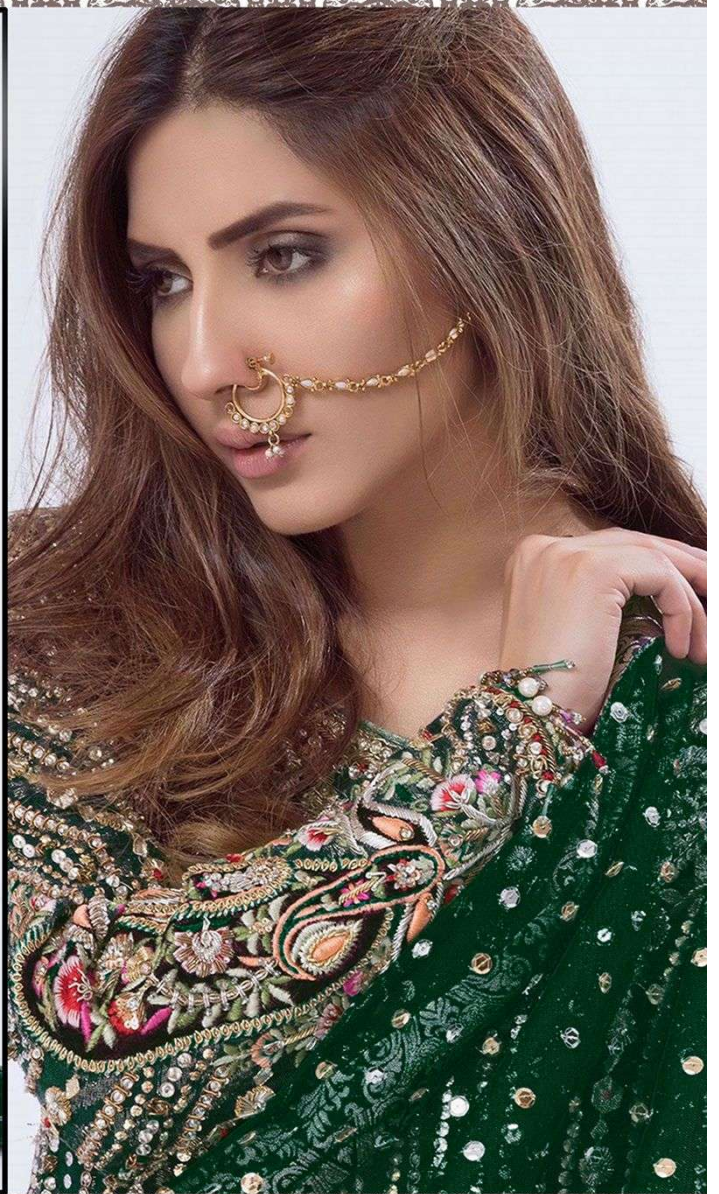
DO NOT USE ANY TYPE OF BLEACH OR STAIN REMOVING CHEMICALS BEFORE CUTTING / STITCHING, FABRIC SHOULD BE SOAKED IN WATER ( ALL COMPONENTS SEPARATELY ) FOR 15 MINUTES  
 DO NOT KEEP WET FABRIC IN TWISTED FROM IN ORDER TO AVOID COPY MARKS |  
 WASH COLOURED AND WHITE FABRICS SEPARATELY  
 IRON CLOTHES AT MODERATE TEMPERATURE | DO NOT DRY FABRIC IN DIRECT SUNLIGHT  
 ( EXTRA LACES, HANGINGS AND ACCESSORIES ARE NOT INLUDED )

U





SF  
**SHANAYA**<sup>®</sup>



**FABRIC DETAILS**  
 TOP- FOX GEORGETTE  
 BOTTAM - JACQUARD  
 INNER-SANTOON  
 DUPPTA- BUTTERFLY NET

*Rose* **BRIDAL**  
 S-73 B

**WASHING INSTRUCTIONS**

DO NOT USE ANY TYPE OF BLEACH OR STAIN REMOVING CHEMICALS BEFORE CUTTING / STITCHING, FABRIC SHOULD BE SOAKED IN WATER ( ALL COMPONENTS SEPARATELY ) FOR 15 MINUTES  
 DO NOT KEEP WET FABRIC IN TWISTED FROM IN ORDER TO AVOID COPY MARKS |  
 WASH COLOURED AND WHITE FABRICS SEPARATELY  
 IRON CLOTHES AT MODERATE TEMPERATURE | DO NOT DRY FABRIC IN DIRECT SUNLIGHT  
 ( EXTRA LACES, HANGINGS AND ACCESSORIES ARE NOT INDUDED )

U





**SHANAYA**

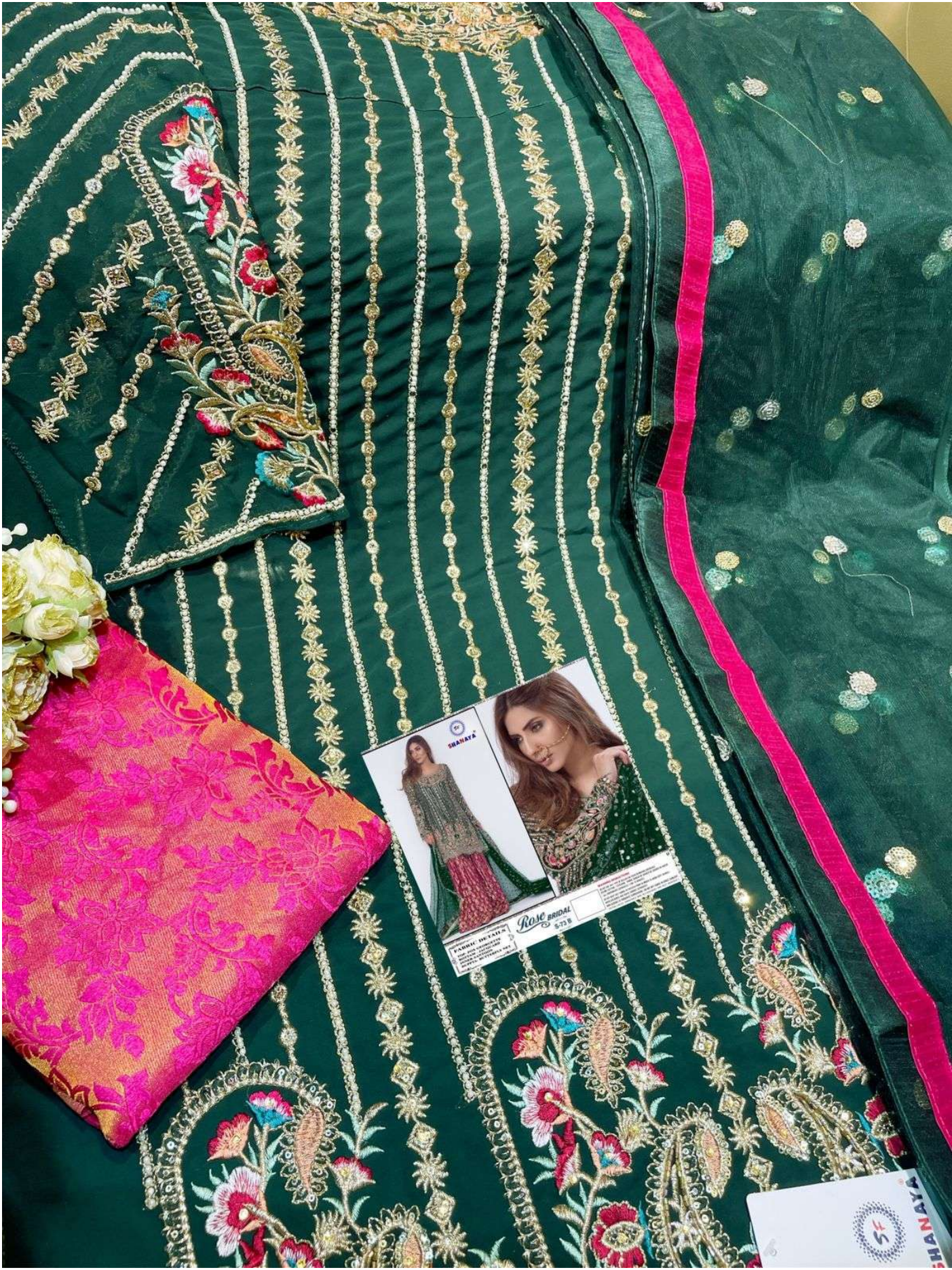
**ROSE BRIDAL**

**FABRIC DETAILS**

TOP: POP COTTON  
MID: NET LACE  
BOTTOM: NET LACE  
EMBROIDERY: GOLD, SILVER, RED, GREEN, BLUE, PINK, YELLOW, WHITE

5-73





SHAHIYA

ROSE BRIDAL 8-738

PARHAI DE L'ART

100% COTON

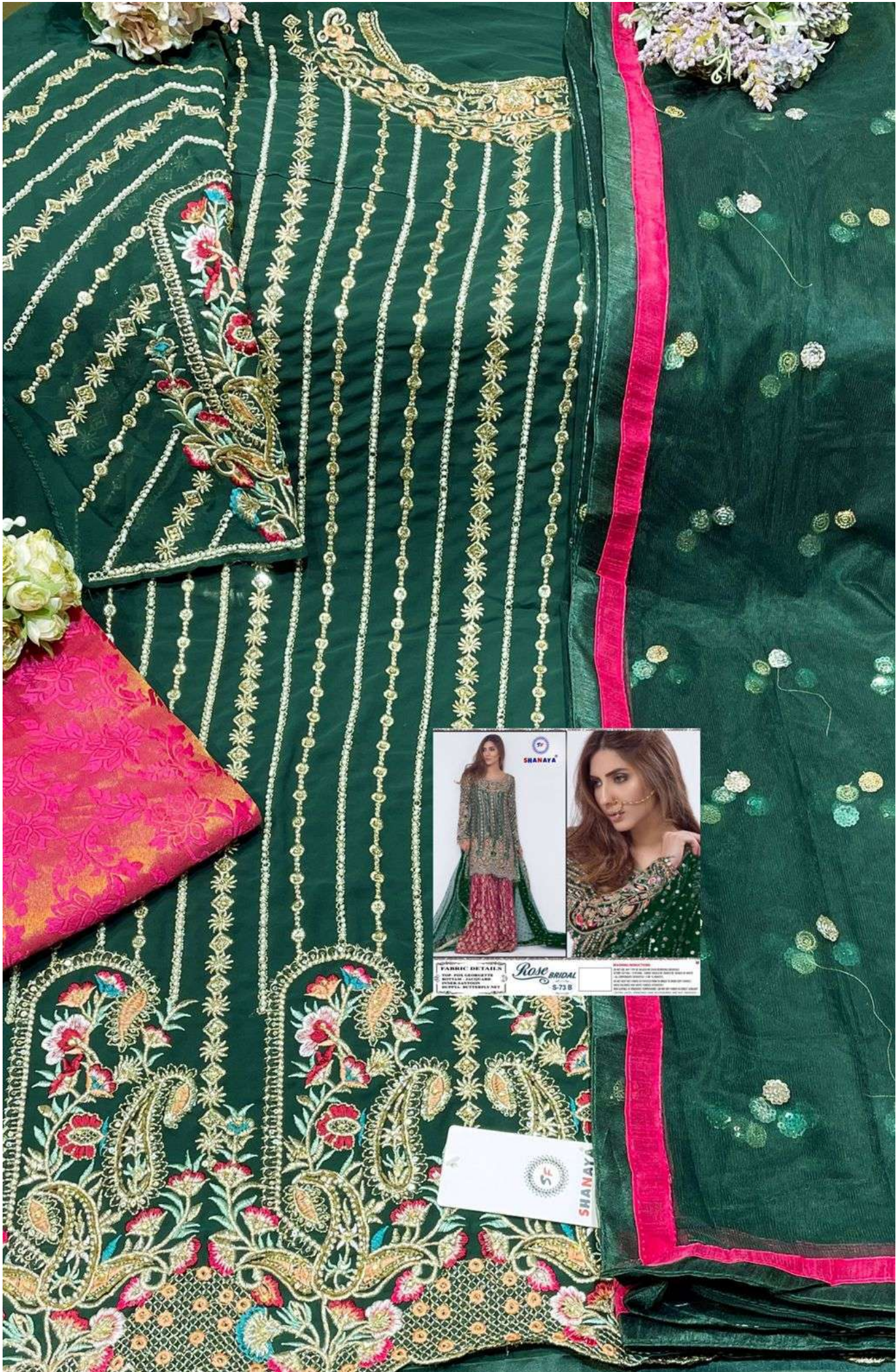
100% COTON

100% COTON

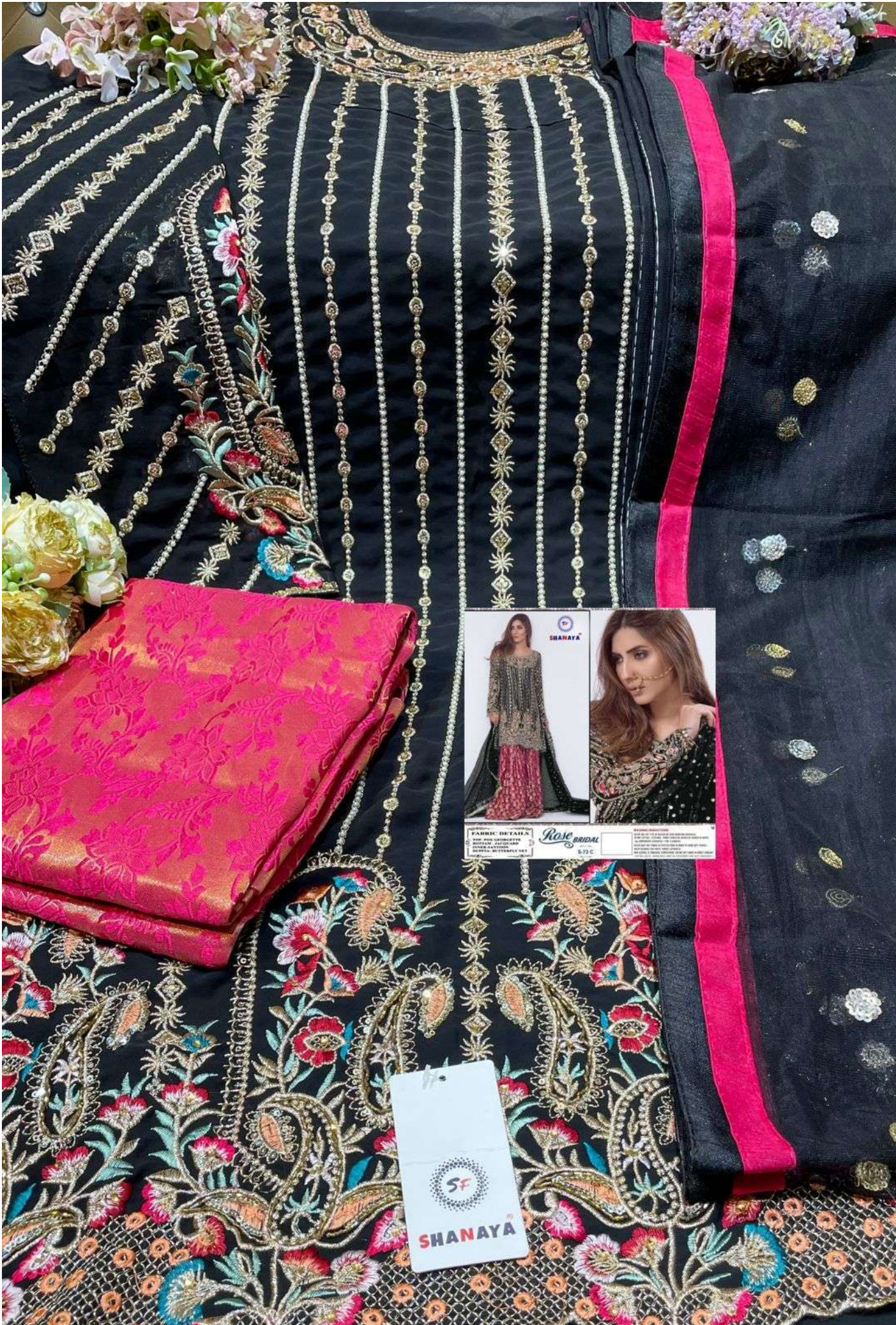
100% COTON

SHAHIYA









**SHANAYA**

**Rose bridal**

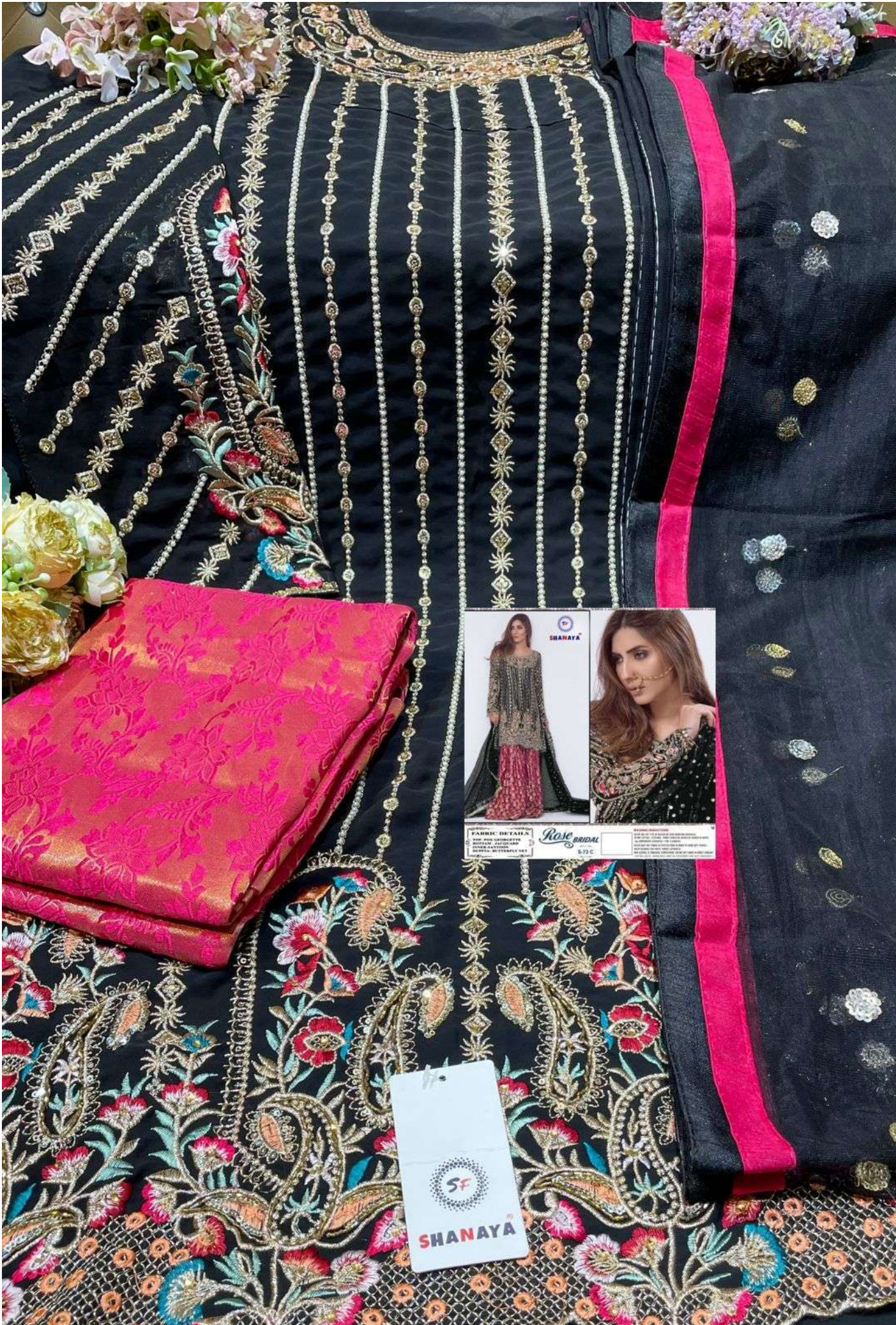
**FABRIC DETAILS**  
TOP: 100% COTTON  
BOTTOM: 100% COTTON  
INNER: 100% COTTON

**SIZE**  
S-72 C

1. All measurements are given in centimeters. 2. The model is wearing size S. 3. The dress is made of 100% cotton. 4. The dress is available in black and red. 5. The dress is available in sizes S, M, and L. 6. The dress is available in sizes S, M, and L. 7. The dress is available in sizes S, M, and L. 8. The dress is available in sizes S, M, and L. 9. The dress is available in sizes S, M, and L. 10. The dress is available in sizes S, M, and L.

**SF**  
**SHANAYA**





**SHANAYA**



**FABRIC DETAILS**  
100% POLYESTER  
NETTING, JACQUARD  
EMBROIDERY, NETTING

*Rose bridal*

8.72 C

100% POLYESTER  
NETTING, JACQUARD  
EMBROIDERY, NETTING

**SF**  
**SHANAYA**





**ANAYA**

*Rose BRIDAL*

FABRIC: NET Tulle  
Length: 1.50m  
Width: 1.50m

SF  
**ANAYA**