

A close-up photograph of a woman's face and neck, looking upwards. She is wearing a vibrant yellow and green sari with a geometric pattern. Her jewelry includes a large, ornate necklace with a central square pendant and multiple strands of colorful beads (red, green, yellow, pink). She is also wearing a matching earring with a large, faceted diamond-shaped pendant and hanging beads. The background is a textured, light-colored wall.

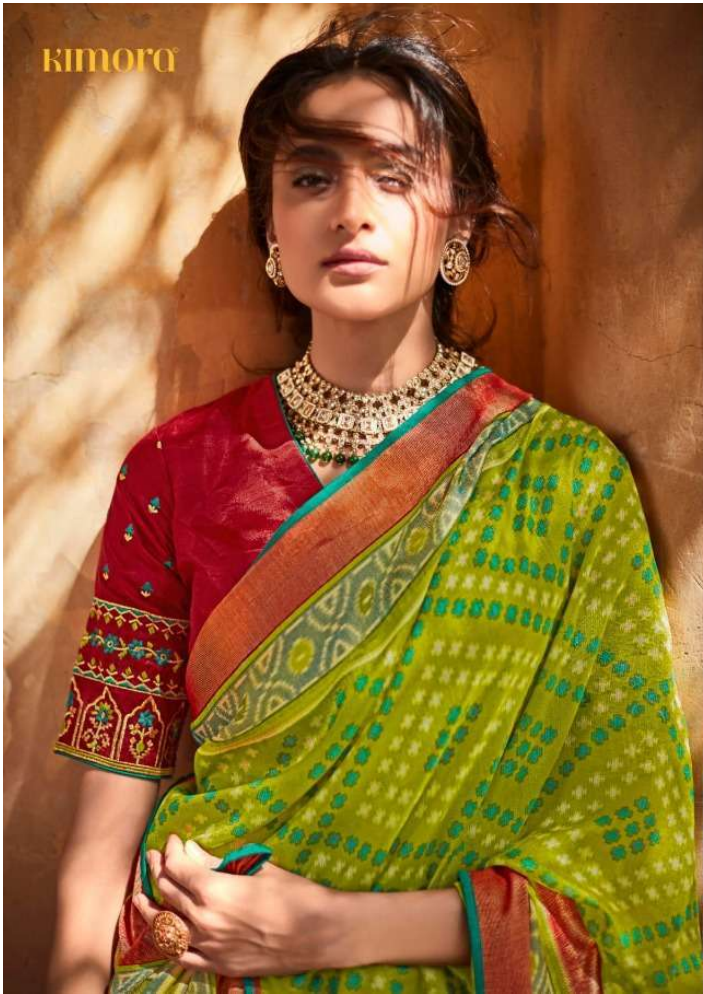
KIMORA®

Meera
vol-4

A close-up photograph of a woman with dark hair, wearing a vibrant yellow and green sari with a geometric pattern. She is adorned with a large, ornate necklace featuring a central square pendant with a red gemstone, surrounded by colorful beads in shades of pink, green, and yellow. She also wears a matching earring with a large, faceted diamond-shaped pendant and a red gemstone. Her eyes are closed, and her hand is raised to her forehead. The background is a textured, light-colored wall.

KIMORA®

Meera
vol-4



kimora



P 15070





hira

P 15061



KIMORA



P 15069



KIMORA



P 15067



KIMORA



P 15062



KIMORA







P 15066



KIMORA

kimora



P 15064



KIMORA®



P 15063





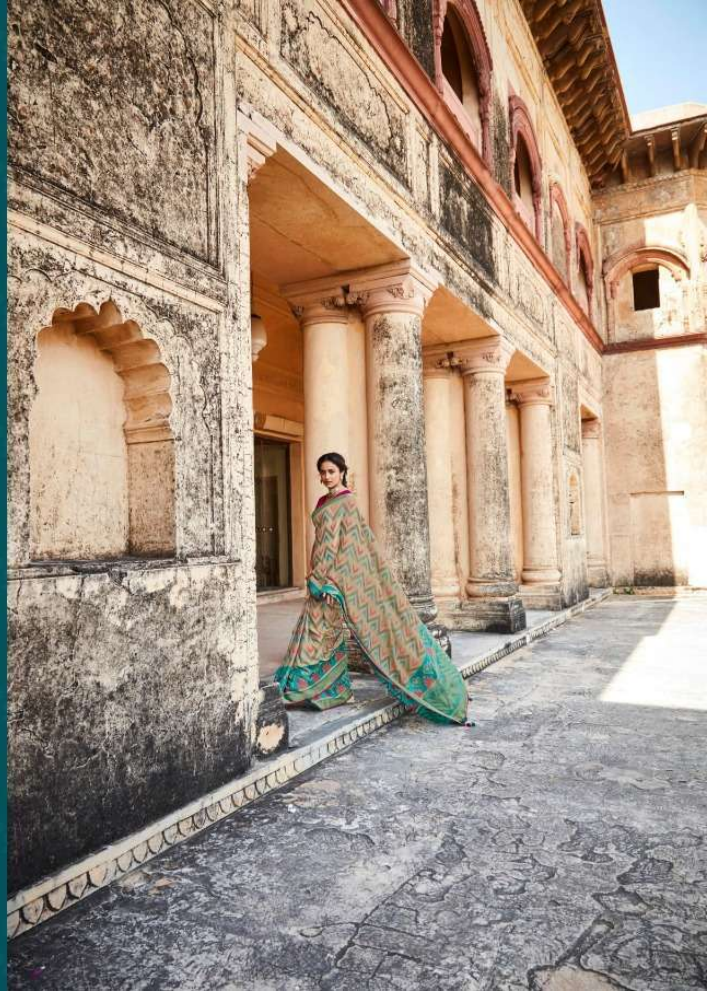
KIMORA



P 15066



KIMORA





KIMORA



P 15061





KIMORA

P 15062



KIMORA



P 15065



KIMORA®



P 15071

