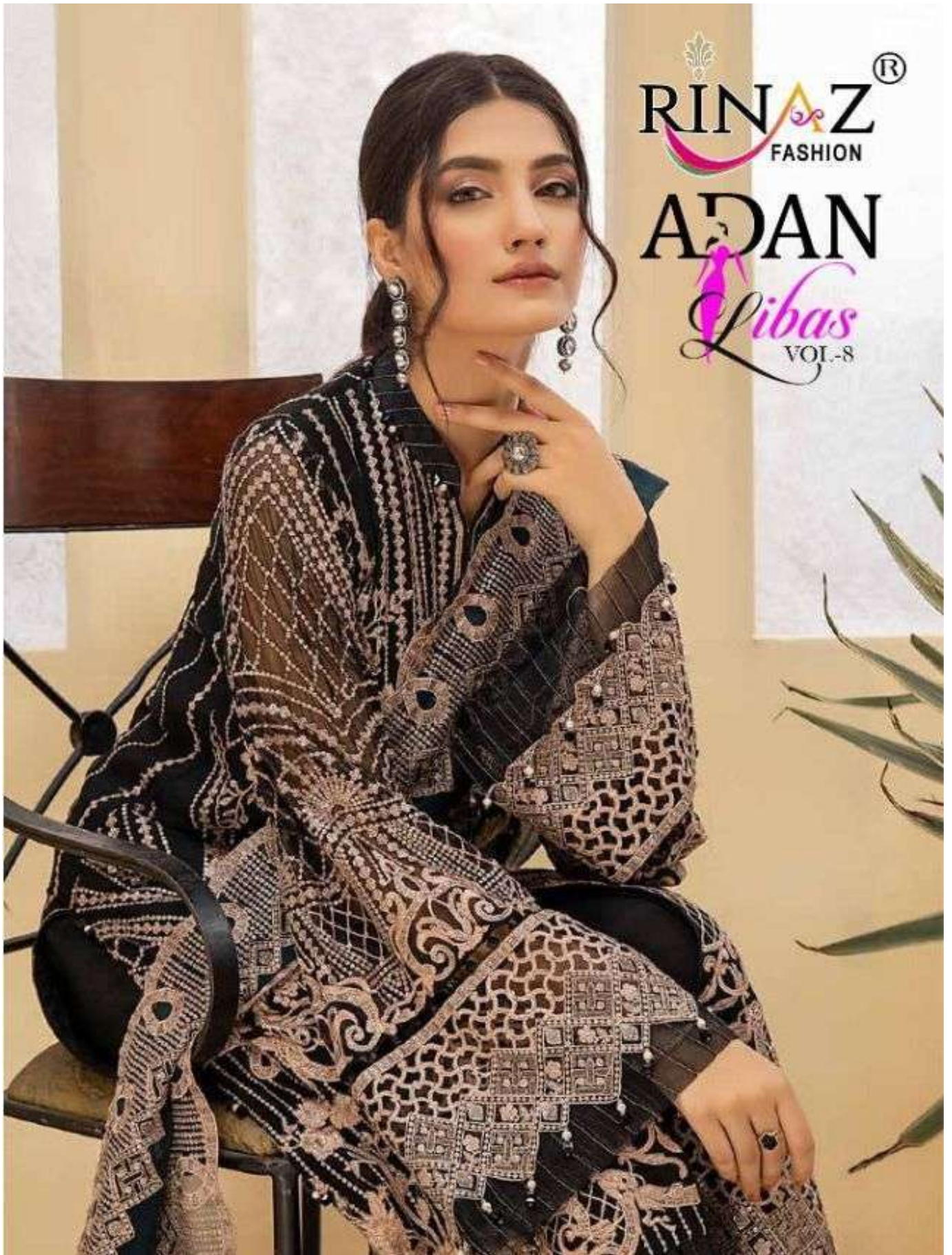


RINAZ[®]
FASHION

ADAN

Libas
VOL-8



RINAZ[®]
FASHION



D.NO-9901



D.NO-9902

ADAN
Libas
VOL-8



D.NO-9903



D.NO-9904

RINAZ[®]
FASHION

ADAN
Libas
VOL-8



D.No.	TOP	BOTTOM	DUPATTA
9901	FOR GEORGETTE WITH HEAVY EMBROIDERY & DIAMOND WORK	HEAVY SHANTUN	NAZNIN WITH HEAVY EMBROIDERY
9902	FOR GEORGETTE WITH HEAVY EMBROIDERY & DIAMOND WORK	HEAVY SHANTUN	BUTTERFLY NET WITH HEAVY EMBROIDERY
9903	FOR GEORGETTE WITH HEAVY EMBROIDERY & DIAMOND WORK	HEAVY SHANTUN	NAZNIN WITH HEAVY EMBROIDERY
9904	FOR GEORGETTE WITH HEAVY EMBROIDERY & DIAMOND WORK	HEAVY SHANTUN	NAZNIN WITH HEAVY EMBROIDERY

***NOTE : Rate 1295 + GST Extra.**



Retro Finesse



RINAZ[®]
FASHION

D.NO.9801

WASHING INSTRUCTIONS

DO NOT USE ANY TYPE OF BLEACH OR STAIN REMOVING CHEMICALS BEFORE CUTTING / STITCHING. FABRIC SHOULD BE SOAKED IN WATER (ALL COMPONENTS SEPARATELY) FOR 15 MINUTES
DO NOT KEEP WET FABRIC IN TWISTED FROM IN ORDER TO AVOID COPY MKRS !
WASH COLOURED AND WHITE FABRICS SEPARATELY
IRON CLOTHES AT MODERATE TEMPERATURE ! DO NOT DRY FABRIC IN DIRECT SUNLIGHT
(EXTRA LACES, HANGING AND ACCESSORIES ARE NOT INDUDED)

TOP - FOX GEORGETTE WITH HEAVY EMBROIDERY & DIAMOND WORK.
BOTTOM - HEAVY SHANTUN
DUPATTA - NAZNIN WITH HEAVY EMBROIDERY.

ADAN
Libas
VOL-8



RINAZ[®]
FASHION

D.NO.9804



WASHING INSTRUCTIONS

DO NOT USE ANY TYPE OF BLEACH OR STAIN REMOVING CHEMICALS
BEFORE CUTTING / STITCHING. FABRIC SHOULD BE SOAKED IN WATER
(ALL COMPONENTS SEPARATELY) FOR 15 MINUTES
DO NOT KEEP WET FABRIC IN TWISTED FORM IN ORDER TO AVOID COPY MARKS !
WASH COLOURED AND WHITE FABRICS SEPARATELY
IRON CLOTHES AT MODERATE TEMPERATURE ! DO NOT DRY FABRIC IN DIRECT SUNLIGHT
(EXTRA LACES, HANGING AND ACCESSORIES ARE NOT INCLUDED)

TOP - FOX GEORGETTE WITH HEAVY EMBROIDERY & DIAMOND WORK.
BOTTOM - HEAVY SHANTUN
DUPATTA - NAZNIN WITH HEAVY EMBROIDERY.

ADAN
Libas
VOL-8





RINAZ[®]
FASHION

D.NO.9803

WASHING INSTRUCTIONS

DO NOT USE ANY TYPE OF BLEACH OR STAIN REMOVING CHEMICALS BEFORE CUTTING / STITCHING. FABRIC SHOULD BE SOAKED IN WATER (ALL COMPONENTS SEPARATELY) FOR 15 MINUTES
DO NOT KEEP WET FABRIC IN TWISTED FROM IN ORDER TO AVOID COPY MKRS !
WASH COLOURED AND WHITE FABRICS SEPARATELY
IRON CLOTHES AT MODERATE TEMPERATURE ! DO NOT DRY FABRIC IN DIRECT SUNLIGHT
(EXTRA LACES, HANGING AND ACCESSORIES ARE NOT INDUDED)

TOP - FOX GEORGETTE WITH HEAVY EMBROIDERY & DIAMOND WORK.
BOTTOM - HEAVY SHANTUN
DUPATTA - NAZNIN WITH HEAVY EMBROIDERY.

ADAN
Libas
VOL-8





RINAZ[®]
FASHION

ADAN

Libas
VOL-8

RINAZ[®]
FASHION

D.NO.9802



This clo
ensem
like to e

WASHING INSTRUCTIONS

DO NOT USE ANY TYPE OF BLEACH OR STAIN REMOVING CHEMICALS
BEFORE CUTTING / STITCHING. FABRIC SHOULD BE SOAKED IN WATER
(ALL COMPONENTS SEPARATELY) FOR 15 MINUTES
DO NOT KEEP WET FABRIC IN TWISTED FORM IN ORDER TO AVOID COPY MARKS !
WASH COLOURED AND WHITE FABRICS SEPARATELY
IRON CLOTHES AT MODERATE TEMPERATURE ! DO NOT DRY FABRIC IN DIRECT SUNLIGHT
(EXTRA LACES, HANGING AND ACCESSORIES ARE NOT INCLUDED)

TOP - FOX GEORGETTE WITH HEAVY
EMBROIDERY & DIAMOND WORK.
BOTTOM - HEAVY SHANTUN
DUPATTA - BUTTERFLY NET WITH
HEAVY EMBROIDERY.

ADAN
Libas
VOL-8

