

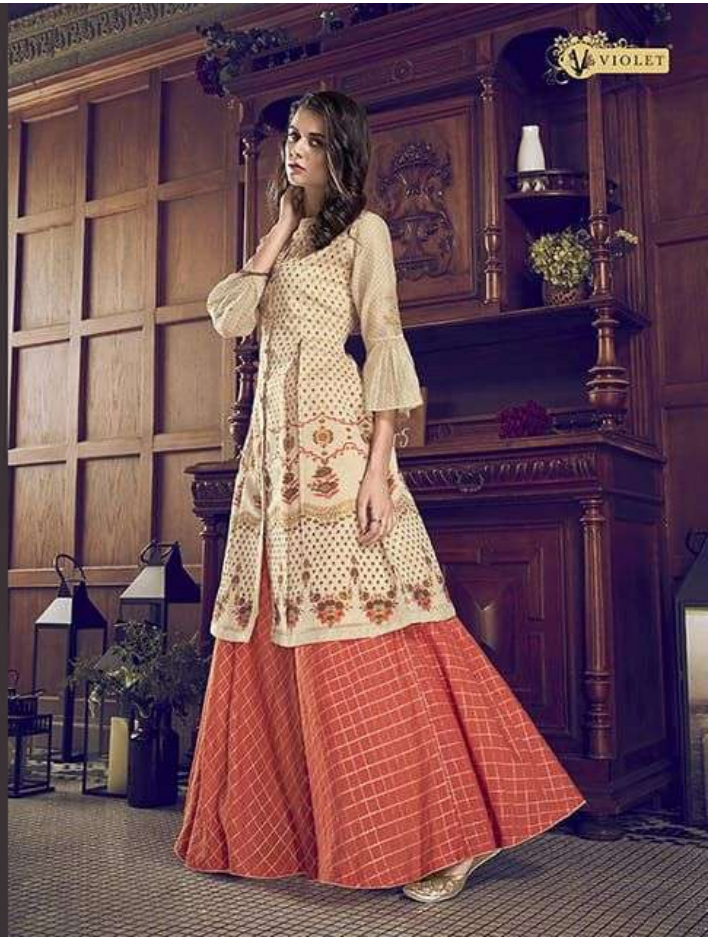




5009



5007





5008





5004





VIOLET

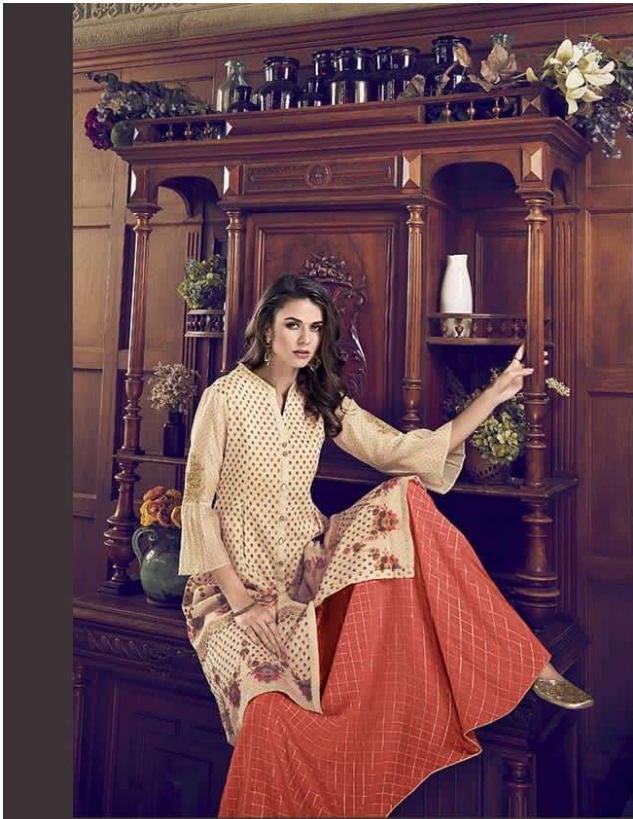
5005



5006







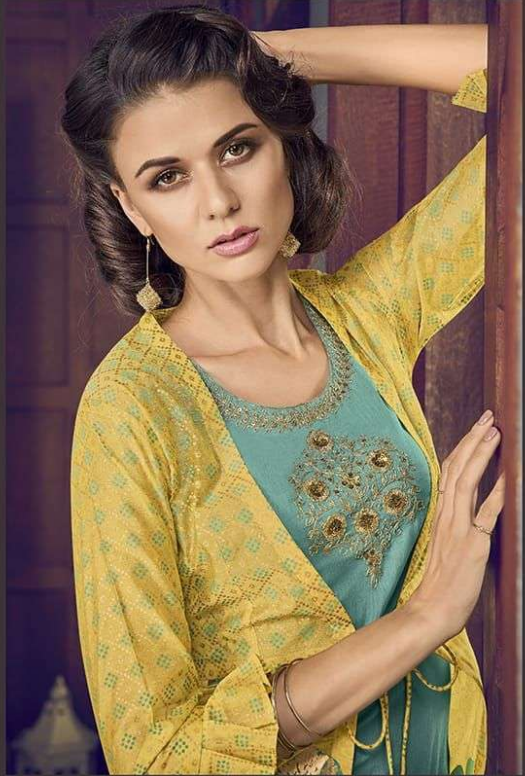
5007





5001





5002



5012





5010







5001



5002



5003



5004



5005



5006



5007



5008



5009



5010



5011



5012







| D.NO | TOP           | INNER              | BOTTOM        | DUPATTA          | RATE |
|------|---------------|--------------------|---------------|------------------|------|
| 5001 | TUSSER SILK   | -                  | ATG SILK      | COTTON JAQUARD   | 2155 |
|      |               |                    |               | HAND SPRAY PRINT |      |
| 5002 | PURE ART SILK | COTTON             | -             | COTTON           | 1860 |
| 5003 | PURE ART SILK | RUSSIAN SILK       | RUSSIAN SILK  | COTTON           | 1790 |
| 5004 | PURE ART SILK | COTTON             | -             | COTTON           | 1790 |
| 5005 | TUSSER SILK   |                    | ATG SILK      | COTTON JAQUARD   | 1980 |
|      |               |                    |               | HAND SPRAY PRINT |      |
| 5006 | PURE ART SILK | MADURAI SILK       | MADURAI SILK  | COTTON           | 1790 |
| 5007 | PURE ART SILK | COTTON             | PURE CHECKS   | COTTON           | 2155 |
| 5008 | TUSSER SILK   | -                  | ATG SILK      | BLUE CHERRY      | 2090 |
|      |               |                    |               | DIGITAL PRINT    |      |
| 5009 | PURE ART SILK | PURE CHECKS + GOLI | -             | COTTON           | 2090 |
| 5010 | PURE ART SILK | TWO TONE SILK      | TWO TONE SILK | COTTON           | 1860 |
| 5011 | PURE ART SILK | COTTON             | COTTON        | COTTON           | 1980 |
| 5012 | PURE ART SILK | RUSSIAN SILK       | RUSSIAN SILK  | COTTON           | 1860 |
|      |               |                    |               |                  |      |

TOTAL PCS=12

TOTAL AMOUNT=23400

AVG. AMOUNT=1950+GST