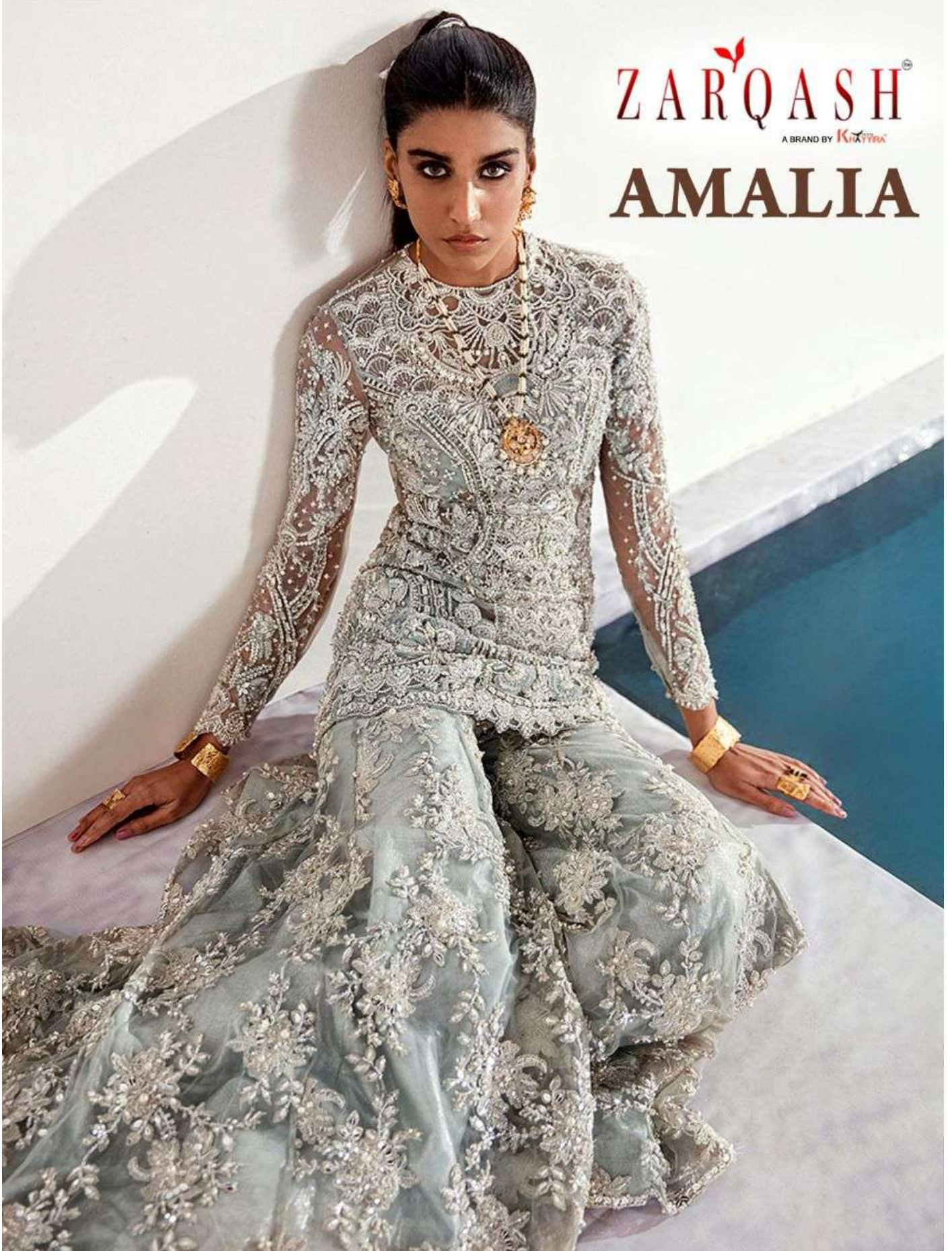


ZARQASH<sup>®</sup>

A BRAND BY KIRKAYRA

AMALIA







D.NO.Z-2052 A



D.NO.Z-2052 B



D.NO.Z-2052 C



D.NO.Z-2052 D



D.NO.Z-2052 E

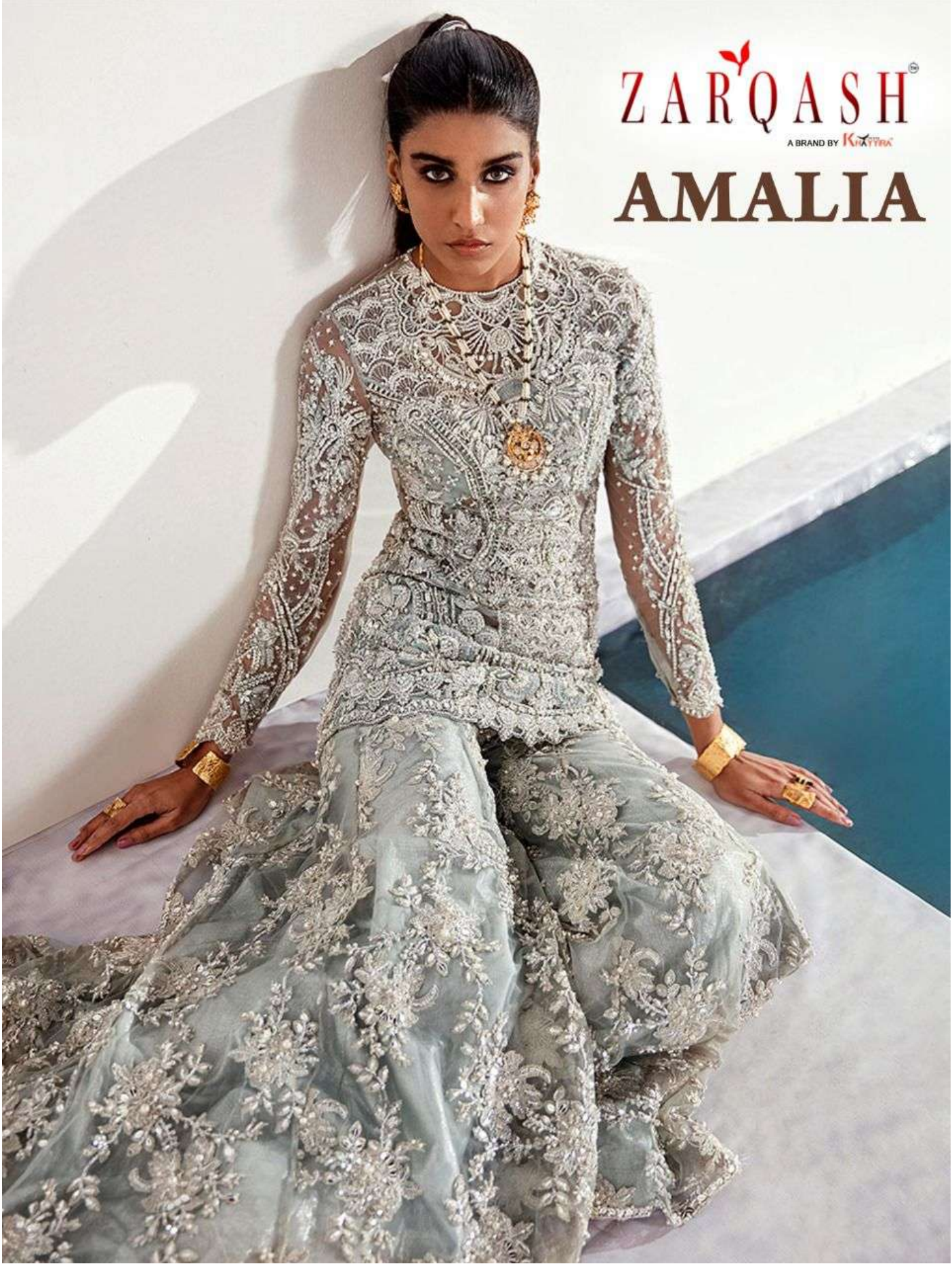
TOP - BUTTERFLY NET HEAVY EMBROIDERED UNSTITCH  
T/B INNER - HEAVY SANTOON  
BOTTOM - BUTTERFLY NET HEAVY EMBROIDERED  
DUPATTA - BUTTERFLY NET HEAVY EMBROIDERED



ZARQASH<sup>®</sup>

A BRAND BY KIRKAYRA

AMALIA







ZARQASH

NO. Z-2052 A







**TOP - BUTTERFLY NET HEAVY EMBROIDERED UNSTITCH**  
**T/B INNER - HEAVY SANTOON**  
**BOTTOM - BUTTERFLY NET HEAVY EMBROIDERED**  
**DUPATTA - BUTTERFLY NET HEAVY EMBROIDERED**

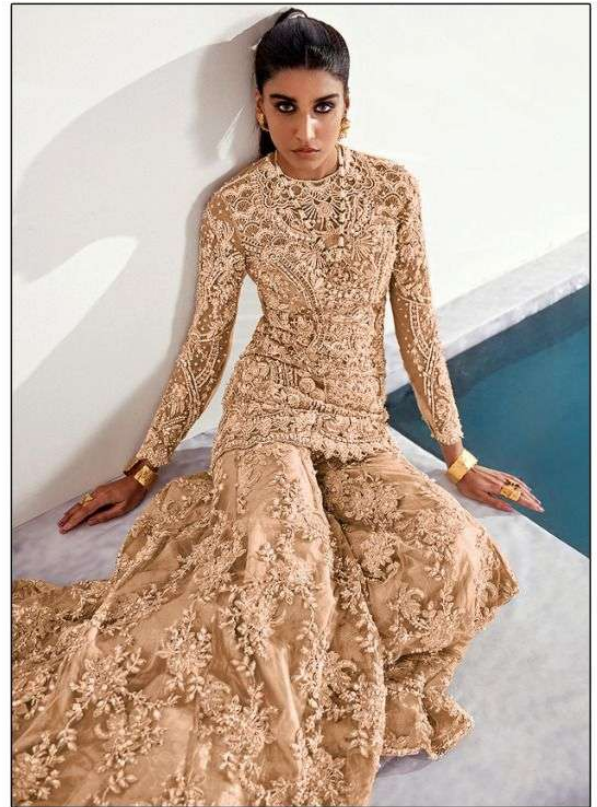




ZARQASH  
D.NO.2-2052 B

FOR ALL YOUR SPECIAL OCCASIONS  
CONTACT US AT 011-26101010  
WWW.ZARQASH.COM





**TOP - BUTTERFLY NET HEAVY EMBROIDERED UNSTITCH**  
**T/B INNER - HEAVY SANTOON**  
**BOTTOM - BUTTERFLY NET HEAVY EMBROIDERED**  
**DUPATTA - BUTTERFLY NET HEAVY EMBROIDERED**

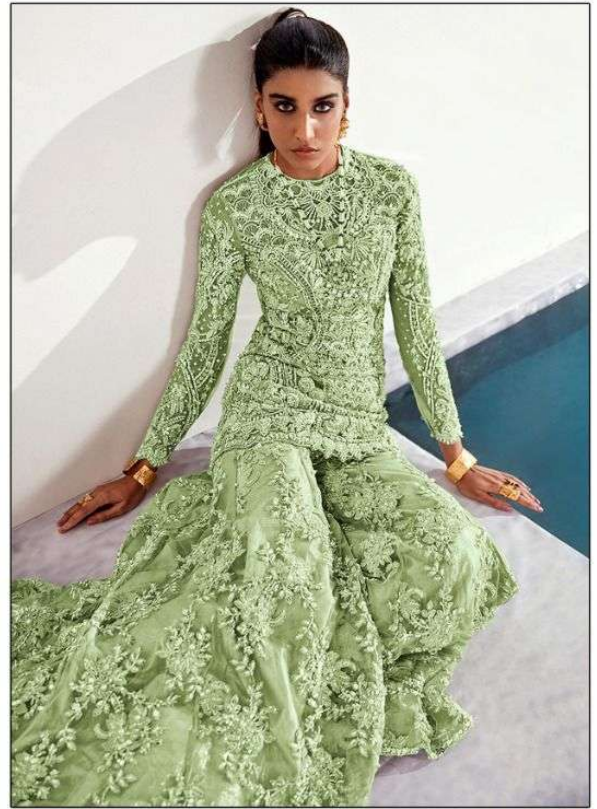




ZARQASH  
D.NO.2.2012 C

Two photographs of a woman wearing the green embroidered dress, one in a full-length view and one in a three-quarter view.





**TOP - BUTTERFLY NET HEAVY EMBROIDERED UNSTITCH**  
**T/B INNER - HEAVY SANTOON**  
**BOTTOM - BUTTERFLY NET HEAVY EMBROIDERED**  
**DUPATTA - BUTTERFLY NET HEAVY EMBROIDERED**









**TOP - BUTTERFLY NET HEAVY EMBROIDERED UNSTITCH**  
**T/B INNER - HEAVY SANTOON**  
**BOTTOM - BUTTERFLY NET HEAVY EMBROIDERED**  
**DUPATTA - BUTTERFLY NET HEAVY EMBROIDERED**









**TOP - BUTTERFLY NET HEAVY EMBROIDERED UNSTITCH**  
**T/B INNER - HEAVY SANTOON**  
**BOTTOM - BUTTERFLY NET HEAVY EMBROIDERED**  
**DUPATTA - BUTTERFLY NET HEAVY EMBROIDERED**