

16325

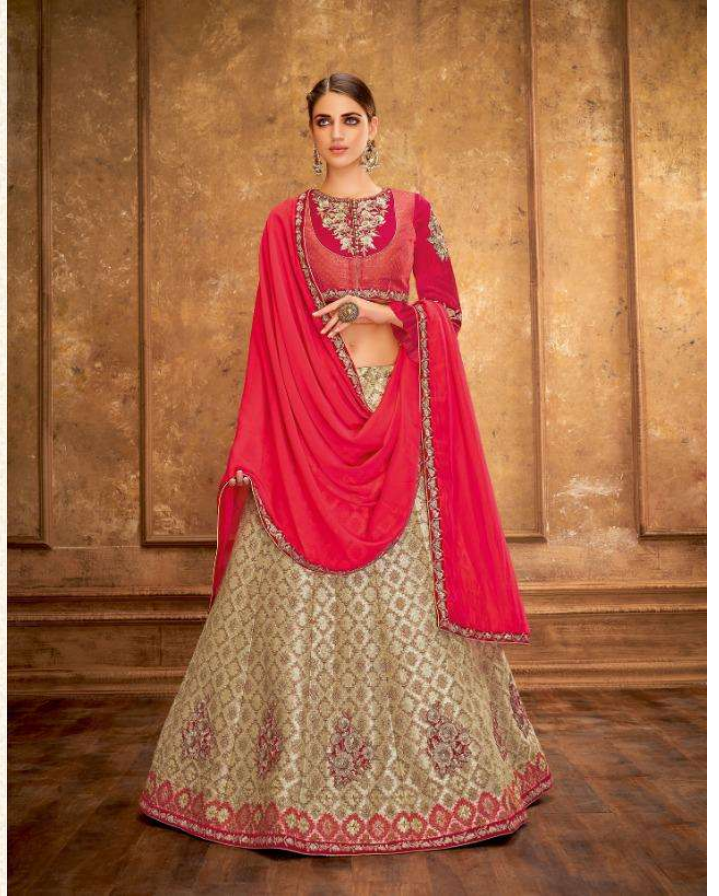
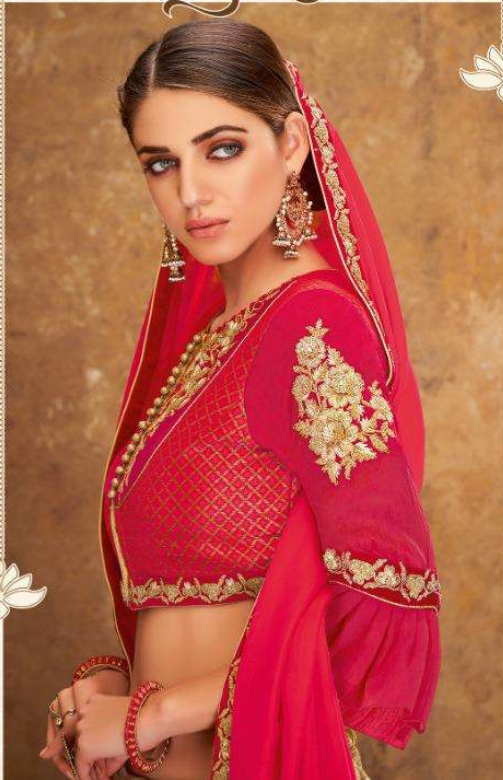
यशोधरा

The glorious pigment of midnight blue is ultra-glamorous statement to make.



16322

श्यामला
*Live your big classic-style
moment in timeless brocade.*



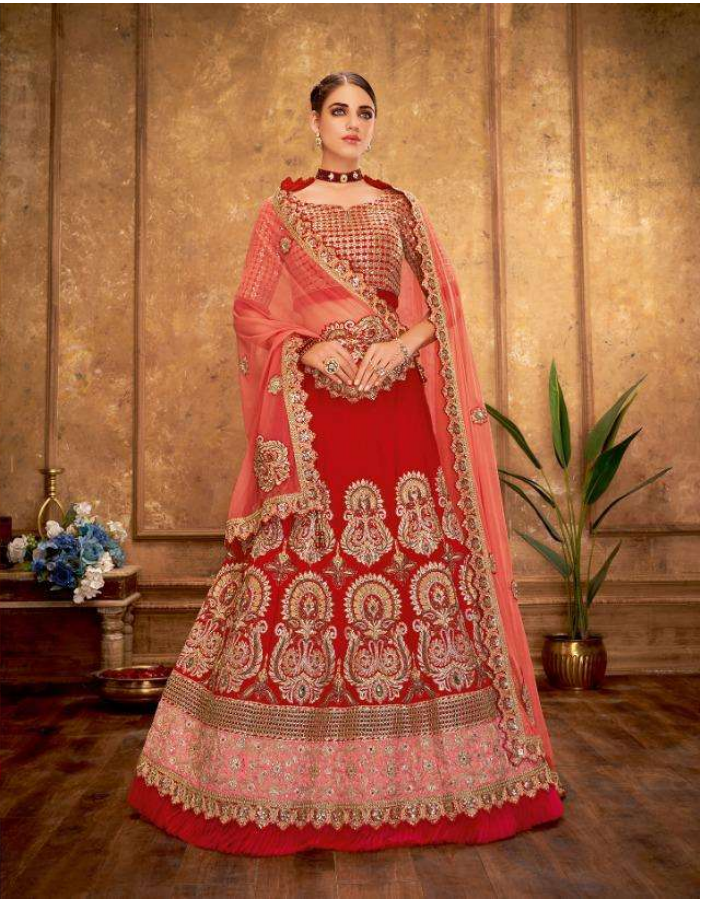
NOTE : 12% GST WILL BE CHARGED EXTRA ON THE BELOW PRICES

MOHMAYAA 16300 :						
DESIGN NO	RATE	LEHENGA FABRIC	BLOUSE FABRIC	DUPATTA FABRIC	LEHENGA WORK	Z.(SEMISTITCH/UN-ST
16312	4795	Fancy jacquard, Net	velvet	Net	Cord and sequins embroidery	UN-stitched
16316	4105	Silk	Silk	Net	Zari, cord and sequins embroidery, hand work	UN-stitched
16320	6305	Net	Satin Silk	Net	Cord and zari embroidery	UN-stitched
16322	4685	Weaved Silk	Brocade, velvet	Dual tone silk georgette	Zaord , sequins and zari embroidery	UN-stitched
16325	5615	Taffeta Silk	Taffeta Silk	Net	Cord embroidery, handwork	UN-stitched
16326	4205	Raw silk	velvet	Net	zari and cord embroidery	UN-stitched
16328	4105	Weaved Silk	Raw Silk	Net	Zari and cord embroidery, hand work	UN-stitched
16329	4195	Net	Raw Silk	Net	Thread, zari and cord embroidery	UN-stitched
16330	4205	Weaved Silk	Raw Silk	Net	Cord, zari and sequins embroidery , handwork	UN-stitched
16332	5255	Raw silk	Raw Silk	Net	Zari and cord embroidery, hand work	UN-stitched

16316

आभरुहा

*Dipped in a deluge of love and romance,
the classic red lehenga is one to count on.*



16320



काविशा

*A fine, delicate and detailed excess of embroidery
is nothing less than a poetry.*



16330



चित्रांगी

*Narrating the story of yesteryears and
emitting the charm of modern days.*



16312



अद्वका

The abstract musings in a delightful combinations just became real!



16332



अनुरूप

*Dripping in the vivid hue of culture and
soaking the contemporary feel.*



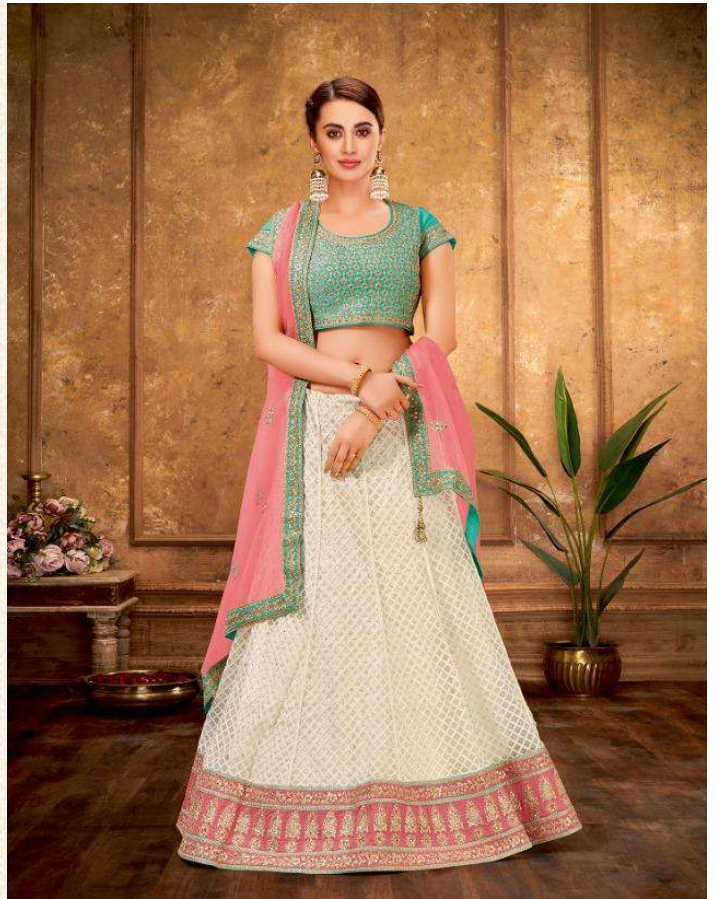
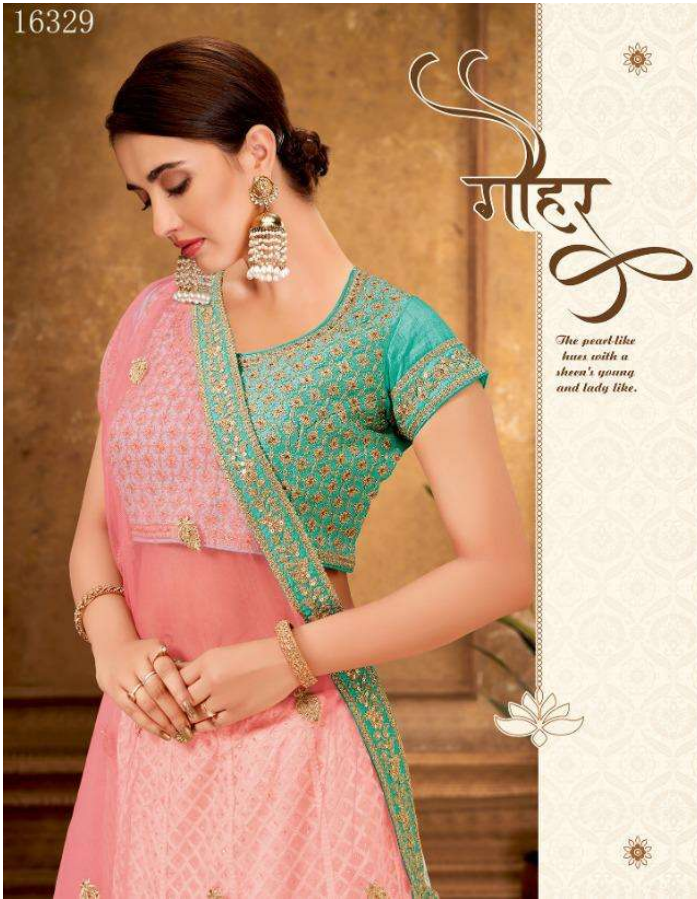
16326

हिथीका

The traditional adorned on classic blue is an endearing combination.



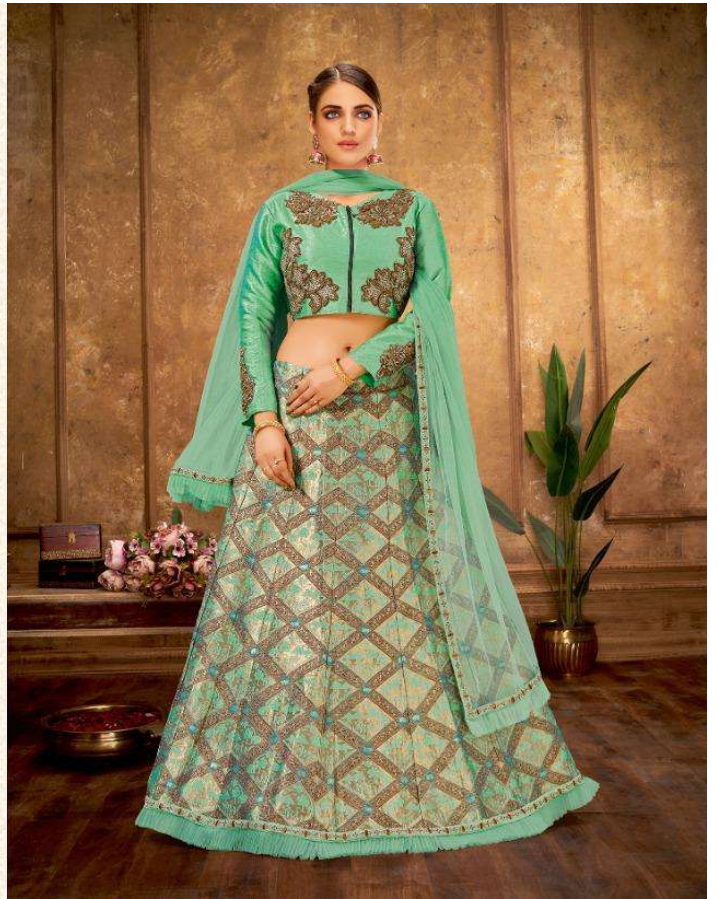
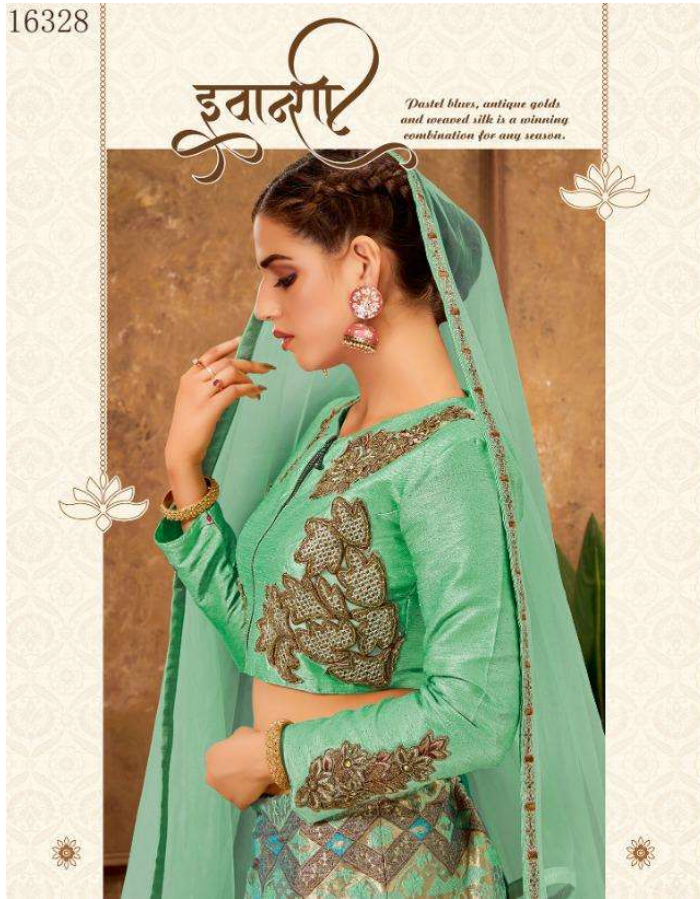
16329



16328

इवादा

Dusht blues, antique golds and weaved silk is a winning combination for any season.



16325

यशोधरा

The glorious pigment of midnight blue is ultra-glamorous statement to make.

