



#R-391

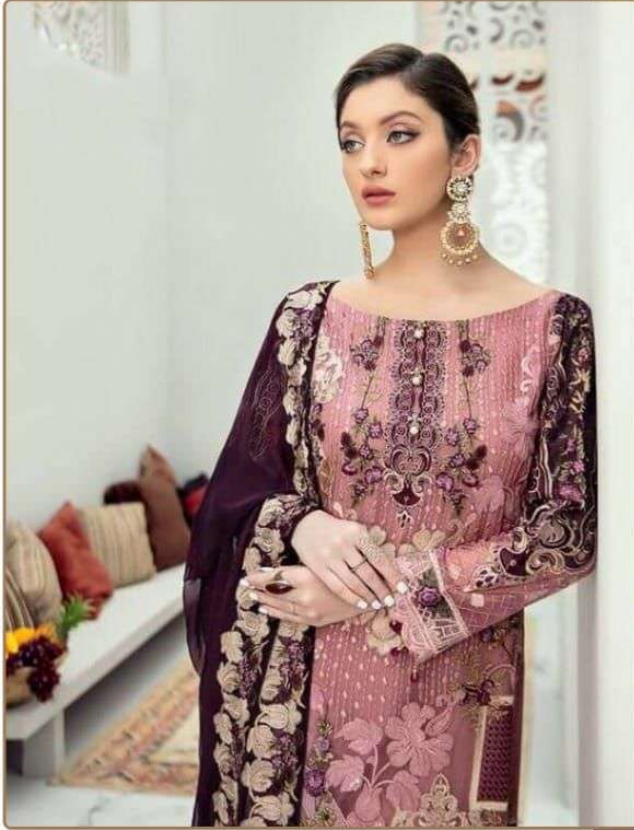


TOP- FOX GEORGET WITH HEAVY EMBROIDERY  
BOTTOM- DULL SANTOON  
DUPATTA - NAZMEEN WITH HEAVY EMBROIDERY

- Ⓟ DRY CLEAN ONLY.
- ✘ DO NOT USE ANY BLEACH OR STAIN REMOVING CHEMICAL.
- ☎ IRON THE FABRIC AT MODERATE TEMPERATURE.



#R-391



TOP- FOX GEORGET WITH HEAVY EMBROIDERY  
BOTTOM- DULL SANTOON  
DUPATTA - NAZMEEN WITH HEAVY EMBROIDERY

- Ⓟ DRY CLEAN ONLY.
- ✘ DO NOT USE ANY BLEACH OR STAIN REMOVING CHEMICAL.
- ☎ IRON THE FABRIC AT MODERATE TEMPERATURE.





#R-393



TOP- FOX GEORGET WITH HEAVY EMBROIDERY  
BOTTOM- DULL SANTOON  
DUPATTA - NAZMEEN WITH HEAVY EMBROIDERY

- Ⓟ DRY CLEAN ONLY.
- ✘ DO NOT USE ANY BLEACH OR STAIN REMOVING CHEMICAL.
- ☎ IRON THE FABRIC AT MODERATE TEMPERATURE.

  
Ramsha®

#R-394



TOP- FOX GEORGET WITH HEAVY EMBROIDERY  
BOTTOM- DULL SANTOON  
DUPATTA - NAZMEEN WITH HEAVY EMBROIDERY

Ⓟ DRY CLEAN ONLY.  
ⓧ DO NOT USE ANY BLEACH OR STAIN REMOVING CHEMICAL.  
Ⓡ IRON THE FABRIC AT MODERATE TEMPERATURE.





#R-392



**TOP**- FOX GEORGET WITH HEAVY EMBROIDERY  
**BOTTOM**- DULL SANTOON  
**DUPATTA** - NAZMEEN WITH HEAVY EMBROIDERY

- Ⓟ DRY CLEAN ONLY.
- ✘ DO NOT USE ANY BLEACH OR STAIN REMOVING CHEMICAL.
- ☎ IRON THE FABRIC AT MODERATE TEMPERATURE.





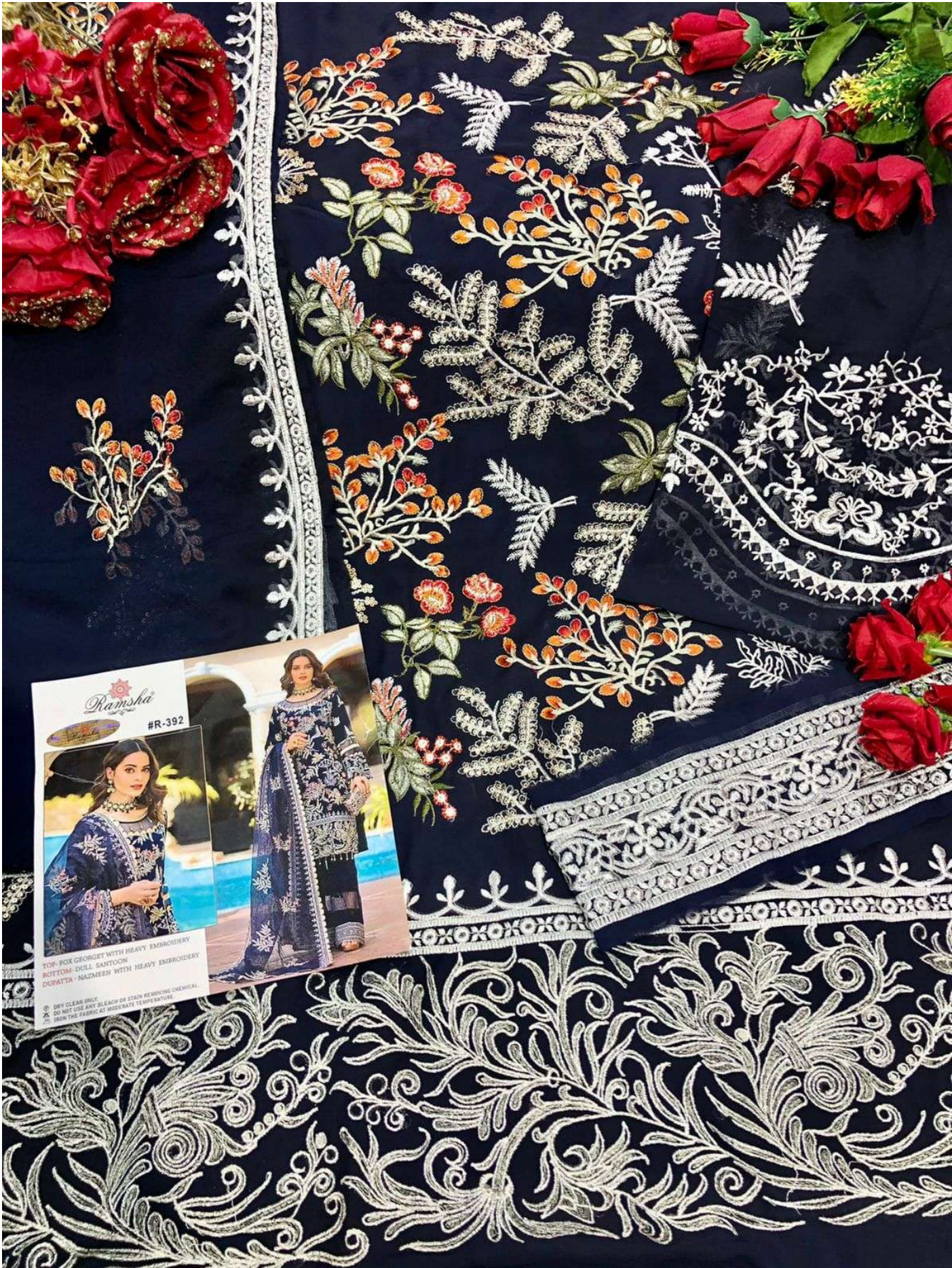
*Ramsha*  
#R-391



TOP- FOX GEORGET WITH HEAVY EMBROIDERY  
BOTTOM- DULL SANTOON  
DURAZA - NAZMEEN WITH HEAVY EMBROIDERY

☐ DRY CLEAN ONLY  
☒ DO NOT USE ANY BLEACH OR STAIN REMOVER  
☒ WASH FABRIC AT MEDIUM TO SOFT TEMPERATURE





*Ramsha*  
#R-392

TOP- FOX FLOWER WITH HEAVY EMBROIDERY  
BOTTOM- DOLL SANTOON  
DUPATTA- NAZMEEN WITH HEAVY EMBROIDERY

☞ DRY CLEAN ONLY  
☞ DO NOT USE ANY BLEACH OR STAIN REMOVING CHEMICAL  
☞ IRON THE FABRIC AT MEDIUM TEMPERATURE





amsha

#R-393



WITH HEAVY EMBROIDERY  
WOOL  
WITH HEAVY EMBROIDERY  
WASH OR STAIN REMOVING CHEMICAL  
HEAVY TEMPERATURE



Ramsha®  
VOL-30



#R-391



#R-392



#R-393



#R-394

Ramsha®  
VOL-30





Ramsha

#R-90



TOP- FOX GRONGET WITH HEAVY EMBROIDERY  
BOTTOM- DULL SANTOON  
DOPATTA- NAZMEEN WITH HEAVY EMBROIDERY

1. DRY CLEAN ONLY  
2. DO NOT USE ANY BLEACH OR STAIN REMOVING CHEMICAL  
3. IRON THE FABRIC AT MEDIUM TEMPERATURE