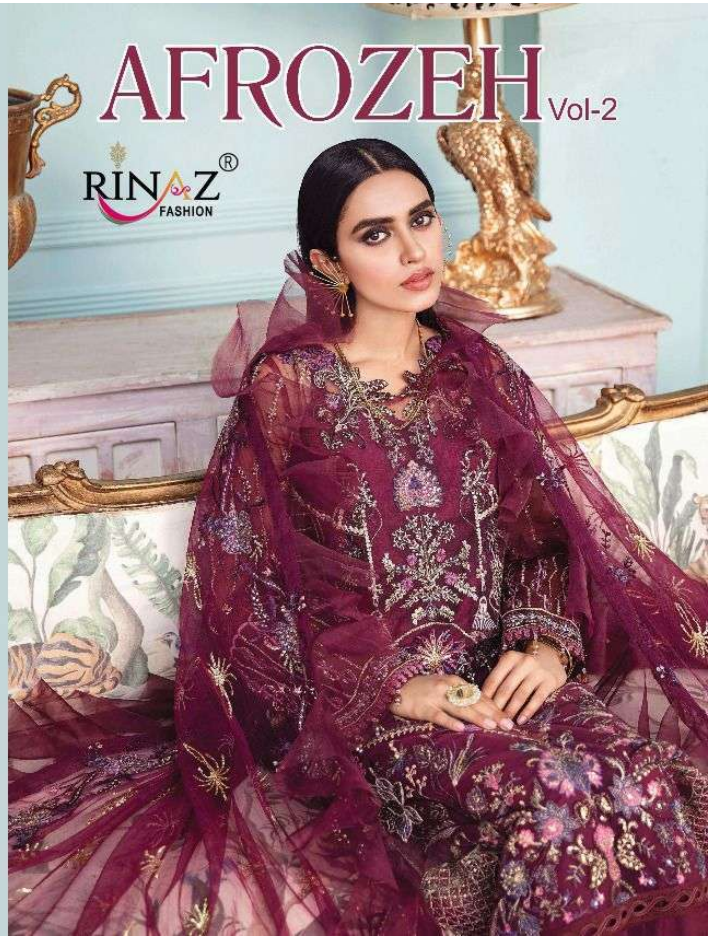


AFROZEH Vol-2



email: rinazfashion662@gmail.com

complimentary copy, not for sale



RINAZ[®]
FASHION



WASHING INSTRUCTIONS

DO NOT USE ANY TYPE OF BLEACH OR STAIN REMOVING CHEMICALS
BEFORE CUTTING / STITCHING. FABRIC SHOULD BE SOAKED IN WATER
(ALL COMPONENTS SEPARATELY) FOR 15 MINUTES
DO NOT KEEP WET FABRIC IN TWISTED FORM IN ORDER TO AVOID COPY MARKS !
WASH COLOURED AND WHITE FABRICS SEPARATELY
IRON CLOTHES AT MODERATE TEMPERATURE ! DO NOT DRY FABRIC IN DIRECT SUNLIGHT
(EXTRA LACES , HANGING AND ACCESSORIES ARE NOT INCLUDED)

TOP - FOX GEORGETTE WITH HEAVY
EMBROIDERY & DIAMOND WORK

BOTTOM+INNER - HEAVY SHANTUN

DUPATTA - BUTTERFLY NET WITH
HEAVY EMBROIDERY

AFROZEH

Vol-2

D.NO.8204

RINAZ[®]
FASHION



WASHING INSTRUCTIONS

DO NOT USE ANY TYPE OF BLEACH OR STAIN REMOVING CHEMICALS
BEFORE CUTTING / STITCHING. FABRIC SHOULD BE SOAKED IN WATER
(ALL COMPONENTS SEPARATELY) FOR 15 MINUTES
DO NOT KEEP WET FABRIC IN TWISTED FORM IN ORDER TO AVOID COPY MARKS!
WASH COLOURED AND WHITE FABRICS SEPARATELY
IRON CLOTHES AT MODERATE TEMPERATURE! DO NOT DRY FABRIC IN DIRECT SUNLIGHT
(EXTRA LACES, HANGING AND ACCESSORIES ARE NOT INCLUDED)

TOP - FOX GEORGETTE WITH HEAVY
EMBROIDERY & DIAMOND WORK
BOTTOM+INNER - HEAVY SHANTUN
DUPATTA - BUTTERFLY NET WITH
HEAVY EMBROIDERY

AFROZEH

Vol-2

D.NO.8202



RINAZ[®]
FASHION

WASHING INSTRUCTIONS

DO NOT USE ANY TYPE OF BLEACH OR STAIN REMOVING CHEMICALS
BEFORE CUTTING / STITCHING. FABRIC SHOULD BE SOAKED IN WATER
(ALL COMPONENTS SEPARATELY) FOR 15 MINUTES
DO NOT KEEP WET FABRIC IN TWISTED FORM IN ORDER TO AVOID COPY MKRS !
WASH COLOURED AND WHITE FABRICS SEPARATELY
IRON CLOTHES AT MODERATE TEMPERATURE ! DO NOT DRY FABRIC IN DIRECT SUNLIGHT
(EXTRA LACES , HANGING AND ACCESSORIES ARE NOT INLUDED)

TOP - FOX GEORGETTE WITH HEAVY
EMBROIDERY & DIAMOND WORK

BOTTOM+INNER - HEAVY SHANTUN

DUPATTA - BUTTERFLY NET WITH
HEAVY EMBROIDERY

AFROZEH

Vol-2

D.NO.8205





D.No.	TOP	BOTTOM + INNER	DUPATTA
8201	FOX JORGET WITH HEAVY EMBROIDERY & DIMOND WORK	HEAVY SHANTUN	BUTERFLY NET WITH HEAVY EMBROIDERY
8202	FOX JORGET WITH HEAVY EMBROIDERY & DIMOND WORK	HEAVY SHANTUN	BUTERFLY NET WITH HEAVY EMBROIDERY
8203	FOX JORGET WITH HEAVY EMBROIDERY & DIMOND WORK	HEAVY SHANTUN	BUTERFLY NET WITH HEAVY EMBROIDERY
8204	FOX JORGET WITH HEAVY EMBROIDERY & DIMOND WORK	HEAVY SHANTUN	BUTERFLY NET WITH HEAVY EMBROIDERY
8205	FOX JORGET WITH HEAVY EMBROIDERY & DIMOND WORK	HEAVY SHANTUN	BUTERFLY NET WITH HEAVY EMBROIDERY

*NOTE : Rate 1299 + GST Extra.



RINAZ[®]
FASHION

WASHING INSTRUCTIONS
 DO NOT USE ANY TYPE OF BLEACH OR STAIN REMOVING CHEMICALS
 BEFORE CUTTING / STITCHING. FABRIC SHOULD BE SOAKED IN WATER
 (ALL COMPONENTS SEPARATELY) FOR 15 MINUTES
 DO NOT KEEP WET FABRIC IN TWISTED FORM IN ORDER TO AVOID COPY MKRS !
 WASH COLOURED AND WHITE FABRICS SEPARATELY
 IRON CLOTHES AT MODERATE TEMPERATURE ! DO NOT DRY FABRIC IN DIRECT SUNLIGHT
 (EXTRA LACES , HANGING AND ACCESSORIES ARE NOT INLUDED)

TOP - FOX GEORGETTE WITH HEAVY
 EMBROIDERY & DIAMOND WORK
 BOTTOM+INNER - HEAVY SHANTUN
 DUPATTA - BUTTERFLY NET WITH
 HEAVY EMBROIDERY

AFROZEH

Vol-2

D.NO.8201



RINAZ[®]
FASHION

WASHING INSTRUCTIONS

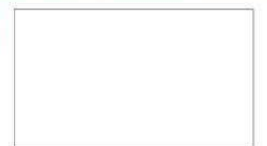
DO NOT USE ANY TYPE OF BLEACH OR STAIN REMOVING CHEMICALS
BEFORE CUTTING / STITCHING. FABRIC SHOULD BE SOAKED IN WATER
(ALL COMPONENTS SEPARATELY) FOR 15 MINUTES
DO NOT KEEP WET FABRIC IN TWISTED FORM IN ORDER TO AVOID COPY MARKS !
WASH COLOURED AND WHITE FABRICS SEPARATELY
IRON CLOTHES AT MODERATE TEMPERATURE ! DO NOT DRY FABRIC IN DIRECT SUNLIGHT
(EXTRA LACES , HANGING AND ACCESSORIES ARE NOT INCLUDED)

TOP - FOX GEORGETTE WITH HEAVY
EMBROIDERY & DIAMOND WORK
BOTTOM+INNER - HEAVY SHANTUN
DUPATTA - BUTTERFLY NET WITH
HEAVY EMBROIDERY

AFROZEH

Vol-2

D.NO.8203





D.No. 8201

D.No. 8202

D.No. 8203



D.No. 8204

D.No. 8205



AFROZEH Vol-2



email: rinazfashion662@gmail.com

complimentary copy, not for sale

