

Fepic®

*Maria B*  
*embroide-3*





**Epic**<sup>®</sup>

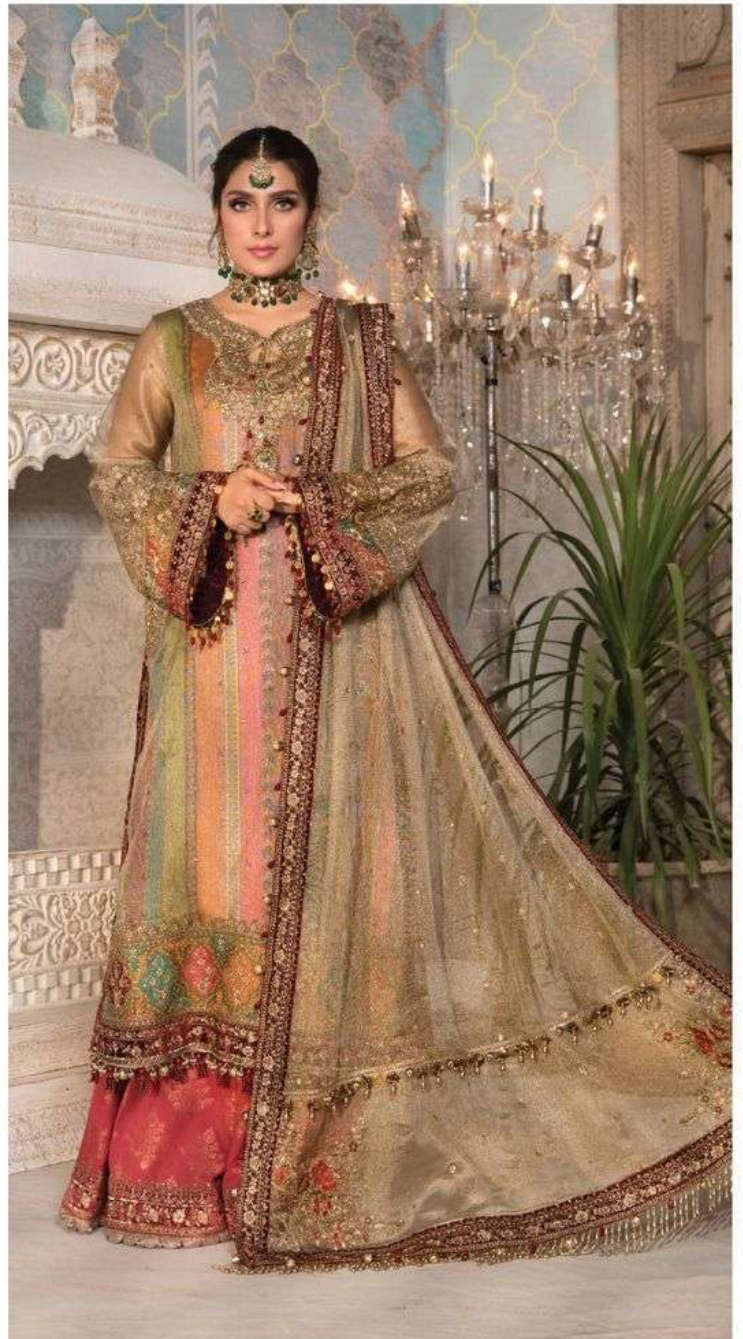


**WASHING INTRUCTIONS**

DO NOT USE ANY TYPE OF BLEACH OR STAIN REMOVING CHEMICALS  
BEFORE CUTTING / STITCHING, FABRIC SHOULD BE SOAKED BE SOAKED IN WATER  
( ALL COMPONENTS SEPARATELY ) FOR 15 MINUTES  
DO NOT KEEP WET FABRIC IN TWISTED FROM IN ORDER TO AVOID COPY MARKS |  
WASH COLOURED AND WHITE FABRICS SEPARATELY  
IRON CLOTHES AT MODERATE TEMPERATURE | DO NOT DRY FABRIC IN DIRECT SUNLIGHT  
( EXTRA LACES, HANGINGS AND ACCESSORIES ARE NOT INDUDED )

D.NO.60013

*Maria B*  
embroide-3





**Epic**<sup>®</sup>



**WASHING INTRUCTIONS**

DO NOT USE ANY TYPE OF BLEACH OR STAIN REMOVING CHEMICALS  
BEFORE CUTTING / STITCHING, FABRIC SHOULD BE SOAKED BE SOAKED IN WATER  
( ALL COMPONENTS SEPARATELY ) FOR 15 MINUTES  
DO NOT KEEP WET FABRIC IN TWISTED FROM IN ORDER TO AVOID COPY MARKS |  
WASH COLOURED AND WHITE FABRICS SEPARATELY  
IRON CLOTHES AT MODERATE TEMPERATURE | DO NOT DRY FABRIC IN DIRECT SUNLIGHT  
( EXTRA LACES, HANGINGS AND ACCESSORIES ARE NOT INDUDED )

D.NO.60011

*Maria B*  
embroide-3





Epic®



WASHING INTRUCTIONS

DO NOT USE ANY TYPE OF BLEACH OR STAIN REMOVING CHEMICALS  
BEFORE CUTTING / STITCHING, FABRIC SHOULD BE SOAKED BE SOAKED IN WATER  
( ALL COMPONENTS SEPARATELY ) FOR 15 MINUTES  
DO NOT KEEP WET FABRIC IN TWISTED FROM IN ORDER TO AVOID COPY MARKS |  
WASH COLOURED AND WHITE FABRICS SEPARATELY  
IRON CLOTHES AT MODERATE TEMPERATURE | DO NOT DRY FABRIC IN DIRECT SUNLIGHT  
( EXTRA LACES, HANGINGS AND ACCESSORIES ARE NOT INDUDED )

D.NO.60012

*Maria B*  
embroide-3





**Epic**<sup>®</sup>

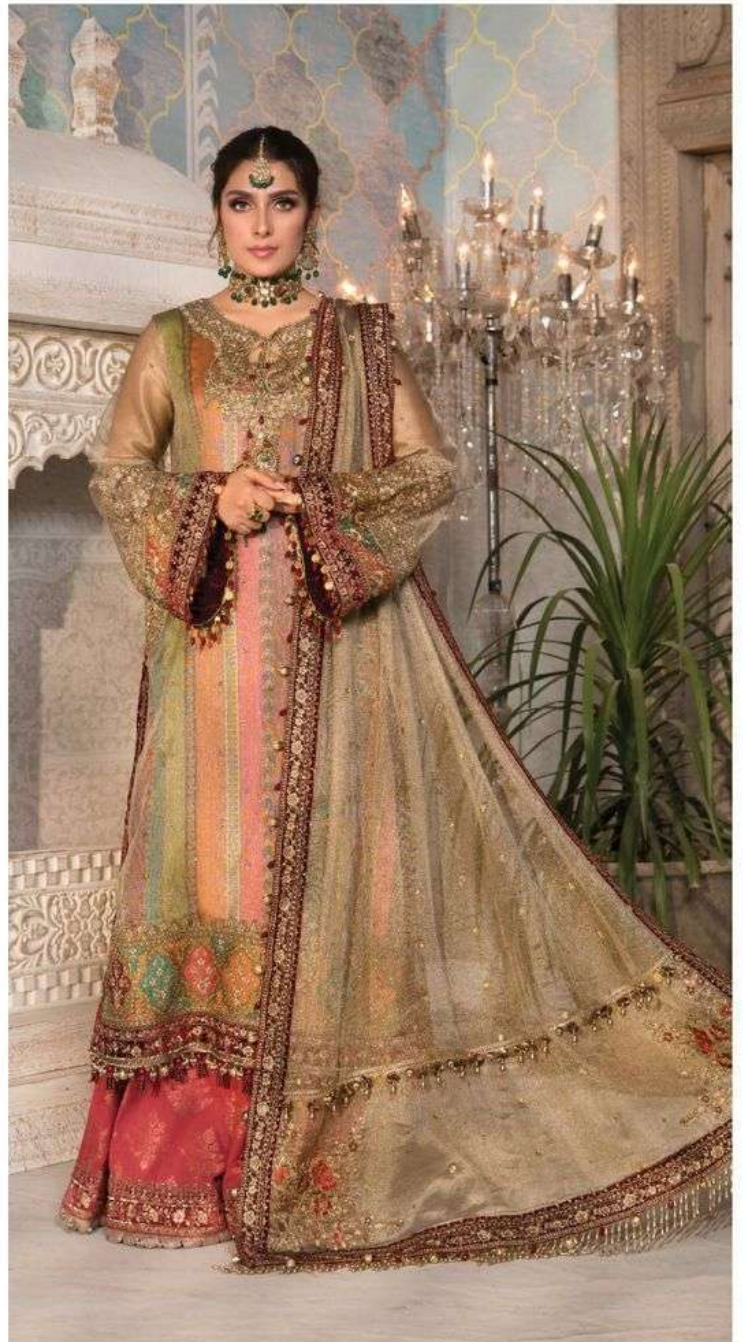


**WASHING INTRUCTIONS**

DO NOT USE ANY TYPE OF BLEACH OR STAIN REMOVING CHEMICALS  
BEFORE CUTTING / STITCHING, FABRIC SHOULD BE SOAKED BE SOAKED IN WATER  
( ALL COMPONENTS SEPARATELY ) FOR 15 MINUTES  
DO NOT KEEP WET FABRIC IN TWISTED FROM IN ORDER TO AVOID COPY MARKS |  
WASH COLOURED AND WHITE FABRICS SEPARATELY  
IRON CLOTHES AT MODERATE TEMPERATURE | DO NOT DRY FABRIC IN DIRECT SUNLIGHT  
( EXTRA LACES, HANGINGS AND ACCESSORIES ARE NOT INDUDED )

D.NO.60013

*Maria B*  
embroide-3





**Epic**<sup>®</sup>



**WASHING INTRUCTIONS**

DO NOT USE ANY TYPE OF BLEACH OR STAIN REMOVING CHEMICALS  
BEFORE CUTTING / STITCHING, FABRIC SHOULD BE SOAKED BE SOAKED IN WATER  
( ALL COMPONENTS SEPARATELY ) FOR 15 MINUTES  
DO NOT KEEP WET FABRIC IN TWISTED FROM IN ORDER TO AVOID COPY MARKS |  
WASH COLOURED AND WHITE FABRICS SEPARATELY  
IRON CLOTHES AT MODERATE TEMPERATURE | DO NOT DRY FABRIC IN DIRECT SUNLIGHT  
( EXTRA LACES, HANGINGS AND ACCESSORIES ARE NOT INDUDED )

D.NO.60010

*Maria B*  
embroide-3







**Fepic**<sup>®</sup>

*Maria B*  
*embroide-3*

 : Fepic  : Fb.com/Fepic11



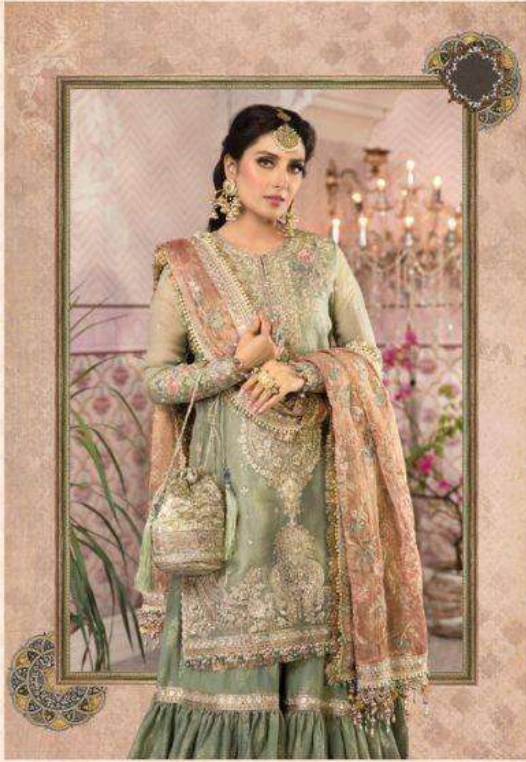


Fepic®

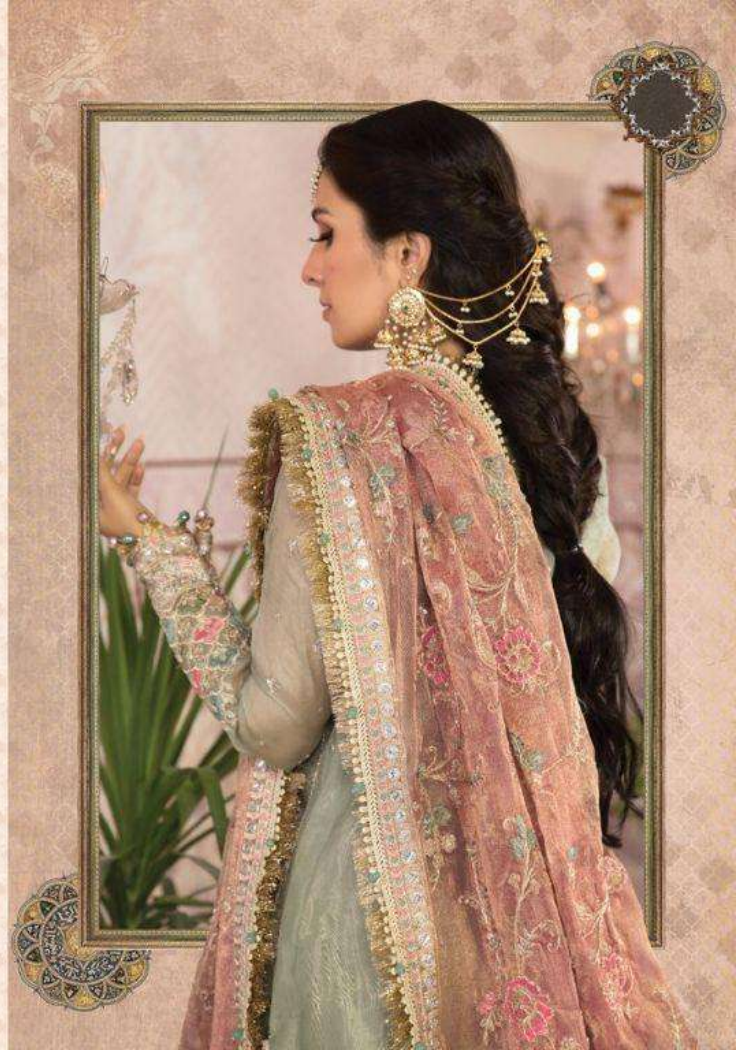
Maria B  
embroide-3

Instagram: @\_Fepic Facebook: Fb.com/Fepic11





**Fepic**<sup>®</sup>  
*Maria B*  
embroide-3  
Instagram: Fepic Facebook: Fb.com/Fepic11





Fepic®

Maria B  
embroide-3

Instagram: @Fepic Facebook: fb.com/Fepic11





Fepic®



Maria B  
embroide-3

 [\\_fepic](#)  [:fb.com/fepic11](#)





**Epic**<sup>®</sup>



*Maria B*  
*embroide-3*





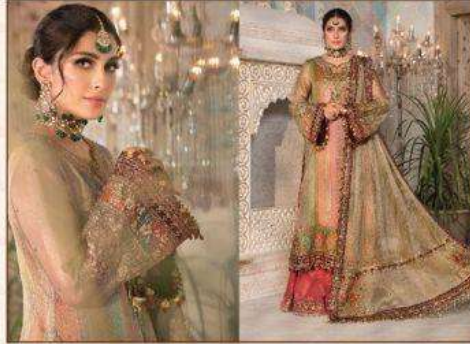
D.NO.60010



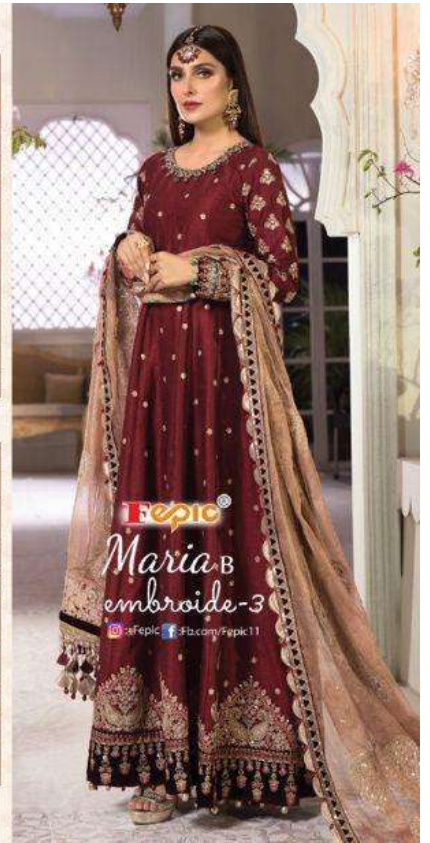
D.NO.60011



D.NO.60012



D.NO.60013





Fepic®

*Maria B*  
*embroide-3*





D.NO	TOP	BOTTOM	DUPATTA	CP
60010	FAUX GEORGETTE WITH PEARL WORK	DULL SANTOON	HEAVY EMBROIDE NET	1349
60011	PURE ORGANZA WITH HEAVY HANDWORK	HEAVY EMBROIDE NET	HEAVY EMBROIDE NET	1759
60012	BUTTERFLY NET	DULL SANTOON	EMBROIDE NET	1349
60013	BUTTERFLY NET WITH HANDWORK & PEARL WORK ( INNER DIGITAL )	DULL SANTOON	NET WITH PEARL WORK	1399
AVG RATE - 1459				



*Maria B*  
embroide-3

:\_Fepic

:Fb.com/Fepic11