


RELISSA
INDIA



A woman is standing in a garden, wearing a beige saree with a floral pattern. The saree has a matching blouse with a buttoned placket. She is also wearing a matching beige dhoti. She has her hair pulled back and is wearing gold jewelry, including a necklace, earrings, a bangle, and a ring. The background features a stone pillar and green foliage.

RELISSA[®]
FABRICS

AARTHI-5

15008



RELISSA[®]
FABRICS

AARTHI-5

15006





RELISSA[®]
FABRICS

AARTHI-5

15004





RELISSA[®]
FABRICS

AARTHI-5

15002

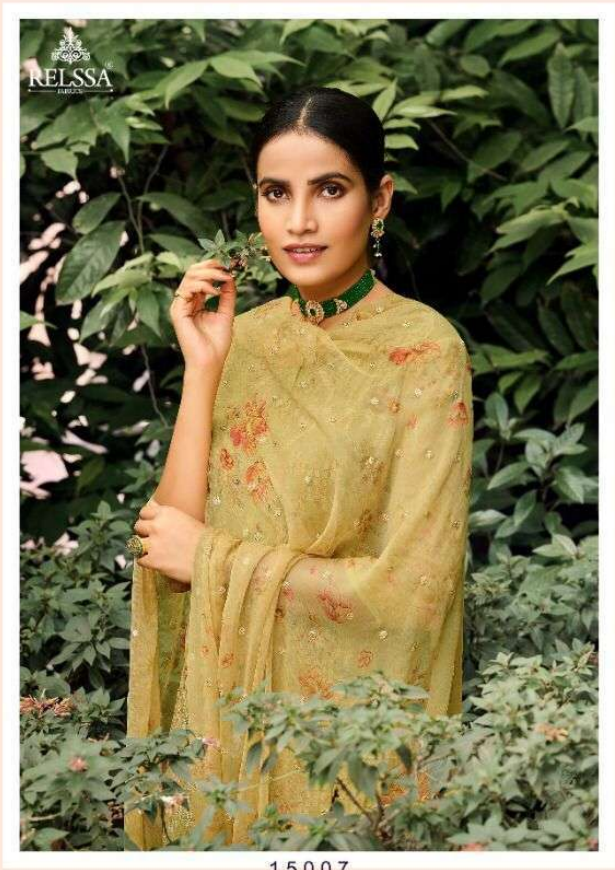



RELSSA[®]
FABRICS

AARTHI-5

15001





15007



AARTHI -5

RATE:1895/-

TOP

VISSCOSE GEORGET

EMBROIDERY WORK WITH DIGITAL PRINT

DUPATTA

PURE CHIFFON EMBROIDERY WORK WITH DIGITAL PRINT

BOTTOM INNER

SANTOON

DESIGN	PRODUCT NAME	HSN CODE
D.NO:-15001 TO 15008	AARTHI-5	540754
TOTAL SUITS	TOTAL AMOUNT	AVG.RATE
08	15160 /-	1895/-

BY;-RELSSA FABRICS (SAJJAN)


RELISSA[®]
FABRICS

AARTHI-5
15007









15006





RELISSA[®]
FABRICS

AARTHI-5

15003





RELISSA
BY
SANGHVI



15002





15001

15002

15003

15004



15005

15006

15007

15008





RELISSA[®]
FABRICS

AARTHI-5

15005




RELISSA
INDIA





RELISSA
AARTHI-5



15001



15002



15003



15004



15005



15006



15007



15008

