

A woman is the central figure, wearing a black saree with gold borders and a matching black blouse with gold diamond-shaped patterns. She is adorned with a large, ornate necklace featuring a central blue stone, a matching choker, large earrings, multiple bangles, and rings. Her hair is styled in a braid, and she has a soft expression. The background is a blurred outdoor setting with a building and a sky.

manjubaa<sup>®</sup>  
Maheen silk



A woman is the central figure, wearing a black saree with gold borders and a matching black blouse with gold diamond-shaped patterns. She is adorned with a large, ornate necklace featuring a central blue stone, multiple strands of pearls, and various gemstones. Her jewelry includes large blue and silver earrings, several silver bangles on her right wrist, a large silver ring on her left hand, and a small ring on her right hand. The background is a blurred outdoor setting with a building and a blue sky.

manjubaa®  
Maheen silk

manjubaa



5203



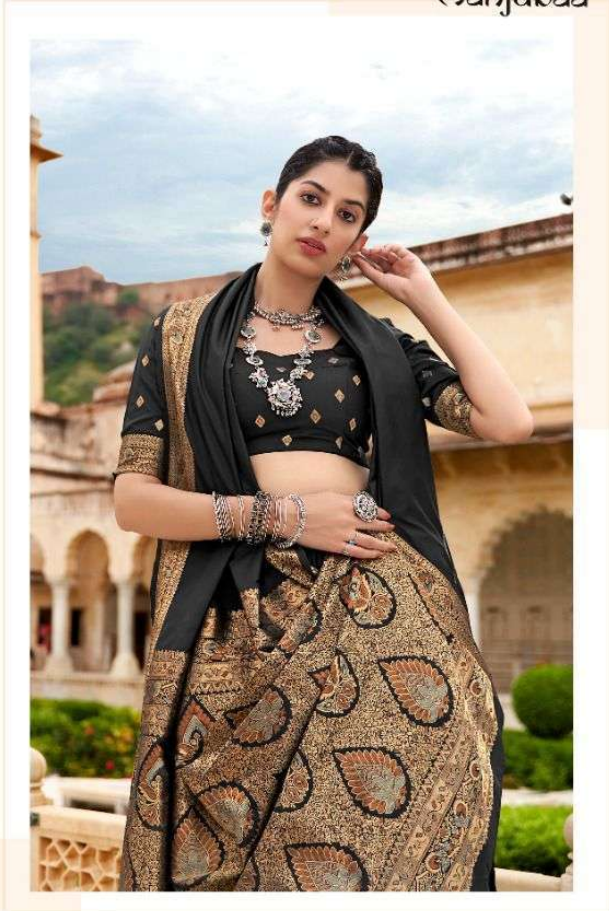


manjubaa



5204









5206



manjubaa





5201

5202

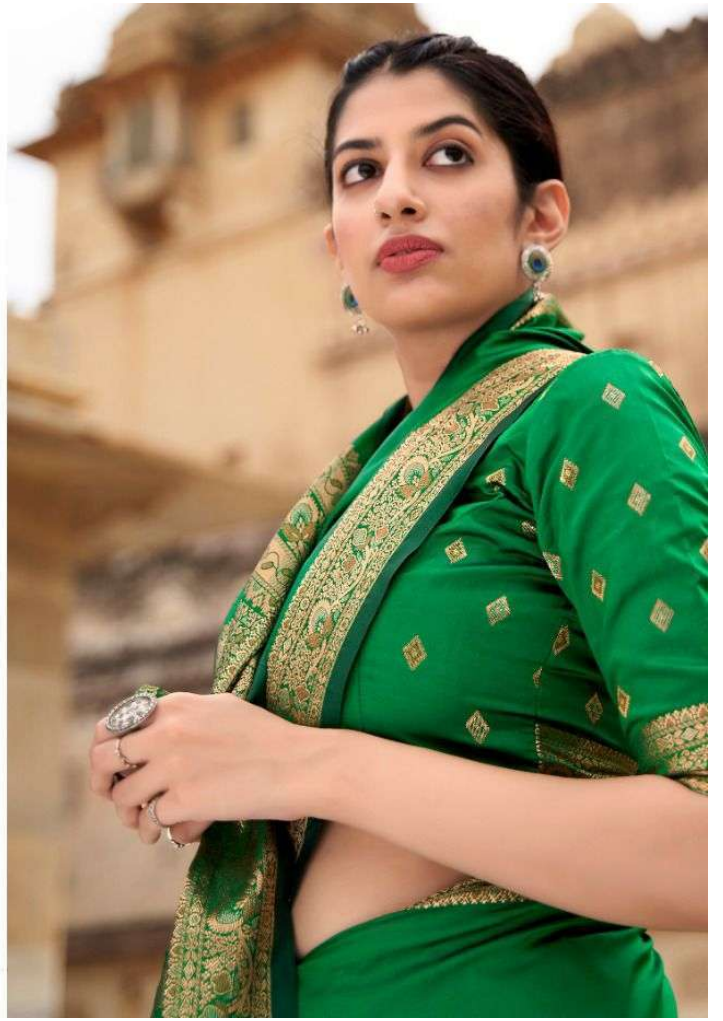
5203



5204

5205

5206







  
manjubaa®  
CLOTHING



manjubaa



5201



manjubaa



5202

