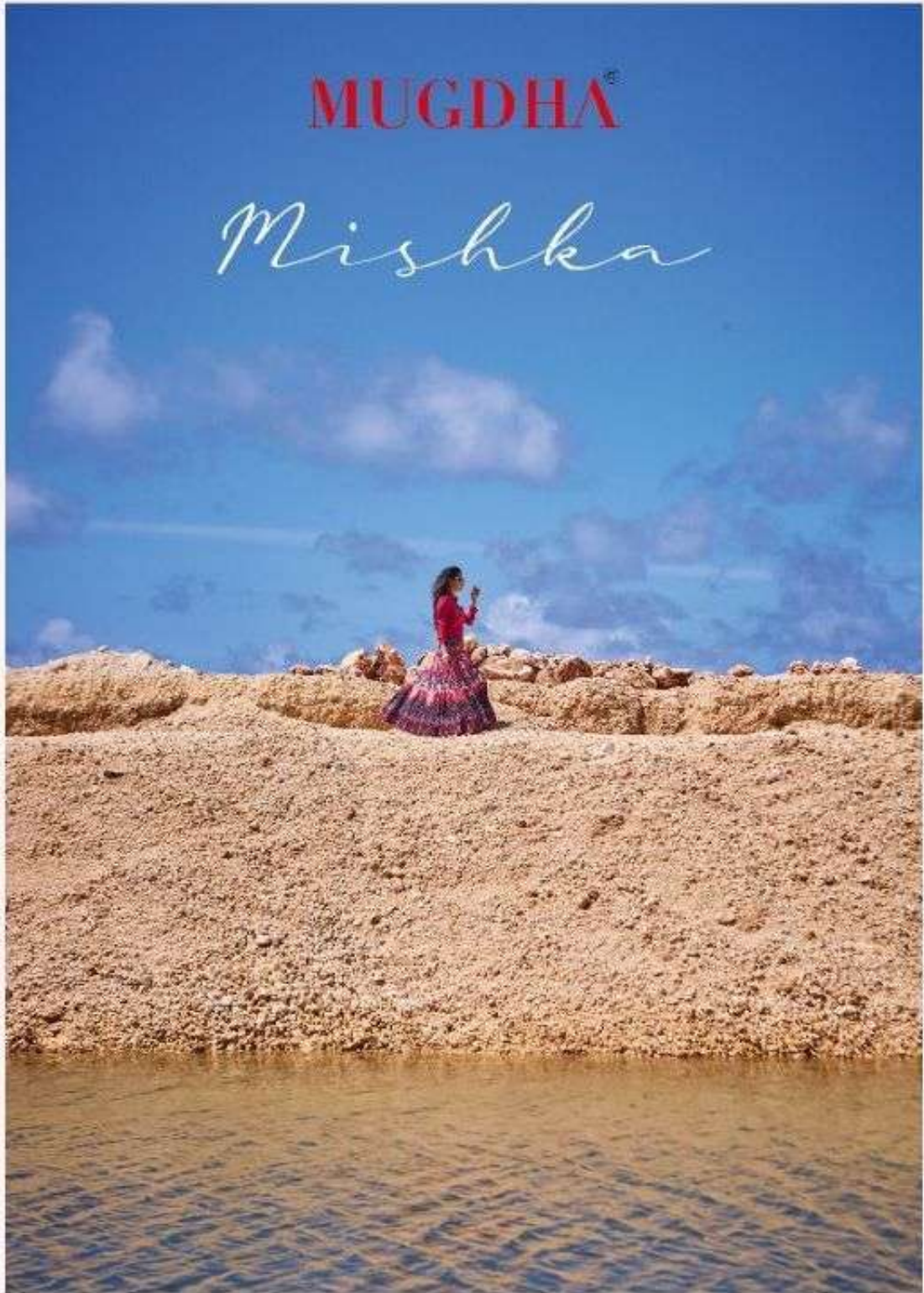


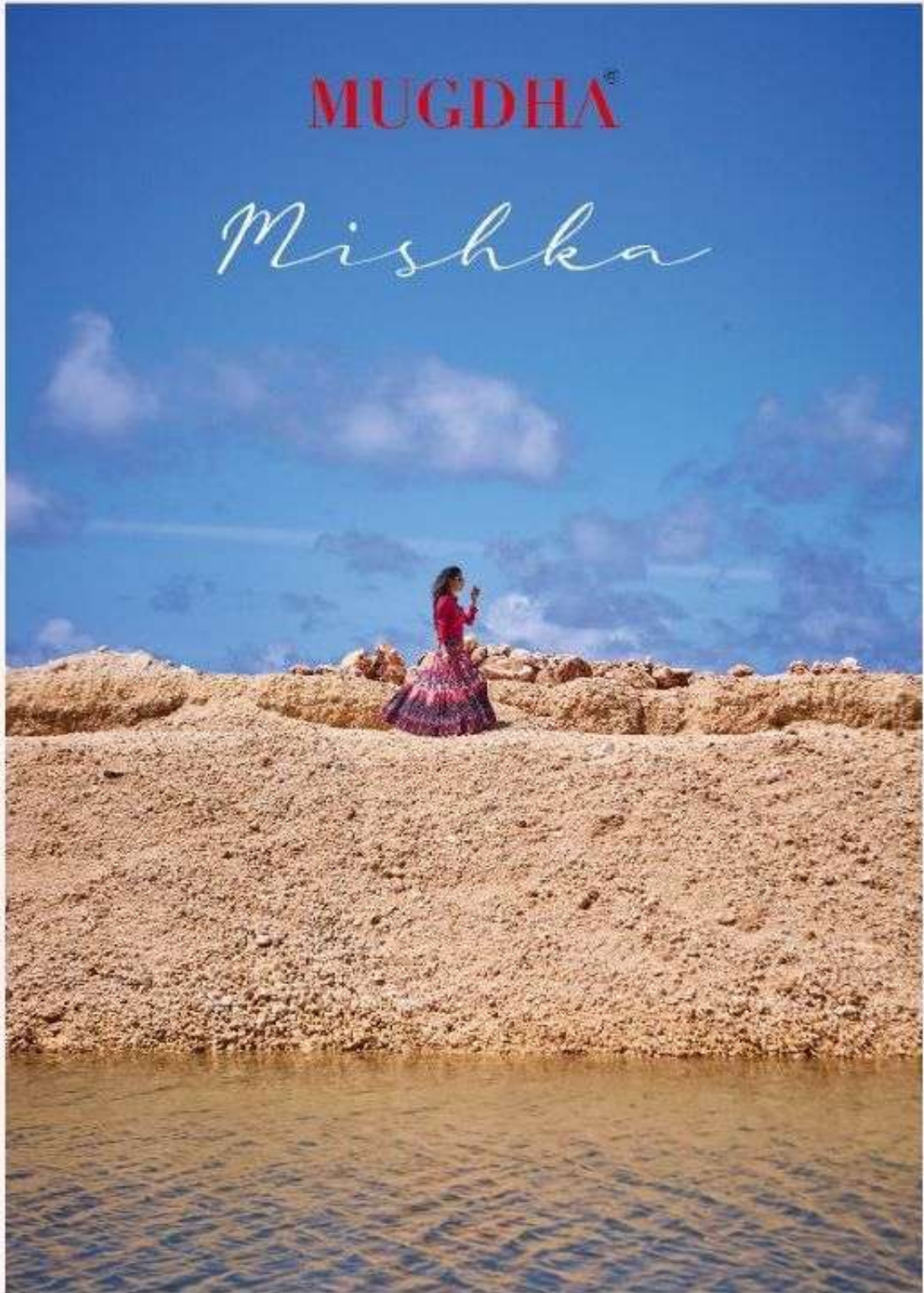
MUGDHA[®]

Mishka



MUGDHA[®]

Mishka



MUGDHA®



• 201 •





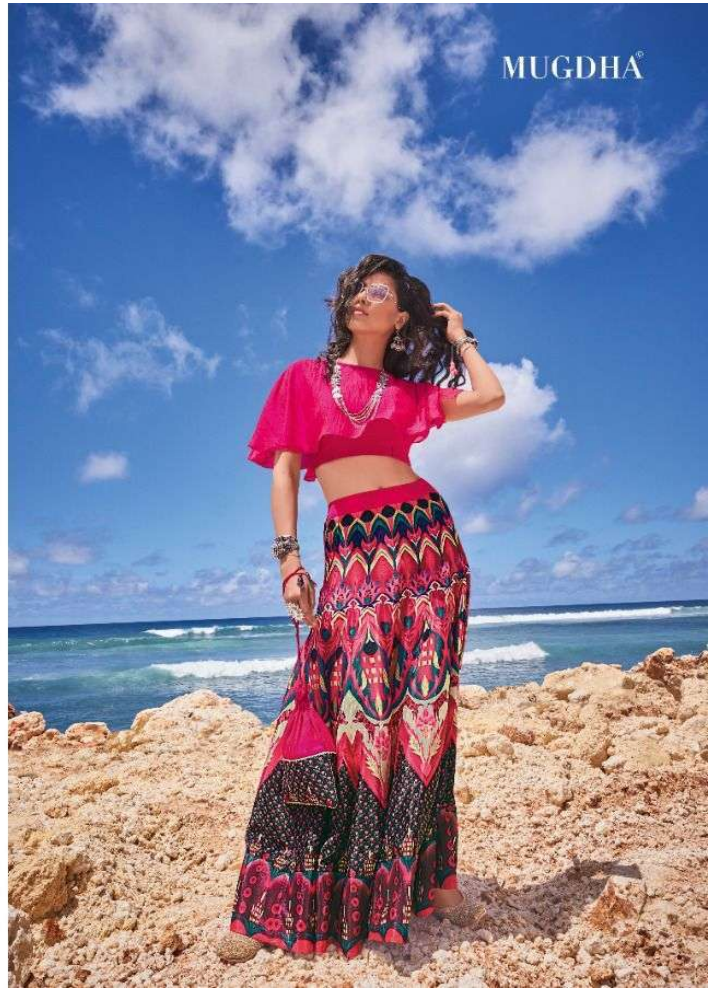
MUGDHA®

• 201 •





• 201 •





MUGDHA[®]
- 2022 -

MUGDHA

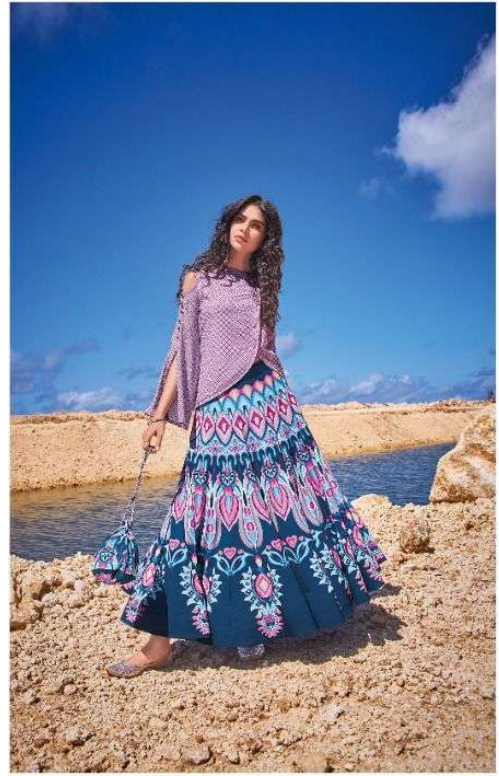


• 202 •





MUGDHA®





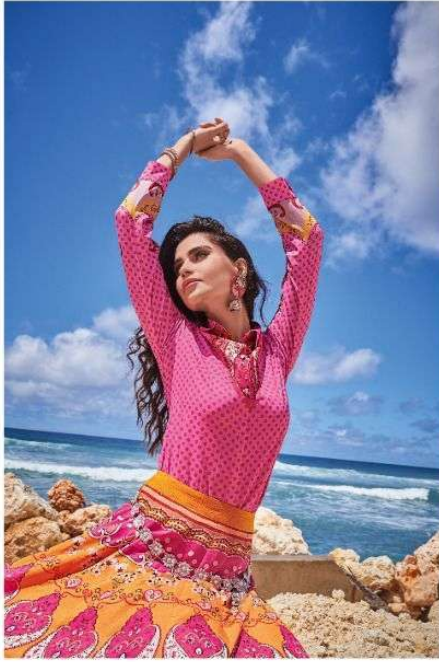
MUGDHA®





MUGDHA®

MUGDHA™

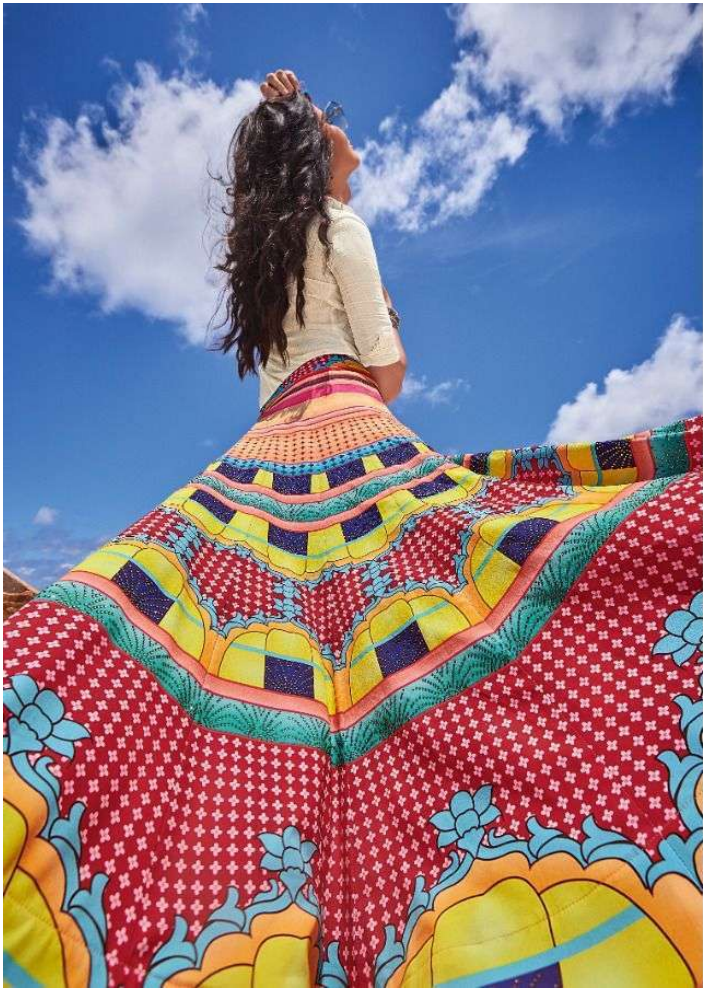


• 204 •



MUGDHA



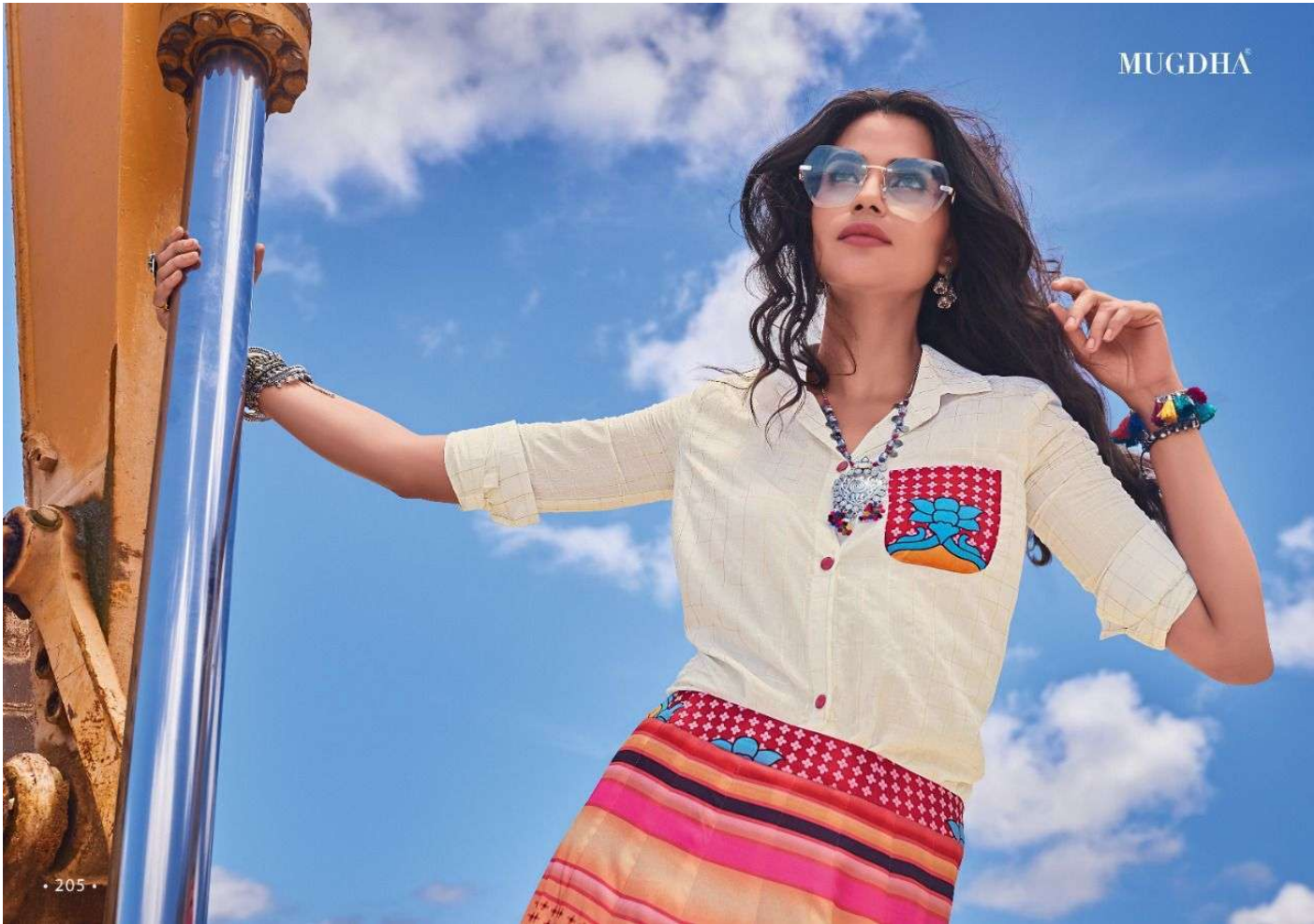


MUGDHA®





MUGDHA®



MUGDHA®





MUGDHA®

• 206 •

MUGDHA



206





• 201 •



• 202 •



• 205 •



• 203 •



• 204 •



• 206 •

MUGDHA®

Mishka



D.NO	FABRIC DETAILS	USP	RATE
201	TOP : TWO TONE GLASS FABRIC INNER : SANTOON SKIRT : SILKY CREPE	STYLISH SHIRT WITH JAIPURI GOTA ON POCKET DETAILING.DIGITAL PRINTED 18 KALI	1725/-
202	TOP : PURE VIOLA VISCOSE INNER : SANTOON SKIRT : MODAL SATIN	FRESH LEMON YELLOW SHIRT,WITH BEAUTIFUL SHARP MATCHING OF COLORS	1735/-
203	TOP : SPRING LYCRA INNER : SANTOON SKIRT : SILK CREPE	SHIRT WITH DIGITAL PRINT WITH PATTERN ON SHIRT IN SLEEVES.	1795/-
204	TOP : SPRING LYCRA INNER : SANTOON SKIRT : SILK CREPE	BEAUTIFUL PRINTED SHIRT WITH STREACHABLE FABRIC,WITH 18 KALI DIGITAL PRINTED SKIRT	1825/-
205	TOP : PURE SOFT CHANDERI WITH LUREX CHECKS INNER : SANTOON SKIRT : SILKY CREPE	OFF-WHITE SHIRT WITH DIGITAL POCKET.WITH BRIGHT&UNIQUE COLOR PLAY	1795/-
206	TOP : SLUB VIOLA SATIN INNER : SANTOON SKIRT : MODAL SATIN	SHADED PRINTED SKIRT,FERIVA SILK SLUB SATIN WITH BEADED COLLARN POCKET.	1895/-

AVERAGE PRICE :1795/- FULL SET PRICE :10770/- SIZE AVAILABLE:M,L,XL,XXL