

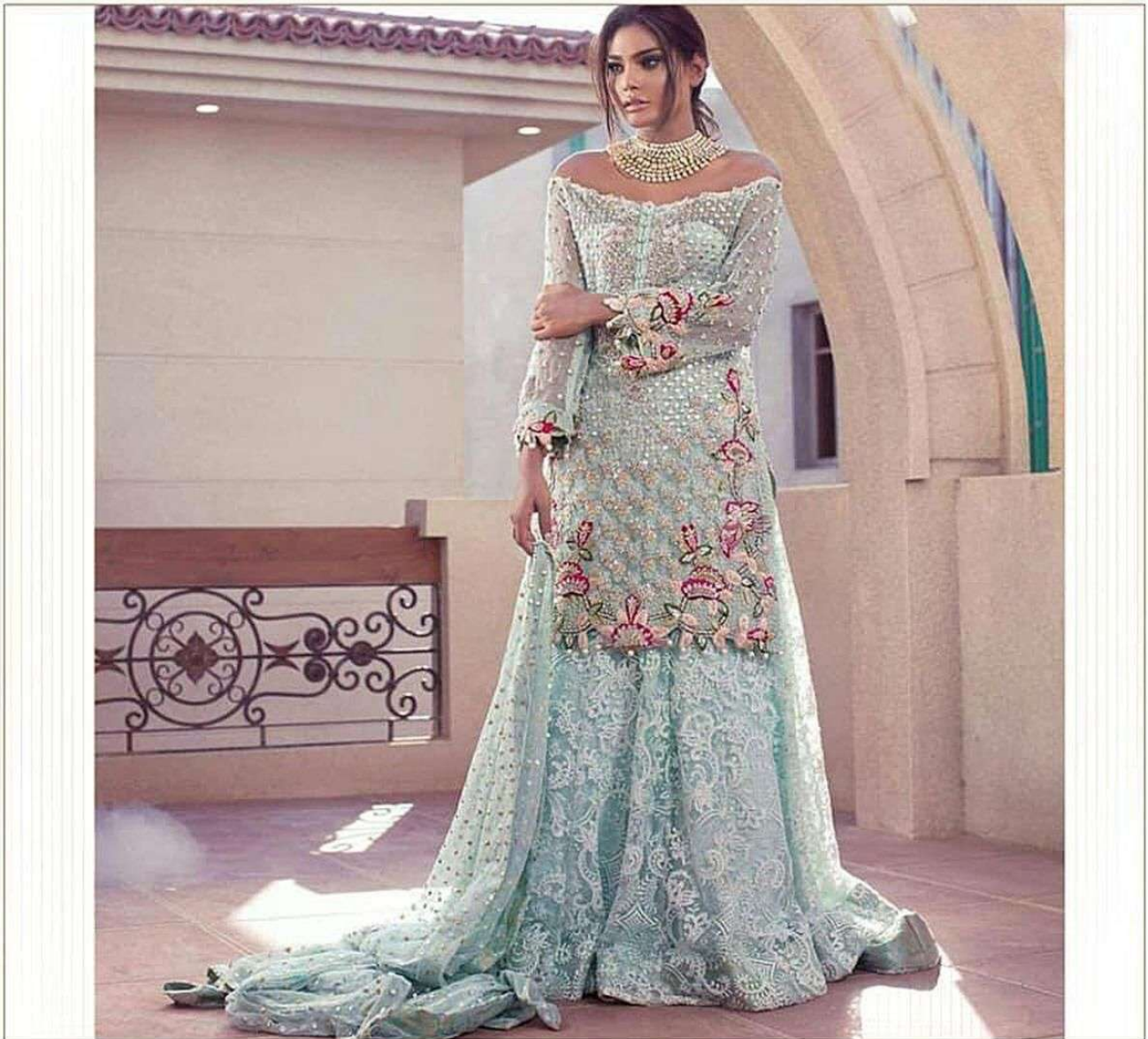
WASHING INSTRUCTIONS

DO NOT USE ANY TYPE OF BLEACH OR STAIN REMOVING CHEMICALS
BEFORE CUTTING / STITCHING. FABRIC SHOULD BE SOAKED BE SOAKED IN WATER
(ALL COMPONENTS SEPARATELY) FOR 15 MINUTES
DO NOT KEEP WET FABRIC IN TWISTED FROM IN ORDER TO AVOID COPY MKKS !
WASH COLOURED AND WHITE FABRICS SEPARATELY
IRON CLOTHES AT MODERATE TEMPERATURE ! DO NOT DRY FABRIC IN DIRECT SUNLIGHT
(EXTRA LACES , HANGING AND ACCESSORIES ARE NOT INDUDED)



D.NO.520





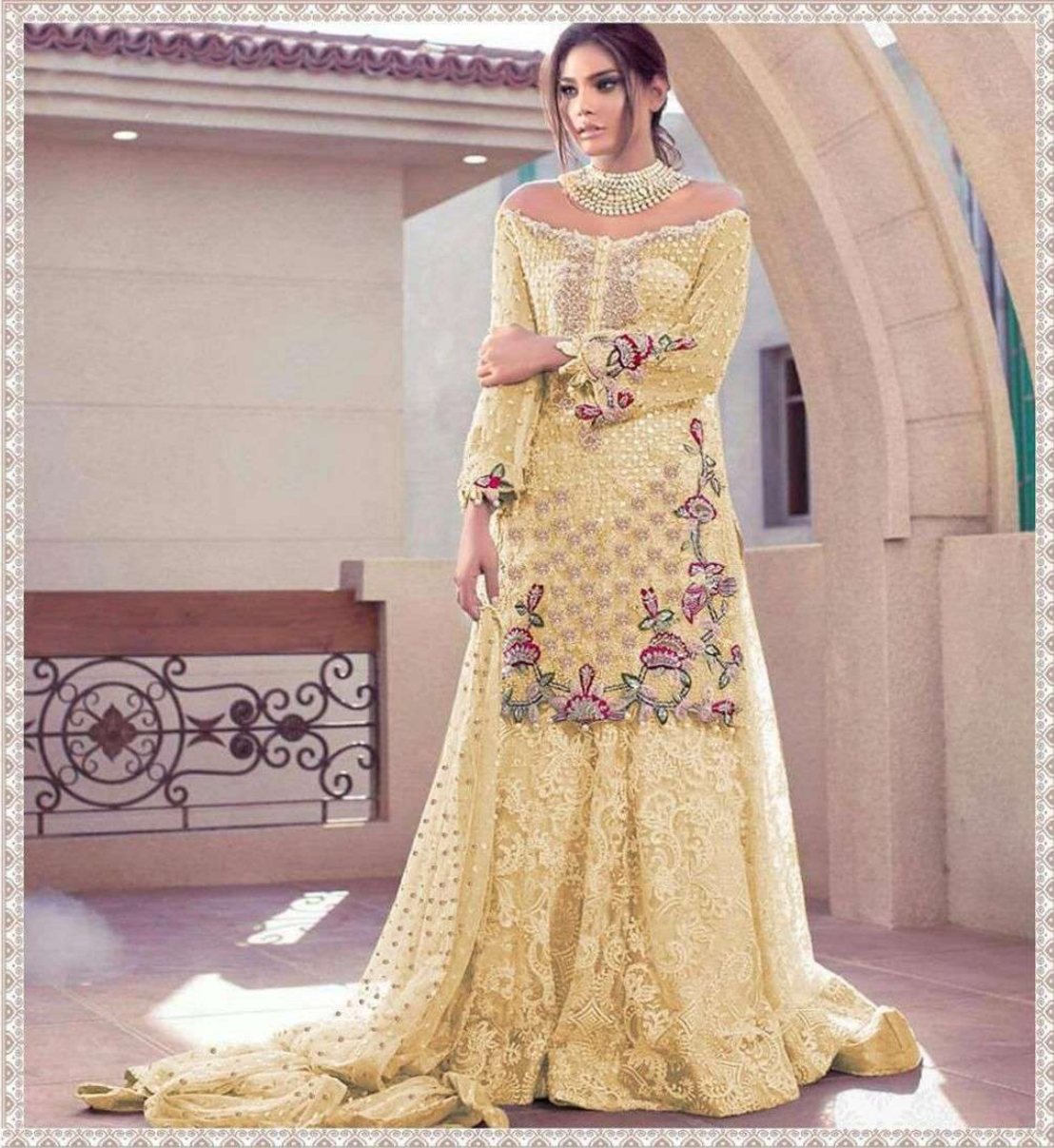
WASHING INSTRUCTIONS

DO NOT USE ANY TYPE OF BLEACH OR STAIN REMOVING CHEMICALS
BEFORE CUTTING / STITCHING. FABRIC SHOULD BE SOAKED BE SOAKED IN WATER
(ALL COMPONENTS SEPARATELY) FOR 15 MINUTES
DO NOT KEEP WET FABRIC IN TWISTED FROM IN ORDER TO AVOID COPY MKKS !
WASH COLOURED AND WHITE FABRICS SEPARATELY
IRON CLOTHES AT MODERATE TEMPERATURE ! DO NOT DRY FABRIC IN DIRECT SUNLIGHT
(EXTRA LACES , HANGING AND ACCESSORIES ARE NOT INDUDED)

RINAZ[®]
FASHION

D.NO.520





WASHING INSTRUCTIONS

DO NOT USE ANY TYPE OF BLEACH OR STAIN REMOVING CHEMICALS
BEFORE CUTTING / STITCHING. FABRIC SHOULD BE SOAKED IN WATER
(ALL COMPONENTS SEPARATELY) FOR 15 MINUTES
DO NOT KEEP WET FABRIC IN TWISTED FORM IN ORDER TO AVOID COPY MKRS !
WASH COLOURED AND WHITE FABRICS SEPARATELY
IRON CLOTHES AT MODERATE TEMPERATURE ! DO NOT DRY FABRIC IN DIRECT SUNLIGHT
(EXTRA LACES , HANGING AND ACCESSORIES ARE NOT INLUDED)

RINAZ[®]
FASHION

D.NO.520 B





Emb Sleeves

Emb Front

Net Diamond Dupatta



200 BUTTER FLY NET WITH HEAVY EMBROIDERY
BOTTOM. SIL. SARTON WITH NET EMBROIDERY
DUPATTA - NET WITH HANDWORK

Emb Net Bottom

Ramsha



Emb
Sleeves

Emb Front

Net Diamond
Dupatta



TOP: BUTTER FLY NET WITH HEAVY EMBROIDERY
BOTTOM: DUL SANTOORI WITH NET EMBROIDERY
DUPATTA: NET WITH HANDWORK

Emb Net
Bottom