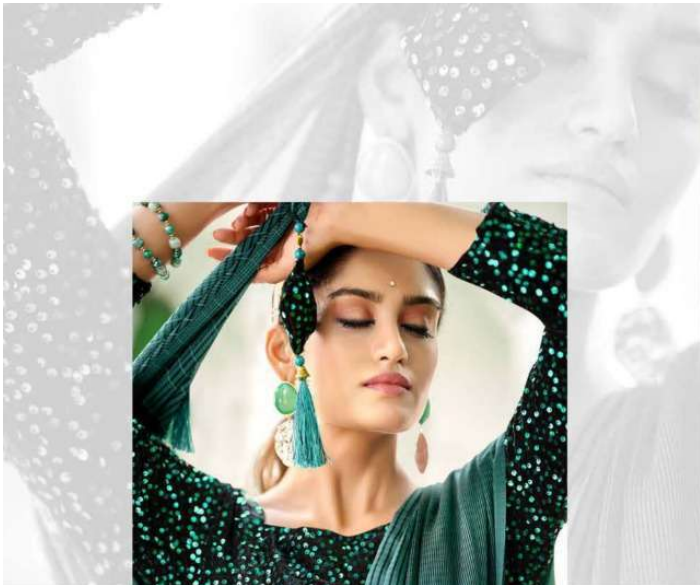




**SPARKLE**



**SPARKLE**



# Layering

A tunic, which is an example of artful threads, made of fiber turn out into linen fabric. Trendy elements designed with vibrant colors in front with high low concepts makes your personality more charming.



11501





Royal Essence

11503



# Elegance





# Picture Perfect



11506





layfring



11507





11501



11502



11505



11506



11503



11504



11507



11508