

Fepic[®]

Rosemeen[®]

Guzarish



Epic[®]



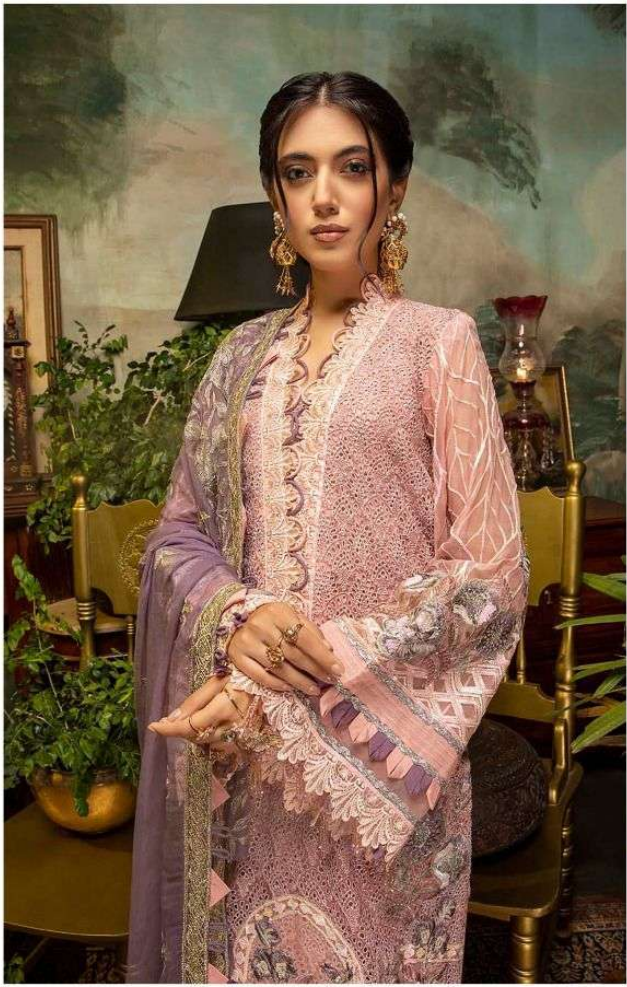
WASHING INSTRUCTIONS

DO NOT USE ANY TYPE OF BLEACH OR STAIN REMOVING CHEMICALS BEFORE CUTTING / STITCHING. FABRIC SHOULD BE SOAKED IN WATER (ALL COMPONENTS SEPARATELY) FOR 15 MINUTES
DO NOT KEEP WET FABRIC IN TWISTED FORM IN ORDER TO AVOID COPY MARKS |
WASH COLOURED AND WHITE FABRICS SEPARATELY
IRON CLOTHES AT MODERATE TEMPERATURE | DO NOT DRY FABRIC IN DIRECT SUNLIGHT (EXTRA LACES, HANGINGS AND ACCESSORIES ARE NOT INLUDED)

Rosemeen[®]
Guzarish
D.NO.91009



Fepic[®]



WASHING INTRUCTIONS

DO NOT USE ANY TYPE OF BLEACH OR STAIN REMOVING CHEMICALS
BEFORE CUTTING / STITCHING. FABRIC SHOULD BE SOAKED BE SOAKED IN WATER
(ALL COMPONENTS SEPARATELY) FOR 15 MINUTES
DO NOT KEEP WET FABRIC IN TWISTED FROM IN ORDER TO AVOID COPY MARKS |
WASH COLOURED AND WHITE FABRICS SEPARATELY
IRON CLOTHES AT MODERATE TEMPERATURE | DO NOT DRY FABRIC IN DIRECT SUNLIGHT
(EXTRA LACES, HANGINGS AND ACCESSORIES ARE NOT INDUDED)

Rosemeen[®]
Guzarish
D.NO.91011




Epic
Rosemeen®
Guzarish





Fepic
Rosemeen
Gazarish

 :_Fepic

 :Fb.com/Fepic11



Fepic[®]
Rosemeen[®]
Guzarish
D.NO.91011



Fepic[®]

Rosemeen[®]

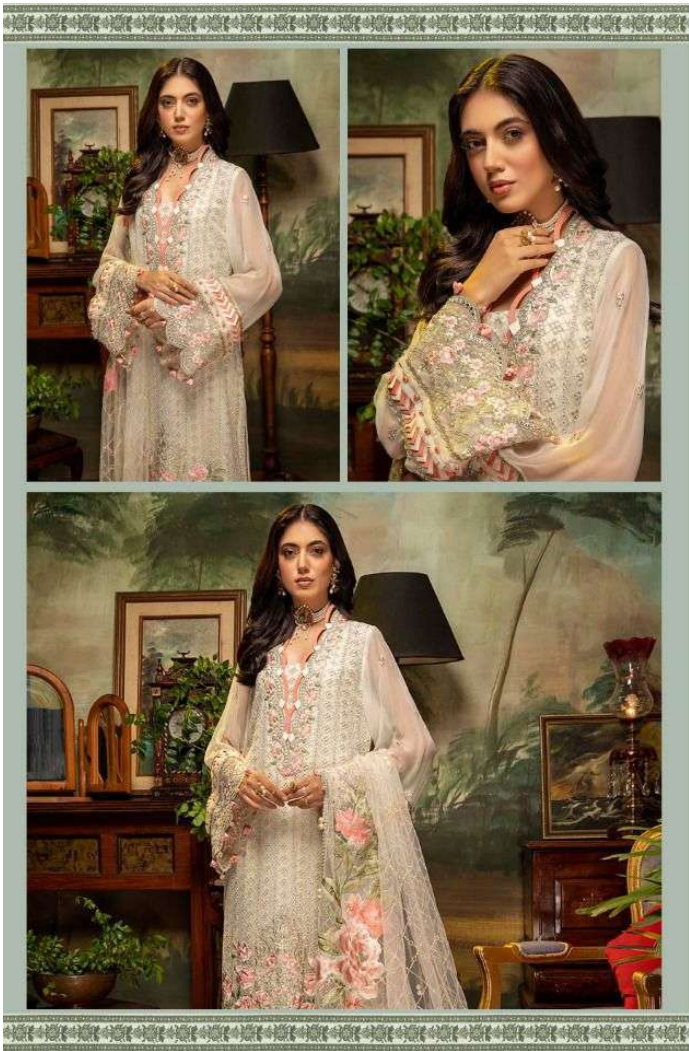
Guzarish





Epic
Rosemeen
Guzarish
D.NO.91010









D.NO.91008



D.NO.91009



D.NO.91010




D.NO.91011



Fepic

Rosemeen
Guzarish

 :_Fepic

 :Fb.com/Fepic11

Epic[®]



WASHING INSTRUCTIONS

DO NOT USE ANY TYPE OF BLEACH OR STAIN REMOVING CHEMICALS BEFORE CUTTING / STITCHING. FABRIC SHOULD BE SOAKED IN WATER (ALL COMPONENTS SEPARATELY) FOR 15 MINUTES
DO NOT KEEP WET FABRIC IN TWISTED FORM IN ORDER TO AVOID COPY MARKS |
WASH COLOURED AND WHITE FABRICS SEPARATELY
IRON CLOTHES AT MODERATE TEMPERATURE | DO NOT DRY FABRIC IN DIRECT SUNLIGHT
(EXTRA LACES, HANGINGS AND ACCESSORIES ARE NOT INLUDED)

Rosemeen[®]
Guzarish
D.NO.91008



Epic[®]



WASHING INSTRUCTIONS

DO NOT USE ANY TYPE OF BLEACH OR STAIN REMOVING CHEMICALS BEFORE CUTTING / STITCHING. FABRIC SHOULD BE SOAKED IN WATER (ALL COMPONENTS SEPARATELY) FOR 15 MINUTES
DO NOT KEEP WET FABRIC IN TWISTED FORM IN ORDER TO AVOID COPY MARKS |
WASH COLOURED AND WHITE FABRICS SEPARATELY
IRON CLOTHES AT MODERATE TEMPERATURE | DO NOT DRY FABRIC IN DIRECT SUNLIGHT (EXTRA LACES, HANGINGS AND ACCESSORIES ARE NOT INLUDED)

Rosemeen[®]
Guzarish
D.NO.91010

