


LAIBA
AM VOL-84





LAIBA
AM VOL-84



LAIBA[®]
AM VOL-84

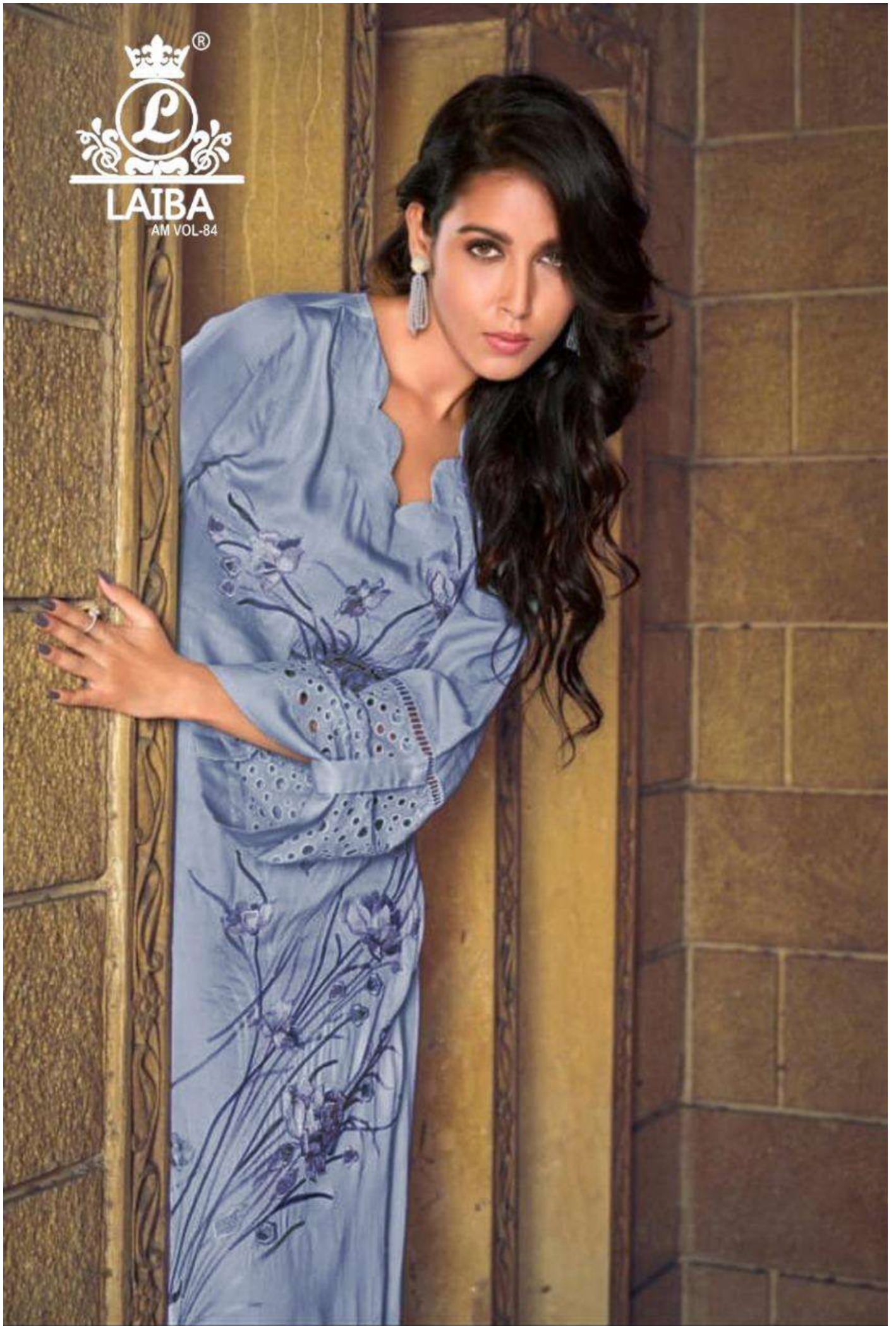

LAIBA
AM VOL-84




LAIBA
AM VOL-84




LAIBA
AM VOL-84




LAIBA
AM VOL-84





FABRICS DETAILS

TOP:-PURE GLACE COTTON

BOTTOM:-PURE COTTON SARTIN STREACHABLE

SIZE:-XL



CARE INSTRUCTIONS

DRY CLEAN RECOMMENDED
DO NOT USE ANY TYPE OF BLEACH OR STAIN REMOVING CHEMICALS
WASH & SOAK COLORED & WHITE FABRICS SEPARATELY
DO NOT OVER EXPOSE DAMP FABRIC TO STRONG SUNLIGHT
IRON AT MODERATE TEMPERATURE


LAIBA
AM VOL-84





LAIBA

FABRIC DETAIL
TOP: PURE SILK COTTON
BOTTOM: PURE COTTON (ARTIN STRETCHABLE)
SILK

CARE INSTRUCTIONS
Wash in cold water with similar colors. Do not use bleach. Iron on low heat. Do not dry clean. Do not use fabric softener. Do not use dryer. Do not use steam iron. Do not use dry cleaning.

LAIBA





LAIBA

FABRIC DETAILS
 TOP: 100% POLYESTER
 BOTTOM: PURE COTTON
 50% K

CARE INSTRUCTIONS
 Dry clean only

LAIBA