



MARIA.B.
EVENING WEAR

SPRING / SUMMER'20

FOX GEORGET WITH HEAVY EMBROIDERY
WITH PATCH TOP
NAJMEEN WITH HEAVY EMBROIDERY WORK
FOUR SIDE LACE
DUPATTA
SANTOON BOTTOM & INEER
WITH BOTTOM WORK PATCH



HOOR TEX



CARE INSTRUCTIONS

DRY CLEAN RECOMMENDED. IRON THE CLOTHES AT MODERATE TEMPRATUR
DO NOT USE ANY TYPE OF BLEACH OR STAIN REMOVING CHEMICALS



MARIA.B.
EVENING WEAR

SPRING / SUMMER'20

FOX GEORGET WITH HEAVY EMBROIDERY
WITH PATCH TOP
NAJMEEN WITH HEAVY EMBROIDERY WORK
FOUR SIDE LACE
DUPATTA
SANTOON BOTTOM & INEER
WITH BOTTOM WORK PATCH



HOOR TEX



CARE INSTRUCTIONS

DRY CLEAN RECOMMENDED. IRON THE CLOTHES AT MODERATE TEMPRATUR
DO NOT USE ANY TYPE OF BLEACH OR STAIN REMOVING CHEMICALS



MARIA.B.

— EVENING WEAR —

SPRING / SUMMER '20

FOX GEORGET WITH HEAVY EMBROIDERY
WITH PATCH TOP
NAJMEEN WITH HEAVY EMBROIDERY WORK
FOUR SIDE LACE
DUPATTA
SANTOON BOTTOM & INEER
WITH BOTTOM WORK PATCH



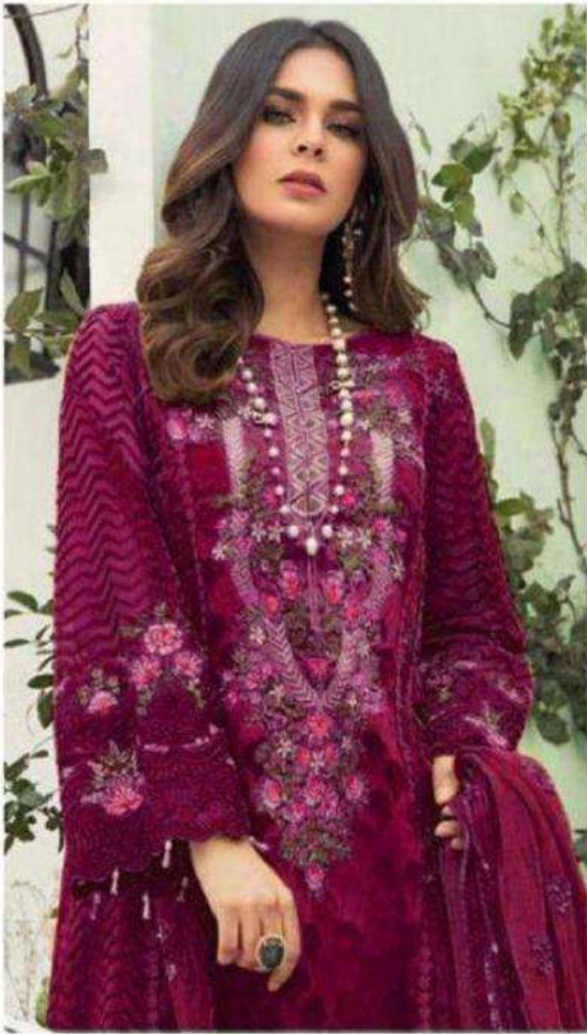
HOOR TEX



1001-p

CARE INSTRUCTIONS

DRY CLEAN RECOMMENDED. IRON THE CLOTHES AT MODERATE TEMPRATURE
DO NOT USE ANY TYPE OF BLEACH OR STAIN REMOVING CHEMICALS



MARIA.B.
EVENING WEAR

SPRING / SUMMER'20

FOX GEORGET WITH HEAVY EMBROIDERY
WITH PATCH TOP
NAJMEEN WITH HEAVY EMBROIDERY WORK
FOUR SIDE LACE
DUPATTA
SANTOON BOTTOM & INEER
WITH BOTTOM WORK PATCH



HOOR TEX



CARE INSTRUCTIONS

DRY CLEAN RECOMMENDED. IRON THE CLOTHES AT MODERATE TEMPRATURE.
DO NOT USE ANY TYPE OF BLEACH OR STAIN REMOVING CHEMICALS



