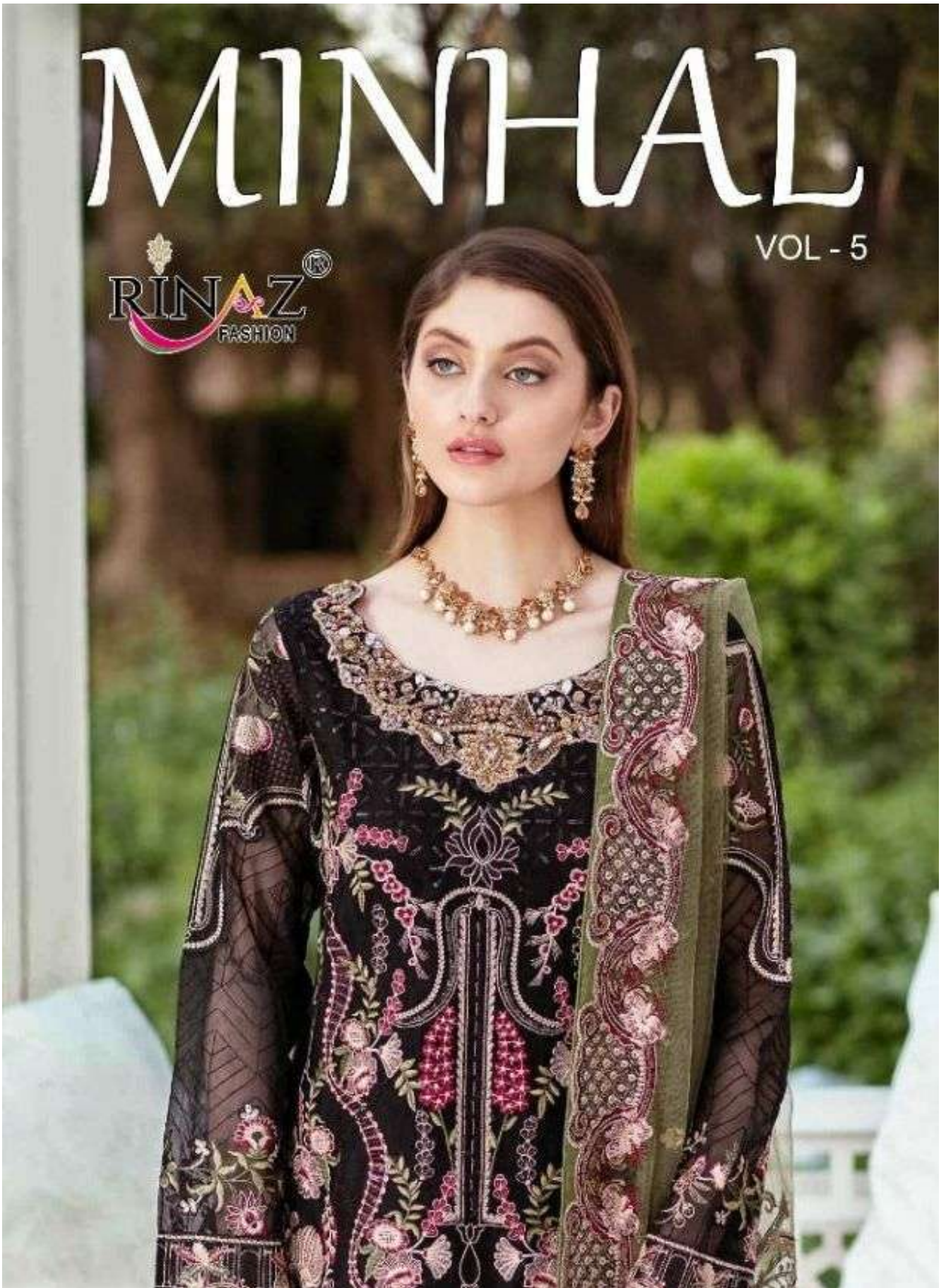


MINHAL

VOL - 5

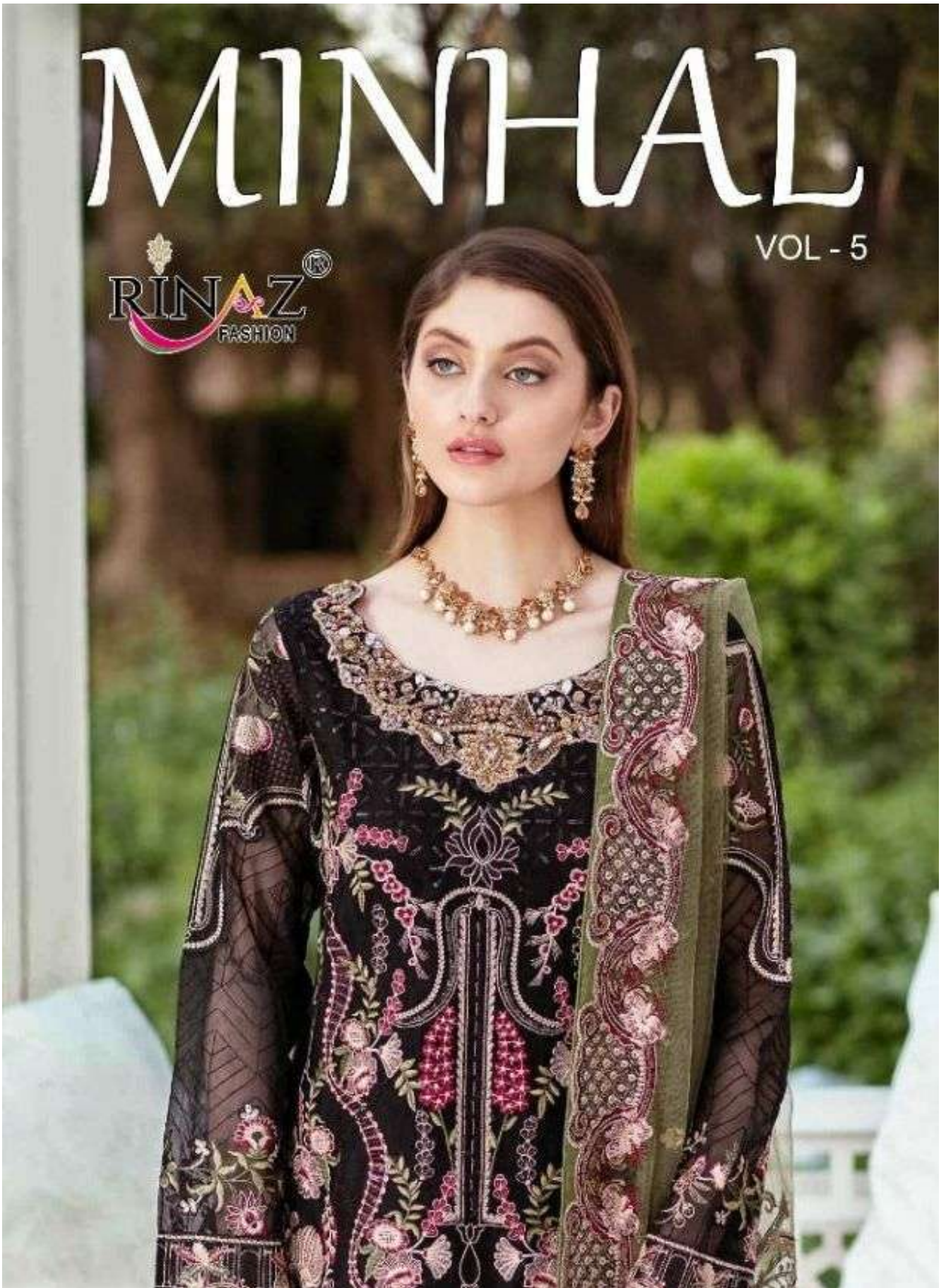
 RINAZ[®]
FASHION



MINHAL

VOL - 5

 RINAZ[®]
FASHION





RINAZ
FASHION

WASHING INSTRUCTIONS

DO NOT USE ANY TYPE OF BLEACH OR STAIN REMOVING CHEMICALS BEFORE CUTTING / STITCHING. FABRIC SHOULD BE SOAKED IN WATER (ALL COMPONENTS SEPARATELY) FOR 15 MINUTES
DO NOT KEEP WET FABRIC IN TWISTED FORM IN ORDER TO AVOID COPY MARKS!
WASH COLOURED AND WHITE FABRICS SEPARATELY
IRON CLOTHES AT MODERATE TEMPERATURE! DO NOT DRY FABRIC IN DIRECT SUNLIGHT
(EXTRA LACES, HANGING AND ACCESSORIES ARE NOT INCLUDED)

TOP - FOX GEORGETTE WITH HEAVY EMBROIDERY & DIAMOND WORK
BOTTOM+INNER - HEAVY SHANTUN WITH EMBROIDERY
DUPATTA - NAZMIN WITH HEAVY EMBROIDERY

MINHAL
VOL - 5
D.NO.8902





RINAZ[®]
FASHION

WASHING INSTRUCTIONS
 DO NOT USE ANY TYPE OF BLEACH OR STAIN REMOVING CHEMICALS
 BEFORE CUTTING / STITCHING. FABRIC SHOULD BE SOAKED IN WATER
 (ALL COMPONENTS SEPARATELY) FOR 15 MINUTES
 DO NOT KEEP WET FABRIC IN TWISTED FORM IN ORDER TO AVOID COPY MKRS !
 WASH COLOURED AND WHITE FABRICS SEPARATELY
 IRON CLOTHES AT MODERATE TEMPERATURE ! DO NOT DRY FABRIC IN DIRECT SUNLIGHT
 (EXTRA LACES , HANGING AND ACCESSORIES ARE NOT INLUDED)

TOP - FOX GEORGETTE WITH HEAVY
 EMBROIDERY & DIAMOND WORK
 BOTTOM+INNER - HEAVY SHANTUN
 WITH EMBROIDERY
 DUPATTA - NAZIN WITH
 HEAVY EMBROIDERY

MINHAL
 VOL - 5
 D.NO.8901





RINAZ[®]
FASHION

WASHING INSTRUCTIONS

DO NOT USE ANY TYPE OF BLEACH OR STAIN REMOVING CHEMICALS
BEFORE CUTTING / STITCHING. FABRIC SHOULD BE SOAKED IN WATER
(ALL COMPONENTS SEPARATELY) FOR 15 MINUTES
DO NOT KEEP WET FABRIC IN TWISTED FORM IN ORDER TO AVOID COPY MKRS !
WASH COLOURED AND WHITE FABRICS SEPARATELY
IRON CLOTHES AT MODERATE TEMPERATURE ! DO NOT DRY FABRIC IN DIRECT SUNLIGHT
(EXTRA LACES , HANGING AND ACCESSORIES ARE NOT INLUDED)

TOP - FOX GEORGETTE WITH HEAVY
EMBROIDERY & DIAMOND WORK
BOTTOM+INNER - HEAVY SHANTUN
WITH EMBROIDERY
DUPATTA - NAZNNIN WITH
HEAVY EMBROIDERY

MINHAL
VOL - 5
D.NO.8905





RINAZ
FASHION

WASHING INSTRUCTIONS

DO NOT USE ANY TYPE OF BLEACH OR STAIN REMOVING CHEMICALS
BEFORE CUTTING / STITCHING. FABRIC SHOULD BE SOAKED IN WATER
(ALL COMPONENTS SEPARATELY) FOR 15 MINUTES
DO NOT KEEP WET FABRIC IN TWISTED FORM IN ORDER TO AVOID COPY MKKS !
WASH COLOURED AND WHITE FABRICS SEPARATELY
IRON CLOTHES AT MODERATE TEMPERATURE ! DO NOT DRY FABRIC IN DIRECT SUNLIGHT
(EXTRA LACES , HANGING AND ACCESSORIES ARE NOT INLUDED)

TOP - FOX GEORGETTE WITH HEAVY
EMBROIDERY & DIAMOND WORK
BOTTOM+INNER - HEAVY SHANTUN
WITH EMBROIDERY
DUPATTA - NAZMIN WITH
HEAVY EMBROIDERY

MINHAL
VOL - 5
D.NO.8903



MINHAL

VOL - 5

RINAZ[®]
FASHION



D.NO.8901

D.NO.8902

D.NO.8903



D.NO.8904

D.NO.8905

RINAZ[®]
FASHIONI



WASHING INSTRUCTIONS

DO NOT USE ANY TYPE OF BLEACH OR STAIN REMOVING CHEMICALS
BEFORE CUTTING / STITCHING. FABRIC SHOULD BE SOAKED IN WATER
(ALL COMPONENTS SEPARATELY) FOR 15 MINUTES
DO NOT KEEP WET FABRIC IN TWISTED FORM IN ORDER TO AVOID COPY MARKS !
WASH COLOURED AND WHITE FABRICS SEPARATELY
IRON CLOTHES AT MODERATE TEMPERATURE ! DO NOT DRY FABRIC IN DIRECT SUNLIGHT
(EXTRA LACES , HANGING AND ACCESSORIES ARE NOT INLUDED)

TOP - FOX GEORGETTE WITH HEAVY
EMBROIDERY & DIAMOND WORK
BOTTOM+INNER - HEAVY SHANTUN
WITH EMBROIDERY
DUPATTA - NAZIN WITH
HEAVY EMBROIDERY

MINHAL
VOL - 5
D.NO.8904





MINHAL VOL - 5

D.No.	TOP	BOTTOM	DUPATTA
8901	FOR GEORGETTE WITH HEAVY EMBROIDERY & DIAMOND WORK	HEAVY SHANTUN WITH EMBROIDERY	NAZNIN WITH HEAVY EMBROIDERY
8902	FOR GEORGETTE WITH HEAVY EMBROIDERY & DIAMOND WORK	HEAVY SHANTUN WITH EMBROIDERY	NAZNIN WITH HEAVY EMBROIDERY
8903	FOR GEORGETTE WITH HEAVY EMBROIDERY & DIAMOND WORK	HEAVY SHANTUN WITH EMBROIDERY	NAZNIN WITH HEAVY EMBROIDERY
8904	FOX GEORGETTE WITH HEAVY EMBROIDERY & DIAMOND WORK	HEAVY SHANTUN WITH EMBROIDERY	NAZNIN WITH HEAVY EMBROIDERY
8905	FOX GEORGETTE WITH HEAVY EMBROIDERY & DIAMOND WORK	HEAVY SHANTUN WITH EMBROIDERY	NAZNIN WITH HEAVY EMBROIDERY

*NOTE : Rate 1299 + GST Extra.