



RINAZ[®]
FASHION



D.NO.6003





WASHING INSTRUCTIONS

DO NOT USE ANY TYPE OF BLEACH OR STAIN REMOVING CHEMICALS
 BEFORE CUTTING / STITCHING, FABRIC SHOULD BE SOAKED IN WATER
 (ALL COMPONENTS SEPARATELY) FOR 15 MINUTES
 DO NOT KEEP WET FABRIC IN TWISTED FORM IN ORDER TO AVOID COPY MARKS!
 WASH COLOURED AND WHITE FABRICS SEPARATELY
 IRON CLOTHES AT MODERATE TEMPERATURE! DO NOT DRY FABRIC IN DIRECT SUNLIGHT
 (EXTRA LACES, HANGING AND ACCESSORIES ARE NOT INCLUDED)

**TOP - CAMBRIC COTTON WITH HEAVY
 EMBROIDERY**
BOTTOM - PURE COTTON
**DUPATTA - NET WITH HEAVY
 EMBROIDERY**

ANAYA
 VOL-3

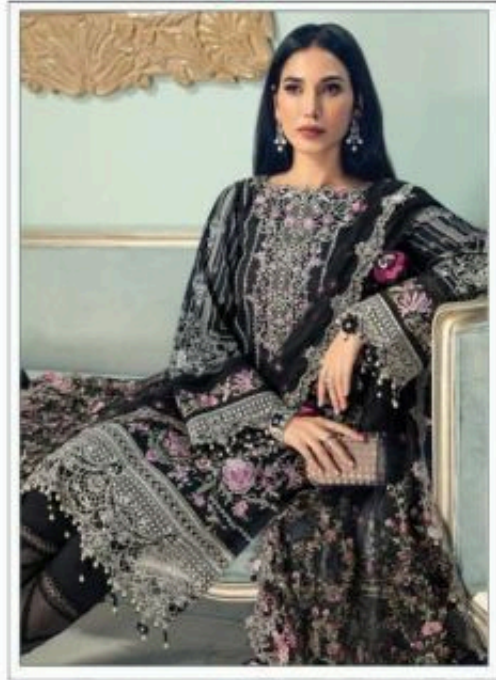
D.NO.6004







RINAZ[®]
FASHION



D.NO.603



